

TOWER
SQUARE

A WHOLE NEW TAKE ON
Springfield

Retail

TOWER SQUARE

CLASS A RETAIL | DOWNTOWN SPRINGFIELD

Street retail and signage opportunities

Tenant engagement events

Conveniently located near Union Station



AMENITIES

- Ample, secured parking
- 24/7 security
- On-site management office
- Easy access to I-91
- 10,000 sq. ft. fitness center
- Food court
- Childcare facility
- On-site post office

EXISTING RETAIL

Dunkin' Donuts

Westfield Bank

Hot Table

CVS Pharmacy

Community Bank

SkinCatering Spa



FOR MORE INFORMATION

contact Demetrios Panteleakis or Walter Kroll

413-736-8338

 macmillang.com



REVITALIZED Springfield

MGM Casino open for business

MassMutual pledges \$50m expansion, 1,500 jobs

CRRC – largest rail car manufacturing company in the world

Union Station – regional transportation center with daily trains to Hartford & Boston

Mayor’s office allots \$35m for roadway improvements

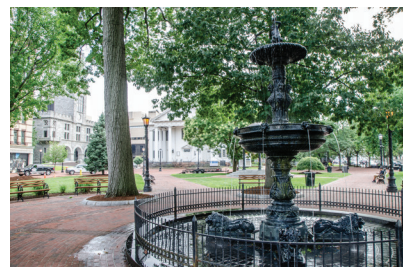
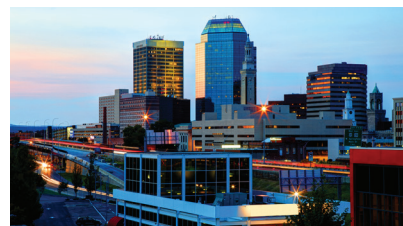


1500 MAIN STREET SPRINGFIELD, MA

Tower Square, a 28-floor complex located in the heart of downtown Springfield, offers exceptional opportunities for office space and/or retail business.

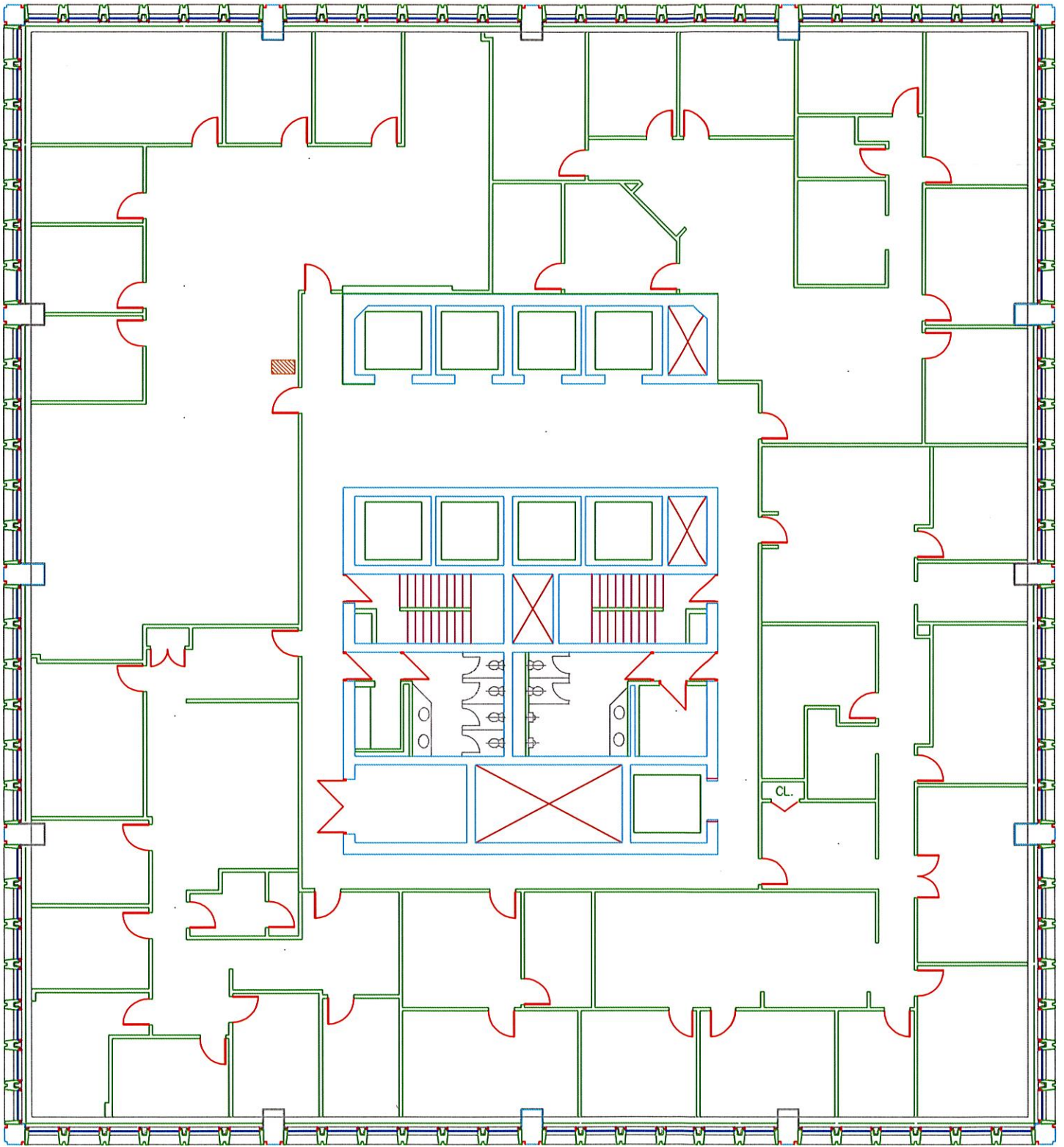
Now is an ideal time to capitalize on Springfield’s exciting revitalization: As the MGM casino takes its place as a landmark destination, downtown Springfield reaps the benefits of its world class marketing initiatives. Just streets away, the renowned Springfield museums continue to draw wide and varied audiences, and the Basketball Hall of Fame thrives as an international draw.

Be a part of ushering in the new downtown Springfield by choosing Tower Square as the vital location for your business.



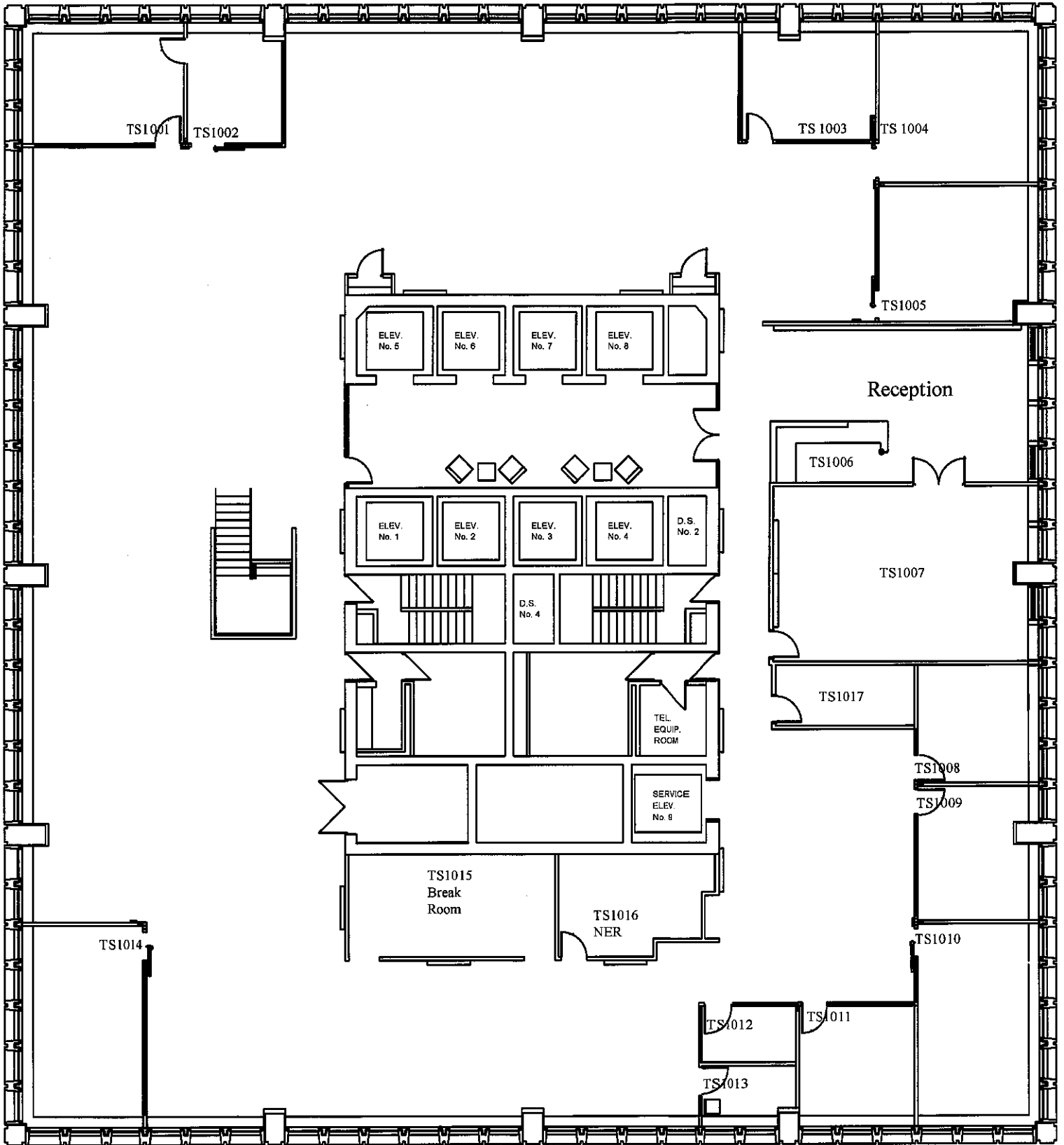
FOR MORE INFORMATION
contact Demetrios Panteleakis or Mark Healy
413-736-8338

 **macmillang.com**



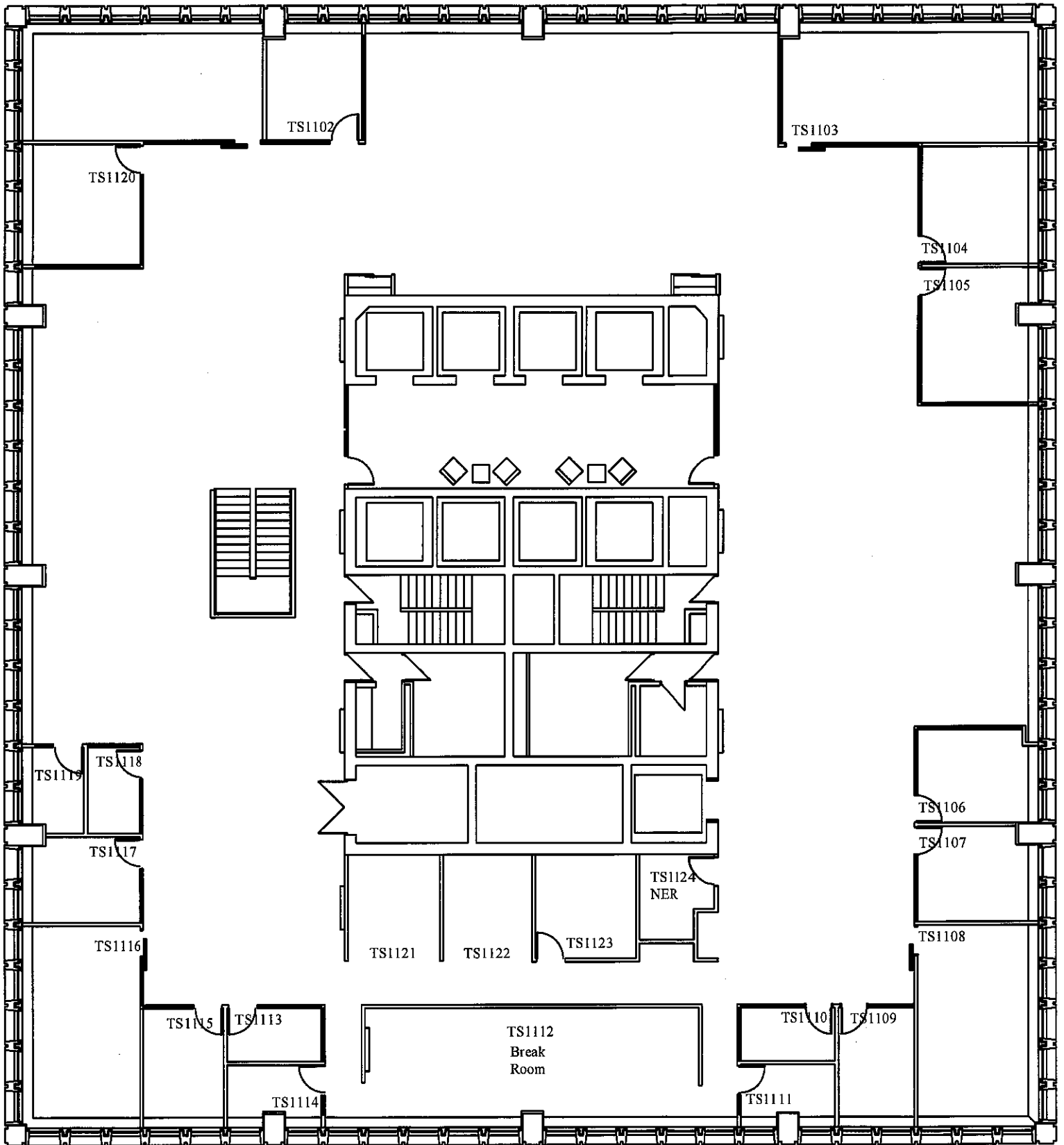
9th Floor

Main Street

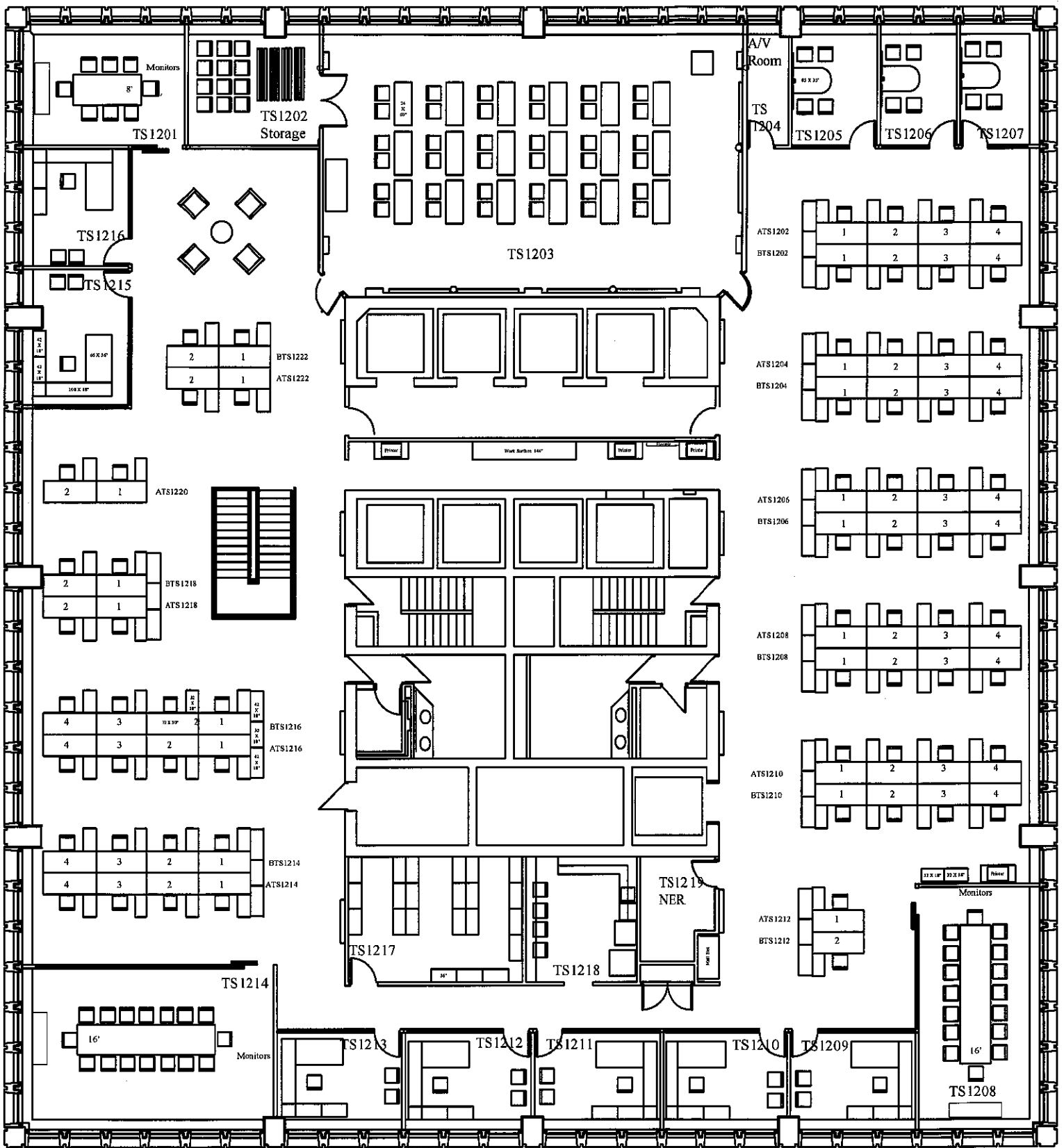


East Columbus Avenue

Tower Square
10th Floor
Plan



Tower Square
11th Floor
2-18-16
62 Seats

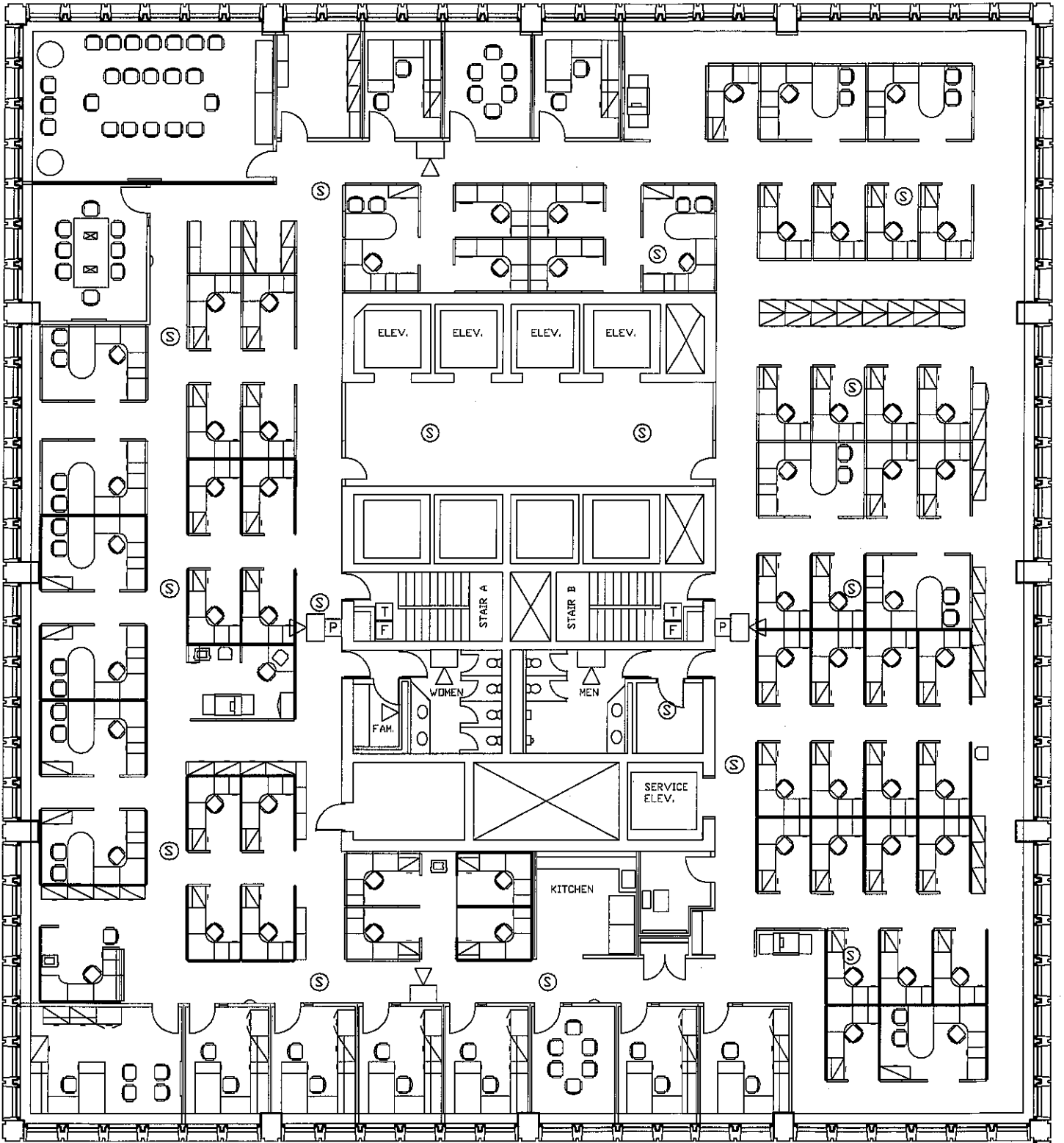


Tower Square
12th Floor
2-18-16
68 Seats

EAST

NUK IH

SOUTH



WEST

TOWER SQUARE
FLOOR: 14
Rev. 9/25/08

