

FOR SUBLEASE

LIBERTY STATION

POINT LOMA | SAN DIEGO

2751 ROOSEVELT ROAD
SAN DIEGO, CA 92106



±134 SF
AVAILABLE



±134 SF OFFICE SUITE | FLEXIBLE LEASE TERM | UPGRADED INTERIORS
NATURAL LIGHTING | ABUNDANT PARKING | AMENITY RICH LOCATION

SUBLEASE



LIBERTY STATION

361-ACRE HISTORIC ALL-IN-ONE HUB
FEATURING SHOPPING, DINING, ART,
ENTERTAINMENT AND HISTORY



2751 ROOSEVELT ROAD

- ±134 SF office suite
- Short term leases available
- Recently upgraded interior
- 2nd floor space – elevator access
- Excellent views & natural lighting
- Strategic positioning in Liberty Station
- Amenity-rich geography
- Abundant parking

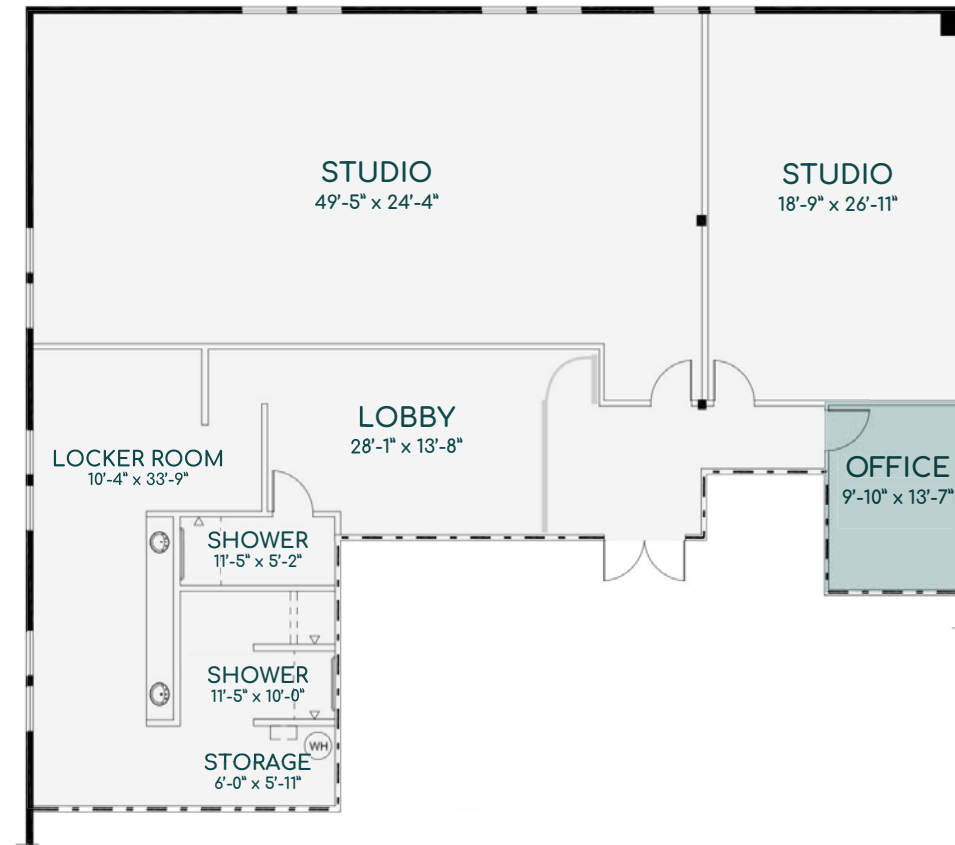
Lease Rate: \$990 / month + CAMs

POINT LOMA | SAN DIEGO



THE INTERIOR

LIBERTY STATION



LIBERTY STATION

2751 ROOSEVELT ROAD
SAN DIEGO, CA 92106



LIBERTY STATION

SAN DIEGO, CALIFORNIA

Liberty Station served as the Naval Training Center (NTC) from 1923 to 1997, where 1.75 million Navy recruits and 1 million A and C school sailors were trained during its 70 years of operation.

Today, Liberty Station has been transformed into a 361-acre, historic all-in-one hub featuring shopping, dining, art, entertainment, and history and is a center for commerce, education, and the arts.



LIBERTY STATION WEBSITE

• CLICK TO VIEW •



LIBERTY STATION TENANT/DISTRICT MAP

• CLICK TO VIEW •

- ARTS DISTRICT
- THE QUARTER
- THE NEIGHBORHOOD
- SOUTH POINT



2751 ROOSEVELT ROAD

FOR SUBLEASE

LIBERTY STATION

POINT LOMA | SAN DIEGO

2751 ROOSEVELT ROAD
SAN DIEGO, CA 92106

For more information or tour, please contact:

PAUL BRITVAR

First Vice President

t 858.230.1166

pbritvar@lee-associates.com

CA RE Lic. #01949354



All information furnished regarding property for sale, rental or financing is from sources deemed reliable, but no warranty or representation is made to the accuracy thereof and same is submitted subject to error, omissions, change of price, rental or other conditions prior to sale, lease or financing or withdrawal without notice. No liability of any kind is to be imposed on the broker herein.