

2727 GRAND AVE WAUKEGAN, IL



REDUCED LEASE RATE

9,142 SF AVAILABLE FOR LEASE

PROPERTY HIGHLIGHTS

- 9,142 SF of space for lease next to a well performing Lewis Fresh Market grocery store
- 65' of frontage along Grand Avenue
- Space sits close to the street which provides fantastic exposure
- One of the best looking retail centers on Grand Avenue in this market
- Open layout makes for an easy retrofit for almost any retail type of use

For more information, please contact:

JIM SCHUTTER
312.224.3210
jschutter@ngkf.com

LARRY KLING
312.224.3199
Larry.kling@ngkf.com



DEMOGRAPHICS

| | 1 MILE | 3 MILE | 5 MILE |
|------------------------|----------|----------|----------|
| Residential Population | 20,767 | 108,422 | 169,499 |
| Daytime Population | 17,633 | 97,108 | 177,141 |
| Average Annual Income | \$60,469 | \$62,993 | \$76,676 |



TRAFFIC COUNTS

| | |
|-----------|------------|
| Grand Ave | 20,400 VPD |
|-----------|------------|

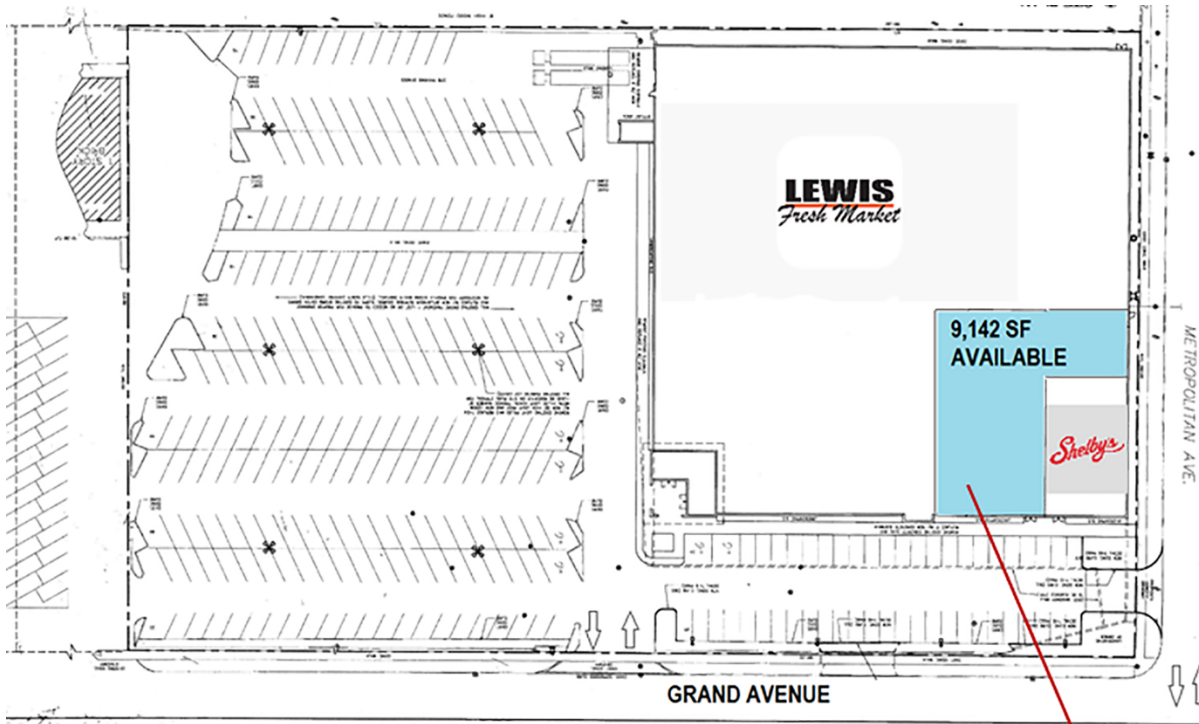


ngkf.com

500 West Monroe Street | Suite 2900 | Chicago, IL 60661

The information contained herein has been obtained from sources deemed reliable but has not been verified and no guarantee, warranty or representation, either express or implied, is made with respect to such information. Terms of sale or lease and availability are subject to change or withdrawal without notice.

2727 GRAND AVE WAUKEGAN, IL



JIM SCHUTTER
312.224.3210
jschutter@ngkf.com

LARRY KLING
312.224.3199
Larry.kling@ngkf.com

2727 GRAND AVE WAUKEGAN, IL

