

EXECUTIVE SUMMARY



LEASE OVERVIEW

Price	\$2,500.00
Parcel ID	00017821; 00015729
City	West End
Square Feet	2,400 +/- SF
Zoning	VB
Book/Page	4607/442
Utilities	Public water; septic

Great office space directly next to the Prescription Shoppe in Seven Lakes. Space features: lobby, reception area, multiple offices and restroom. Good visibility and signage with plenty of parking for staff and clients. Tenant is using the property 2 days a week. Please make appointment to view the property.

for more information

George Manley

Principal / NC Broker

O: 910.684.5353

C: 910.603.8395

George@bellmanley.com

Janet Kent

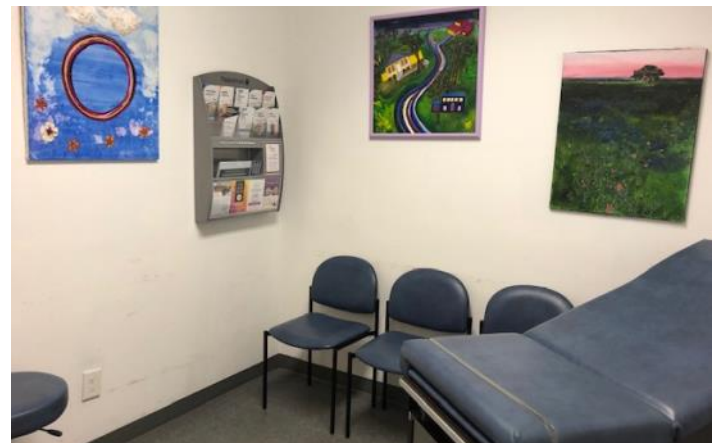
NC Broker

O: 910.684.5353

C: 910.206.1420

Janet@bellmanley.com

PHOTOS



for more information

George Manley

Principal / NC Broker

O: 910.684.5353

C: 910.603.8395

George@bellmanley.com

Janet Kent

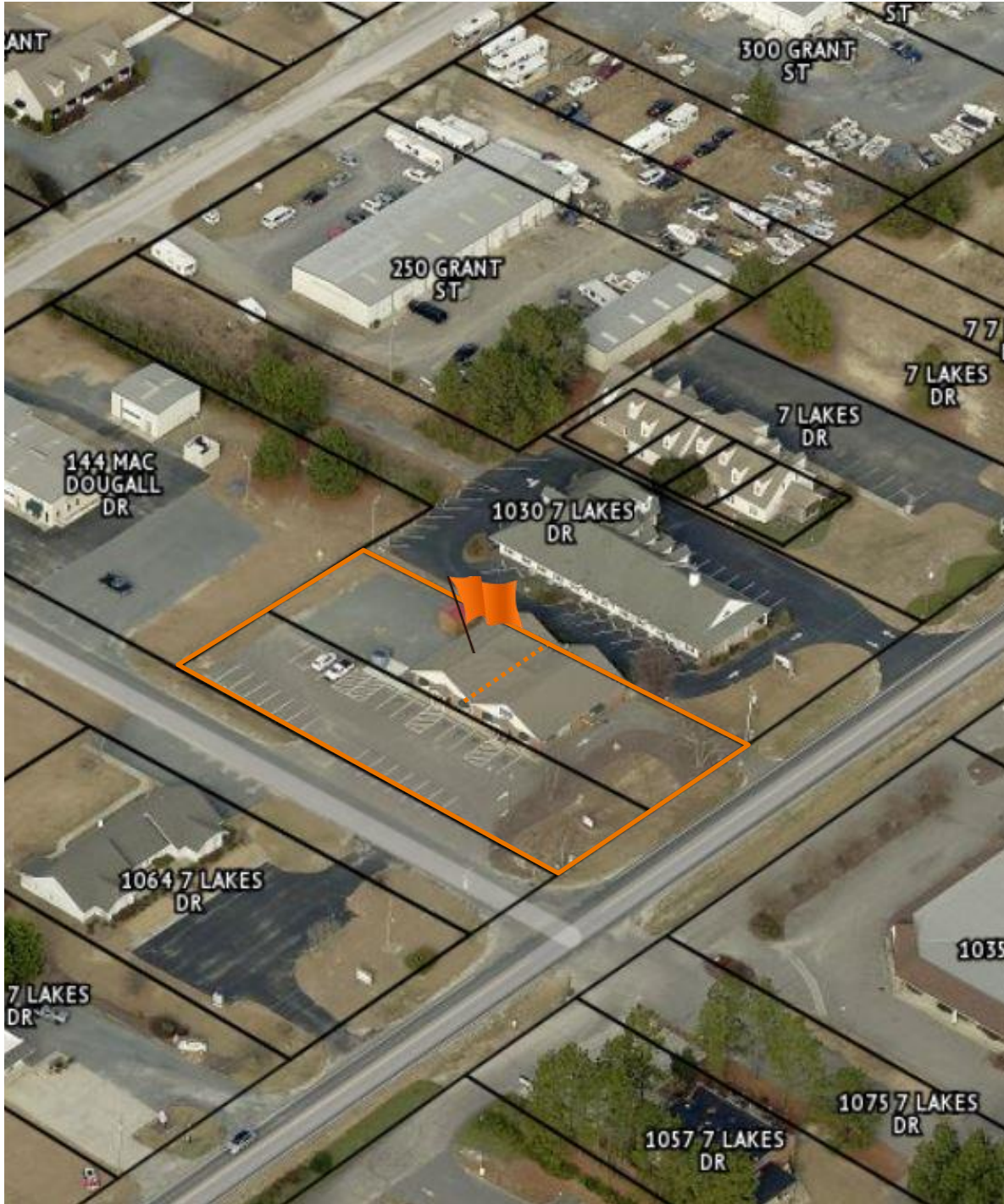
NC Broker

O: 910.684.5353

C: 910.206.1420

Janet@bellmanley.com

AERIAL MAP



for more information

George Manley

Principal / NC Broker

O: 910.684.5353

C: 910.603.8395

George@bellmanley.com

Janet Kent

NC Broker

O: 910.684.5353

C: 910.206.1420

Janet@bellmanley.com