

For Sublease

1,398 SF

2nd Floor Space Available

607

Washington Road

Mt. Lebanon, PA 15228



Building Highlights

- 2nd Floor - Sublease through 9/20/2028
- All Glass Offices
- Next to Springhill Suites by Marriott Hotel
- In the Heart of Downtown Mt. Lebanon
- Surrounded by Retail and Restaurants
- Light Rail Station Located Behind Property
- Dedicated Property Management Services
- Dedicated Client Experience Team
- Exclusive Access to Partner Perks Program



JOHN ELIOPOULOS
+1 412 613 6229
jeliopoulos@naiburnsscalo.com

KELLEY HECKATHORNE, SIOR
+1 412 670 4248
khoover@naiburnsscalo.com

NAI Burns Scalo

Brokerage Services

412.250.3000 | naiburnsscalo.com

For Sublease

1,398 SF

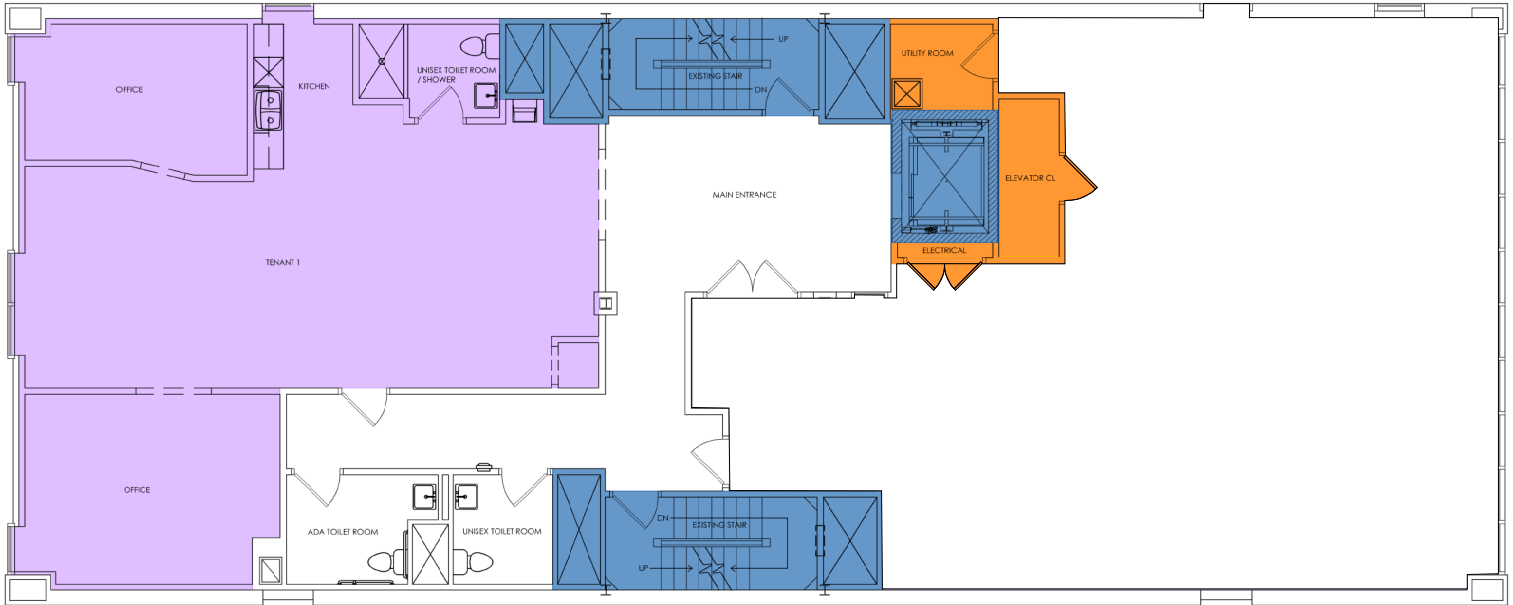
2nd Floor Space Available

607

Washington Road

Mt. Lebanon, PA 15228

2nd Floor: 1,398 SF



Amenities

- Sublease through 9/20/2028
- Beautiful Well-Appointed Finishes
 - Hardwood Floors
 - Glass Doors
- Private Restroom & Shower
- Fantastic Kitchen Area

For Sublease

1,398 SF

2nd Floor Space Available

607

Washington Road

Mt. Lebanon, PA 15228

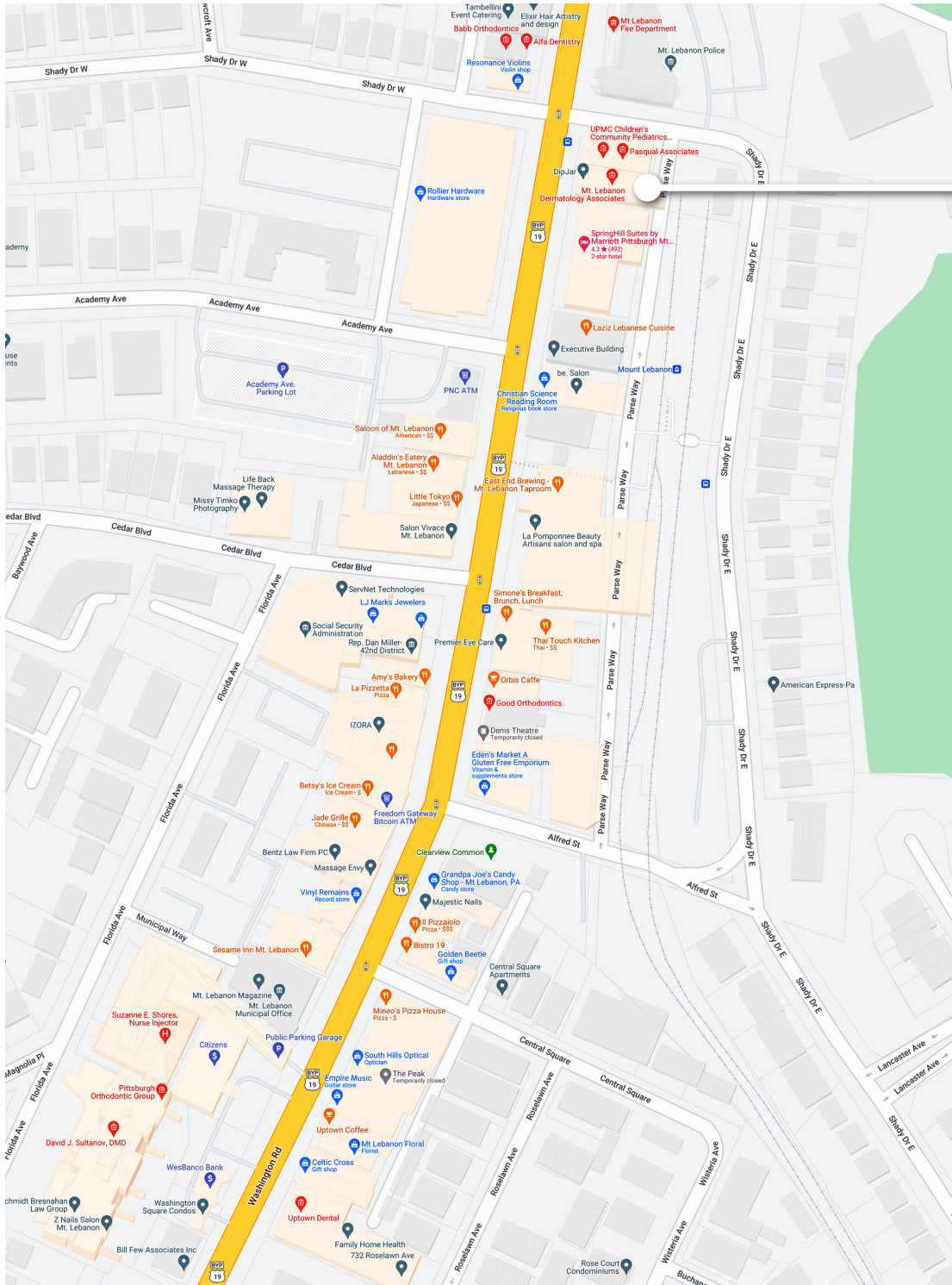
Photos



For Sublease
1,398 SF
2nd Floor Space Available

607
Washington Road
Mt. Lebanon, PA 15228

Location



607
WASHINGTON
ROAD



JOHN ELIOPOULOS
+1 412 613 6229
jeliopoulos@naibursscalo.com

KELLEY HECKATHORNE, SIOR
+1 412 670 4248
khoover@naibursscalo.com