

FOR LEASE

Washington Federal Building
5322 N. Division St
Spokane, WA 99207

CENTRAL LOCATION



AVAILABLE FOR OCCUPANCY

SPACE AVAILABLE

- Suite 201 - 4,980 RSF
\$22.00 Full Service
- Lower Level - 2,629 RSF
\$6.00 NNN

James G. Quigley, Managing Broker
509.755.7560 or jgq@khco.com

Erik Nelson, Managing Broker
509.755.7514 or erik.nelson@khco.com

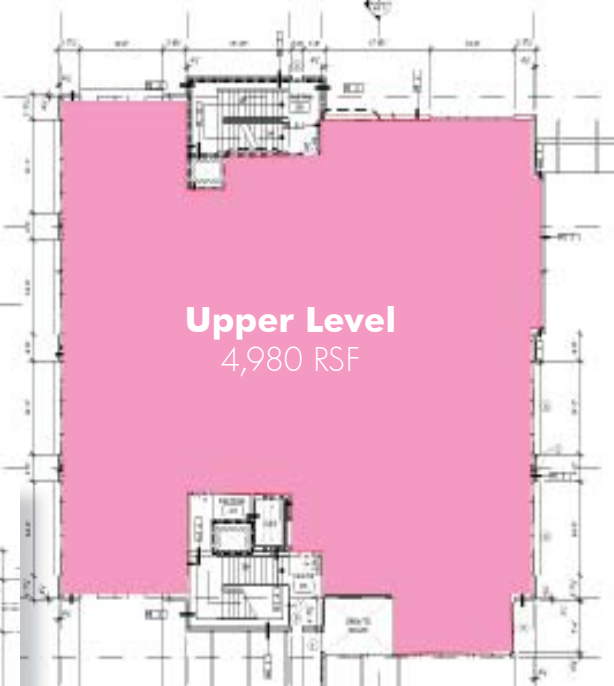
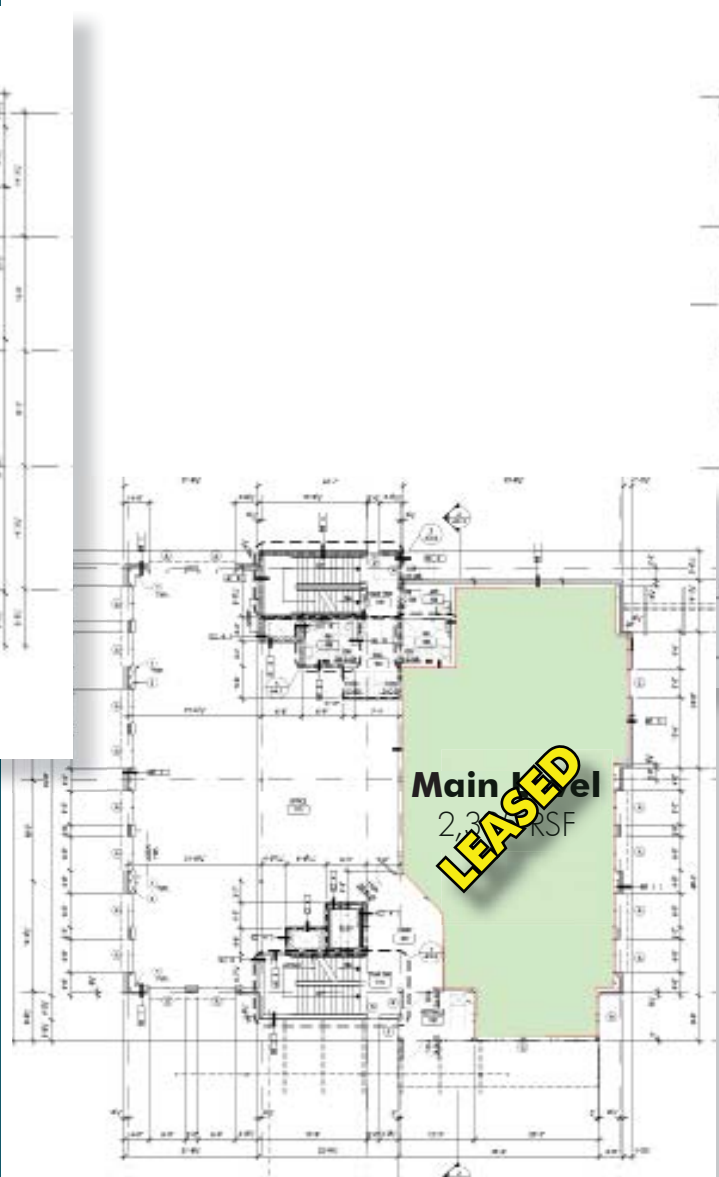
601 W. Main Ave, Ste 400
Spokane, WA 99201

**KIEMLE &
HAGOOD
COMPANY**

509.838.6541
khco.com



No warranty or representation, expressed or implied, is made by Kiemle & Hagood Company, its agents or its employees as to the accuracy of the information contained herein. All information furnished is from sources deemed reliable and submitted subject to errors, omissions, change of terms and conditions, prior sale, lease or financing, or withdrawal without notice. No one should rely solely on the above information, but instead should conduct their own investigation to independently satisfy themselves.



Floor Plans

SPACE AVAILABLE

- Suite 201 - 4,980 RSF
\$22.00 Full Service
- Lower Level - 2,629 RSF
\$6.00 NNN

Property Amenities:

- Space Planning Service Provided
- Signage
- Tenant Improvement Allowance Negotiable
- NNN's Estimated at \$6.00 PSF
- includes CAMs, RE Taxes, and Insurance
- Parcel #36323.2122
- Ample On-site Parking
- Fiber Optics/T-1 Line Available
- Total Building SF - 17,758 SF

James G. Quigley, Managing Broker
509.755.7560 or jgq@khco.com

Erik Nelson, Managing Broker
509.755.7514 or erik.nelson@khco.com

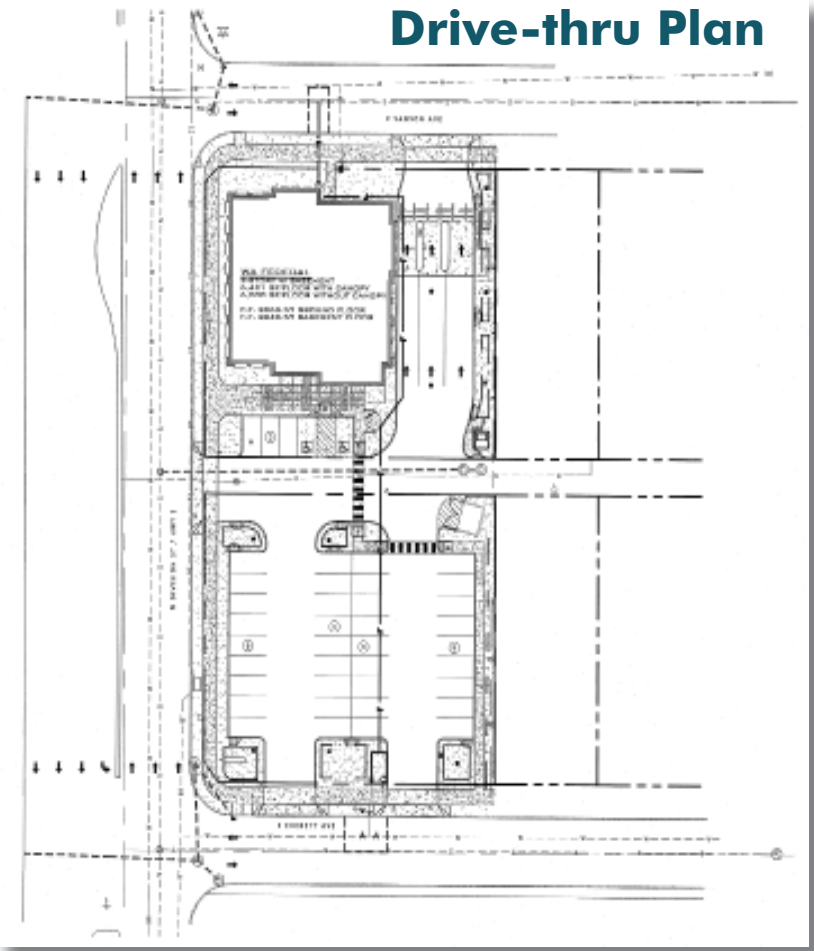
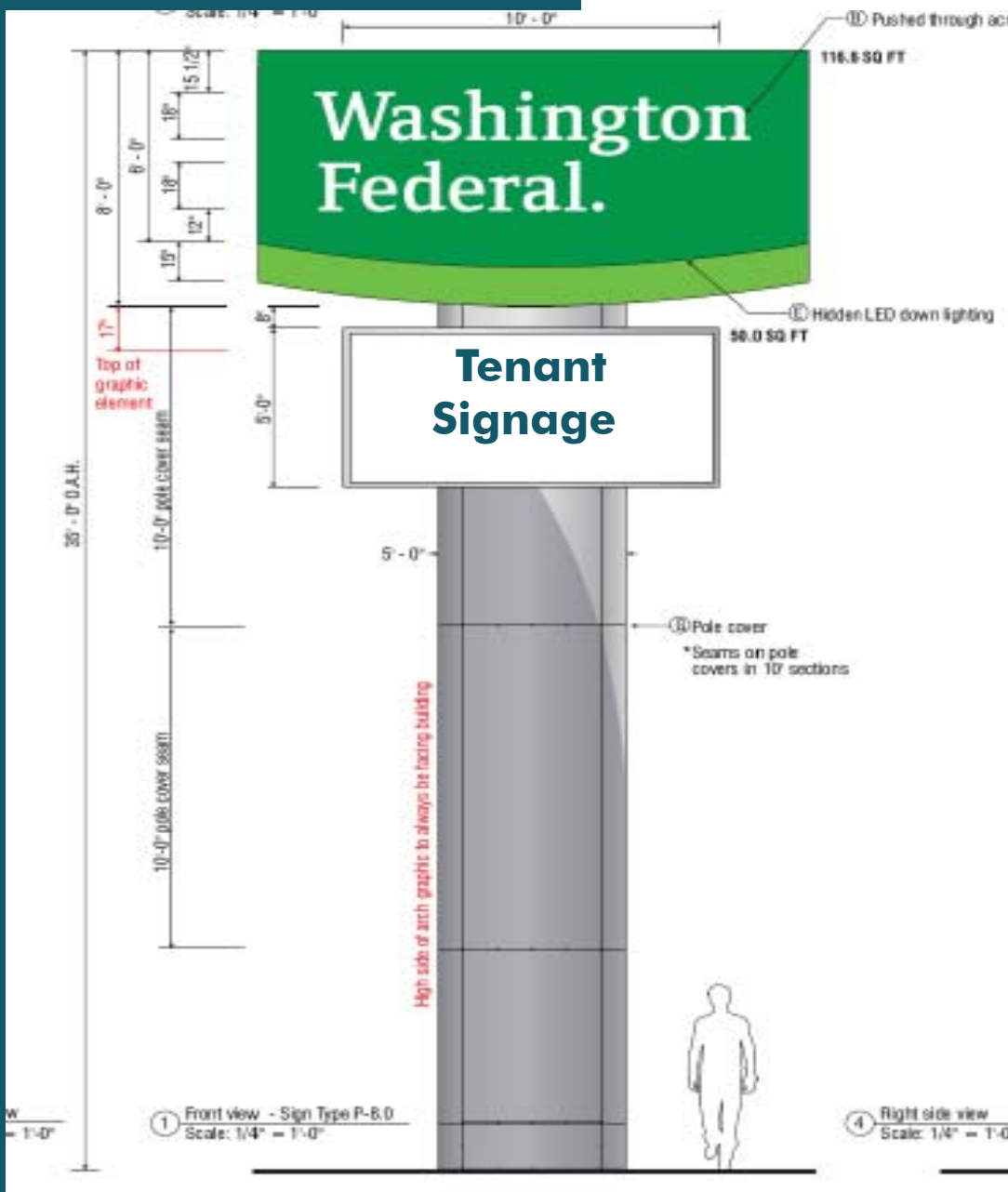
601 W. Main Ave, Ste 400
Spokane, WA 99201

**KIEMLE &
HAGOOD
COMPANY**

509.838.6541
khco.com



No warranty or representation, expressed or implied, is made by Kiemle & Hagood Company, its agents or its employees as to the accuracy of the information contained herein. All information furnished is from sources deemed reliable and submitted subject to errors, omissions, change of terms and conditions, prior sale, lease or financing, or withdrawal without notice. No one should rely solely on the above information, but instead should conduct their own investigation to independently satisfy themselves.



James G. Quigley, Managing Broker
509.755.7560 or jgq@khco.com

Erik Nelson, Managing Broker
509.755.7514 or erik.nelson@khco.com

601 W. Main Ave, Ste 400
Spokane, WA 99201

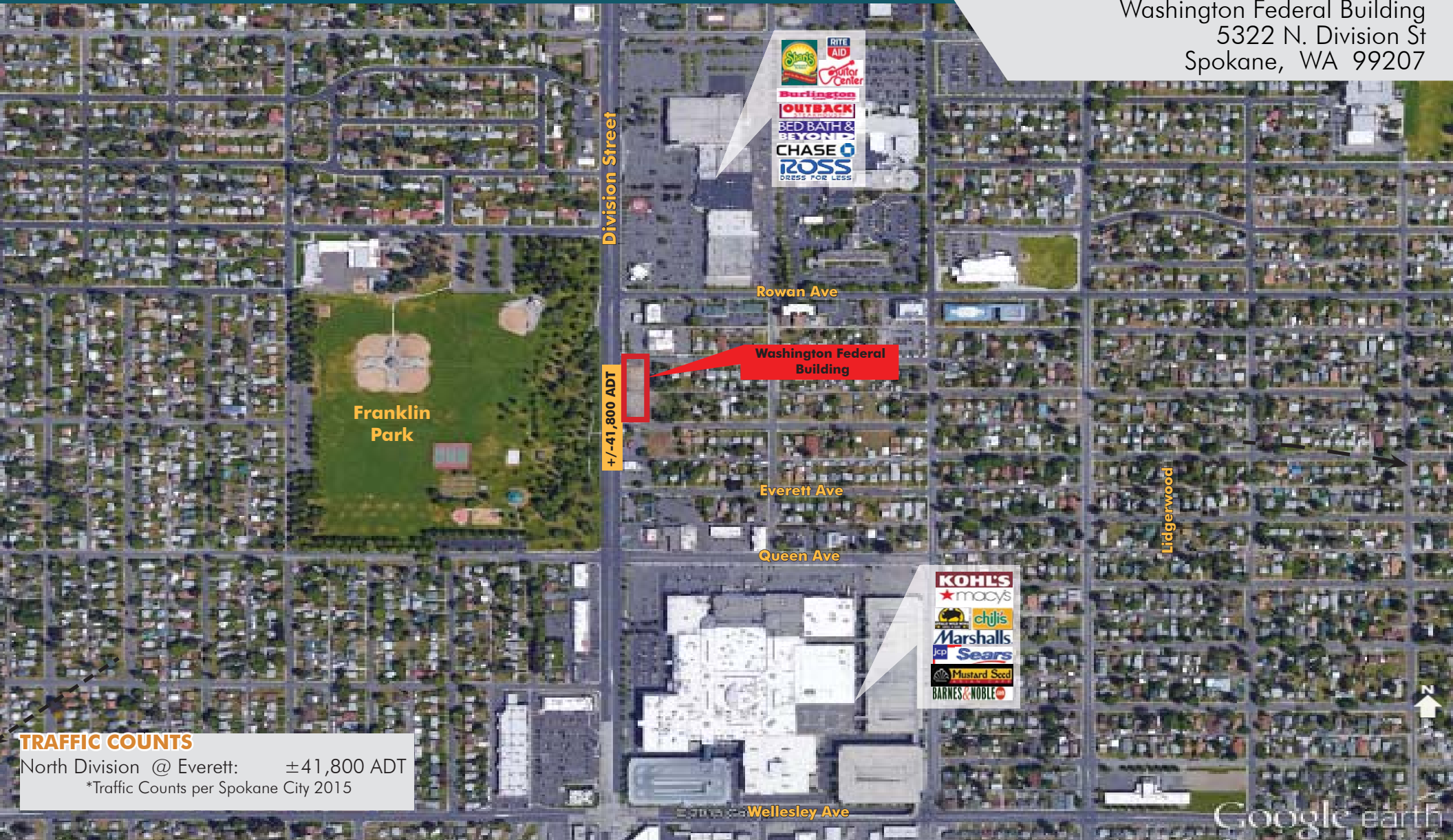
**KIEMLE &
HAGOOD
COMPANY**

509.838.6541
khco.com

No warranty or representation, expressed or implied, is made by Kiemle & Hagood Company, its agents or its employees as to the accuracy of the information contained herein. All information furnished is from sources deemed reliable and submitted subject to errors, omissions, change of terms and conditions, prior sale, lease or financing, or withdrawal without notice. No one should rely solely on the above information, but instead should conduct their own investigation to independently satisfy themselves.

FOR LEASE

Washington Federal Building
5322 N. Division St
Spokane, WA 99207



TRAFFIC COUNTS

North Division @ Everett: ±41,800 ADT
*Traffic Counts per Spokane City 2015

SURROUNDING RETAIL

Macy, JC Penney, Sears, Kohls, Barnes and Noble, Marshalls, DSW Shoes, Dress Barn, Lane Bryant, Burlington Coat Factory, Rite Aid, Ross, Bed Bath & Beyond, World Wide Golf, Mens Warehouse, Mattress Firm

James G. Quigley, Managing Broker
509.755.7560 or jgq@khco.com

Erik Nelson, Managing Broker
509.755.7514 or erik.nelson@khco.com

601 W. Main Ave, Ste 400
Spokane, WA 99201

KIEMLE & HAGOOD COMPANY

509.838.6541
khco.com

No warranty or representation, expressed or implied, is made by Kiemle & Hagood Company, its agents or its employees as to the accuracy of the information contained herein. All information furnished is from sources deemed reliable and submitted subject to errors, omissions, change of terms and conditions, prior sale, lease or financing, or withdrawal without notice. No one should rely solely on the above information, but instead should conduct their own investigation to independently satisfy themselves.