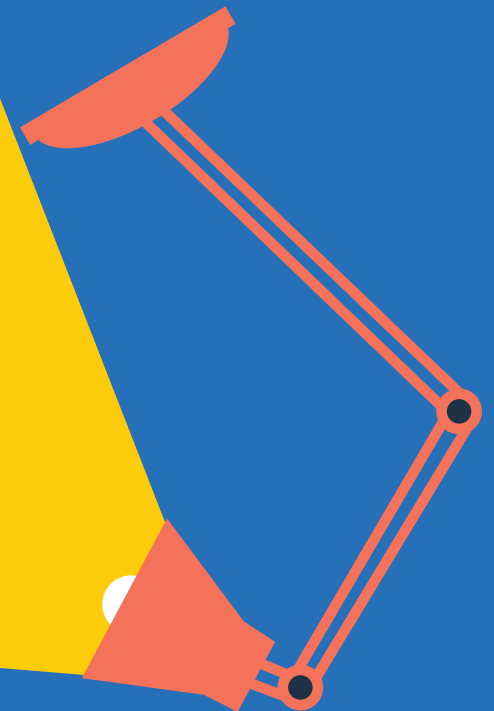


CITY T^oWER

**Plug & play office space:
fast, flexible and fully fitted.**

City Tower gives you the opportunity to lease fully-fitted office space, tailored to your business needs. This is a hassle free and fast solution, with flexible terms and short form leases available.





Be flexible with plug & play



Hassle free, fast and
no cap-ex on fit out



Flexible lease terms,
short form leases
and no exit costs*



Your own front door,
meeting rooms
and breakout areas



46 desks with room to grow (L5)
34 desks with room to grow (L18)



Be part of a 2.6 million sq ft Central
London portfolio, offering room to
expand organically



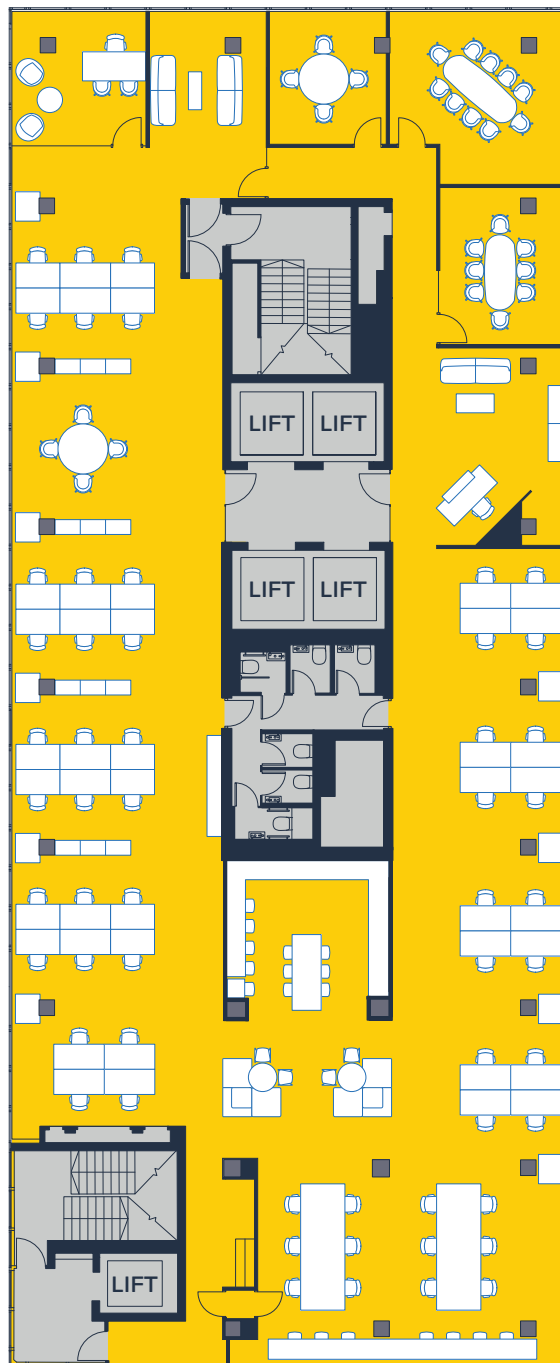
1 GB fibre-enabled building,
flood wired with CAT 5 cabling

*Based on standard plug & play fit out

L5 space plan

6,360 sq ft / 591 sq m

Basinghall Street



- Desk and chairs for 65 people (46 fixed desks)
- 3 meeting rooms (4/8/10 people)
- 1 executive office
- Kitchen area/breakout
- Dedicated reception area

We provide

- Reception/waiting area
- Meeting rooms
- Fully fitted and operational kitchen/breakout area
- Fully furnished with desks and chairs
- Soft furniture
- Storage
- 1 GB fibre-enabled building, flood wired with CAT 5 cabling
- BT and Colt Fibre

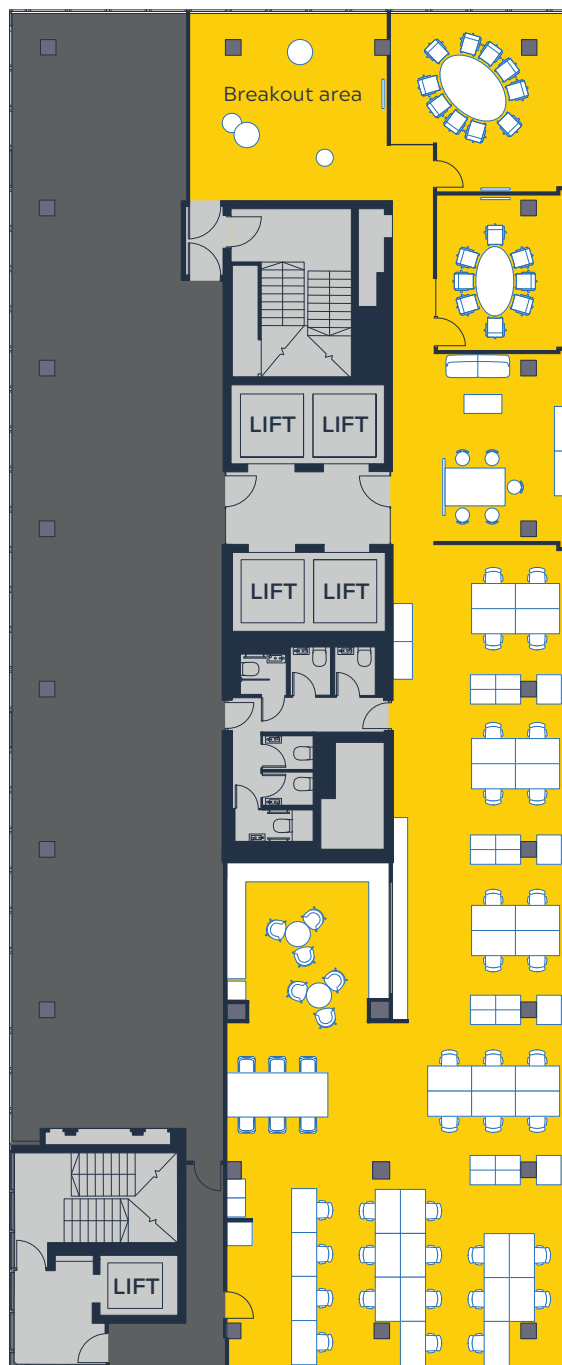
You bring with you

- Computers (including screen brackets)
- Telephones
- Electronics (TV/AV/photocopier/printer etc.)
- Wi-Fi

L18 space plan

3,810 sq ft/ 354 sq m

Basinghall Street



- Desks and chairs for 45 people (34 fixed desks)
- 2 meeting rooms (8/10 people)
- Kitchen area/breakout
- Dedicated welcome space

We provide

- Welcome space
- Meeting rooms
- Fully fitted and operational kitchen/breakout area
- Fully furnished with desks and chairs
- Soft furniture
- Storage
- 1 GB fibre-enabled building, flood wired with CAT 5 cabling
- BT and Colt Fibre

You bring with you

- Computers (including screen brackets)
- Telephones
- Electronics (TV/AV/photocopier/printer etc.)
- Wi-Fi

Plug & play space at L18, desk space



Plug & play space at L18, your own kitchen



Plug & play space at L18, your own welcome space





The building



Service

In-house and on-site management by Great Portland Estates plc



Transport

5 Underground stations within 10 minutes' walk



Views

Set apart from the City cluster, you'll have unique views across London



Crossrail

The Elizabeth line 3 minutes from your door*



Secure

Building concierge & 24 hour security



Facilities

including 9 showers, 96 lockers, 77 cycle spaces and a garden



Flexible space

Available from c. 3,800 sq ft up to c. 6,400 sq ft



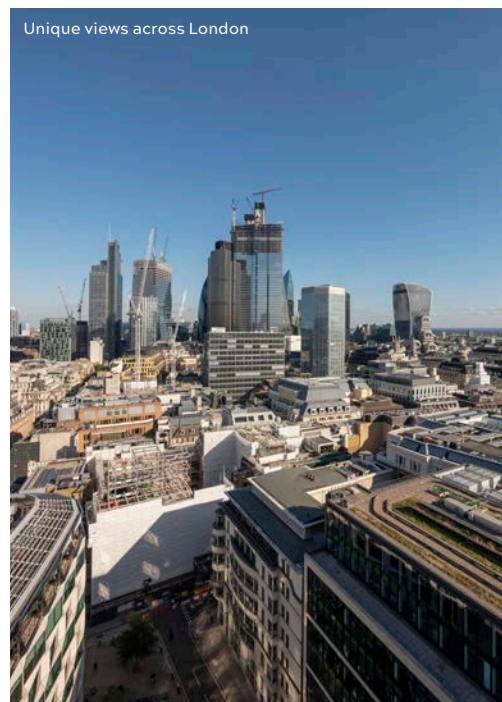
Smart Building App

App and Lifestyle Concierge providing access to service and amenity



The Hub

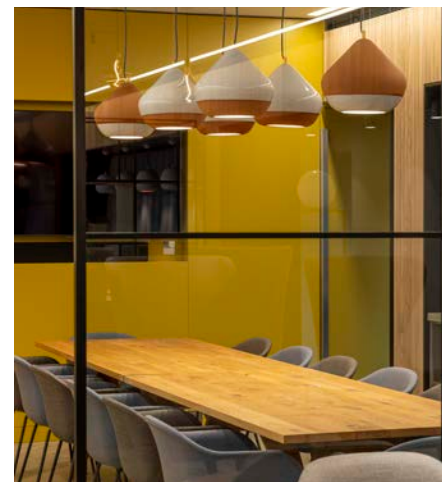
A newly renovated co-working and breakout space on the mezzanine level. A place to collaborate, meet and enjoy



Welcome to The Hub

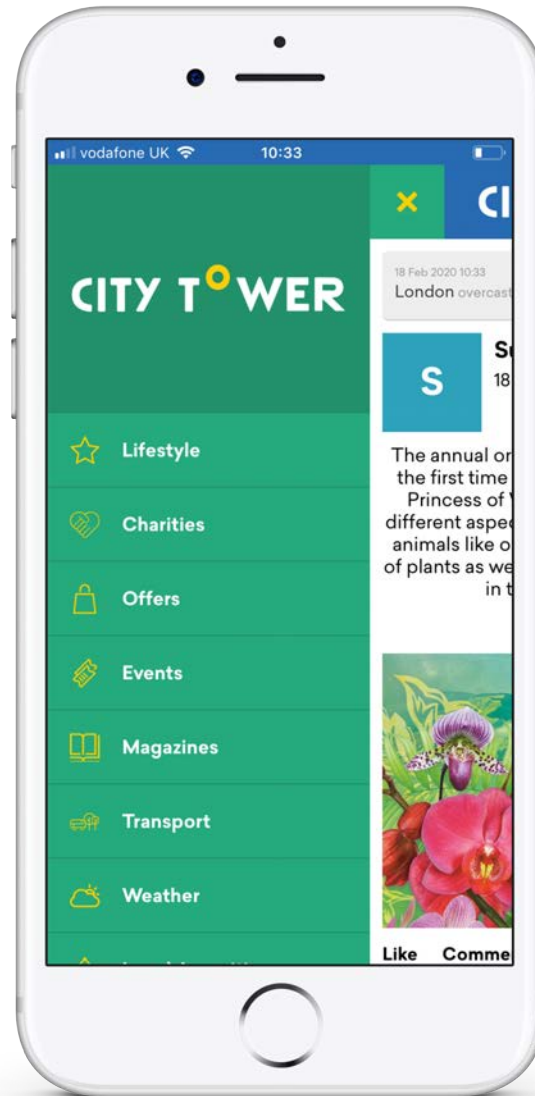
A newly renovated co-working space on the mezzanine level with soft seating breakout areas. A space to collaborate, meet or enjoy.

With cosy corners for relaxation or concentrated work and larger zones for socialising and collaboration, The Hub is well-equipped for all of your needs.



Work smarter with our building app

Feeling too hot? Need tickets for a sold out festival? Want to peruse the latest news? The smart workplace app allows you control of your environment and connects you with the local community, bringing you access to local offers and amenities, all from the palm of your hand, leaving you to focus on what's most important. We've got you covered.



Effortlessly ambient*

The building app allows you to control lighting at the touch of a button.

Effortlessly secure*

There's no security pass, no sign in; just a mobile phone in your pocket / bag. The building app is a single point of access for you and your guests.

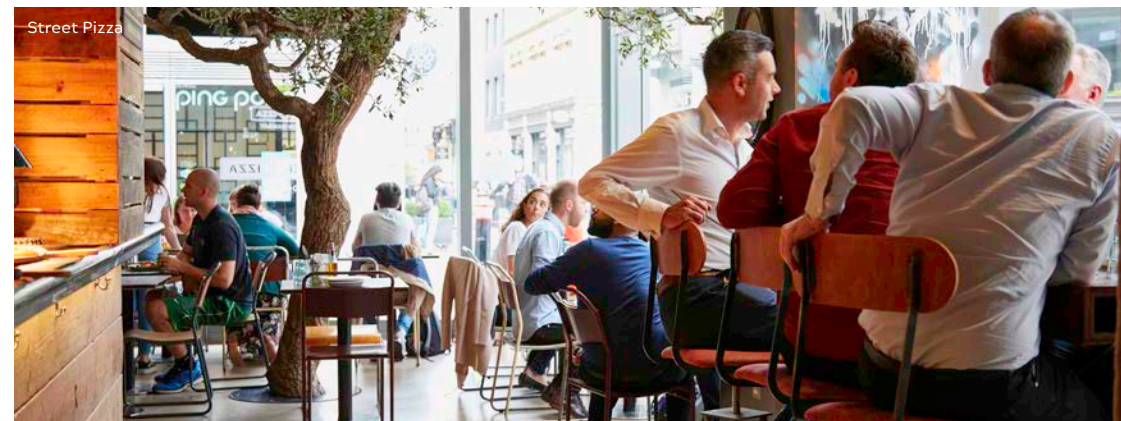
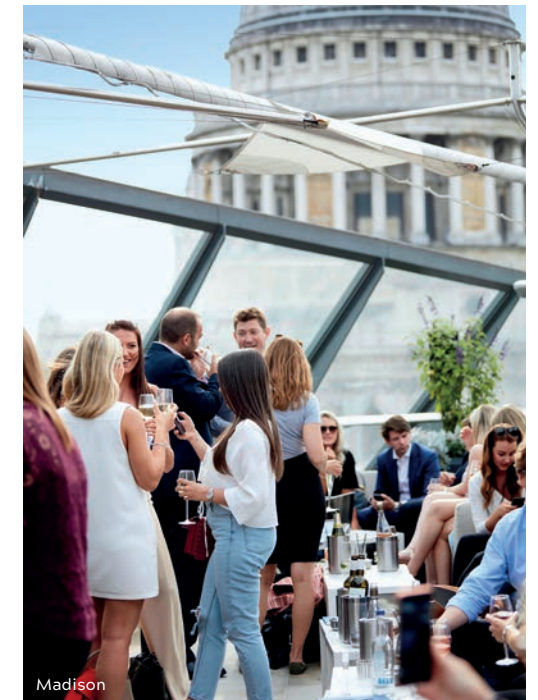
Effortlessly involved

Bringing the rich offering of the local area into the palm of your hand, the app will help you discover local offers, events and new openings and connect you with others in the building via the app's community platform.

Enjoy the easy life

Access to a Lifestyle Service. It's available 24/7. Think dry cleaning, catering, dinner reservations, Christmas parties, sold out events, business travel... The app has you covered.

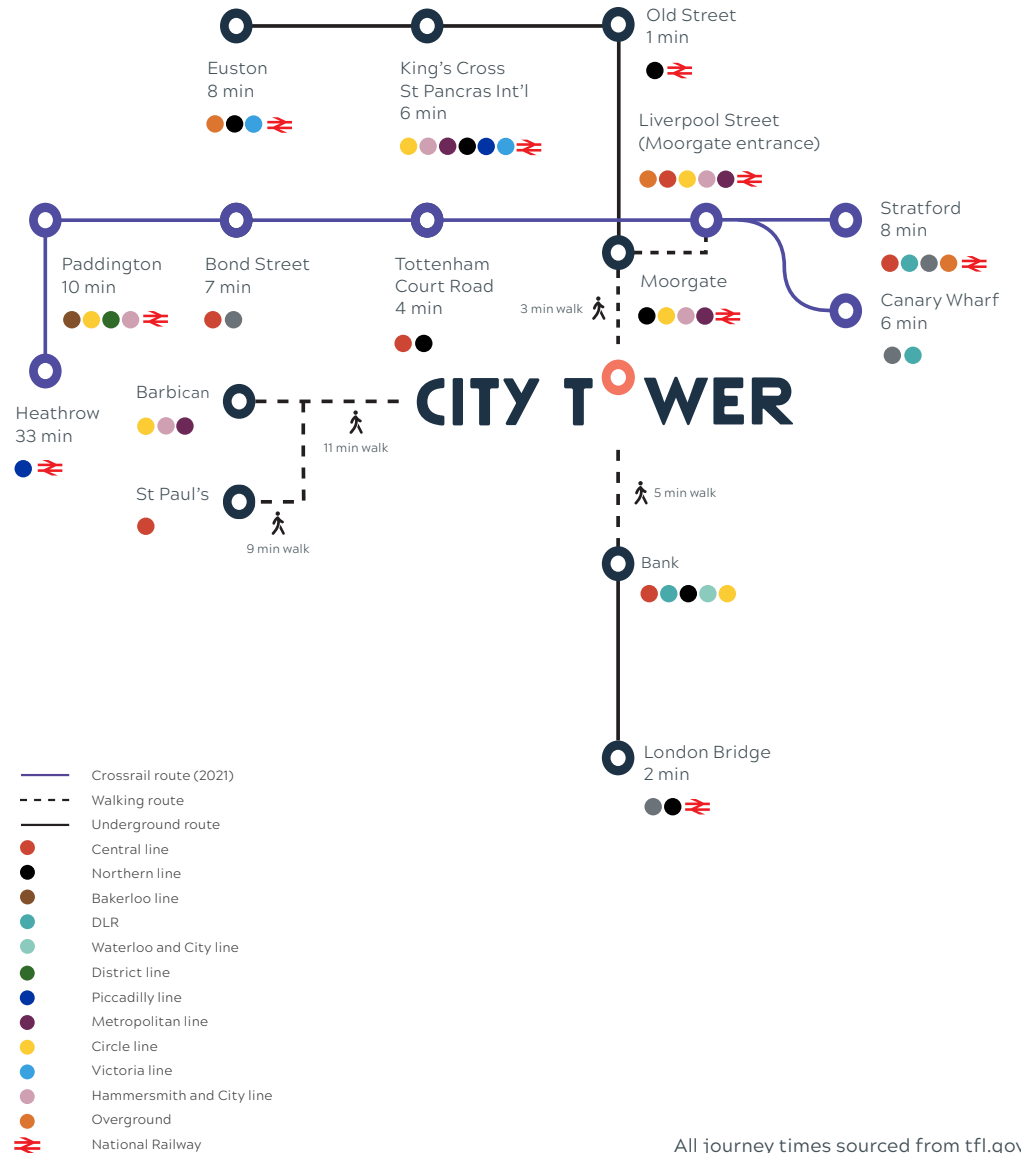
*Summer 2020



London at your fingertips

There are already 5 underground stations within 10 minutes' walk of City Tower. Plus, the arrival of Crossrail in 2021 will halve journey times across London. The Elizabeth Line will be quickly accessible from the building, with the new Moorgate entrance to Liverpool Street station situated just three minutes' walk from our front door.

Better connected



All journey times sourced from tfl.gov.uk

Get in touch



Richard Carson

020 7852 4025

richard.carson@eu.jll.com

Helena Pryce

020 7399 5842

helena.pryce@eu.jll.com



James Campbell

020 3296 2074

james.campbell@cushwake.com

Tom Fayers

020 3296 4226

tom.fayers@cushwake.com



Rob Russell-Smith

020 7647 3000

rob.russell-smith@gpe.co.uk

citytowerlondon.com

Misrepresentation act: IMPORTANT. These particulars do not form part of any contract. Cushman & Wakefield, JLL, nor any of their directors, employees or agents are authorised to give or make any warranty or representation on behalf of any party. Whilst information and particulars are given in good faith, intending purchasers or tenants must satisfy themselves independently as to the accuracy of all matters on which they intend to rely. All negotiations are subject to contract. BS4221. February 2020.

