

RETAIL/OFFICE/RESTAURANT/BAR

# Mary May House



*Celebrate Bourbon  
in this absolutely  
stunning, beautifully  
renovated historic  
building in downtown  
Bardstown, Kentucky*



## 110 W. Flaget Street, Bardstown, KY

- 3,286± SF plus additional attic of 1,061± SF on .30 acres
- First floor has boutique liquor store, restaurant/bar, retail store, kitchen, outdoor patio with plenty of seating, restroom and storage
- Second floor offers bed and breakfast. The Mary May Suite The Marketplace Suite with full wet bar and bathroom
- Complete renovation of the interior in 2013 exposes much of the original 200 year old architecture
- Other features include private entrance to 20+ parking spaces, additional alley entrance, free public parking lot and beautiful handcrafted bourbon barrel bar
- Building lends itself to restaurant, retail, live/work or any service use
- Real Estate Only for Sale. Business Not Included
- For Sale: \$475,000, FF&E negotiable

**Rhonda Karageorge, CCIM**  
(502) 744-9175  
(502) 379-6003  
rk@ccre.biz

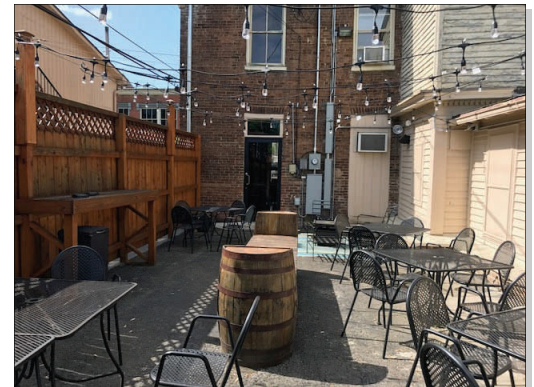
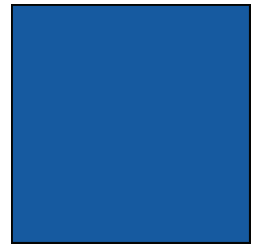
**COMMONWEALTH  
COMMERCIAL  
REAL ESTATE**

Commonwealth Commercial Real Estate, 10444 Bluegrass Parkway, Louisville, Kentucky 40299  
Phone: (502) 379-6000 | [www.ccre.biz](http://www.ccre.biz) | Licensed in Kentucky, Indiana and Ohio

We obtained this information from sources we believe are reliable, however, we make no guarantee, warranty or representation about it. It is provided subject to the possibility of errors, omissions, change of price, rental or other conditions, prior sale, lease or financing, or withdrawal without notice. Images or plans presented are not architectural or "as built" drawings and are presented to give an approximation of space/dimensions and, therefore, no warranty or representation, express or implied, is made to their accuracy. It is your responsibility to independently verify that the property is acceptable to you and for your intended use.

RETAIL/OFFICE/RESTAURANT/BAR

# Mary May House



**Rhonda Karageorge, CCIM**  
(502) 744-9175  
(502) 379-6003  
[rk@ccre.biz](mailto:rk@ccre.biz)

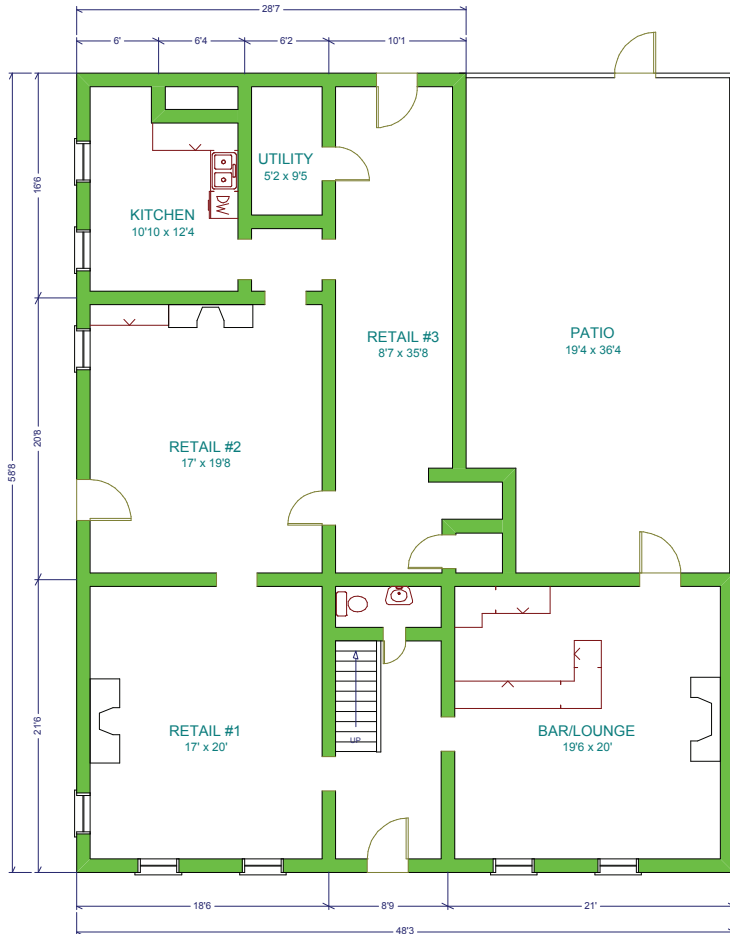
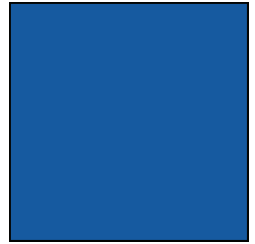
**COMMONWEALTH  
COMMERCIAL  
REAL ESTATE**

Commonwealth Commercial Real Estate, 10444 Bluegrass Parkway, Louisville, Kentucky 40299  
Phone: (502) 379-6000 | [www.ccre.biz](http://www.ccre.biz) | Licensed in Kentucky, Indiana and Ohio

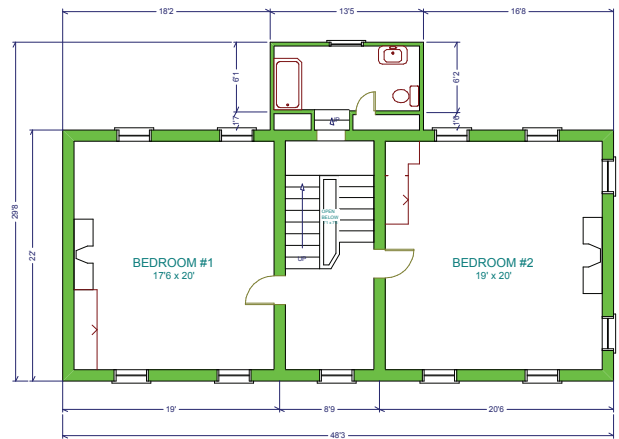
We obtained this information from sources we believe are reliable, however, we make no guarantee, warranty or representation about it. It is provided subject to the possibility of errors, omissions, change of price, rental or other conditions, prior sale, lease or financing, or withdrawal without notice. Images or plans presented are not architectural or "as built" drawings and are presented to give an approximation of space/dimensions and, therefore, no warranty or representation, express or implied, is made to their accuracy. It is your responsibility to independently verify that the property is acceptable to you and for your intended use.

# RETAIL/OFFICE/RESTAURANT/BAR

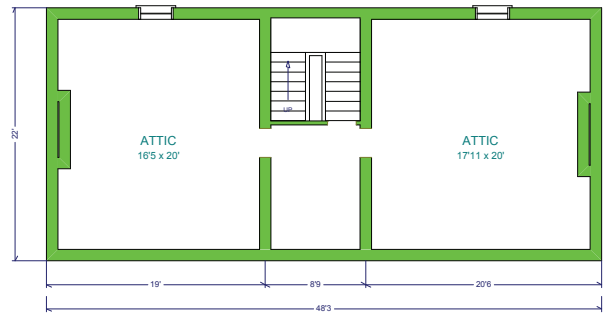
## Mary May House



**1ST FLOOR**  
2136 sq ft



**2ND FLOOR**  
1150 sq ft



**ATTIC (UNFINISHED)**  
1061 sq ft

**Rhonda Karageorge, CCIM**  
(502) 744-9175  
(502) 379-6003  
rk@ccre.biz

**COMMONWEALTH  
COMMERCIAL  
REAL ESTATE**

Commonwealth Commercial Real Estate, 10444 Bluegrass Parkway, Louisville, Kentucky 40299  
Phone: (502) 379-6000 | [www.ccre.biz](http://www.ccre.biz) | Licensed in Kentucky, Indiana and Ohio

We obtained this information from sources we believe are reliable, however, we make no guarantee, warranty or representation about it. It is provided subject to the possibility of errors, omissions, change of price, rental or other conditions, prior sale, lease or financing, or withdrawal without notice. Images or plans presented are not architectural or "as built" drawings and are presented to give an approximation of space/dimensions and, therefore, no warranty or representation, express or implied, is made to their accuracy. It is your responsibility to independently verify that the property is acceptable to you and for your intended use.