

# WEHR INDUSTRIAL PARK PHASES 1 THRU 8

SPRINGFIELD, GREENE COUNTY, MISSOURI

APPROXIMATE FLOOD PLAIN ELEVATION  
FIRM MAP 290149 0005 B, & 0006 B  
EFFECTIVE DATE 10/16/1991  
LOCATION REVISED TO FIT CITY OF  
SPRINGFIELD 2' CONTOUR MAP ELEVATIONS  
PER CITY OF SPRINGFIELD PROVIDED BY  
Errin Kemper, Professional Engineer  
Stormwater Services Division  
Department of Public Works  
City of Springfield

WEST BY-PASS

NICHOLS STREET

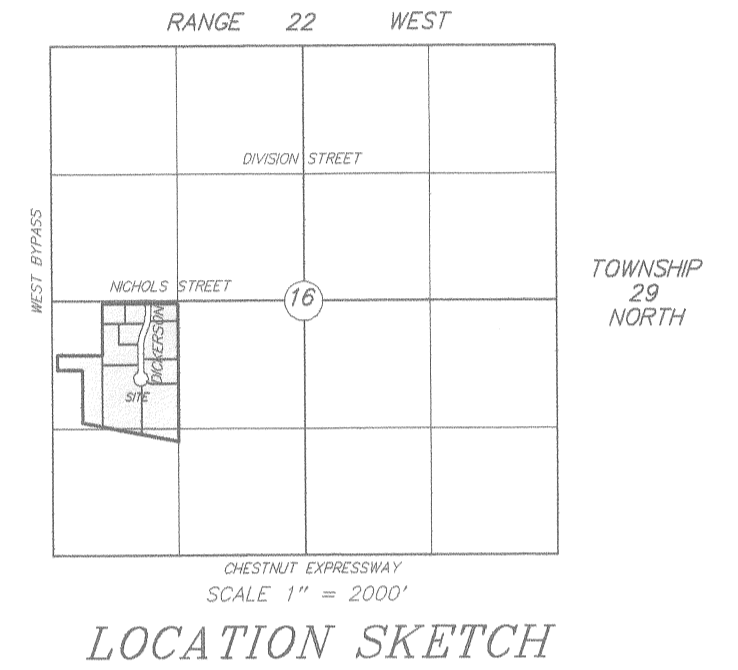
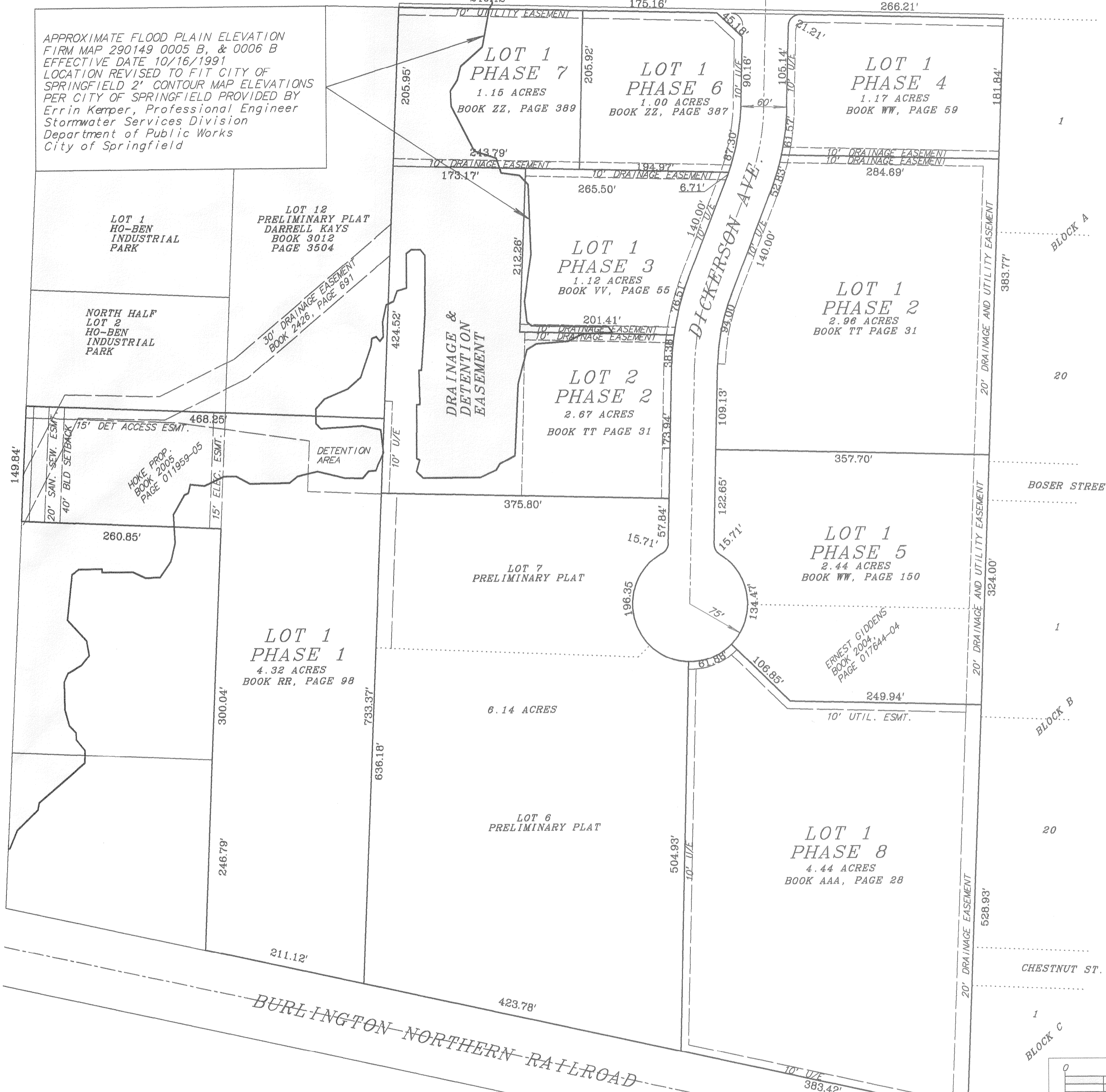
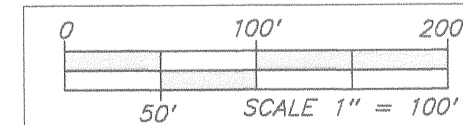


EXHIBIT ONLY  
NOT A LEGAL SURVEY



Address:		EIP ● --- EXISTING IRON PIN
Job No.:	0809-030	SIP ○ --- SET IRON PIN
Date:	10/06/08	--X--X-- FENCELINE
Drawn By:	JAD	P - PLAT DISTANCE
Checked By:	JAD	M - MEASURED DISTANCE
		D - DEED DISTANCE

**ZARK MOUNTAIN**  
Consultants Engineers & Surveyors Inc.  
3827 S. TIMBERCREEK  
SPRINGFIELD, MO 65807  
(417) 889-6590  
Fax (417) 882-4228