

AHWATUKEE 48



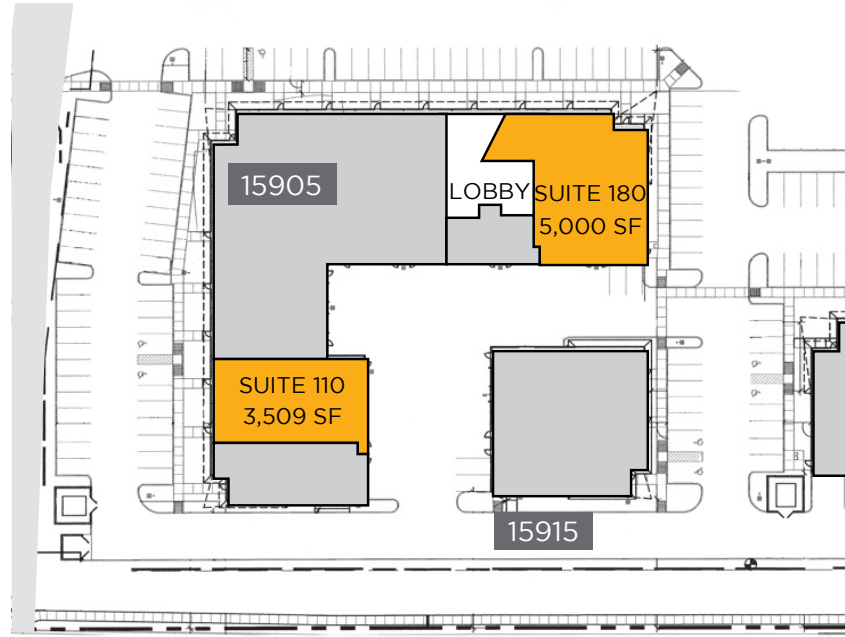
15905-15915 46TH ST. & 15920-15930 48TH ST. | PHOENIX, AZ 85048

OFFICE | FLEX | MEDICAL

CBRE

PROPERTY HIGHLIGHTS

Boasting a prime location with access to I-10 and the Loop 202, Ahwatukee 48 is surrounded by numerous amenities at 15905-15915 46th Street & 15920-15930 48th Street in Phoenix. Freeway access to the office/flex space is available via Chandler Boulevard. Ahwatukee 48 is in close proximity to exciting retail and dining experiences including: Arriba Mexican Grill, VaBene, Spinato's Pizzeria, RA Sushi, AMC Ahwatukee 24, LA Fitness, Trader Joe's and Sprouts. Ahwatukee 48 is ±15 minutes from Sky Harbor International Airport, ±28 minutes from Phoenix/Mesa Gateway Airport and ±15 minutes from Downtown Tempe.



AVAILABLE SUITES

15905 S. 46TH ST.	±SQ. FT.	TYPE	RENTAL RATE
Suite 110	3,509 SF	Medical	\$12.50/SF NNN
Suite 180	5,000 SF	Office	\$13.50/SF NNN
15930 S. 46TH ST.			
Suite 140/115	12,715 SF	Office	\$12.50/SF NNN Plug & play: 22 8x8 cubes and 33 6x8 cubes.



AMPLE AMENITIES
NEARBY



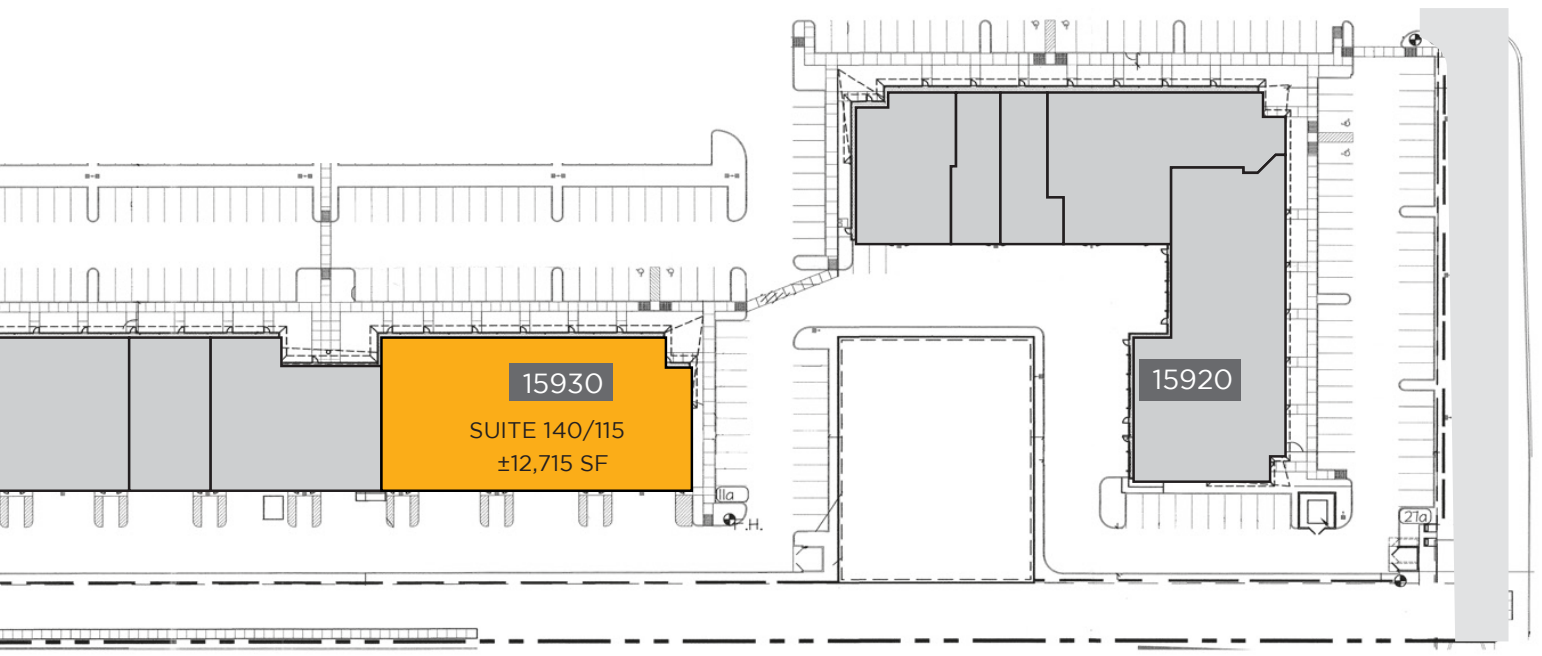
4.25:1,000
PARKING



APPROX. TWO
MINUTES
TO I-10 FWY



MONUMENT SIGN
AVAILABLE

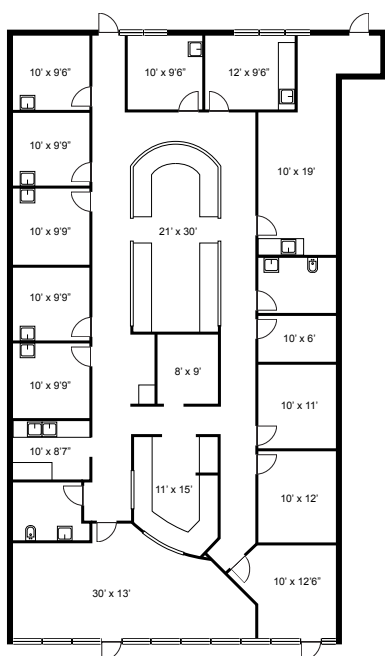


15930

SUITE 140/115
±12,715 SF

15920

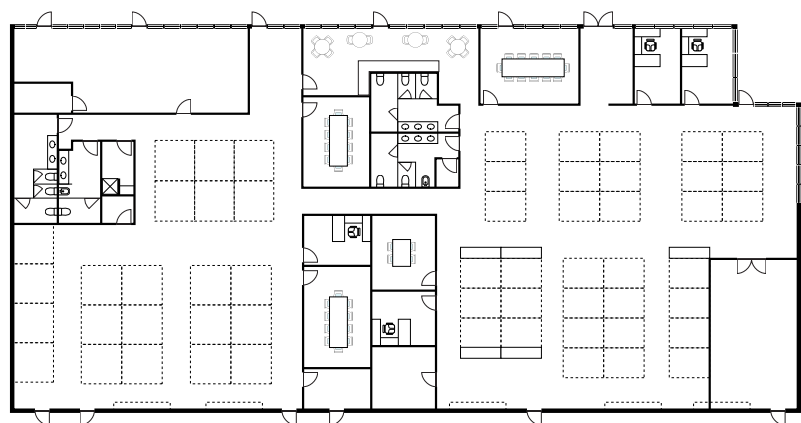
 VACANT



SUITE 110



SUITE 180

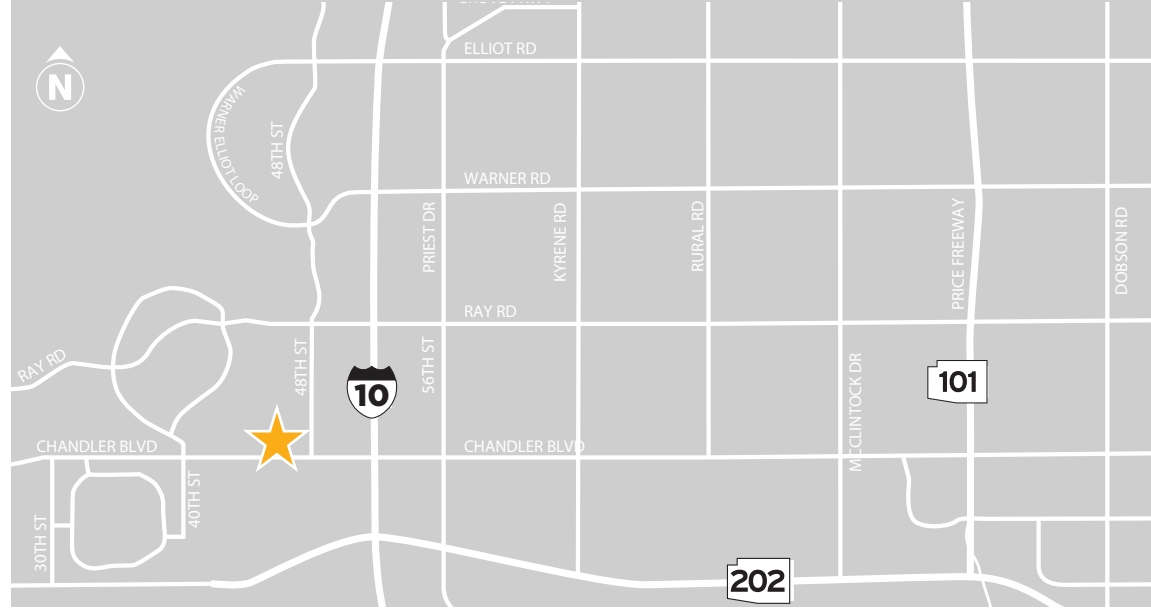


SUITE 140

NOT TO SCALE
MEASUREMENTS ARE APPROX.



NEARBY AMENITIES



FOR MORE INFORMATION, PLEASE CONTACT:

JACKIE ORCUTT, SIOR
+1 602 735 1978
jackie.orcutt@cbre.com

JAMIE SWIRTZ
+1 602 735 5630
jamie.swirtz@cbre.com

JOHN GRADY
+1 602 735 5834
john.grady@cbre.com

JONATHAN TEETER
+1 602 735 1929
jonathan.teeter@cbre.com

CBRE

2415 East Camelback Road
Phoenix, AZ 85016
www.cbre.us/phoenix

© 2018 CBRE, Inc. All rights reserved. This information has been obtained from sources believed reliable, but has not been verified for accuracy or completeness. You should conduct a careful, independent investigation of the property and verify all information. Any reliance on this information is solely at your own risk. CBRE and the CBRE logo are service marks of CBRE, Inc. All other marks displayed on this document are the property of their respective owners. Photos herein are the property of their respective owners. Use of these images without the express written consent of the owner is prohibited. PMStudio_March2019