

**FOR LEASE**

# FORMER OTR BAR

1331 WALNUT ST, CINCINNATI, OH 45202



IN  
PARTNERSHIP  
WITH

**3CDC**

[VIEW LISTING  
HERE](#)



**2,220± SF / STREET-LEVEL RESTAURANT SPACE**

[cushmanwakefield.com](https://cushmanwakefield.com)

**FOR LEASE**

# FORMER OTR BAR

1331 WALNUT STREET, CINCINNATI, OH 45202



## PROPERTY HIGHLIGHTS

- 2,220± SF of Bar space with small patio
- **Available Q1 2027**
- Premier location in the heart of Walnut Street OTR
- Located in Over-The-Rhine (OTR), one of the nation's largest urban historic districts. OTR offers rich culture, a thriving arts scene, distinctive retailers, top restaurants, and a diverse community—creating an ideal environment for growing businesses.
- Positioned one block East of Vine Street and 1 block west of Main Street. Nearby: Pepp & Delores, Wildweed, Taglio, The Eagle, Longfellow and Homemakers Bar.



## RETAIL SPACE

2,220 SF

## MARKET

OTR/CBD

## ASKING RATE

Call For Details

## NEIGHBORHOOD DEMOGRAPHICS



POPULATION

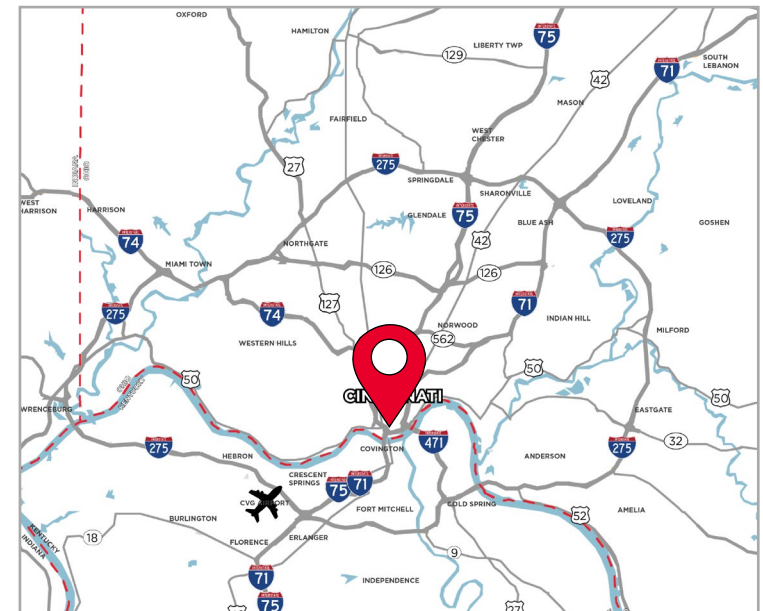


AVG. HH INCOME



DAYTIME POP.

1 Mile	32,277	\$112,231	68,427
3 Mile	160,138	\$88,752	179,457
5 Mile	335,037	\$96,413	284,107



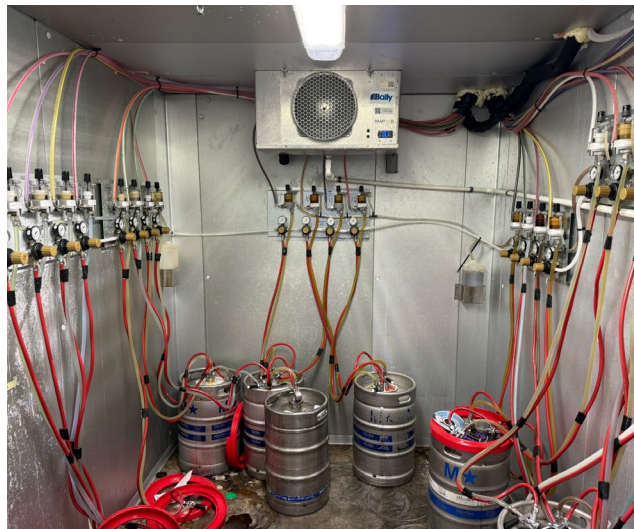
**FOR LEASE**

# FORMER OTR BAR

1331 WALNUT STREET, CINCINNATI, OH 45202



## PROPERTY PHOTOS



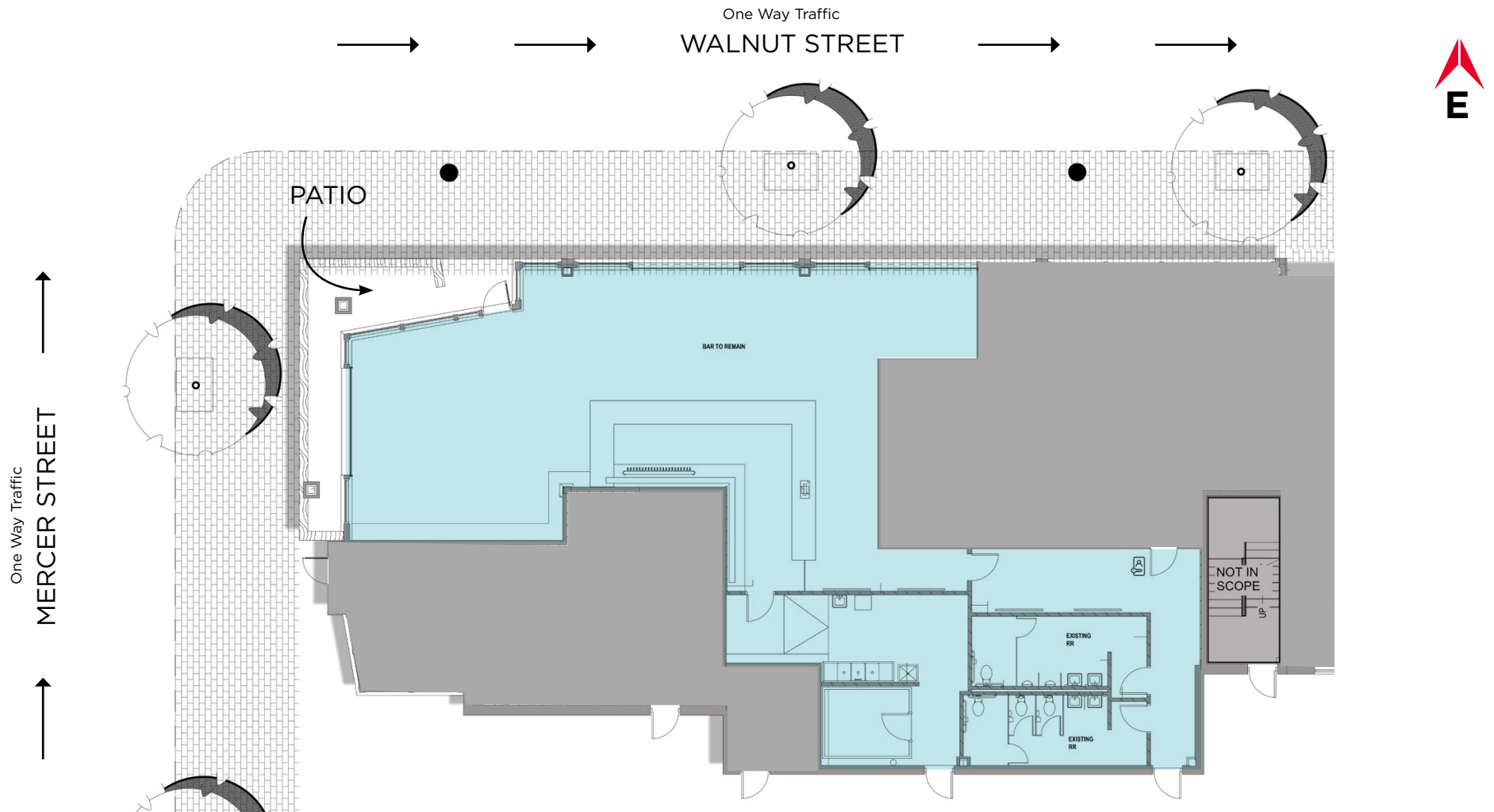
**FOR LEASE**

# FORMER OTR BAR

1331 WALNUT STREET, CINCINNATI, OH 45202



## FLOOR PLAN



FOR LEASE

# FORMER OTR BAR

1331 WALNUT STREET, CINCINNATI, OH 45202



## SITE AERIAL



FOR LEASE

# FORMER OTR BAR

1331 WALNUT STREET, CINCINNATI, OH 45202



## SUBMARKET AERIAL



For More Information, please contact:

**CLARE HOLTMEIER**

+1 513 322 0776

[clare.holtmeier@cushwake.com](mailto:clare.holtmeier@cushwake.com)

**TERRY OHNMEIS**

+1 513 763 3059

[terry.ohnmeis@cushwake.com](mailto:terry.ohnmeis@cushwake.com)

©2026 Cushman & Wakefield. All rights reserved. The information contained in this communication is strictly confidential. This information has been obtained from sources believed to be reliable but has not been verified. NO WARRANTY OR REPRESENTATION, EXPRESS OR IMPLIED, IS MADE AS TO THE CONDITION OF THE PROPERTY (OR PROPERTIES) REFERENCED HEREIN OR AS TO THE ACCURACY OR COMPLETENESS OF THE INFORMATION CONTAINED HEREIN, AND SAME IS SUBMITTED SUBJECT TO ERRORS, OMISSIONS, CHANGE OF PRICE, RENTAL OR OTHER CONDITIONS, WITHDRAWAL WITHOUT NOTICE, AND TO ANY SPECIAL LISTING CONDITIONS IMPOSED BY THE PROPERTY OWNER(S). ANY PROJECTIONS, OPINIONS OR ESTIMATES ARE SUBJECT TO UNCERTAINTY AND DO NOT SIGNIFY CURRENT OR FUTURE PROPERTY PERFORMANCE.