

# 22,438 SF

## Industrial Space For Lease



## Prologis NW Corporate Park

3575 NW Yeon Avenue - Bldg 1  
Portland, OR 97210 USA



### LOCATION

- Guilds Lake / NW Industrial Area
- Ten (10) Buildings; 678,026 SF Park

### FACILITY

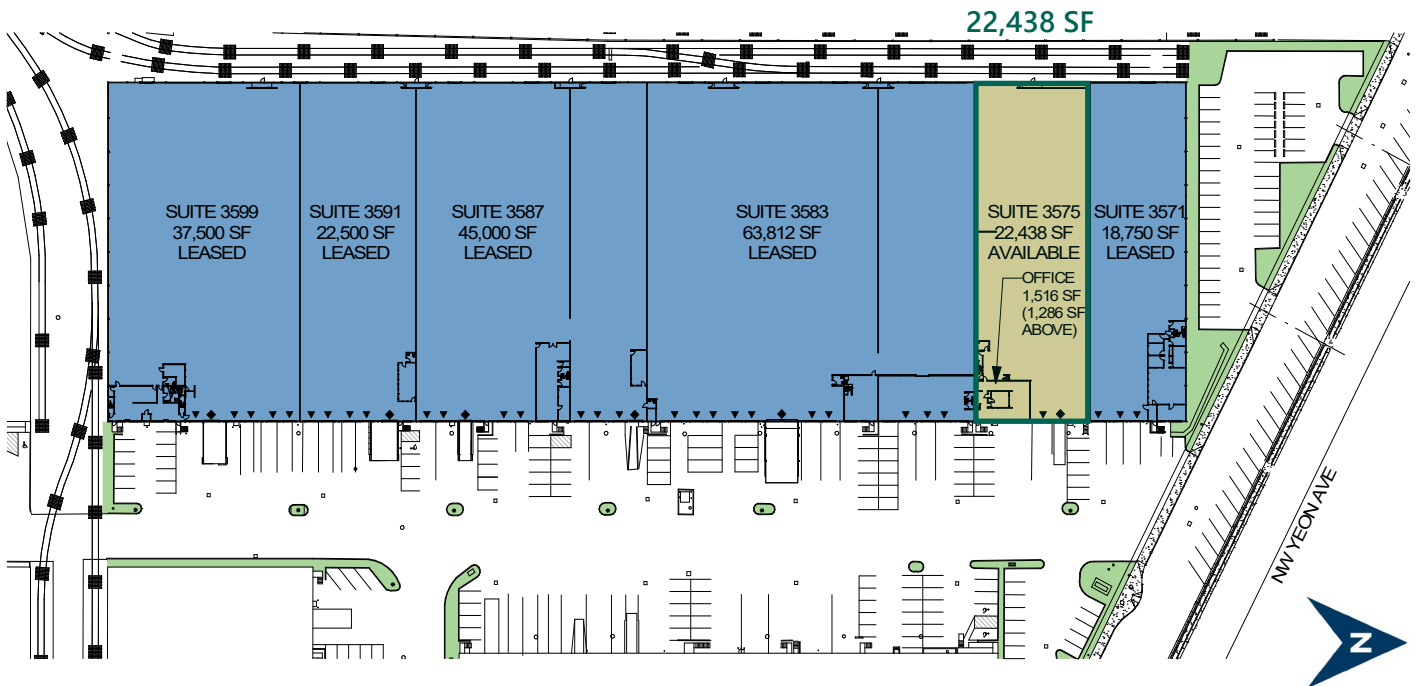
- Approximately 22,438 SF with 2,802 SF Two-Story Office (1,516 SF / 1,286 SF)
- One (1) Dock-High Door with LL, One (1) Grade-Level Door
- Fully Sprinklered
- 24' Clear Height
- 800amps, 480V, 3-phase

### ADVANTAGES AND AMENITIES

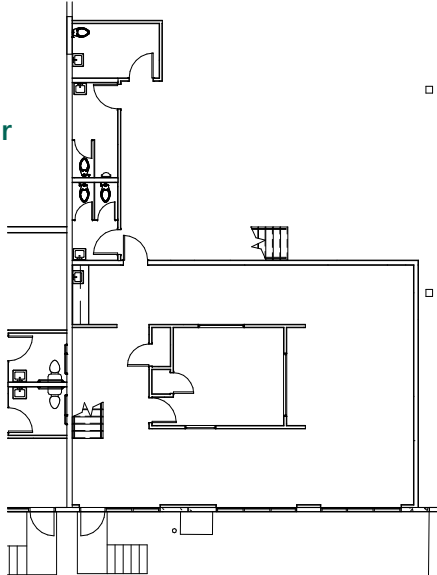
- Close-In NW Location
- Minutes to Downtown Portland
- Immediate Access to I-405 and I-5
- Park Amenities Include Food and Convenience Services
- Please Call Brokers for Current Rates

# 22,438 SF

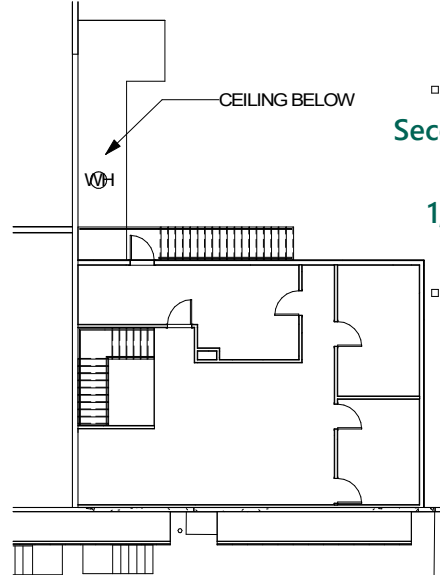
## Industrial Space For Lease



Ground Floor  
Office  
1,516 SF



Second Floor  
Office  
1,286 SF



### Capacity Commercial Group

Scott Kappes, SIOR  
scottk@capacitycommercial.com  
ph +1 503.517.9877  
cell +1 503.816.4201  
805 SW Broadway Street, Suite 600  
Portland, OR 97205

### Capacity Commercial Group

Kenny Houser, SIOR  
kenny@capacitycommercial.com  
ph +1 503.517.9875  
cell +1 503.385.6080  
805 SW Broadway Street, Suite 600  
Portland, OR 97205

### Prologis

Kurt Nelson  
knelson@prologis.com  
ph +1 503.276.7361  
4380 SW Macadam Avenue, Suite 440  
Portland, OR 97239