

STATE ST • SANTA BARBARA CA 93101

FOR LEASE • \$2.15/SF – \$2.45/SF NNN

**±753 SF – ±2,867 SF
Office/Medical/Retail Spaces**

Mountain and Mesa Views

6% CSO to Tenant's Agent



Justin Diem

805.879.9634

jdiem@radiusgroup.com

CA Lic. 02058176

Rob Hambleton

805.455.4003

rhambleton@radiusgroup.com

CA Lic. 01858350



FOR LEASE | ±753SF – ±2,867SF OFFICE/MEDICAL/RETAIL SUITES

1919 State St. | Santa Barbara, CA 93101



Office/Medical & Retail spaces with mountain and mesa views available. Conveniently located close to downtown Santa Barbara and the 101 Freeway on/off-ramp at Mission Street with private parking. Extensive renovations include turnkey suites, private restrooms and common area improvements. Please call Listing Agents for more information or to show.

Offering Specifics

Suite/Size/Lease Rate	Suite 101: ±2,867 SF (\$2.45/SF NNN) Suite 201: ±1,021 SF (\$2.15/SF NNN) Suite 204: ±1,104 SF (\$2.15/SF NNN) Suite 303: ±753 SF (\$2.15/SF NNN)
-----------------------	--

NNN's	\$0.76/SF
-------	-----------

Utilities	\$0.26/SF (Billed back utilities to tenant)
-----------	---

Term	3-5 Years
------	-----------

Parking	2/1,000 (Additional Available)
---------	--------------------------------

Zoning	C-G
--------	-----

Elevator	Yes
----------	-----

Restrooms	Private & Common
-----------	------------------

Floors	First, Second & Third
--------	-----------------------

HVAC	Yes
------	-----

Available	Immediately
-----------	-------------

To Show	Contact Listing Agents
---------	------------------------

The information provided here has been obtained from the owner of the property or from other sources deemed reliable. We have no reason to doubt its accuracy, but we do not guarantee it.

Justin Diem
805.879.9634
jdiem@radiusgroup.com
CA Lic. 02058176

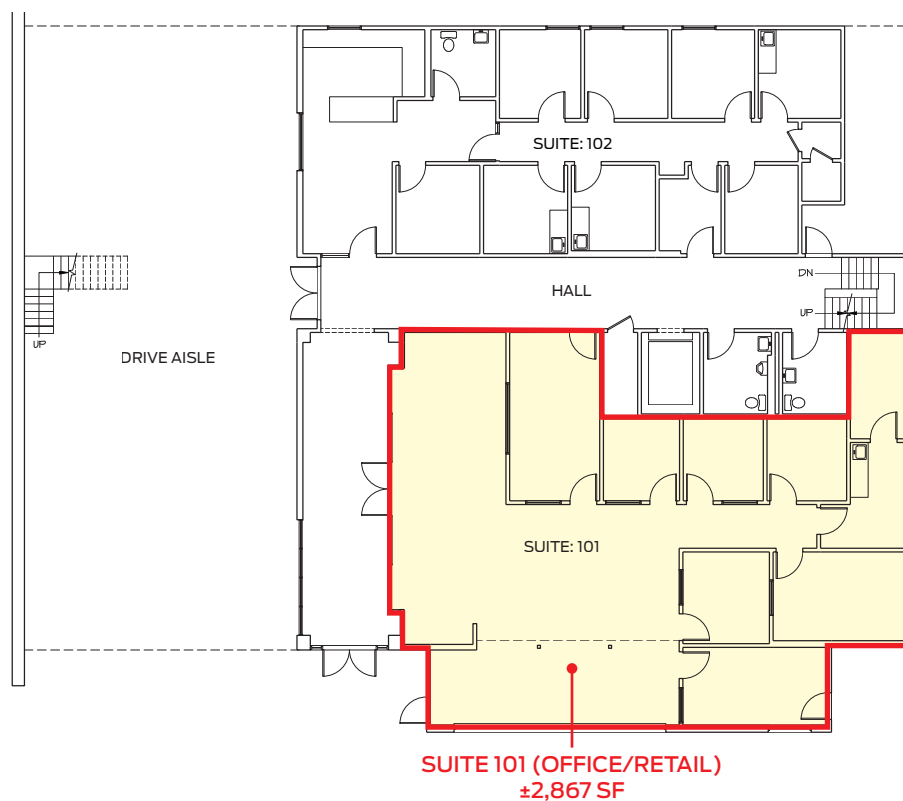
Rob Hambleton
805.455.4003
rbambleton@radiusgroup.com
CA Lic. 01858350



FOR LEASE | ±753SF – ±2,867SF OFFICE/MEDICAL/RETAIL SUITES

1919 State St. | Santa Barbara, CA 93101

FLOOR PLAN · FIRST FLOOR



FIRST FLOOR PLAN

1/8"=1'-0"



The information provided here has been obtained from the owner of the property or from other sources deemed reliable. We have no reason to doubt its accuracy, but we do not guarantee it.

Justin Diem
805.879.9634
jdiem@radiusgroup.com
CA Lic. 02058176

Rob Hambleton
805.455.4003
rbambleton@radiusgroup.com
CA Lic. 01858350

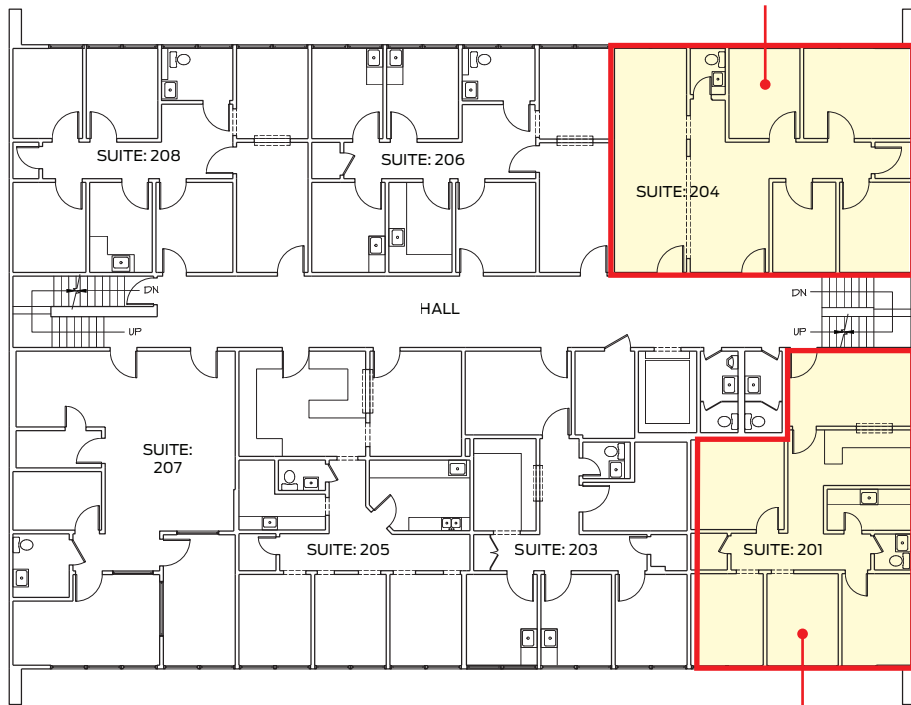


FOR LEASE | ±753SF – ±2,867SF OFFICE/MEDICAL/RETAIL SUITES

1919 State St. | Santa Barbara, CA 93101

FLOOR PLANS | SECOND & THIRD FLOORS

SUITE 204
±1,104 SF



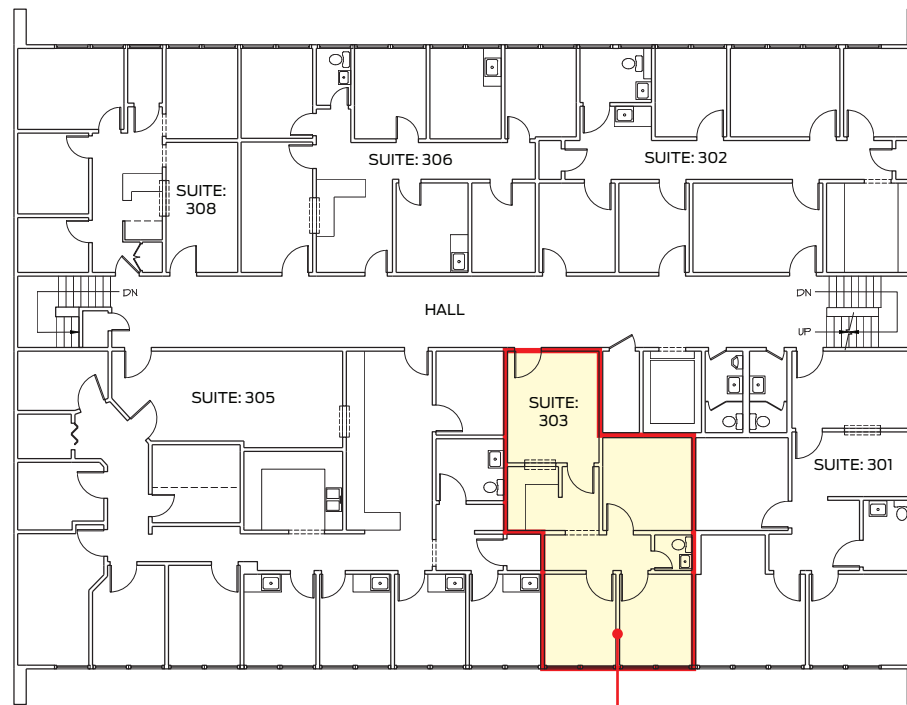
SUITE 201
±1,021 SF

SECOND FLOOR PLAN

1/8"=1'-0"



SUITE 303
±753 SF



THIRD FLOOR PLAN

1/8"=1'-0"



The information provided here has been obtained from the owner of the property or from other sources deemed reliable. We have no reason to doubt its accuracy, but we do not guarantee it.

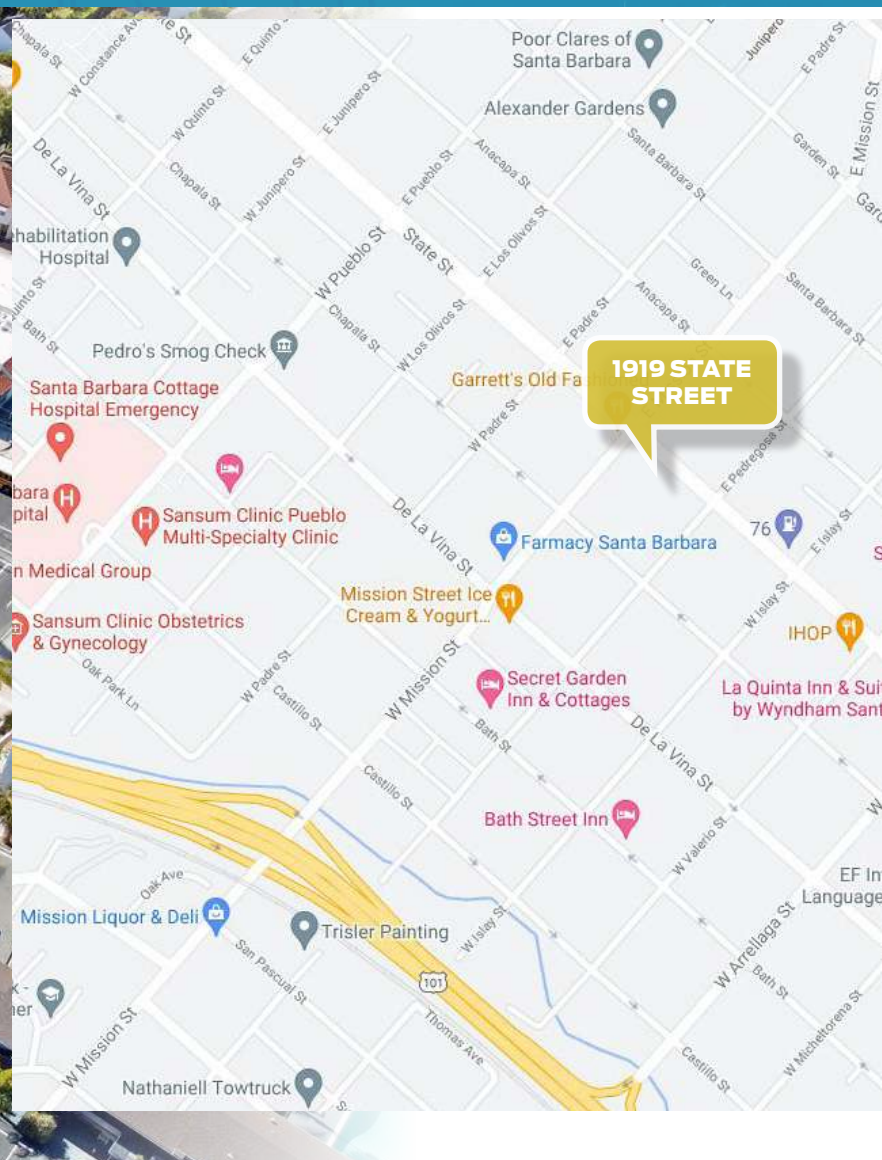
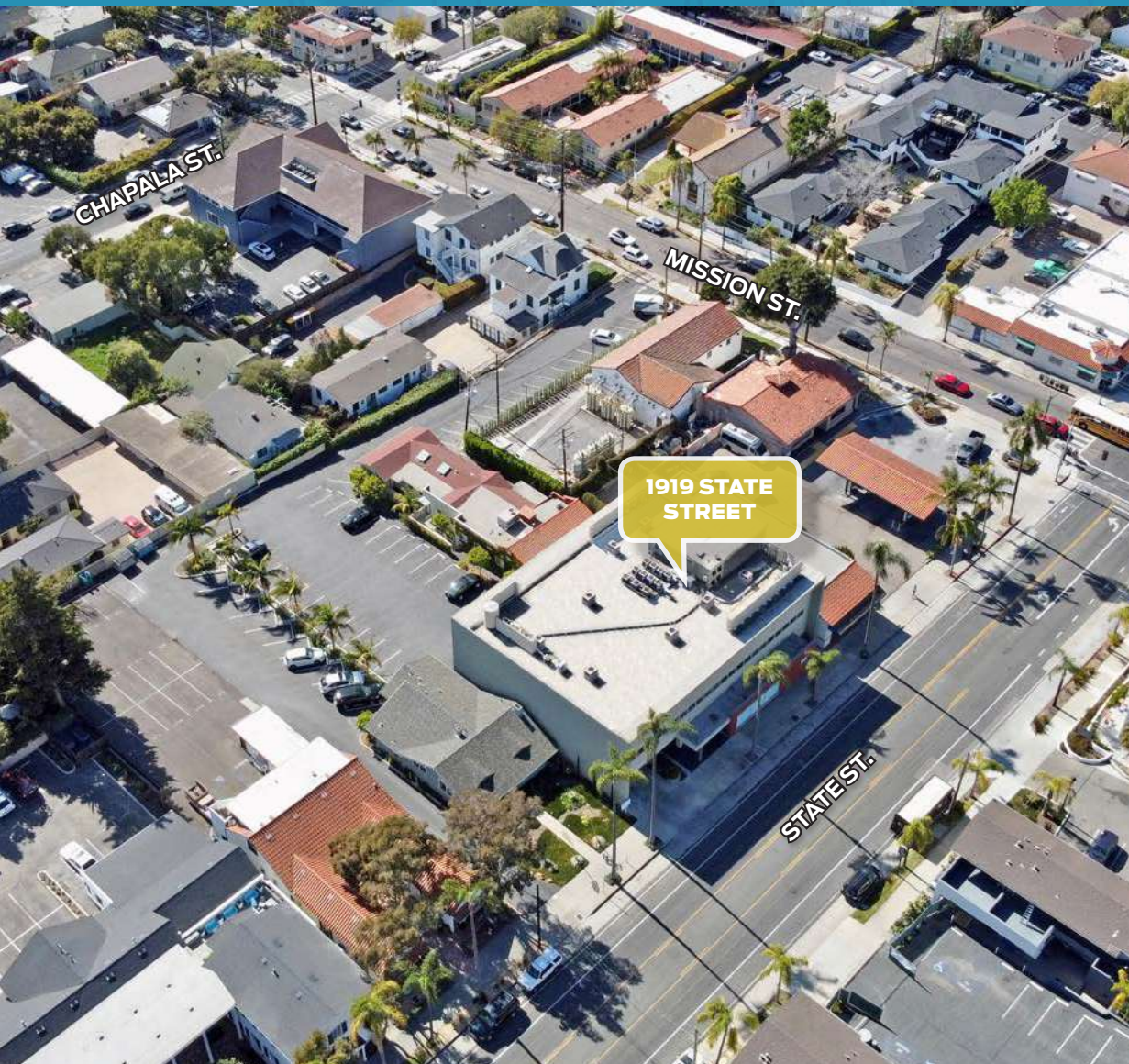
Justin Diem
805.879.9634
jdiem@radiusgroup.com
CA Lic. 02058176

Rob Hambleton
805.455.4003
rbambleton@radiusgroup.com
CA Lic. 01858350



FOR LEASE | ±753SF – ±2,867SF OFFICE/MEDICAL/RETAIL SUITES

1919 State St. | Santa Barbara, CA 93101



Justin Diem
805.879.9634
jdiem@radiusgroup.com
CA Lic. 02058176

Rob Hambleton
805.455.4003
rbambleton@radiusgroup.com
CA Lic. 01858350

