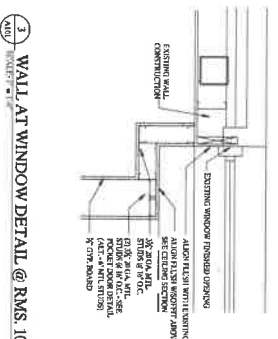
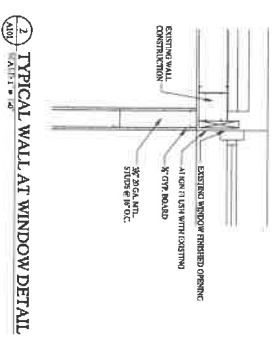


FLOOR PLAN  
 NORTH ARROW



**WALL LEGEND**

1. 1/2" GYPSUM BOARD ON 5/8" METAL STUDS @ 16" O.C. WITH 1/2" GYPSUM BOARD ON OPPOSITE SIDE

2. 1/2" GYPSUM BOARD ON 5/8" METAL STUDS @ 16" O.C. WITH 1/2" GYPSUM BOARD ON OPPOSITE SIDE

3. 1/2" GYPSUM BOARD ON 5/8" METAL STUDS @ 16" O.C. WITH 1/2" GYPSUM BOARD ON OPPOSITE SIDE

4. 1/2" GYPSUM BOARD ON 5/8" METAL STUDS @ 16" O.C. WITH 1/2" GYPSUM BOARD ON OPPOSITE SIDE

5. 1/2" GYPSUM BOARD ON 5/8" METAL STUDS @ 16" O.C. WITH 1/2" GYPSUM BOARD ON OPPOSITE SIDE

6. 1/2" GYPSUM BOARD ON 5/8" METAL STUDS @ 16" O.C. WITH 1/2" GYPSUM BOARD ON OPPOSITE SIDE

7. 1/2" GYPSUM BOARD ON 5/8" METAL STUDS @ 16" O.C. WITH 1/2" GYPSUM BOARD ON OPPOSITE SIDE

8. 1/2" GYPSUM BOARD ON 5/8" METAL STUDS @ 16" O.C. WITH 1/2" GYPSUM BOARD ON OPPOSITE SIDE

9. 1/2" GYPSUM BOARD ON 5/8" METAL STUDS @ 16" O.C. WITH 1/2" GYPSUM BOARD ON OPPOSITE SIDE

10. 1/2" GYPSUM BOARD ON 5/8" METAL STUDS @ 16" O.C. WITH 1/2" GYPSUM BOARD ON OPPOSITE SIDE

**GENERAL NOTES:**

1. ALL WORK SHALL BE DONE IN ACCORDANCE WITH THE LATEST EDITIONS OF THE BUILDING CODES AND ALL APPLICABLE REGULATIONS.
2. THE CONTRACTOR SHALL BE RESPONSIBLE FOR OBTAINING ALL NECESSARY PERMITS AND APPROVALS FROM THE LOCAL AUTHORITIES.
3. THE CONTRACTOR SHALL BE RESPONSIBLE FOR PROTECTING ALL EXISTING UTILITIES AND STRUCTURES.
4. ALL WORK SHALL BE COMPLETED WITHIN THE SPECIFIED TIME FRAME.
5. THE CONTRACTOR SHALL MAINTAIN ACCESS TO ALL ADJACENT AREAS AT ALL TIMES.
6. ALL MATERIALS AND WORKMANSHIP SHALL BE SUBJECT TO INSPECTION AND APPROVAL BY THE ARCHITECT.
7. THE CONTRACTOR SHALL BE RESPONSIBLE FOR DISPOSING OF ALL DEBRIS AND WASTE MATERIALS.
8. ALL WORK SHALL BE COMPLETED IN ACCORDANCE WITH THE SPECIFICATIONS AND DRAWINGS.
9. THE CONTRACTOR SHALL BE RESPONSIBLE FOR OBTAINING ALL NECESSARY PERMITS AND APPROVALS FROM THE LOCAL AUTHORITIES.
10. THE CONTRACTOR SHALL BE RESPONSIBLE FOR PROTECTING ALL EXISTING UTILITIES AND STRUCTURES.

**WMA ARCHITECTURE, P.C.**  
 180 SOUTH AVENUE  
 ROCHESTER, NY 14618  
 TEL: (716) 253-4343  
 FAX: (716) 253-1122  
 www.wmaarch.com

**consultant**

**revisions**

**ENDOVASCULAR SUITE**  
 1892 WINTON ROAD  
 ROCHESTER, NEW YORK 14618  
 FLOOR PLAN

DESIGN BY  
 2015-01  
 DATE  
 DRAWN BY  
 DBB  
 REVIEWED BY  
 DBB  
 SHEET NO.  
 1000000000  
 PROJECT NAME  
 ENDOVASCULAR SUITE  
 SCALE  
 1/8" = 1'-0"

**A101**