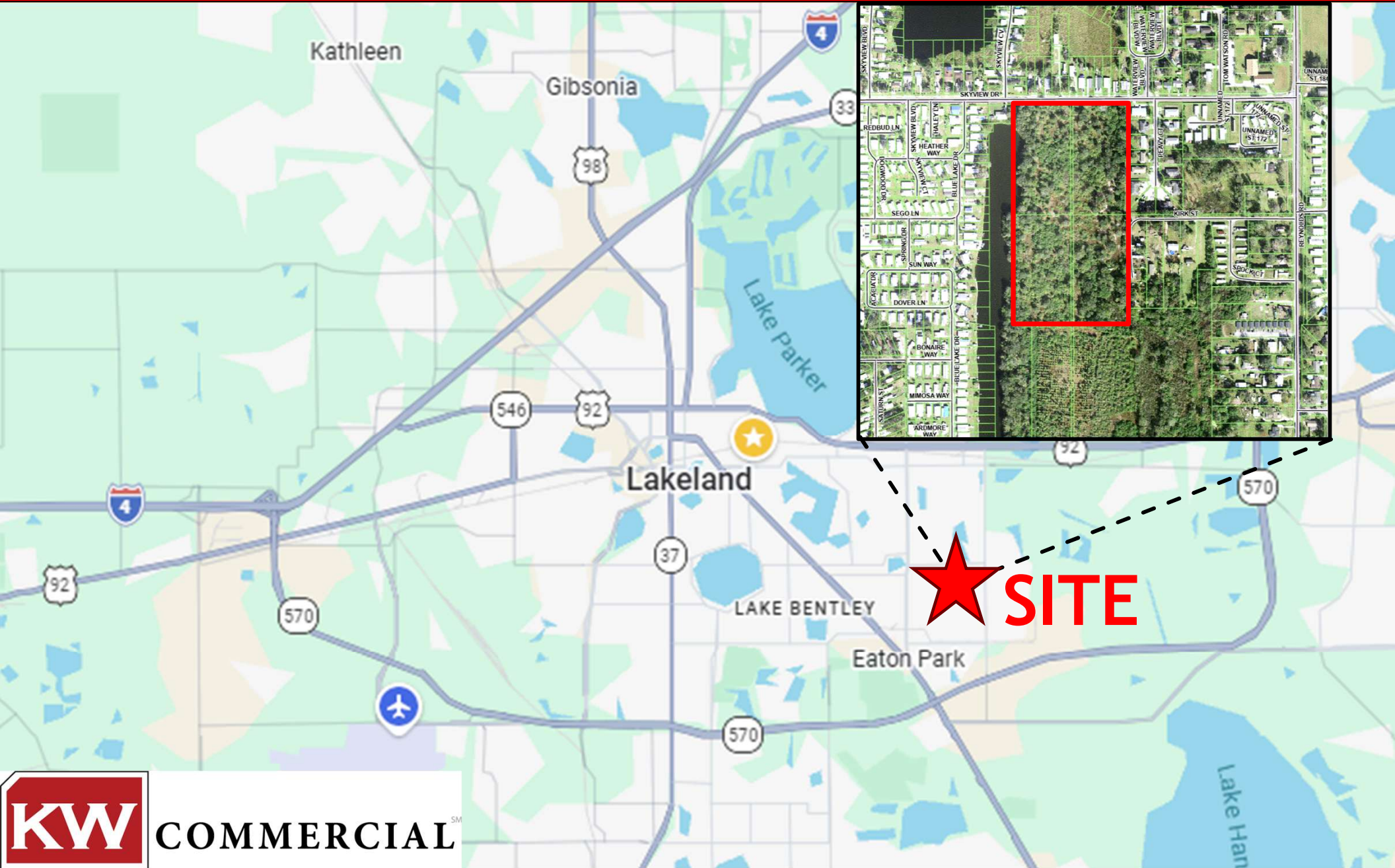


60 single-family lot subdivision on 20 AC LAKELAND, FL



SITE INFORMATION

0 Skyview Dr, Lakeland, FL 33801

Parcel ID #s: 242827-243500-000134
242827-243500-000160
242827-000000-013003
242827-000000-013021

Size: 20 acres

Zoning: RS (Residential Suburban) w/ approved SPD

Approved Development*: 60 lot single-family residential subdivision

Central Lakeland location: Unincorporated Polk County

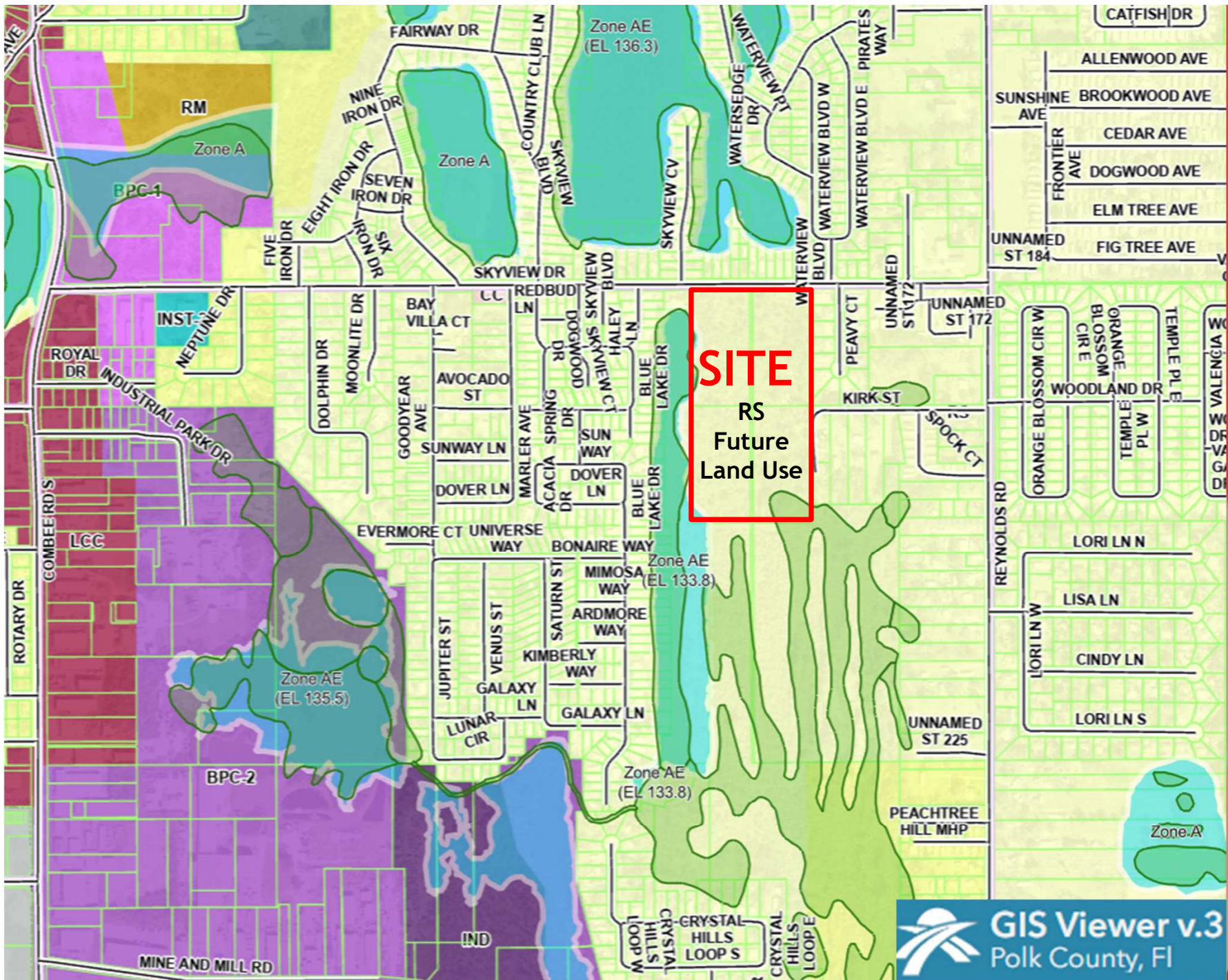
Utilities: Water, sewer, electric, internet

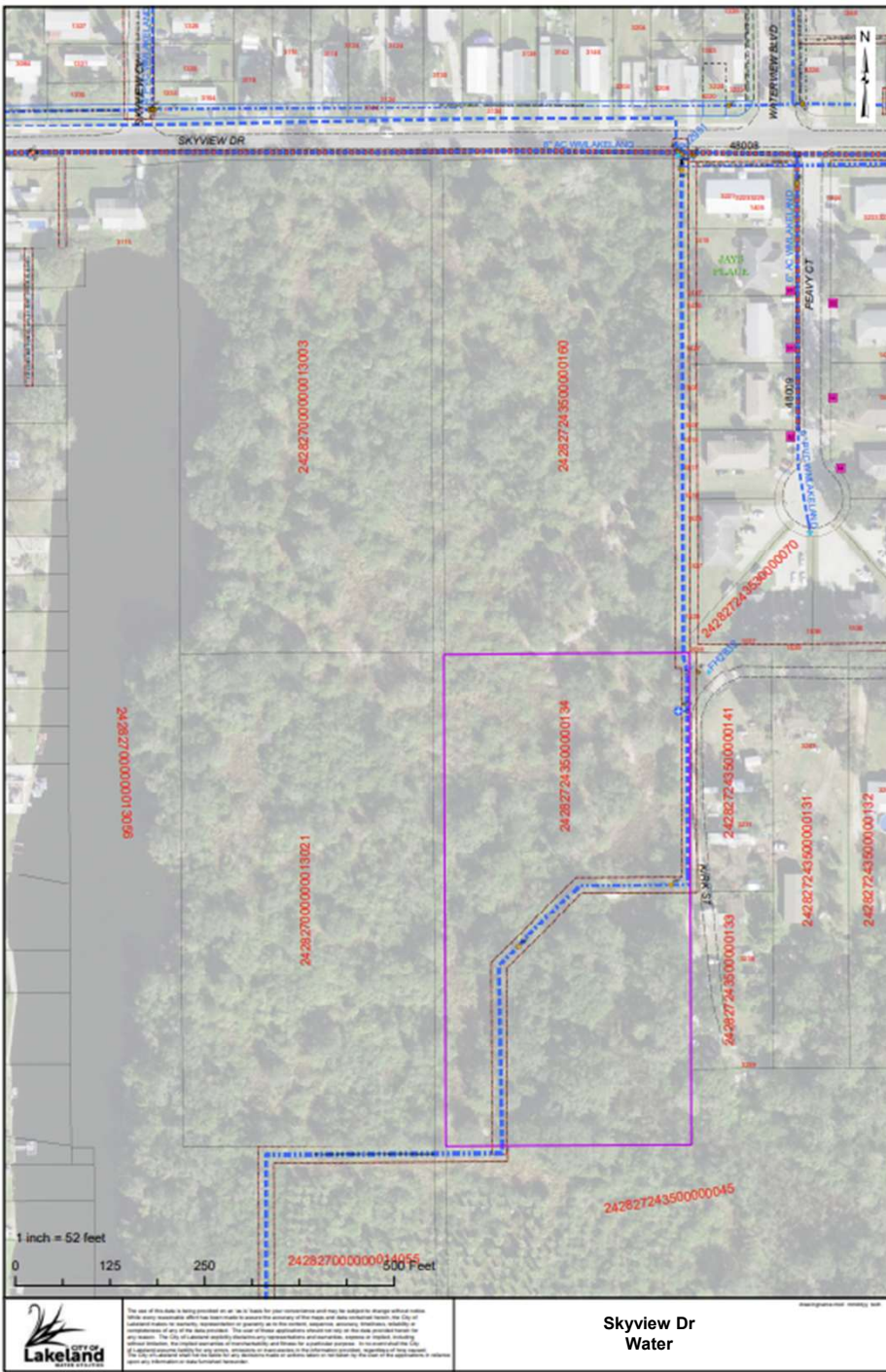
* Buyer to Conduct Own Due Diligence and Verify All Information with Polk County



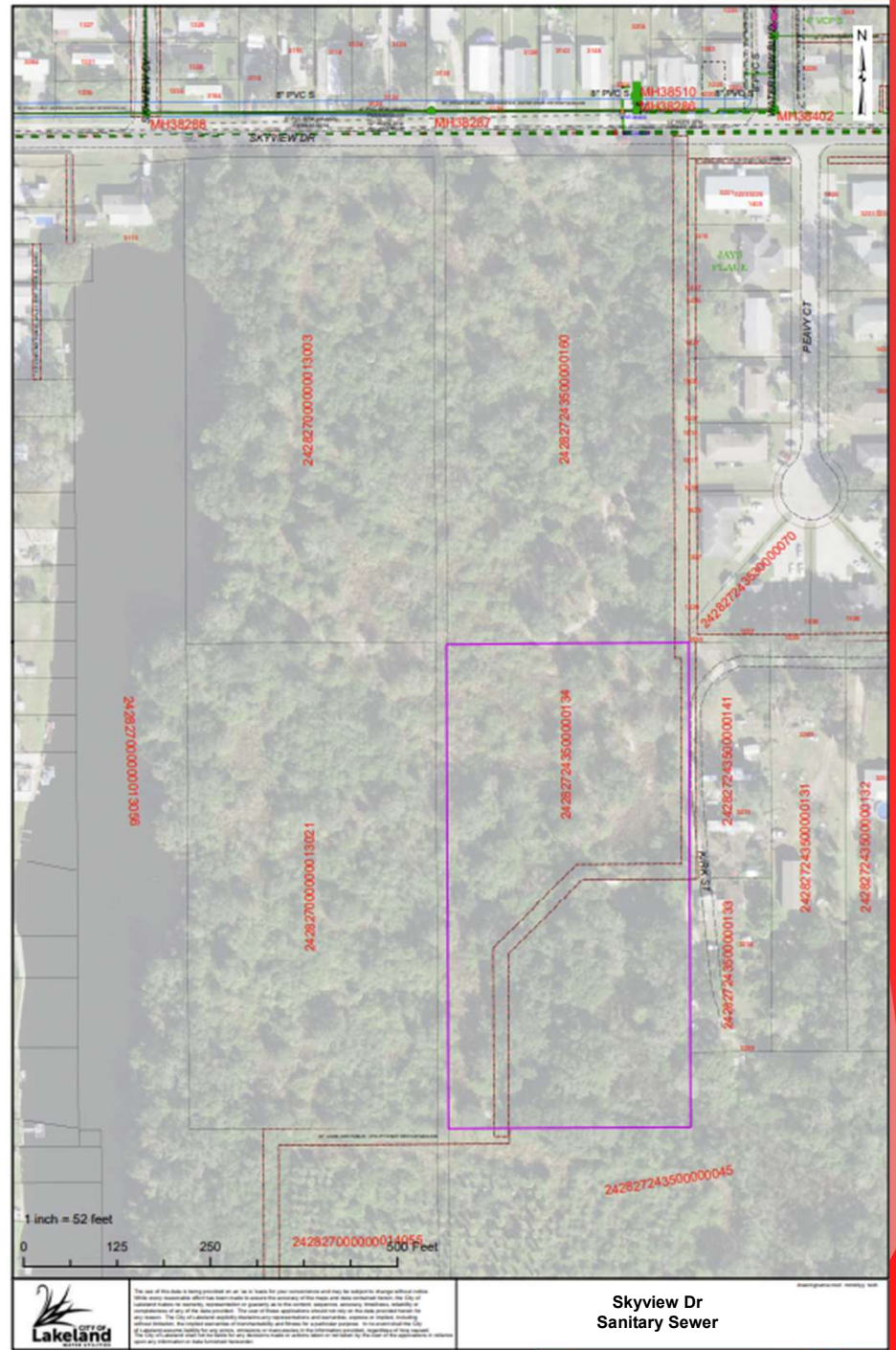








Skyview Dr
Water



Skyview Dr
Sanitary Sewer



The use of this data is being provided as an "as is" basis for your information and only be subject to change without notice. While every reasonable effort has been made to ensure the accuracy of the data and data collection methods, the City of Lakeland makes no warranty, representation or guarantee as to the content, reliability, accuracy, timeliness, validity or completeness of any of the data provided. The user of these applications should not rely on the data provided herein for any reason. The City of Lakeland expressly disclaims any representation and warranties, express or implied, including without limitation, the implied warranties of merchantability and fitness for a particular purpose. In the event that the City of Lakeland provides data for any purpose, it is provided on an "as is" basis and the user assumes all responsibility for the use of the data. The user of this data is being provided as an "as is" basis for your information and only be subject to change without notice. While every reasonable effort has been made to ensure the accuracy of the data and data collection methods, the City of Lakeland makes no warranty, representation or guarantee as to the content, reliability, accuracy, timeliness, validity or completeness of any of the data provided. The user of these applications should not rely on the data provided herein for any reason. The City of Lakeland expressly disclaims any representation and warranties, express or implied, including without limitation, the implied warranties of merchantability and fitness for a particular purpose. In the event that the City of Lakeland provides data for any purpose, it is provided on an "as is" basis and the user assumes all responsibility for the use of the data.



The use of this data is being provided as an "as is" basis for your information and only be subject to change without notice. While every reasonable effort has been made to ensure the accuracy of the data and data collection methods, the City of Lakeland makes no warranty, representation or guarantee as to the content, reliability, accuracy, timeliness, validity or completeness of any of the data provided. The user of these applications should not rely on the data provided herein for any reason. The City of Lakeland expressly disclaims any representation and warranties, express or implied, including without limitation, the implied warranties of merchantability and fitness for a particular purpose. In the event that the City of Lakeland provides data for any purpose, it is provided on an "as is" basis and the user assumes all responsibility for the use of the data. The user of this data is being provided as an "as is" basis for your information and only be subject to change without notice. While every reasonable effort has been made to ensure the accuracy of the data and data collection methods, the City of Lakeland makes no warranty, representation or guarantee as to the content, reliability, accuracy, timeliness, validity or completeness of any of the data provided. The user of these applications should not rely on the data provided herein for any reason. The City of Lakeland expressly disclaims any representation and warranties, express or implied, including without limitation, the implied warranties of merchantability and fitness for a particular purpose. In the event that the City of Lakeland provides data for any purpose, it is provided on an "as is" basis and the user assumes all responsibility for the use of the data.



County Approved 60-lot Suburban Planned Development (SPD)



SITE DATA

PARCEL INFORMATION

PARCEL ID: 242827-243500-000134
 242827-243500-000160
 242827-000000-013003
 242827-000000-013021

FUTURE LAND USE: RS

DEVELOPMENT INFORMATION

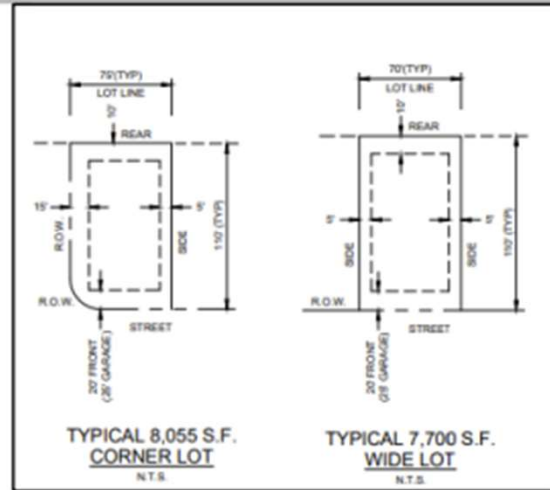
PROJECT AREA: ± 20.5 ACRES
 TOTAL UNITS: 60 UNITS
 PROJECT DENSITY: 3.0 DU/AC
 OPEN SPACE ACREAGE: 6.18 AC.
 OPEN SPACE PERCENTAGE: 30%

SETBACKS

FRONT: 20'
 GARAGE: 25'
 REAR: 10'
 SIDE: 5'
 STREETSIDE: 15'

UTILITY INFORMATION

WATER: CITY OF LAKELAND
 SEWER: CITY OF LAKELAND
 ELECTRIC: CITY OF LAKELAND



TYPICAL 8,055 S.F.
CORNER LOT
N.T.S.

TYPICAL 7,700 S.F.
WIDE LOT
N.T.S.

HATCH LEGEND	
	PROPOSED ASPHALT PAVEMENT AREA
	PROPOSED LOT AREA
	PROPOSED SIDEWALK
	PROPOSED OPEN SPACE

CONTACT INFORMATION

Tom Wodrich, Senior Associate

KW Commercial

Keller Williams Realty Smart

863-838-8511 (mobile)

863-577-1234 (office)

tomwodrich@kw.com

Se habla español

