

# QUAD PROFESSIONAL PLAZA

FOR LEASE

118 SW 330TH STREET, FEDERAL WAY, WA 98023



**BRIAN SHIN** 253.249.8011  
brian.shin@tspmanagement.net

**JEFF YOON** 253.220.7742  
jeff.yoon@tspmanagement.net

**OFFICE** 253.512.1000  
marketing@tspmanagement.net

The information contained herein has been given to us by sources that we deem reliable. We have no reason to doubt its accuracy, but we do not guarantee it. Prospective buyers/tenants should carefully verify all information

**TSPM**

FOR LEASE



Address

118 SW 330th St, Federal Way, WA 98023

Available Suite

100A, 102, 200, 205, 300

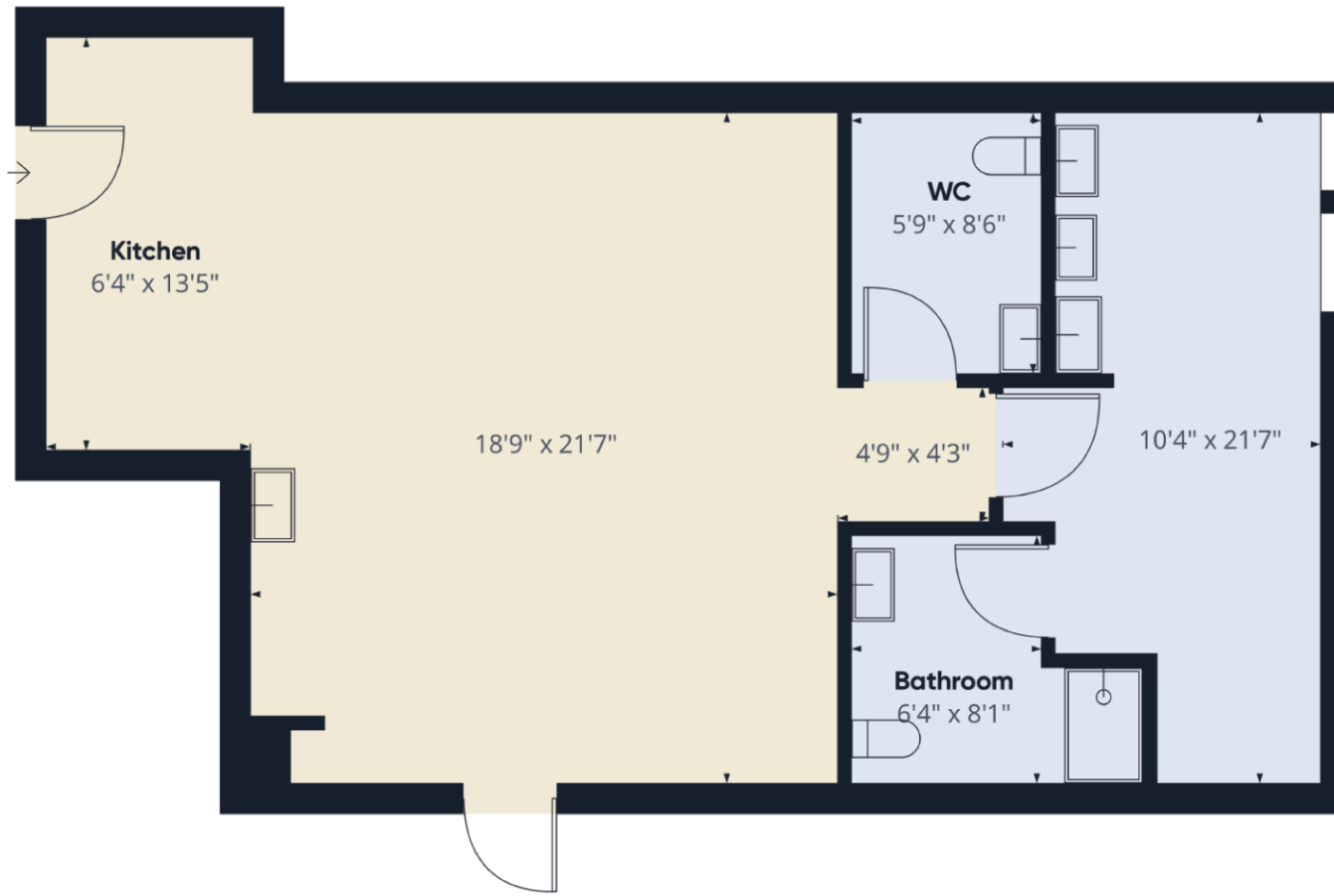
Available SF

938 SF, 878 SF, 2,683 SF, 803 SF, 1,393 SF

Lease Price

\$24 - \$26 SF \*Modified Gross

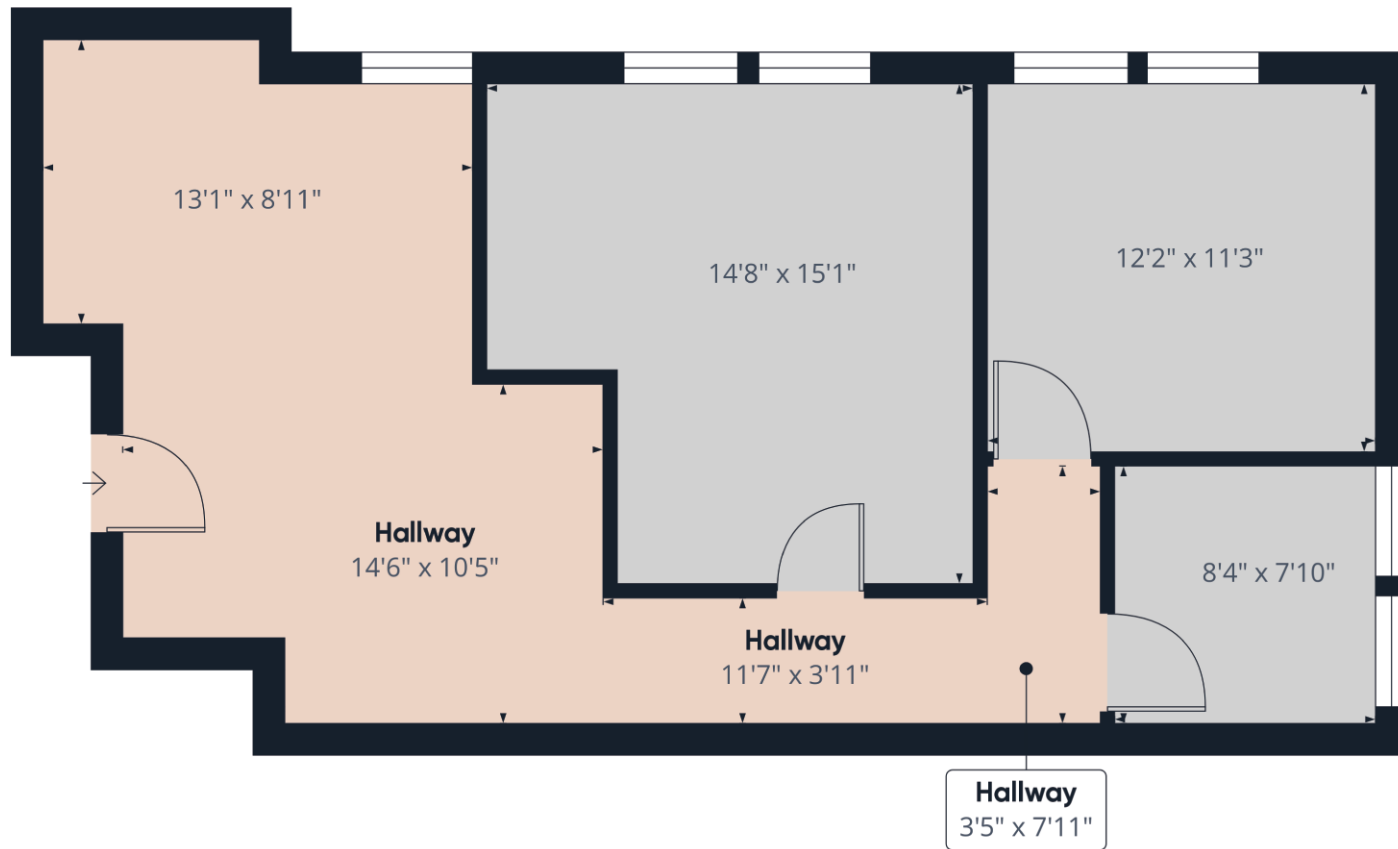
TSPM



[CLICK HERE FOR A VIRTUAL TOUR](#)

## SUITE 100A

This 938 SF suite, previously a dental lab, offers a versatile layout ideal for professional services. It includes a private bathroom for added convenience and is located in a well-established Federal Way building, making it perfect for small businesses or medical services.



[CLICK HERE FOR A VIRTUAL TOUR](#)

## SUITE 102

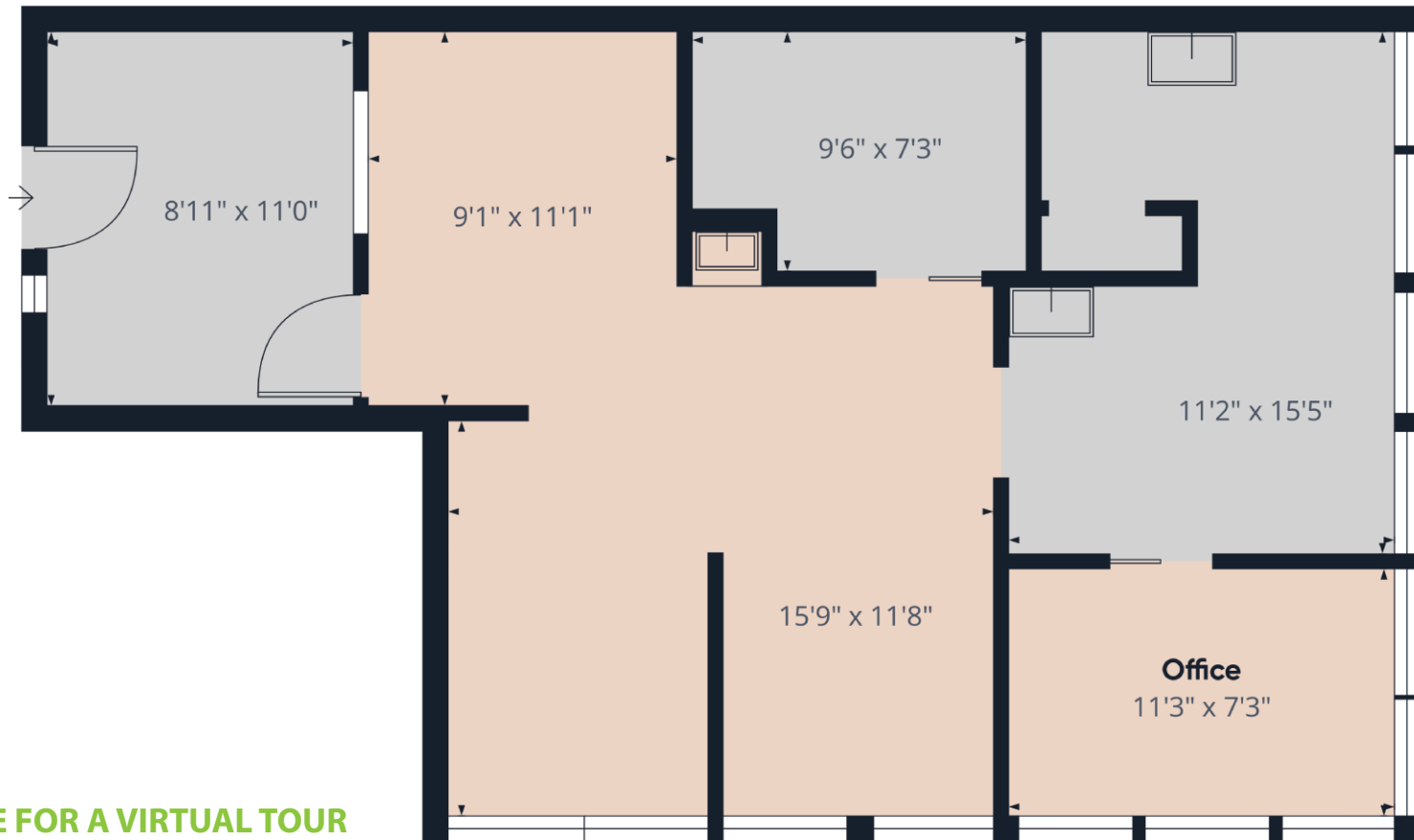
Formerly a CPA office, this 878 SF suite features a reception area, private offices, and an efficient layout. Tenants will share access to the building's common bathroom, offering an affordable option for professional services in a prime Federal Way location.



[CLICK HERE FOR A VIRTUAL TOUR](#)

## SUITE 200

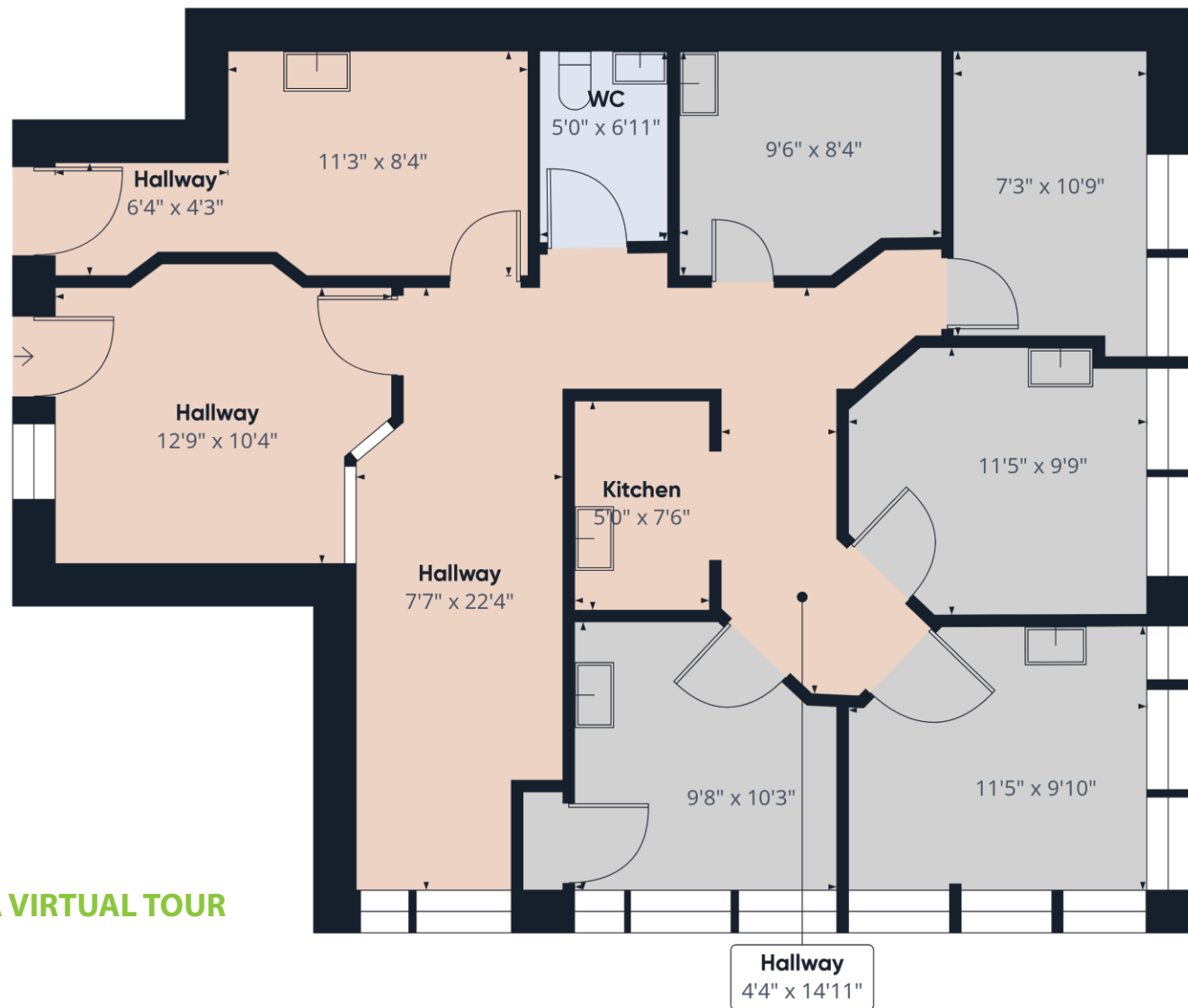
Suite 200 features 2,683 SF of space, formerly operated as a dental office. It comes with two private bathrooms and is well-suited for medical, dental, or office use. Situated in a professional building in Federal Way, this suite offers an established and professional setting for businesses.



[CLICK HERE FOR A VIRTUAL TOUR](#)

## SUITE 205

Suite 205 offers 803 SF of space, formerly used as a dental office. It is well-suited for medical, dental, or general office services, including startups seeking a welcoming environment. Located in a professional building in Federal Way, this suite is ideal for businesses looking for a well-established and professional setting.



[CLICK HERE FOR A VIRTUAL TOUR](#)

## SUITE 300

Suite 300 provides 1,393 SF of space, previously used as a dental office. It includes a private bathroom and is ideal for medical, dental, or office services. Located in a professional building in Federal Way, this suite is perfect for businesses seeking a well-established and professional environment.



**BRIAN SHIN** 253.249.8011  
brian.shin@tspmanagement.net

**JEFF YOON** 253.220.7742  
jeff.yoon@tspmanagement.net

**OFFICE** 253.512.1000  
marketing@tspmanagement.net

The information contained herein has been given to us by sources that we deem reliable. We have no reason to doubt its accuracy, but we do not guarantee it. Prospective buyers/tenants should carefully verify all information

