



## 3701 ATCHISON ST, RIVERBANK



Former gas stations with great visibility on highway 108  
Currently serving as a car wash with high traffic counts.

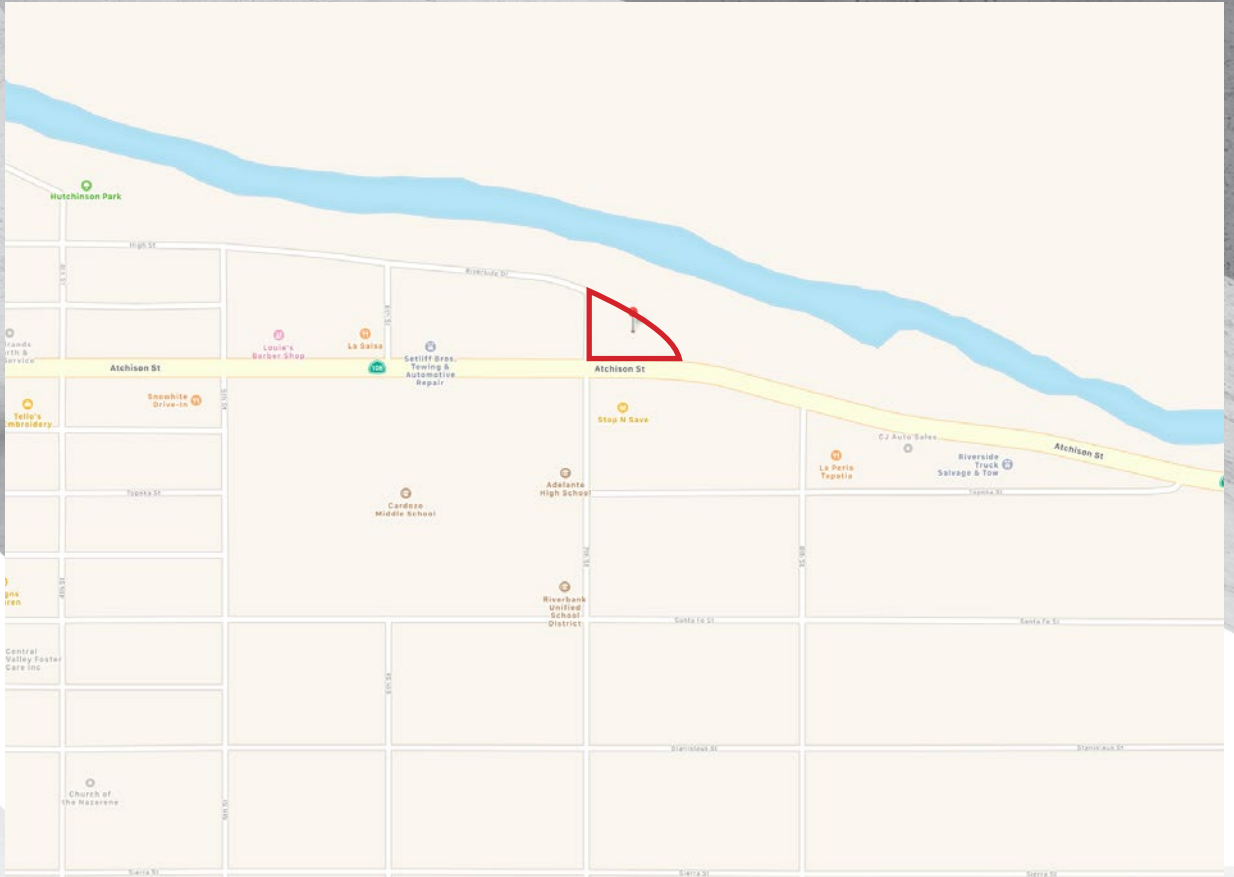
**PMZ COMMERCIAL**  
SINCE 1957 REAL ESTATE

# PROPERTY DESCRIPTION

Property is formerly the site of U-Gas and currently operates as a self serve car wash. It boasts great visibility on highway 108 and high traffic counts.

It is situated on the corner of Atchison Street (108) and 7th street in Riverbank.

<b>ADDRESS</b>	3701 Atchison St, Riverbank
<b>LOT SIZE</b>	29,400 SF
<b>LIST PRICE</b>	\$299,000
<b>COUNTY</b>	Stanislaus
<b>PROPERTY TYPE</b>	Retail, Vehicle Related



## FOR MORE INFORMATION, PLEASE CONTACT

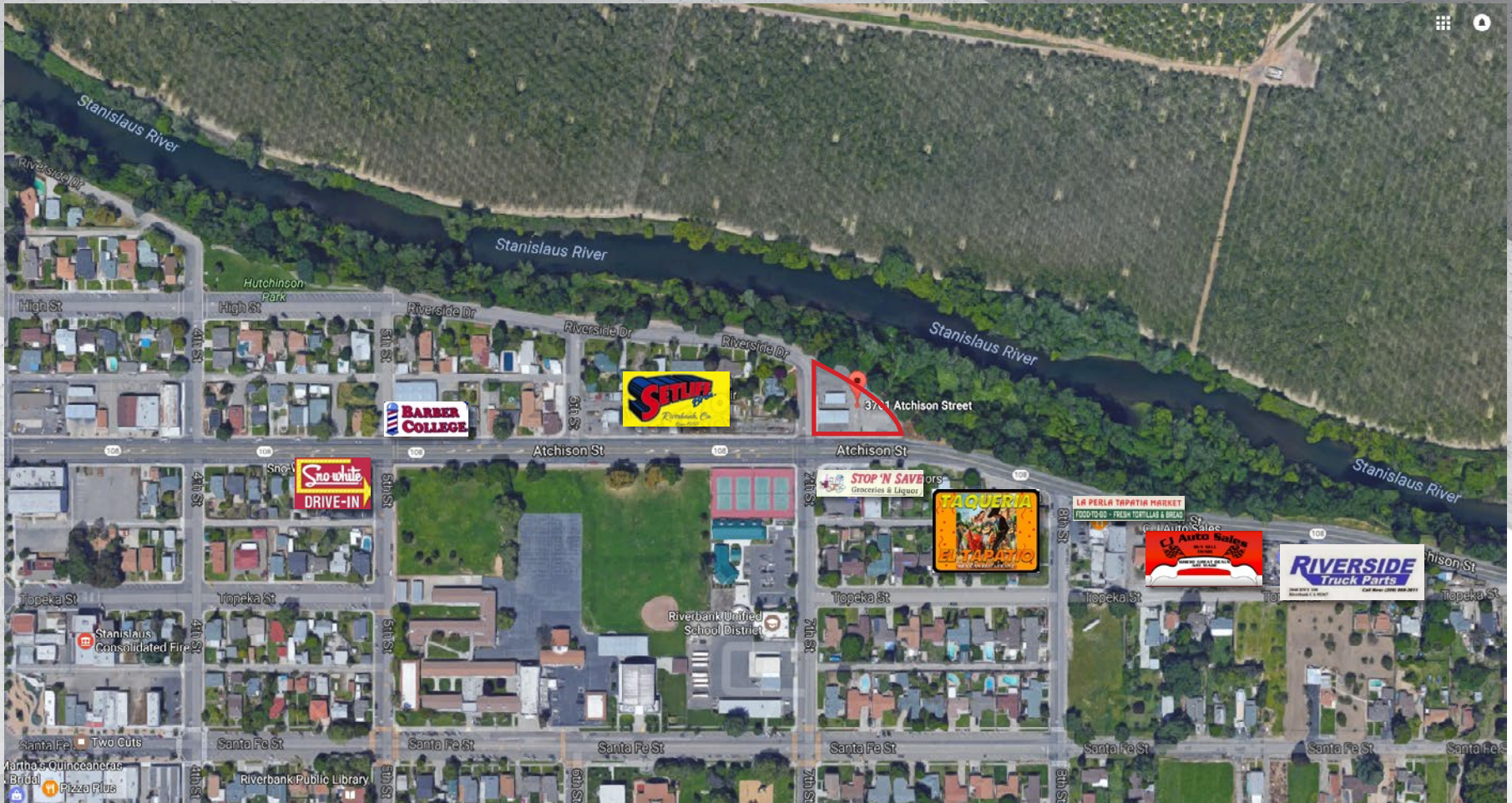


CARY POPE  
(209) 456-6297 | CPOPE@PMZ.COM  
CALBRE AGENT LIC. NO. 00685045

MATT JONES  
(209) 614-2571 | MJONES@PMZ.COM  
CALBRE AGENT LIC. NO.01973761

**PMZ COMMERCIAL**  
SINCE 1957 REAL ESTATE

# LOCAL BUSINESSES



FOR MORE INFORMATION, PLEASE CONTACT

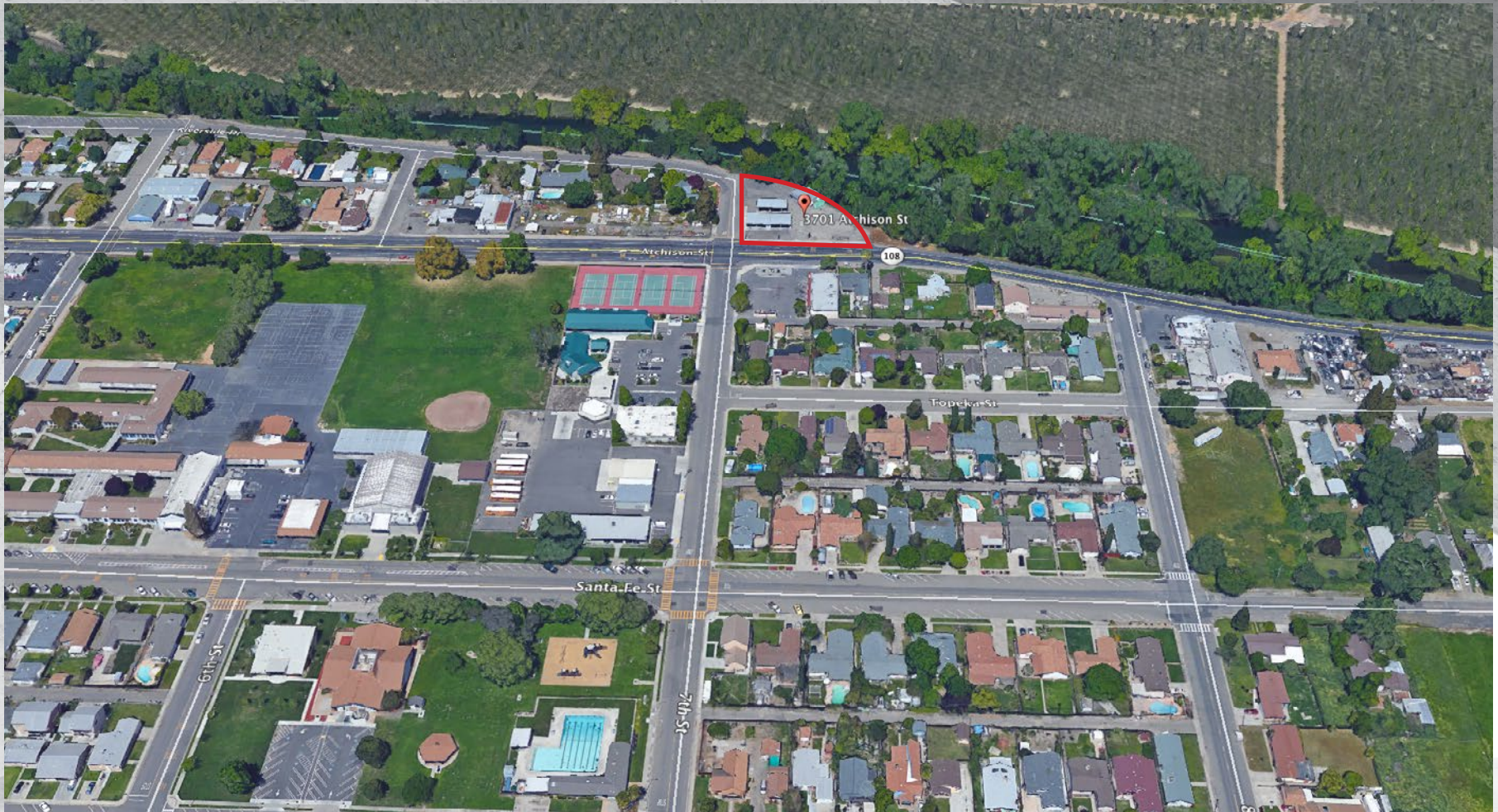


CARY POPE  
(209) 456-6297 | CPOPE@PMZ.COM  
CALBRE AGENT LIC. NO. 00685045

MATT JONES  
(209) 614-2571 | MJONES@PMZ.COM  
CALBRE AGENT LIC. NO. 01973761

**PMZ COMMERCIAL**  
SINCE 1957 REAL ESTATE

# AERIAL VIEW



FOR MORE INFORMATION, PLEASE CONTACT

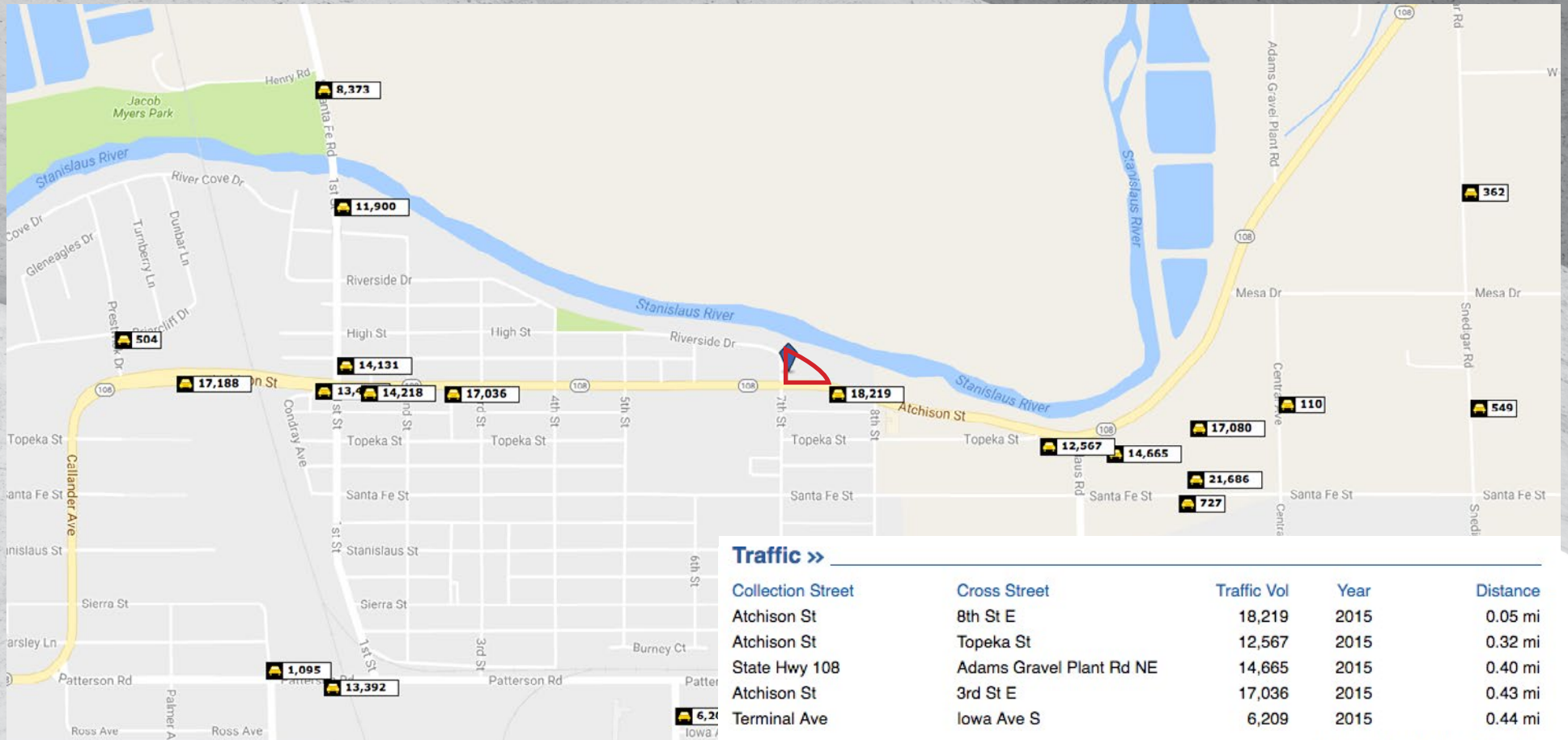


CARY POPE  
(209) 456-6297 | CPOPE@PMZ.COM  
CALBRE AGENT LIC. NO. 00685045

MATT JONES  
(209) 614-2571 | MJONES@PMZ.COM  
CALBRE AGENT LIC. NO. 01973761

**PMZ** COMMERCIAL  
SINCE 1957 REAL ESTATE

# TRAFFIC INFORMATION



## Traffic >>

Collection Street	Cross Street	Traffic Vol	Year	Distance
Atchison St	8th St E	18,219	2015	0.05 mi
Atchison St	Topeka St	12,567	2015	0.32 mi
State Hwy 108	Adams Gravel Plant Rd NE	14,665	2015	0.40 mi
Atchison St	3rd St E	17,036	2015	0.43 mi
Terminal Ave	Iowa Ave S	6,209	2015	0.44 mi

Made with TrafficMetrix® Products



## FOR MORE INFORMATION, PLEASE CONTACT

CARY POPE  
 (209) 456-6297 | CPOPE@PMZ.COM  
 CALBRE AGENT LIC. NO. 00685045

MATT JONES  
 (209) 614-2571 | MJONES@PMZ.COM  
 CALBRE AGENT LIC. NO.01973761

**PMZ COMMERCIAL**  
 SINCE 1957 REAL ESTATE