



COMMERCIAL

374 Whitney Avenue, New Haven, CT



For Lease: \$3700 Per Month + utilities

- 1,800 Sq. Ft.
- High Traffic Location
- Hood and walk-in cooler in place
- Additional basement storage included
- Long-time food-use location

John Wareck
Broker
(203) 645-1213
John@wareck.com

47 High Street
New Haven CT 06510
(203) 787-7800





COMMERCIAL

Property Information

Total Building SF	5,732 SF
Available SF	1,800 SF +/-
Year Built	1946
Ceiling Height	11 +/-
Water	City Water
Sewer	City Sewer
Sprinkler	No
Construction	Brick, Wood, & Steel
HVAC	Gas Powered Forced Air Heat & Cooling
Electric Service	Yes - 2 100 Amp Services
Gas	Yes - 2 Meters
# of Floors	Ground Floor Retail
Parking	None
Land Area	0.28 Acres
Bathrooms	1
Frontage	30' +/-
Zoning	RH1

374 Whitney Avenue, New Haven, CT 06511

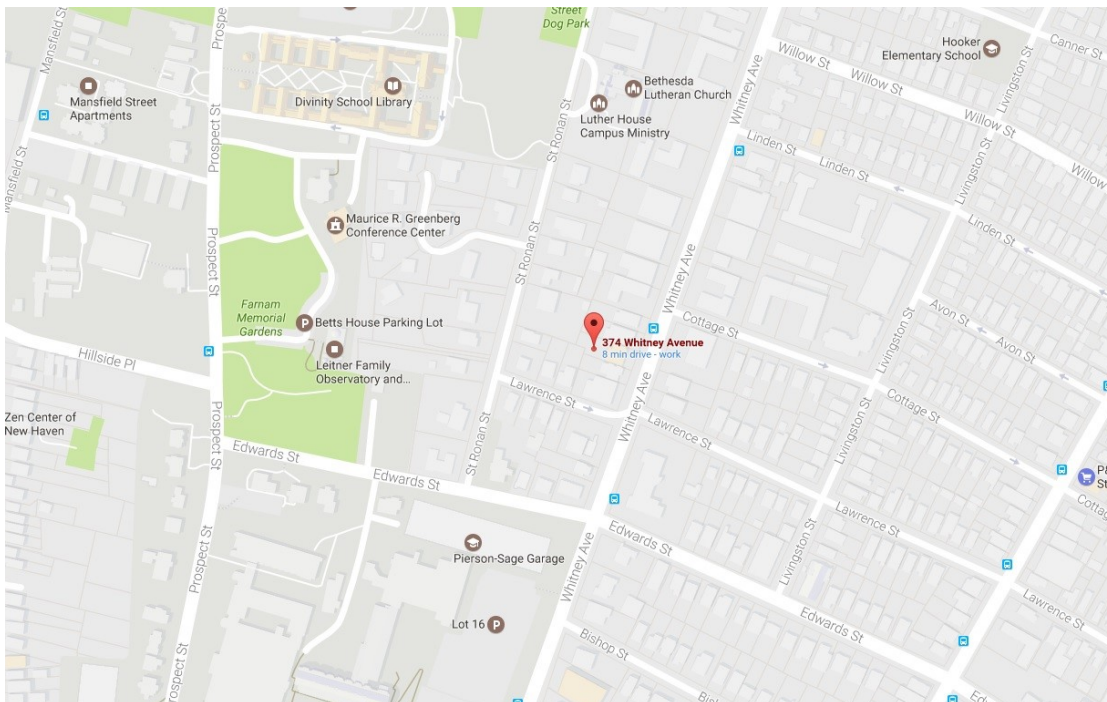
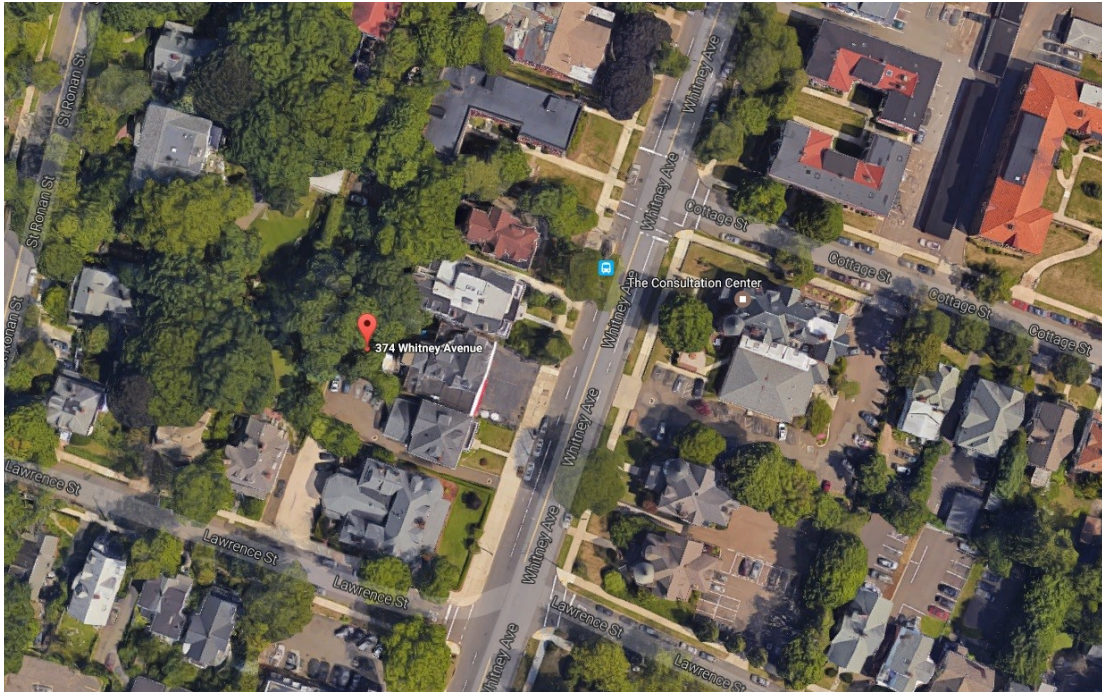
Comments: 1800 SF retail Space available in high traffic, high exposure, prime location in east rock. Just minutes away from Wooster Square, Yale University, downtown New Haven. Easy Access to I-91. Plenty of space for inside and outside seating. Space has been used by food/restaurant user for many decades.

Directions: From I-95; Lawrence St. to Whitney Ave.



COMMERCIAL

Aerial & Regional Map



Real Living Wareck D'Ostilio New Haven * Milford * Woodbridge

This information has been obtained from sources believed reliable. Real Estate broker has not verified it and makes no guarantee, warranty, or representation about it. All buyers and investors should conduct an independent and diligent investigation of the property before making investment decisions.