

FOR LEASE- Office Space

Hole Montes Building

950 Encore Way, Naples, FL 34110



OFFERING SUMMARY

Available SF:	2,523 SF
Lease Rate:	\$18.00 SF/yr (NNN)
Lot Size:	1.47 Acres
Year Built:	2000
Renovated:	2019
Building Size:	23,759 SF
Zoning:	PUD

PROPERTY OVERVIEW

Class "A" office building located just off US-41 in North Naples featuring high ceilings and doorways with floor to ceiling windows. The property location makes it convenient to both Naples and Bonita markets. The available suite features window offices, bull pen area, kitchenette and reception..

PROPERTY HIGHLIGHTS

- Class "A" office space - first-floor unit [Suite 102]
- Large private window offices
- Signage on the building and pylon sign
- High ceilings and doorways with floor to ceiling windows
- Located off US-41 in North Naples
- Renovated common areas

Todd Sabin
Managing Director
239.315.7015
todd.sabin@svn.com



The information presented here is deemed to be accurate, but it has not been independently verified. We make no guarantee, warranty or representation. It is your responsibility to independently confirm accuracy and completeness. All SVN® offices are independently owned and operated.

FOR LEASE- Office Space

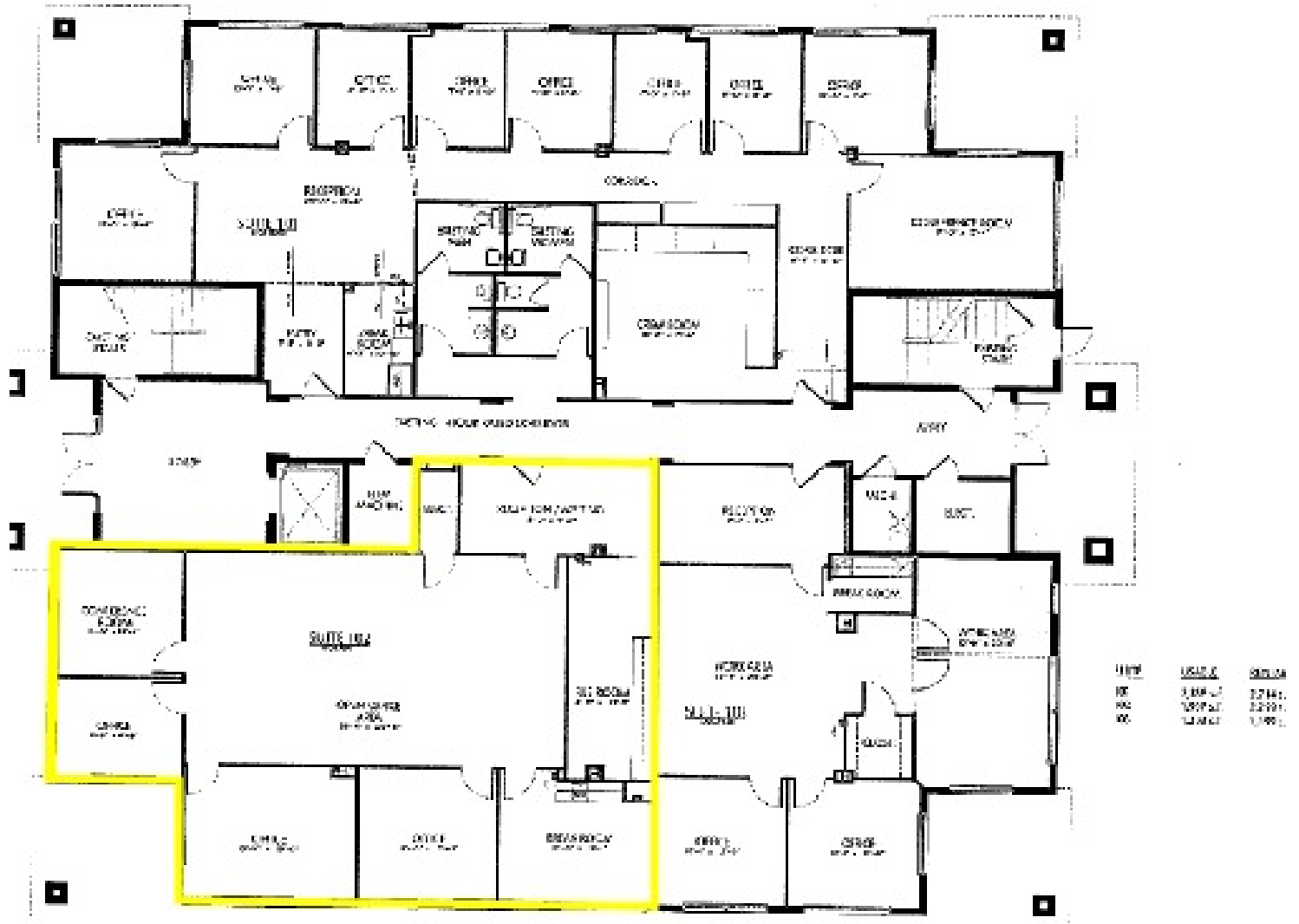


Todd Sabin
Managing Director
239.315.7015
todd.sabin@svn.com



The information presented here is deemed to be accurate, but it has not been independently verified. We make no guarantee, warranty or representation. It is your responsibility to independently confirm accuracy and completeness. All SVN® offices are independently owned and operated.

FOR LEASE- Office Space



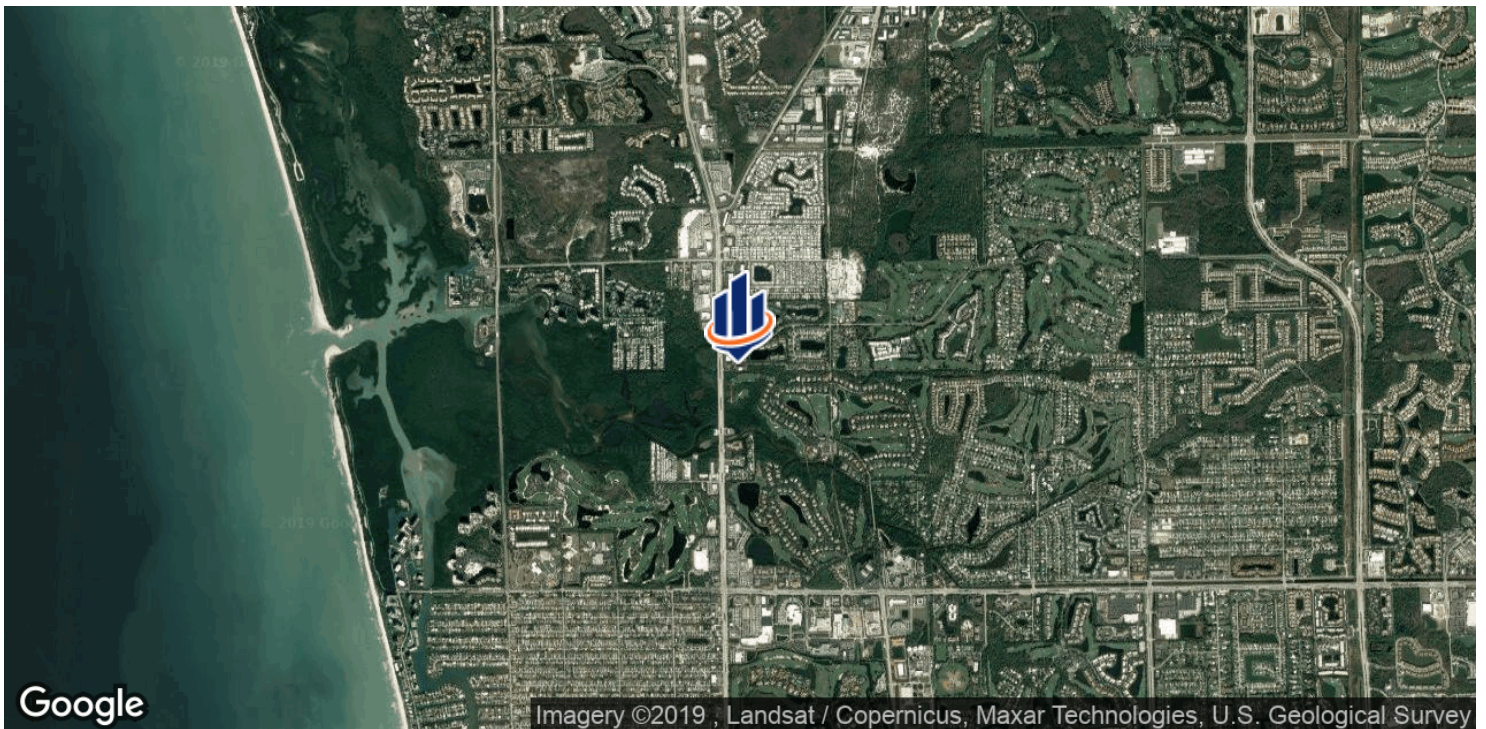
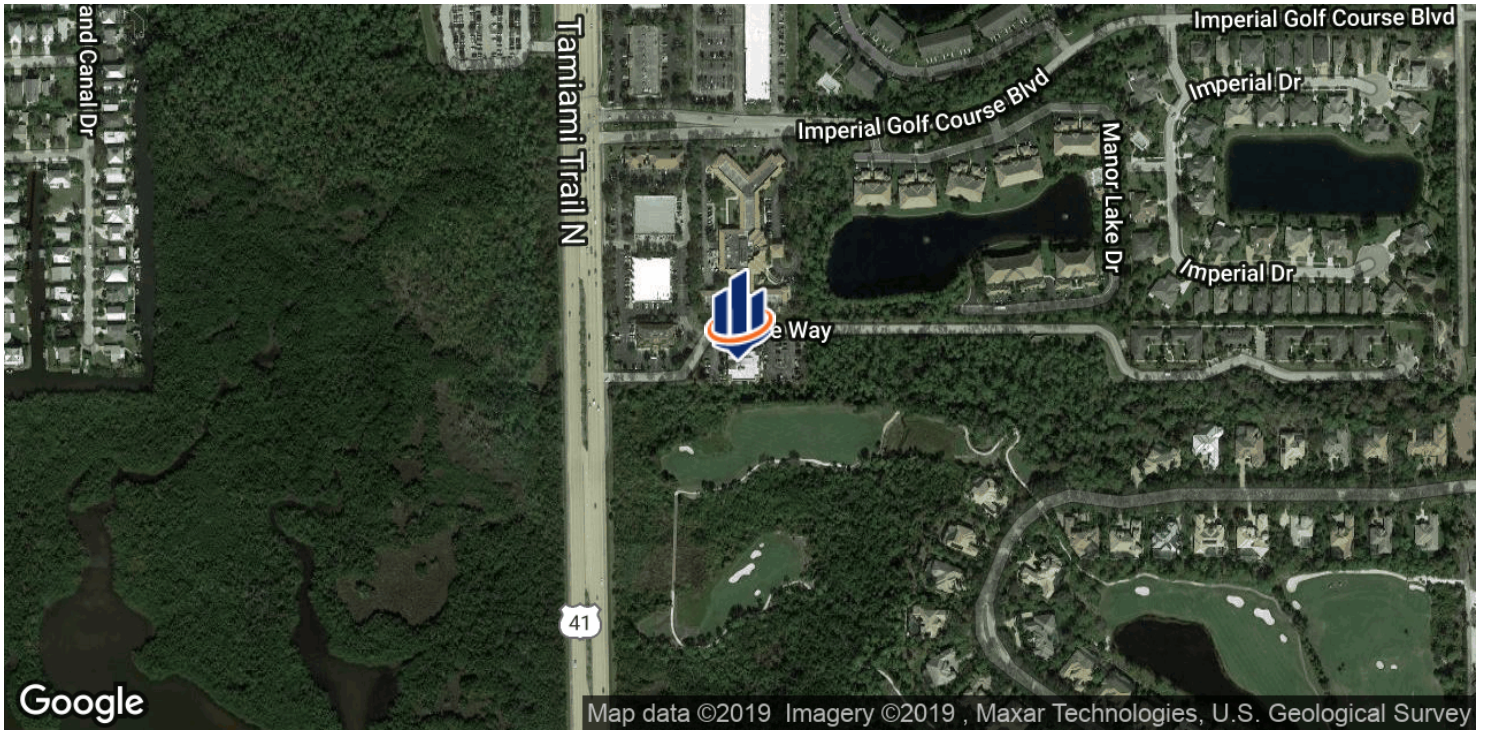
1 SUITE 102
2,523 SF

Todd Sabin
Managing Director
239.315.7015
todd.sabin@svn.com



The information presented here is deemed to be accurate, but it has not been independently verified. We make no guarantee, warranty or representation. It is your responsibility to independently confirm accuracy and completeness. All SVN® offices are independently owned and operated.

FOR LEASE- Office Space

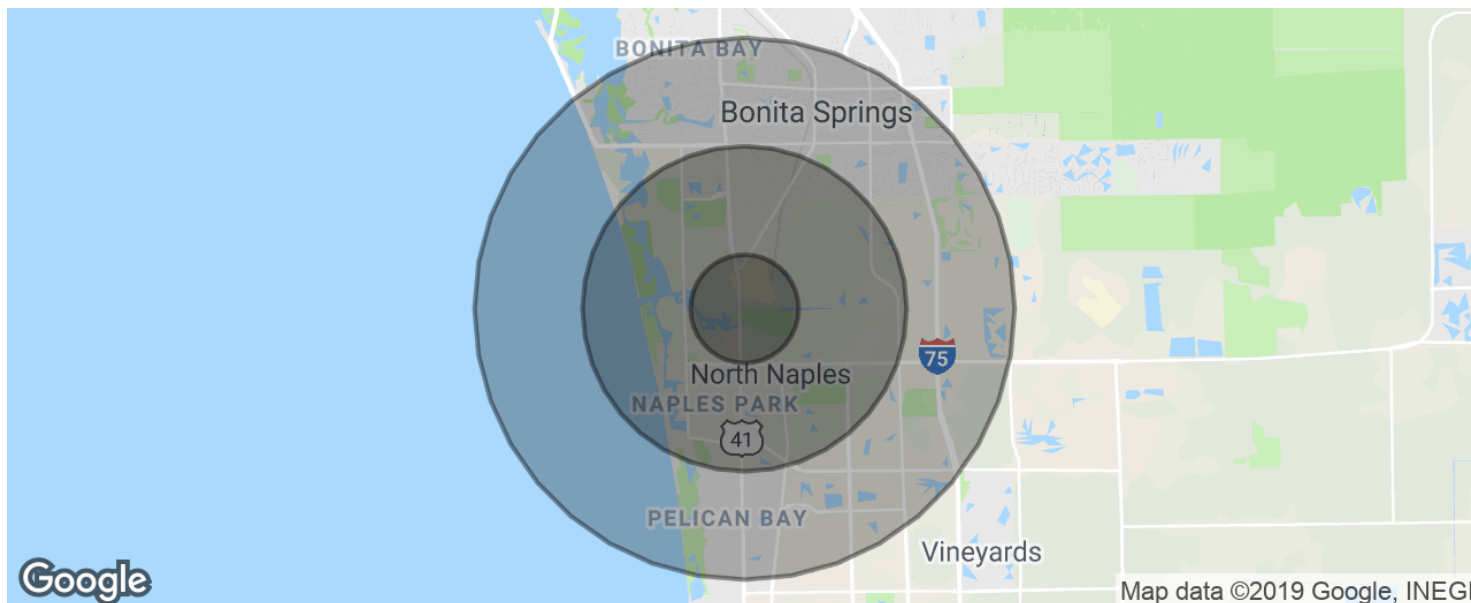


Todd Sabin
Managing Director
239.315.7015
todd.sabin@svn.com



The information presented here is deemed to be accurate, but it has not been independently verified. We make no guarantee, warranty or representation. It is your responsibility to independently confirm accuracy and completeness. All SVN® offices are independently owned and operated.

FOR LEASE- Office Space



POPULATION

	1 MILE	3 MILES	5 MILES
Total population	3,711	39,523	87,723
Median age	58.3	54.1	51.3
Median age (Male)	61.6	54.5	51.2
Median age (Female)	58.7	54.3	51.7

HOUSEHOLDS & INCOME

	1 MILE	3 MILES	5 MILES
Total households	1,638	17,274	37,937
# of persons per HH	2.3	2.3	2.3
Average HH income	\$106,524	\$105,609	\$106,532
Average house value	\$432,768	\$496,528	\$498,507

* Demographic data derived from 2010 US Census

Todd Sabin
 Managing Director
 239.315.7015
 todd.sabin@svn.com



The information presented here is deemed to be accurate, but it has not been independently verified. We make no guarantee, warranty or representation. It is your responsibility to independently confirm accuracy and completeness. All SVN® offices are independently owned and operated.