

FOR SALE

HIGHLAND DRIVE OFFICE CONDO

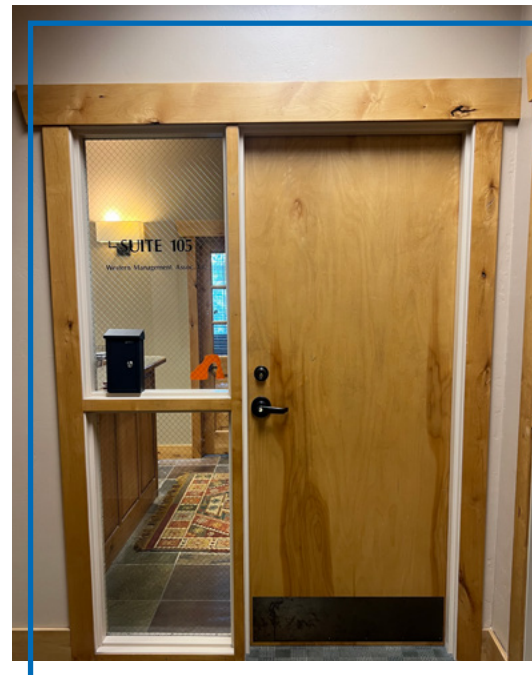


PROPERTY DETAILS

4252 South Highland Drive, Suite 105 Millcreek, UT 84124

ASKING PRICE: \$495,000

- 1,539 SF
- Available immediately
- Two covered secured parking stalls included (non-reserved)
- Furniture available for sale
- Year built 2002 / remodeled 2019
- CAM utilities \$899/month (everything but taxes)
- Property taxes: \$6,000 (2025)



NEWMARK

MOUNTAIN WEST

PETER BLACK

pblack@newmarkmw.com

direct 801.971.9425

[View Profile](#)

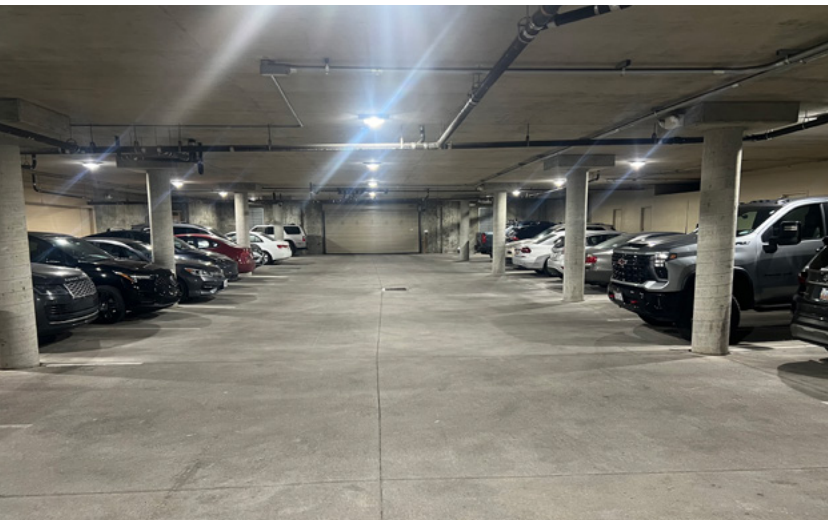
FULL SERVICE
COMMERCIAL REAL ESTATE

312 East South Temple

Salt Lake City, Utah 84111

Office 801.456.8800

www.newmarkmw.com



NEWMARK

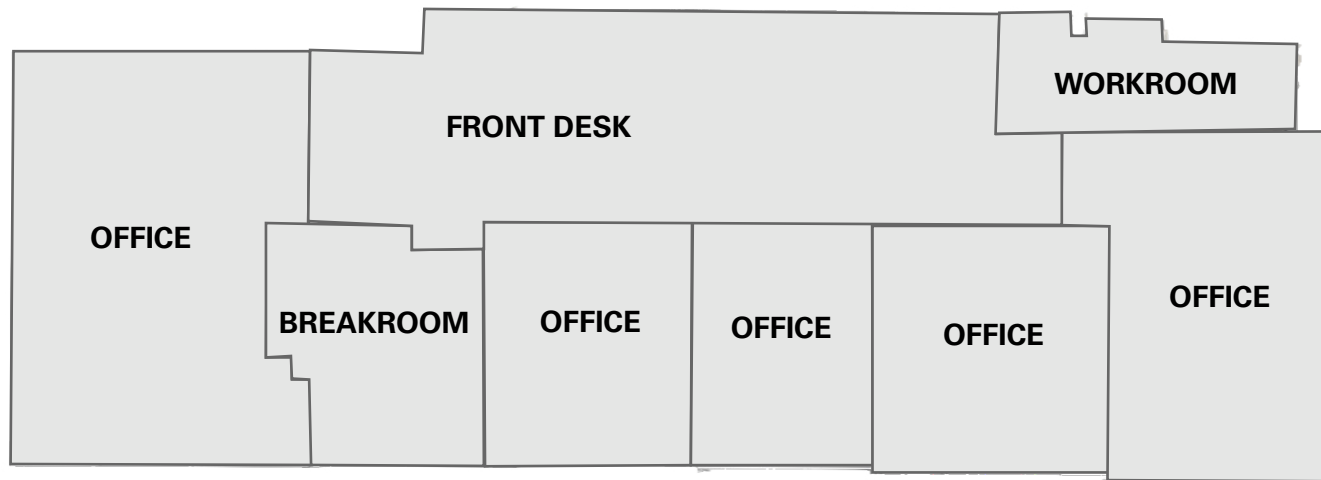
 MOUNTAIN WEST

PETER BLACK
pblack@newmarkmw.com
direct 801.971.9425
[View Profile](#)

**FULL SERVICE
COMMERCIAL REAL ESTATE**
312 East South Temple
Salt Lake City, Utah 84111
Office 801.456.8800
www.newmarkmw.com

SITE PLAN

HIGHLAND DRIVE OFFICE CONDO



NEWMARK

MOUNTAIN WEST

PETER BLACK

pblack@newmarkmw.com

direct 801.971.9425

[View Profile](#)

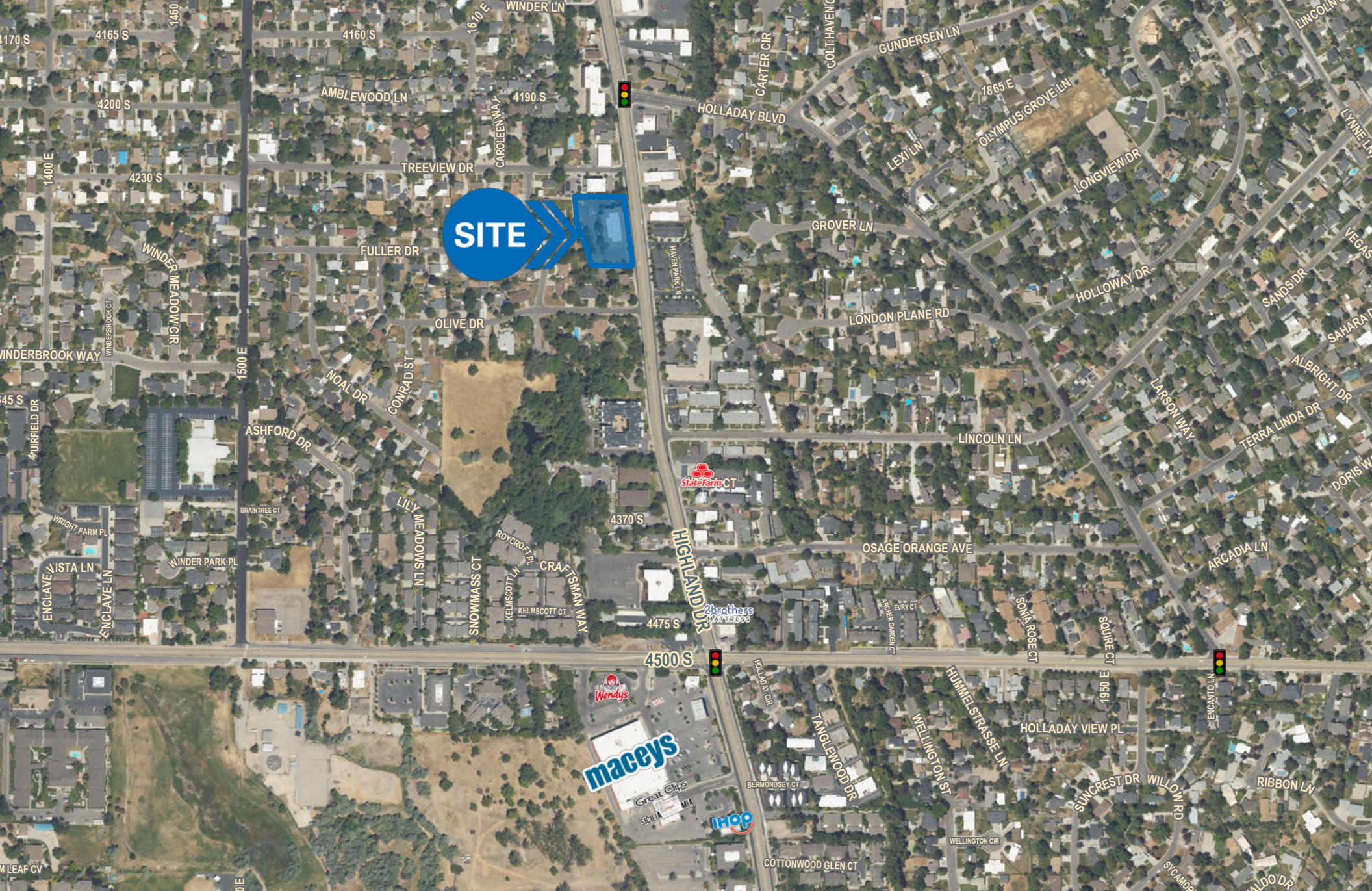
**FULL SERVICE
COMMERCIAL REAL ESTATE**

312 East South Temple

Salt Lake City, Utah 84111

Office 801.456.8800

www.newmarkmw.com

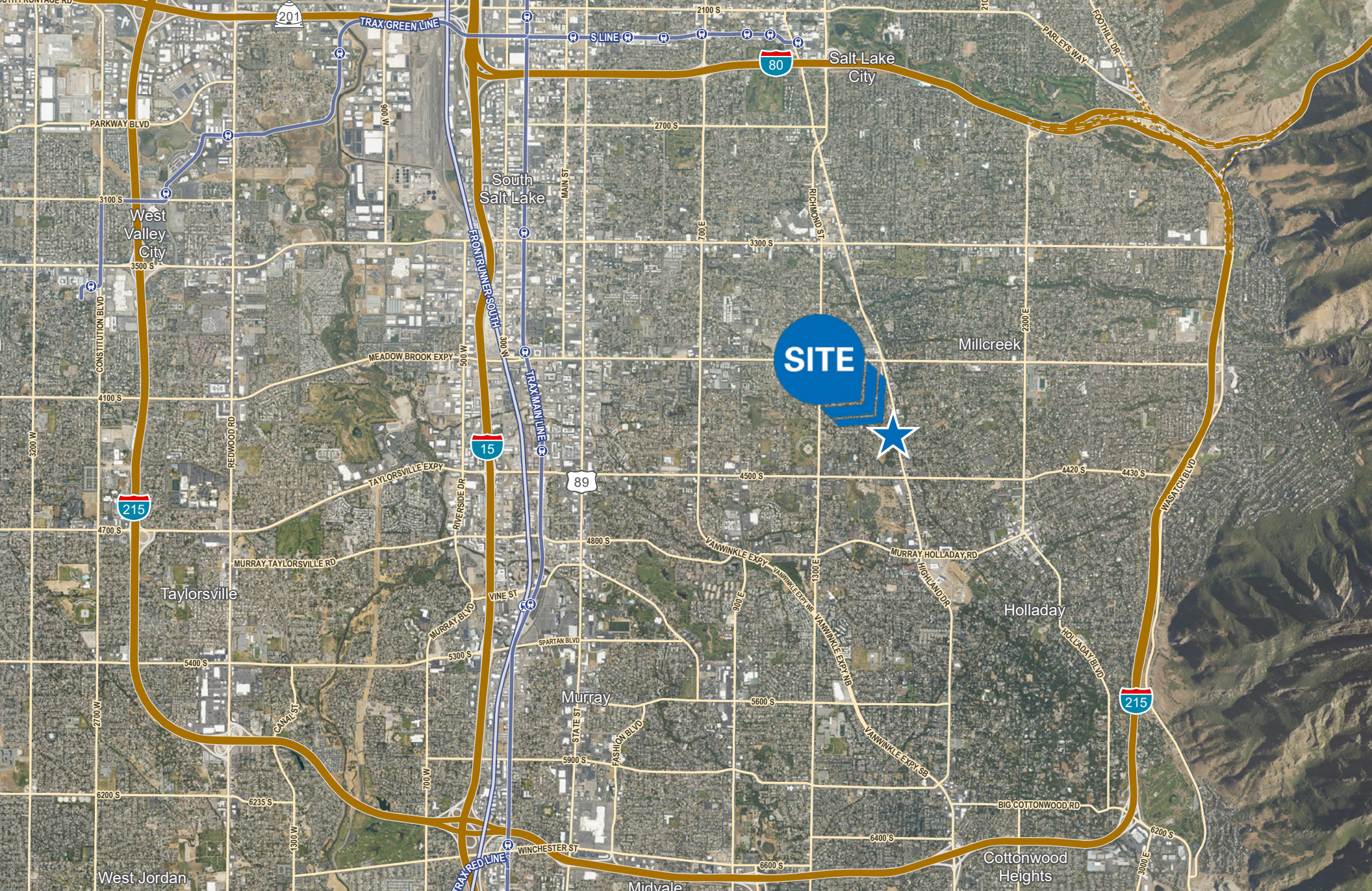


NEWMARK

MOUNTAIN WEST

PETER BLACK
pblack@newmarkmw.com
direct 801.971.9425
[View Profile](#)

**FULL SERVICE
COMMERCIAL REAL ESTATE**
312 East South Temple
Salt Lake City, Utah 84111
Office 801.456.8800
www.newmarkmw.com



NEWMARK

MOUNTAIN WEST

PETER BLACK
pblack@newmarkmw.com
direct 801.971.9425
[View Profile](#)

**FULL SERVICE
COMMERCIAL REAL ESTATE**
312 East South Temple
Salt Lake City, Utah 84111
Office 801.456.8800
www.newmarkmw.com