



FOR LEASE



OFFICE



490-8,000 SF

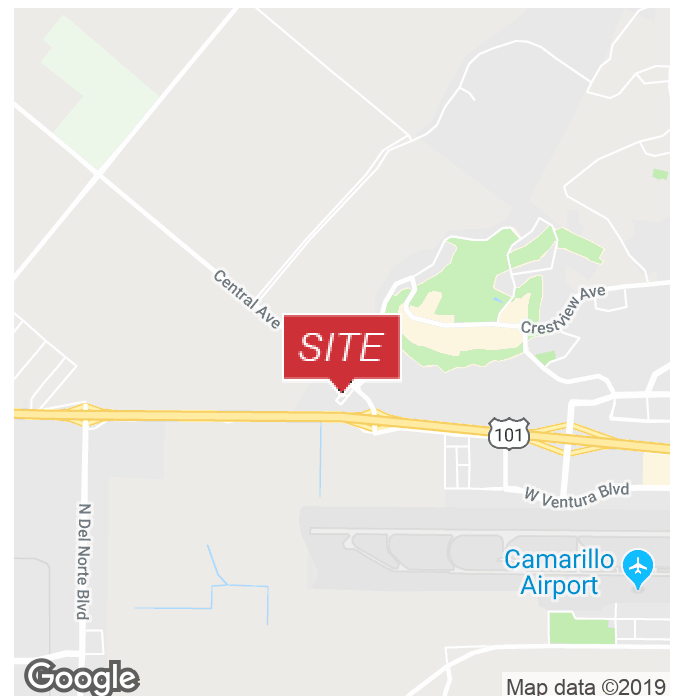


## 1317 Del Norte Road

Camarillo, California 93010

### Property Highlights

- New Ownership
- Two-story 16,864 SF Office Building
- \$1.55 per Square Foot, per Month, Modified Gross
- Upgrades / Quiet Setting
- Build to Suit / Spec Suites
- Private Offices / Open Areas
- Located by Prestigious Spanish Hills
- Easy Access to Ventura 101 Freeway
- Abundant Parking



www.naicapital.com

### Steve Doll

Senior Vice President | 805.288.5463  
sdoll@naicapital.com | CalDRE #01013707

NO WARRANTY, EXPRESS OR IMPLIED, IS MADE AS TO THE ACCURACY OF THE INFORMATION CONTAINED HEREIN. THIS INFORMATION IS SUBMITTED SUBJECT TO ERRORS, OMISSIONS, CHANGE OF PRICE, RENTAL OR OTHER CONDITIONS, WITHDRAWAL WITHOUT NOTICE, AND IS SUBJECT TO ANY SPECIAL LISTING CONDITIONS IMPOSED BY OUR PRINCIPALS. COOPERATING BROKERS, BUYERS, TENANTS AND OTHER PARTIES WHO RECEIVE THIS DOCUMENT SHOULD NOT RELY ON IT, BUT SHOULD USE IT AS A STARTING POINT OF ANALYSIS, AND SHOULD INDEPENDENTLY CONFIRM THE ACCURACY OF THE INFORMATION CONTAINED HEREIN THROUGH A DUE DILIGENCE REVIEW OF THE BOOKS, RECORDS, FILES AND DOCUMENTS THAT CONSTITUTE RELIABLE SOURCES OF THE INFORMATION DESCRIBED HEREIN. LOGOS ARE FOR IDENTIFICATION PURPOSES ONLY AND MAY BE TRADEMARKS OF THEIR RESPECTIVE COMPANIES. NAI CAPITAL, INC. CAL DRE LIC. #01980698.



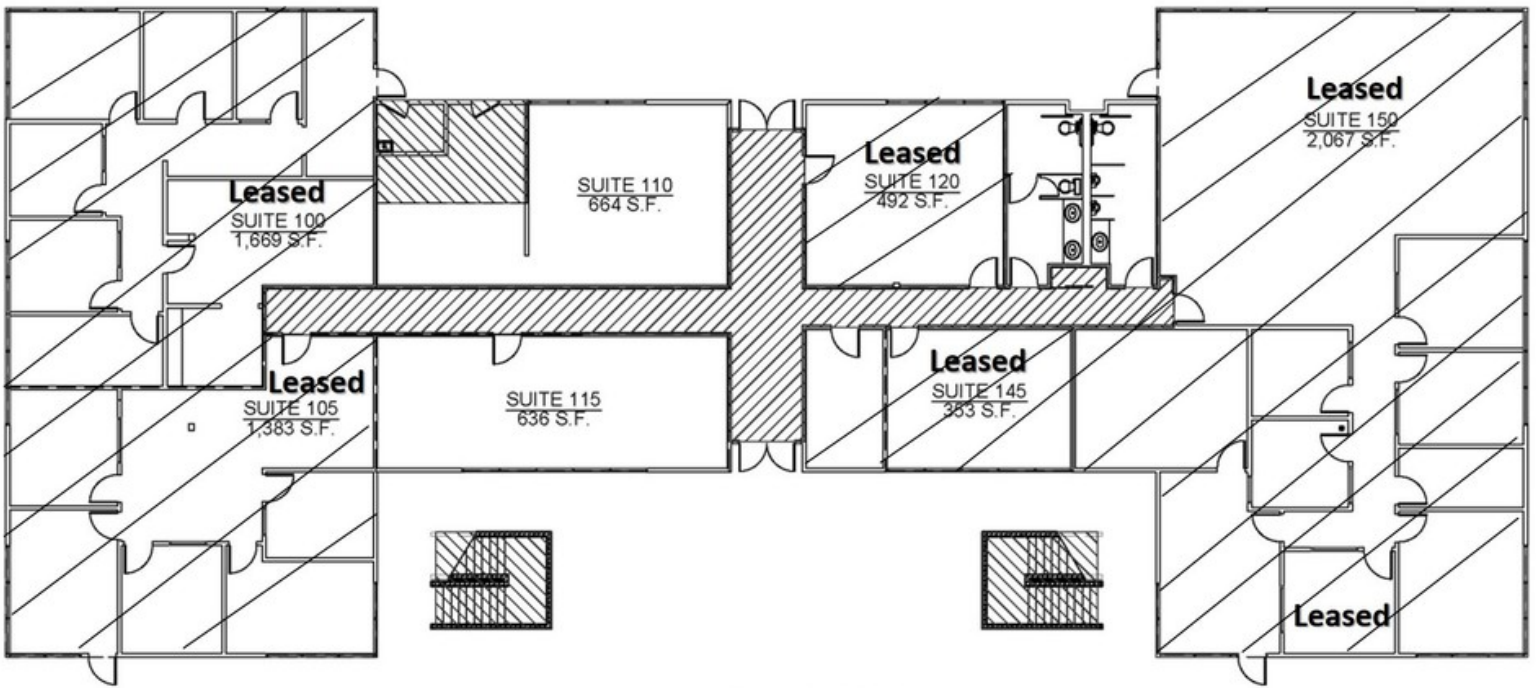
FOR LEASE



OFFICE



490-8,000 SF



FIRST FLOOR

**Steve Doll**

Senior Vice President | 805.288.5463  
sdoll@naicapital.com | CalDRE #01013707





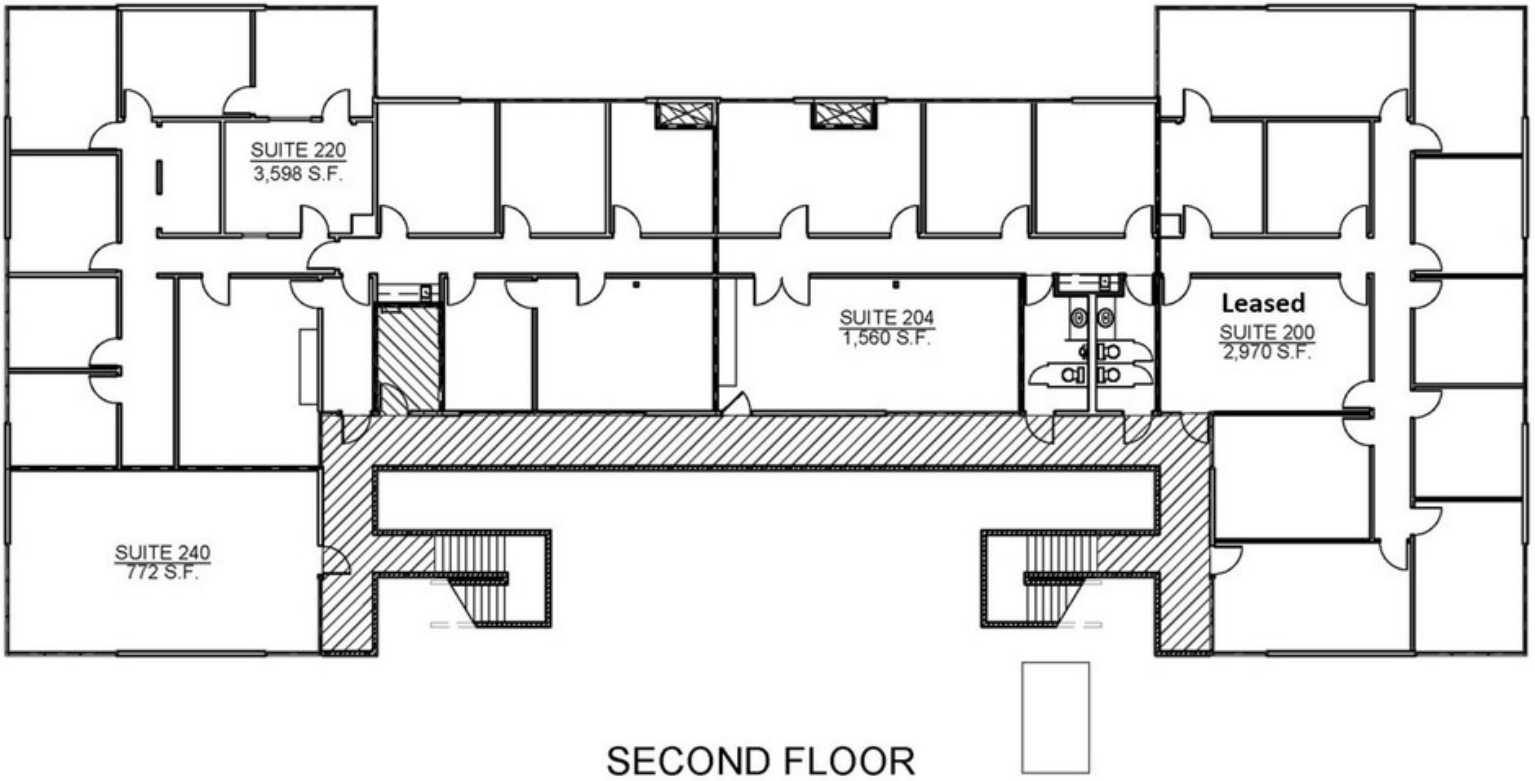
FOR LEASE



OFFICE



490-8,000 SF



**Steve Doll**  
Senior Vice President | 805.288.5463  
sdoll@naicapital.com | CalDRE #01013707