



INTERSTATE COMMERCE CENTER SOUTH Proposed Building A

I-20 and I-35E, Lancaster, TX 75134

34.96 acres

PROPOSED BUILDING: 617,760 SF

DIMENSIONS: 1188' x 520'

OFFICE AREA: Build-to-Suit

TRUCK COURT: 130'/185'

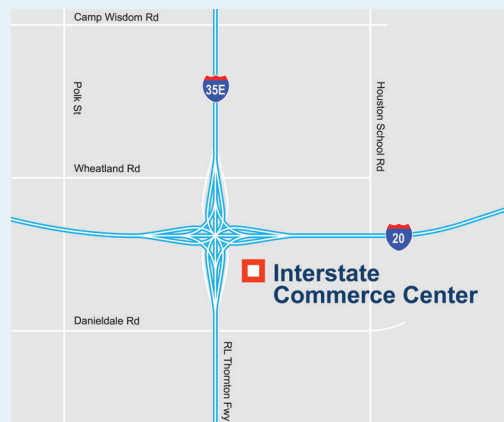
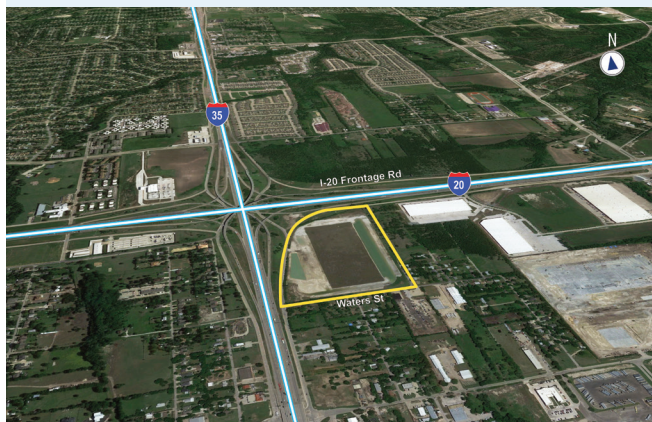
DOCK DOORS: 125

DRIVE-IN DOORS: 2 - 14' x 16'

TRAILER PARKING: 64 stalls (expandable)

COLUMN SPACING: 54' x 50'

STAGING BAY SIZE: 54' x 55'



Now Available - Class A Distribution Center Frontage on I-20 and I-35E

- White reflective roof membrane and concrete pavement that minimize “heat island effect”
- Water-effective landscaping that reduces water consumption
- Intelligent skylight design that enhances day lighting controls

CBRE

Krista Clark (Raymond)
+1.214.979.6501
krista.raymond@cbre.com

Nathan Lawrence
+1.214.979.6558
nathan.lawrence@cbre.com

Gaurav Sahay
+1.281.216.0051
gaurav.sahay@idilogistics.com

Jon Harmon
+1.972.560.7001
jon.harmon@idilogistics.com

IDI Logistics