

426
WEST 14TH STREET

MEATPACKING DISTRICT, NYC

YOUR
BRAND
HERE



WINICK RETAIL SPECIALISTS

426 WEST 14TH STREET

ADDRESS

426 West 14th Street, New York, NY 10014
Between Ninth Avenue and Washington Street

SIZE

Ground Floor Approx. 2,200 SF - 14' Ceilings
Lower Level Approx. 2,000 SF

FRONTAGE

Approx. 25' on West 14th Street

POSSESSION

Immediate

ASKING RENT

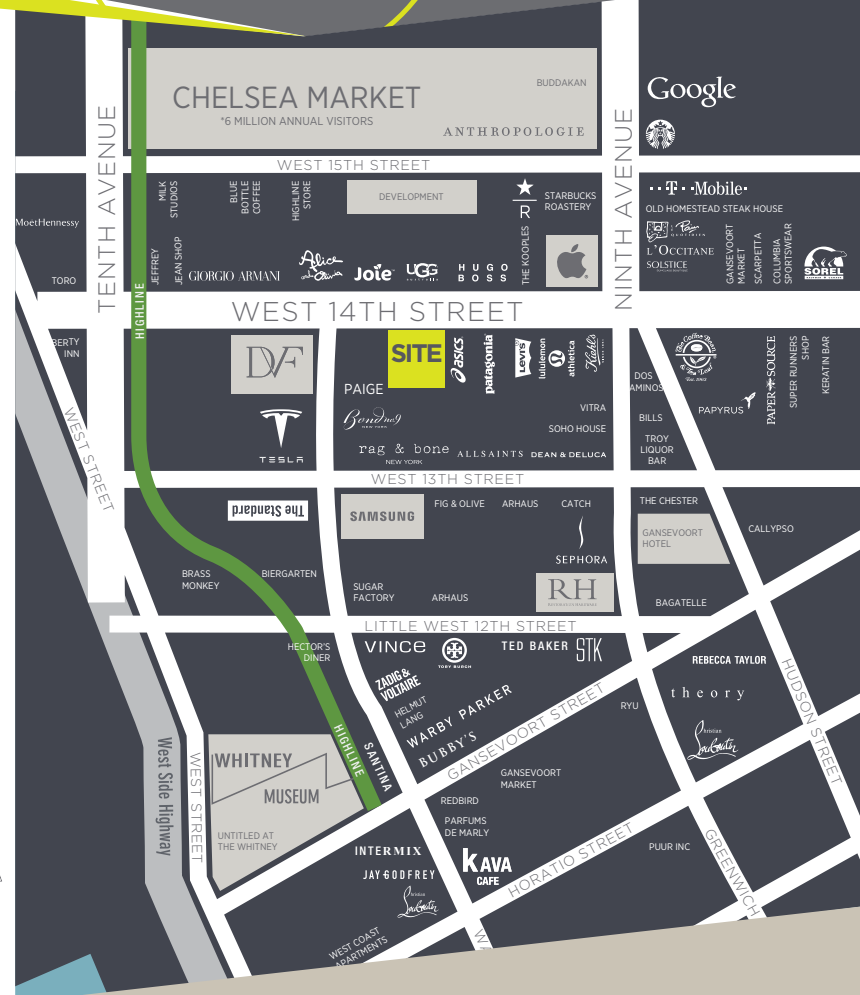
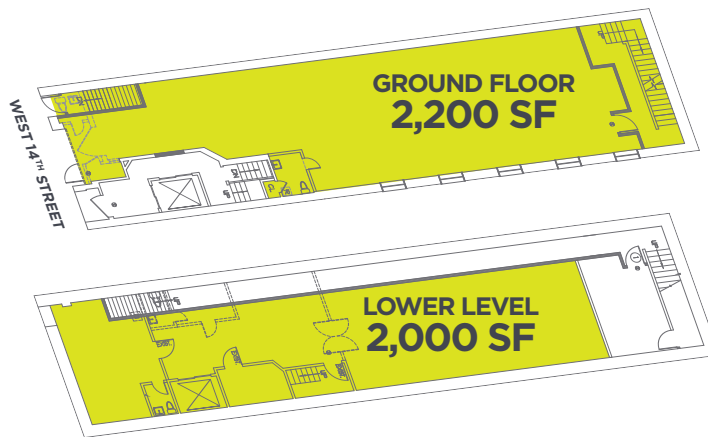
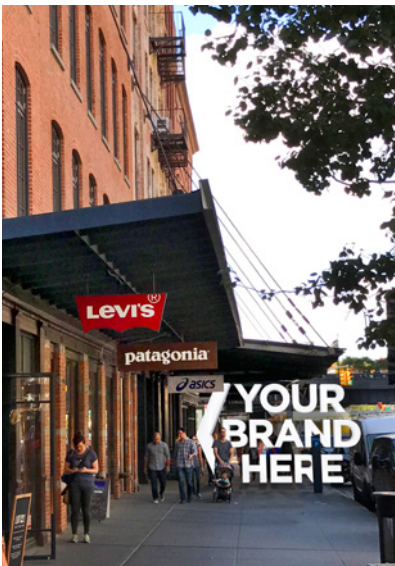
Upon Request

COMMENTS

- White-Boxed, Move-in Ready Retail in the Heart of the Meatpacking District
- Surrounded by high-end retail boutiques, award winning restaurants, luxury hotels, and office tenants such as Twitter, Moët Hennessy, and Google's regional headquarters
- Steps from Chelsea Market (+6.5 million annual visitors), The Highline (+5 million annual visitors), and The Whitney Museum of American Art

NEIGHBORS

Apple, Asics, Diane Von Furstenberg, The Kooples, Hugo Boss, Lululemon Athletica, Samsung, Patagonia, Theory, Tesla, Restoration Hardware Flagship Store, and Starbucks Roasting Plant.



For more information please contact exclusive agents:

JASON BERKLEY
212.792.2630
jberkley@winick.com

JEFF WINICK, CEO
212.792.2601
jeff@winick.com

WINICK RETAIL SPECIALISTS

Winick Realty Group LLC – Licensed Real Estate Brokers
655 Third Avenue, 8th Floor, New York, NY 10017
T 212 792 2600 | www.winick.com

ALTHOUGH ALL INFORMATION REGARDING PROPERTY FOR SALE, RENTAL OR FINANCING IS FROM SOURCES DEEMED RELIABLE SUCH INFORMATION HAS NOT BEEN VERIFIED, AND NO EXPRESS REPRESENTATION IS MADE NOR IS ANY TO BE IMPLIED AS TO THE ACCURACY THEREOF, AND IT IS SUBMITTED SUBJECT TO ERRORS, OMISSIONS, CHANGE OF PRICE, RENTAL OR OTHER CONDITIONS, PRIOR SALE, LEASE OR FINANCING, OR WITHDRAWAL WITHOUT NOTICE.