

**CUSHMAN &
WAKEFIELD**



STATELINE LOGISTICS CENTER

145 STEELE POINT DRIVE, FORT MILL, SC

±24,000 SF AVAILABLE

GID
INDUSTRIAL

FOR LEASE | 24,000 SF

Stateline Logistics Center

145 Steele Point Drive, Fort Mill, SC



Property Highlights

Building Size	104,000 SF	Column Spacing	50' x 50' with 60' speed bay
For Lease	24,000 SF	Bay Size	8,000 SF
Construction	Concrete Tilt	Building Depth	160'
Clear Height	24'	Car Parking	46 auto parks
Sprinkler	ESFR	Truck Parking	5 trailer parks
Office Area	5,088 SF	Dock High Doors	6
Lighting	LED	Drive-In Doors	1 (12'x14')
Power	1200 AMPS		

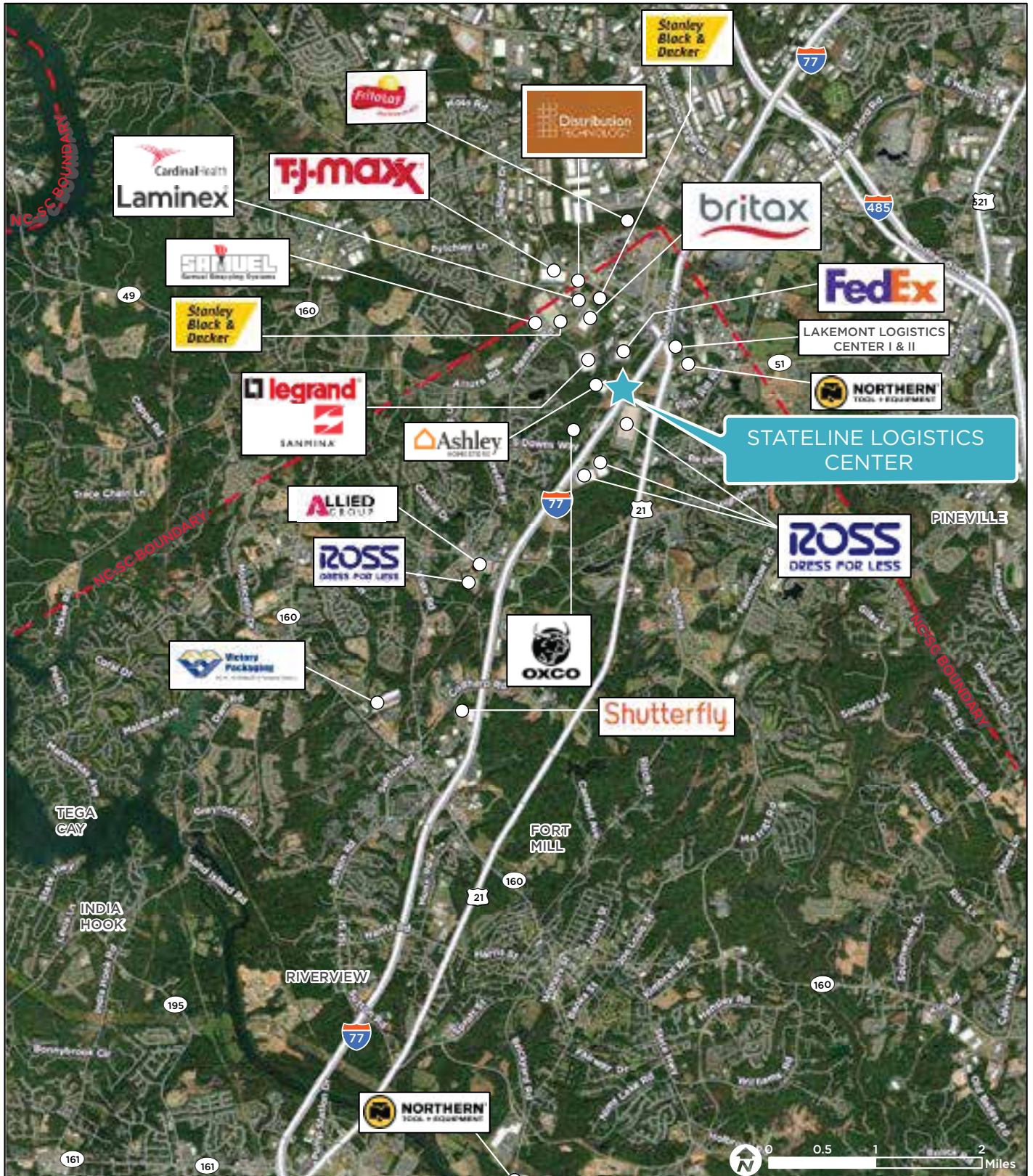
FOR LEASE | 24,000 SF

Stateline Logistics Center

145 Steele Point Drive, Fort Mill, SC



Aerial Map



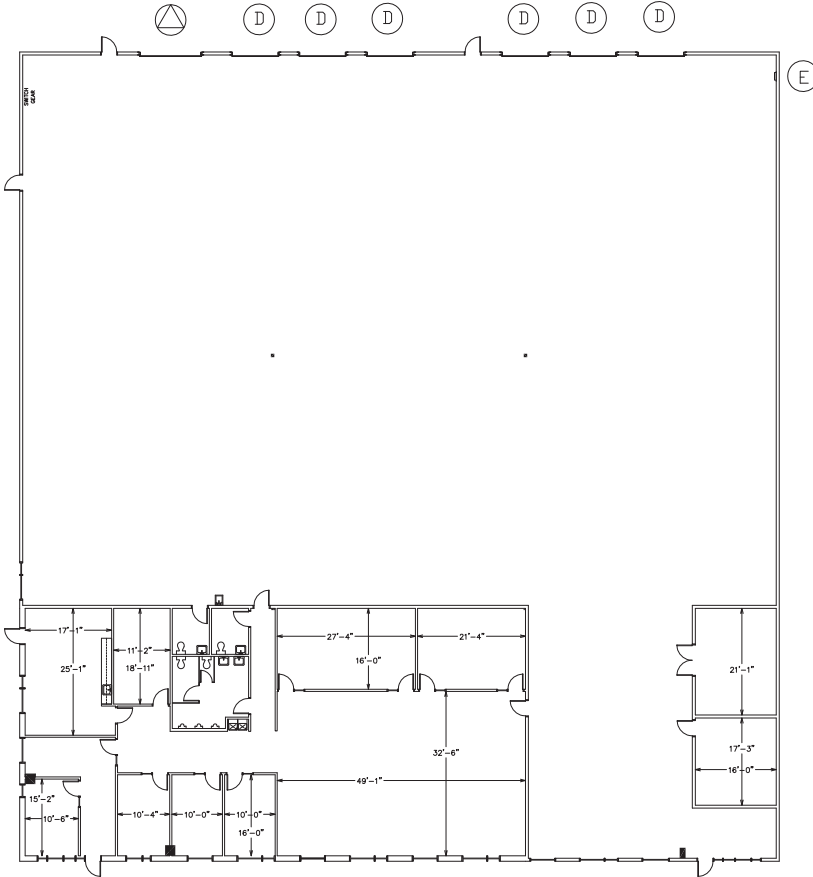
FOR LEASE | 24,000 SF

Stateline Logistics Center

145 Steele Point Drive, Fort Mill, SC



Floorplan



Office



Breakroom



Matt Treble

Executive Managing Director
+1 704 335 4430
matt.treble@cushwake.com

Fermin Deoca

Executive Managing Director
+1 704 335 4436
fermin.deoca@cushwake.com



©2024 Cushman & Wakefield. All rights reserved. The information contained in this communication is strictly confidential. This information has been obtained from sources believed to be reliable but has not been verified. NO WARRANTY OR REPRESENTATION, EXPRESS OR IMPLIED, IS MADE AS TO THE CONDITION OF THE PROPERTY (OR PROPERTIES) REFERENCED HEREIN OR AS TO THE ACCURACY OR COMPLETENESS OF THE INFORMATION CONTAINED HEREIN, AND SAME IS SUBMITTED SUBJECT TO ERRORS, OMISSIONS, CHANGE OF PRICE, RENTAL OR OTHER CONDITIONS, WITHDRAWAL WITHOUT NOTICE, AND TO ANY SPECIAL LISTING CONDITIONS IMPOSED BY THE PROPERTY OWNER(S). ANY PROJECTIONS, OPINIONS OR ESTIMATES ARE SUBJECT TO UNCERTAINTY AND DO NOT SIGNIFY CURRENT OR FUTURE PROPERTY PERFORMANCE.