

# MISSION PLAZA

1201 - 1225 TRUMAN STREET, SAN FERNANDO, 91340



## EXCLUSIVE LEASING AGENTS:



**TODD NATHANSON (818) 514-2204**  
todd@illicre.com, DRE #00923779

**ASHER PERGAMENT (818) 697-9371**  
asher@illicre.com, DRE #01922775

**SEAN MARTIN (818) 697-9383**  
sean@illicre.com, DRE #01068450

5990 Sepulveda Blvd., Ste. 600 - Sherman Oaks, CA 91411 - 818.501.2212 - [www.illicre.com](http://www.illicre.com) - DRE #01834124

This information has been secured from sources we believe to be reliable, but we make no representations or warranties, expressed or implied, as to the accuracy of the information. References to square footage are approximate. References to neighboring retailers are subject to change, and may not be adjacent to the vacancy being marketed either prior to, during, or after leases are signed. Lessee must verify the information and bears all risk for any inaccuracies.

# MISSION PLAZA

1201 - 1225 TRUMAN STREET, SAN FERNANDO, 91340

## PROPERTY FEATURES

- High profile strip center located at the NEC Truman Street / Maclay Avenue at the epicenter of San Fernando
- Great tenant mix with Starbucks, El Pollo Loco, IHOP, Menchie's, H&R Block, Western Dental, and more
- ±1,850 - 7,000 SF spaces available
- High sales volumes generated within the shopping center



## AREA AMENITIES

- Huge daytime population with approximately 11,500 workers in a 1 mile radius
- Very densely populated trade area

DEMOS	1 mile	3 mile	5 mile
Population	32,885	248,605	475,949
Avg. HH Income	\$60,880	\$74,184	\$79,864
Daytime Pop.	11,500	54,397	107,915
Traffic Count	±20,500 cars per day		



**TODD NATHANSON (818) 514-2204**  
todd@illicre.com, DRE #00923779

## EXCLUSIVE LEASING AGENTS:

**ASHER PERGAMENT (818) 697-9371**  
asher@illicre.com, DRE #01922775

**SEAN MARTIN (818) 697-9383**  
sean@illicre.com, DRE #01068450

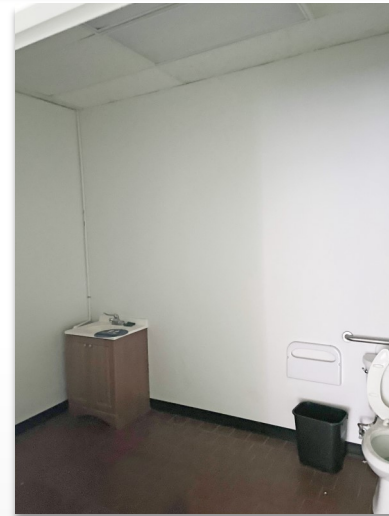
5990 Sepulveda Blvd., Ste. 600 - Sherman Oaks, CA 91411 - 818.501.2212 - www.illicre.com - DRE #01834124

This information has been secured from sources we believe to be reliable, but we make no representations or warranties, expressed or implied, as to the accuracy of the information. References to square footage are approximate. References to neighboring retailers are subject to change, and may not be adjacent to the vacancy being marketed either prior to, during, or after leases are signed. Lessee must verify the information and bears all risk for any inaccuracies.



# MISSION PLAZA

1201 - 1225 TRUMAN STREET, SAN FERNANDO, 91340



## EXCLUSIVE LEASING AGENTS:



**TODD NATHANSON (818) 514-2204**  
todd@illicre.com, DRE #00923779

**ASHER PERGAMENT (818) 697-9371**  
asher@illicre.com, DRE #01922775

**SEAN MARTIN (818) 697-9383**  
sean@illicre.com, DRE #01068450

5990 Sepulveda Blvd., Ste. 600 - Sherman Oaks, CA 91411 - 818.501.2212 - [www.illicre.com](http://www.illicre.com) - DRE #01834124

This information has been secured from sources we believe to be reliable, but we make no representations or warranties, expressed or implied, as to the accuracy of the information. References to square footage are approximate. References to neighboring retailers are subject to change, and may not be adjacent to the vacancy being marketed either prior to, during, or after leases are signed. Lessee must verify the information and bears all risk for any inaccuracies.

# MISSION PLAZA

1201 - 1225 TRUMAN STREET, SAN FERNANDO, 91340



## EXCLUSIVE LEASING AGENTS:

**TODD NATHANSON (818) 514-2204**  
todd@illicre.com, DRE #00923779

**ASHER PERGAMENT (818) 697-9371**  
asher@illicre.com, DRE #01922775

**SEAN MARTIN (818) 697-9383**  
sean@illicre.com, DRE #01068450

5990 Sepulveda Blvd., Ste. 600 - Sherman Oaks, CA 91411 - 818.501.2212 - [www.illicre.com](http://www.illicre.com) - DRE #01834124

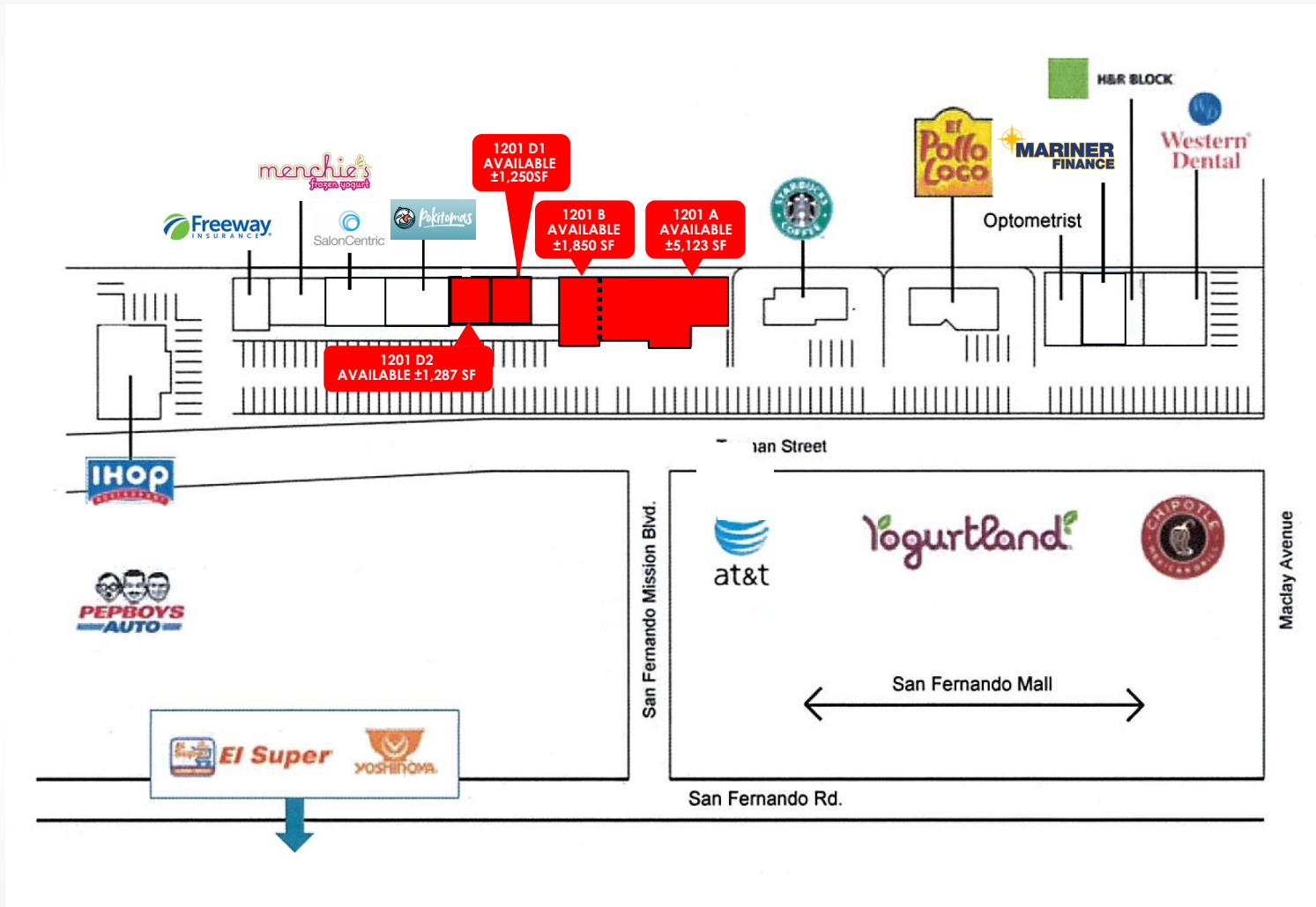
This information has been secured from sources we believe to be reliable, but we make no representations or warranties, expressed or implied, as to the accuracy of the information. References to square footage are approximate. References to neighboring retailers are subject to change, and may not be adjacent to the vacancy being marketed either prior to, during, or after leases are signed. Lessee must verify the information and bears all risk for any inaccuracies.



# MISSION PLAZA

1201 - 1225 TRUMAN STREET, SAN FERNANDO, 91340

## SITE PLAN



### EXCLUSIVE LEASING AGENTS:

**TODD NATHANSON (818) 514-2204**  
todd@illicre.com, DRE #00923779

**ASHER PERGAMENT (818) 697-9371**  
asher@illicre.com, DRE #01922775

**SEAN MARTIN (818) 697-9383**  
sean@illicre.com, DRE #01068450

5990 Sepulveda Blvd., Ste. 600 - Sherman Oaks, CA 91411 - 818.501.2212 - www.illicre.com - DRE #01834124

This information has been secured from sources we believe to be reliable, but we make no representations or warranties, expressed or implied, as to the accuracy of the information. References to square footage are approximate. References to neighboring retailers are subject to change, and may not be adjacent to the vacancy being marketed either prior to, during, or after leases are signed. Lessee must verify the information and bears all risk for any inaccuracies.



# MISSION PLAZA

1201 - 1225 TRUMAN STREET, SAN FERNANDO, 91340



## EXCLUSIVE LEASING AGENTS:

**TODD NATHANSON (818) 514-2204**  
todd@illicre.com, DRE #00923779

**ASHER PERGAMENT (818) 697-9371**  
asher@illicre.com, DRE #01922775

**SEAN MARTIN (818) 697-9383**  
sean@illicre.com, DRE #01068450

5990 Sepulveda Blvd., Ste. 600 - Sherman Oaks, CA 91411 - 818.501.2212 - www.illicre.com - DRE #01834124

This information has been secured from sources we believe to be reliable, but we make no representations or warranties, expressed or implied, as to the accuracy of the information. References to square footage are approximate. References to neighboring retailers are subject to change, and may not be adjacent to the vacancy being marketed either prior to, during, or after leases are signed. Lessee must verify the information and bears all risk for any inaccuracies.

