



COMMERCIAL & INVESTMENT DIVISION

For Lease

Office Space

CLASS "A" OFFICE SPACE



201 Commerce Drive | Maumelle, AR 72113

OFFERING SUMMARY

Available SF: 3,350 SF +/-

Lease Rate: \$14.00 SF/yr (MG)

Market: Maumelle

PROPERTY HIGHLIGHTS

- Class "A" office space
- Space includes 8 individual offices.
- Large conference room & kitchen/dining area (both areas shared with Landlord).
- Located on Commerce Drive just off Maumelle Blvd close to post office, restaurants, shopping and more.



Information is deemed reliable but is not guaranteed. Agency Disclosure: RPM Group is the agent for the owner of the property described herein.

File Num: 99-60-2263

MARK BINGMAN
(C)501.680.1707 | (O)501.916.8253
mbingman@rpmgroup.com

1501 N. University Avenue, Ste. 800
Little Rock, AR 72207
501.664.7807
www.rpmgroup.com





COMMERCIAL & INVESTMENT DIVISION

Property Photos

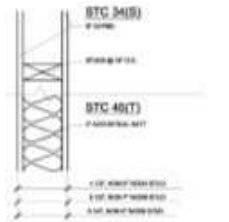


Information is deemed reliable but is not guaranteed. Agency Disclosure: RPM Group is the agent for the owner of the property described herein.

MARK BINGMAN
(C)501.680.1707 | (O)501.916.8253
mbingman@rpmgroup.com

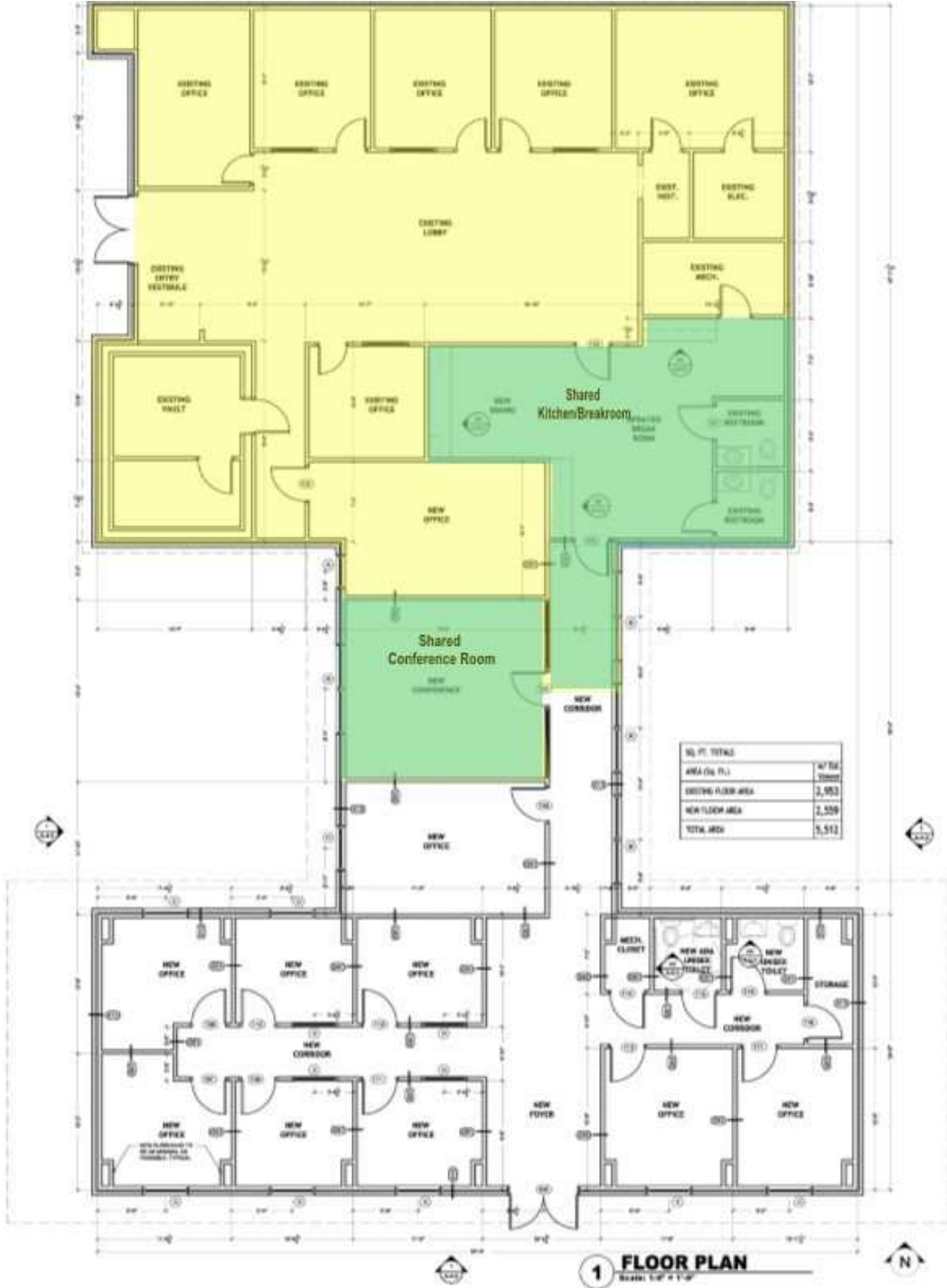
1501 N. University Avenue, Ste. 800
Little Rock, AR 72207
501.664.7807
www.rpmgroup.com





G51 PARTITION TYP.

- PARTITION NOTES, GENERAL**
PARTITION TYPE LEGEND:
EXAMPLE: 2-1-1
- 1. PARTITION TYPE
 - 2. PARTITION TYPE
 - 3. PARTITION TYPE
- GENERAL CONSTRUCTION AND FINISHES:**
- 1. PARTITION TYPE
 - 2. PARTITION TYPE
 - 3. PARTITION TYPE
- GENERAL FINISHES:**
- 1. PARTITION TYPE
 - 2. PARTITION TYPE
 - 3. PARTITION TYPE



NATHAN ALDERSON ARCHITECT
ARCHITECTS
1001 N. UNIVERSITY AVENUE, STE. 800
LITTLE ROCK, AR 72207
TEL: 501.664.7807



PROJECT NUMBER: _____

**NEW ADDITION TO:
201 COMMERCE DR.
MAUMELLE, AR**

FLOOR PLAN

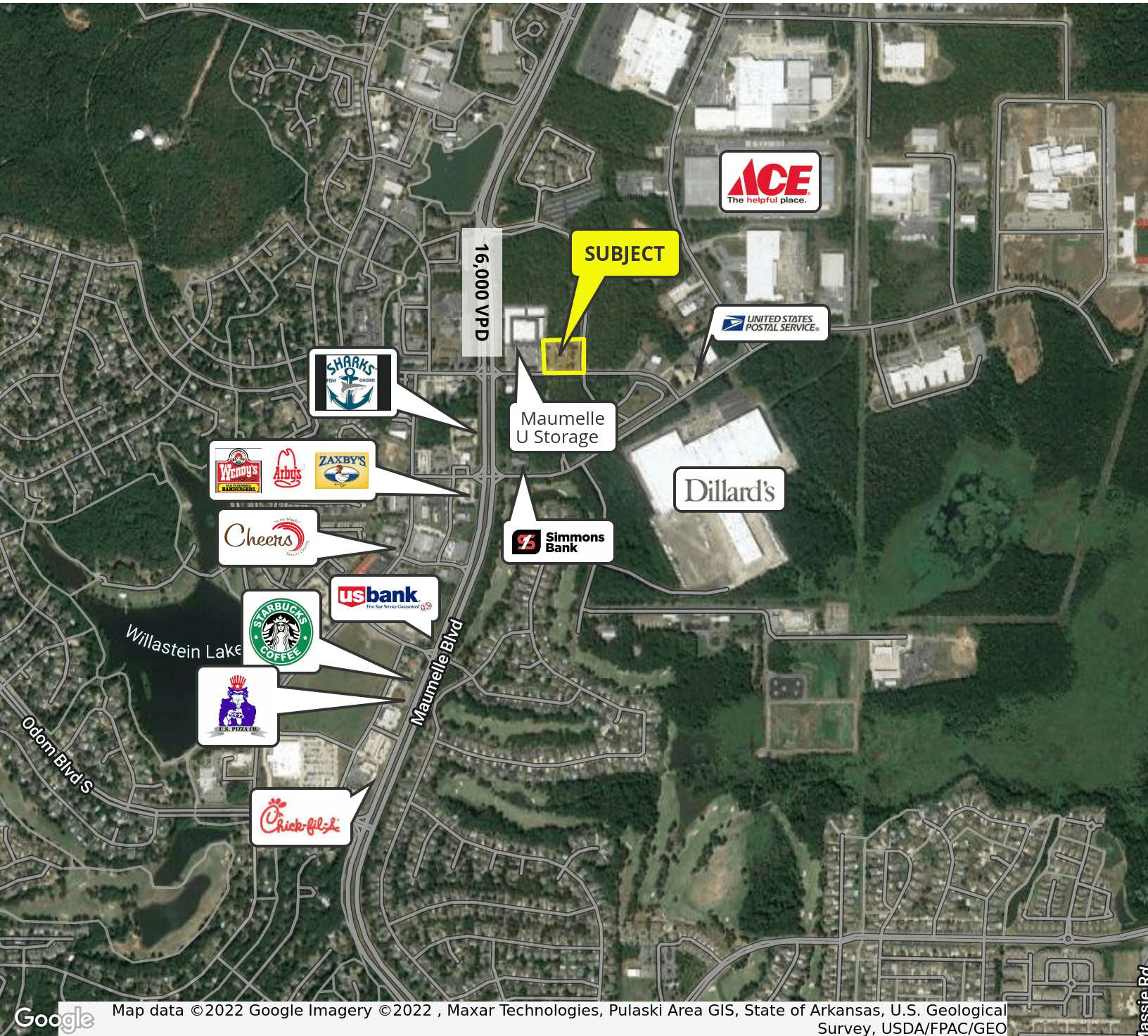
FOR CONSTRUCTION
Proj No: AR20125
04-19-21
A-1.1

Information is deemed reliable but is not guaranteed. Agency Disclosure: RPM Group is the agent for the owner of the property described herein.

MARK BINGMAN
(C)501.680.1707 | (O)501.916.8253
mbingman@rpmgroup.com

1501 N. University Avenue, Ste. 800
Little Rock, AR 72207
501.664.7807
www.rpmgroup.com





Map data ©2022 Google Imagery ©2022, Maxar Technologies, Pulaski Area GIS, State of Arkansas, U.S. Geological Survey, USDA/FPAC/GEO

Information is deemed reliable but is not guaranteed. Agency Disclosure: RPM Group is the agent for the owner of the property described herein.

MARK BINGMAN
 (C)501.680.1707 | (O)501.916.8253
 mbingman@rpmgroup.com

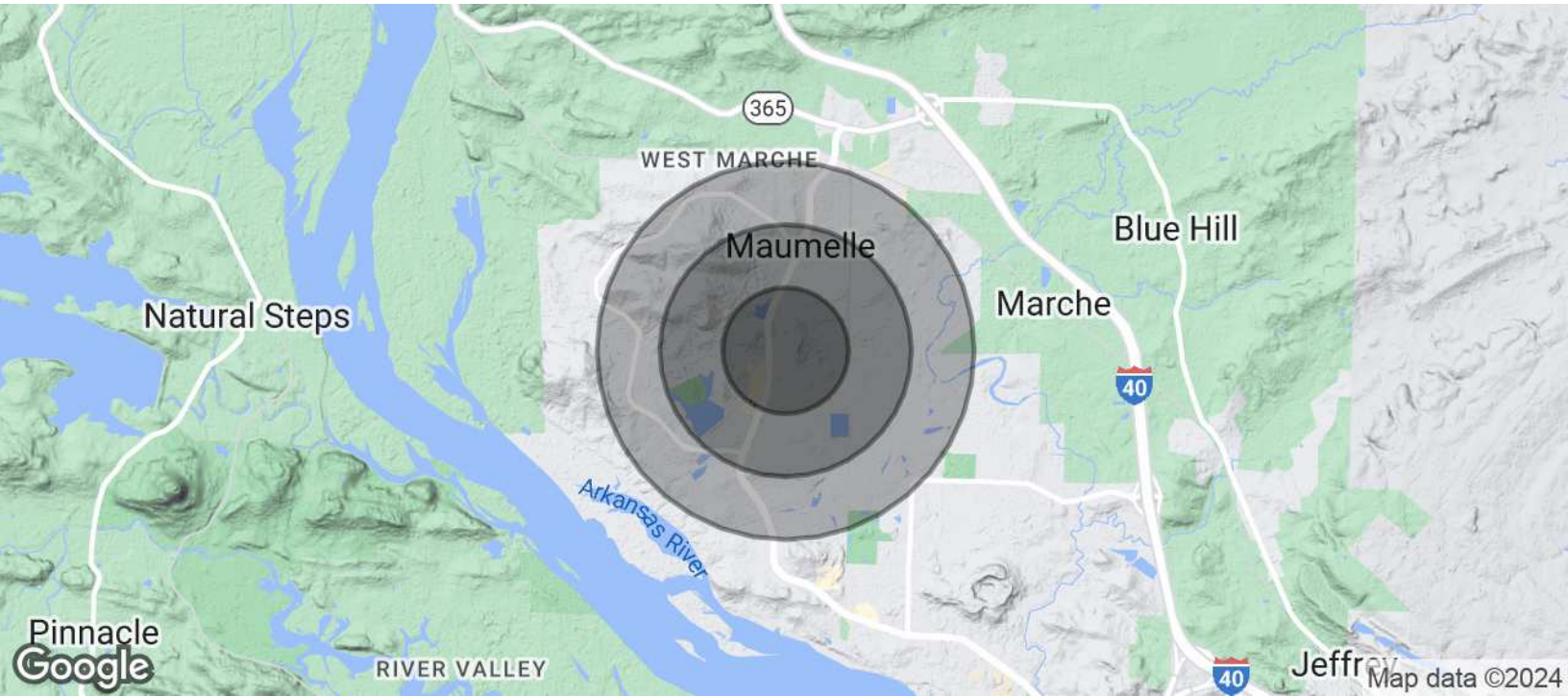
1501 N. University Avenue, Ste. 800
 Little Rock, AR 72207
 501.664.7807
 www.rpmgroup.com





Demographics Map & Report

COMMERCIAL & INVESTMENT DIVISION



POPULATION	0.5 MILES	1 MILE	1.5 MILES
Total Population	1,008	5,555	11,240
Average Age	38.2	38.1	40.0
Average Age (Male)	38.8	39.1	40.1
Average Age (Female)	36.1	35.5	38.6
HOUSEHOLDS & INCOME	0.5 MILES	1 MILE	1.5 MILES
Total Households	412	2,308	4,675
# of Persons per HH	2.4	2.4	2.4
Average HH Income	\$63,748	\$82,817	\$91,068
Average House Value	\$1,790,002	\$559,386	\$343,917

* Demographic data derived from 2020 ACS - US Census

Information is deemed reliable but is not guaranteed. Agency Disclosure: RPM Group is the agent for the owner of the property described herein.

MARK BINGMAN
 (C)501.680.1707 | (O)501.916.8253
 mbingman@rpmgroup.com

1501 N. University Avenue, Ste. 800
 Little Rock, AR 72207
 501.664.7807
 www.rpmgroup.com

