

BUILDING 100
1,013,902 SF
623.125' x 1,627.125'

126 TRAILER SPACES @ 12'

STORMWATER POND #1
(PERM. POOL)
(765.00)

SOCIAL CIRCLE PARKWAY
aka STATE ROUTE 11
(VARIABLE R/W) (PUBLIC ROAD)

EAST HIGHTOWER TRAIL
(aka STATE ROUTE 229)
(60' R/W) PUBLIC ROAD

AMBER STAPP
STUDDARD ROAD
(VARIABLE R/W) PUBLIC ROAD

APPROXIMATE LAND LOT LINE

APPROXIMATE LAND LOT LINE

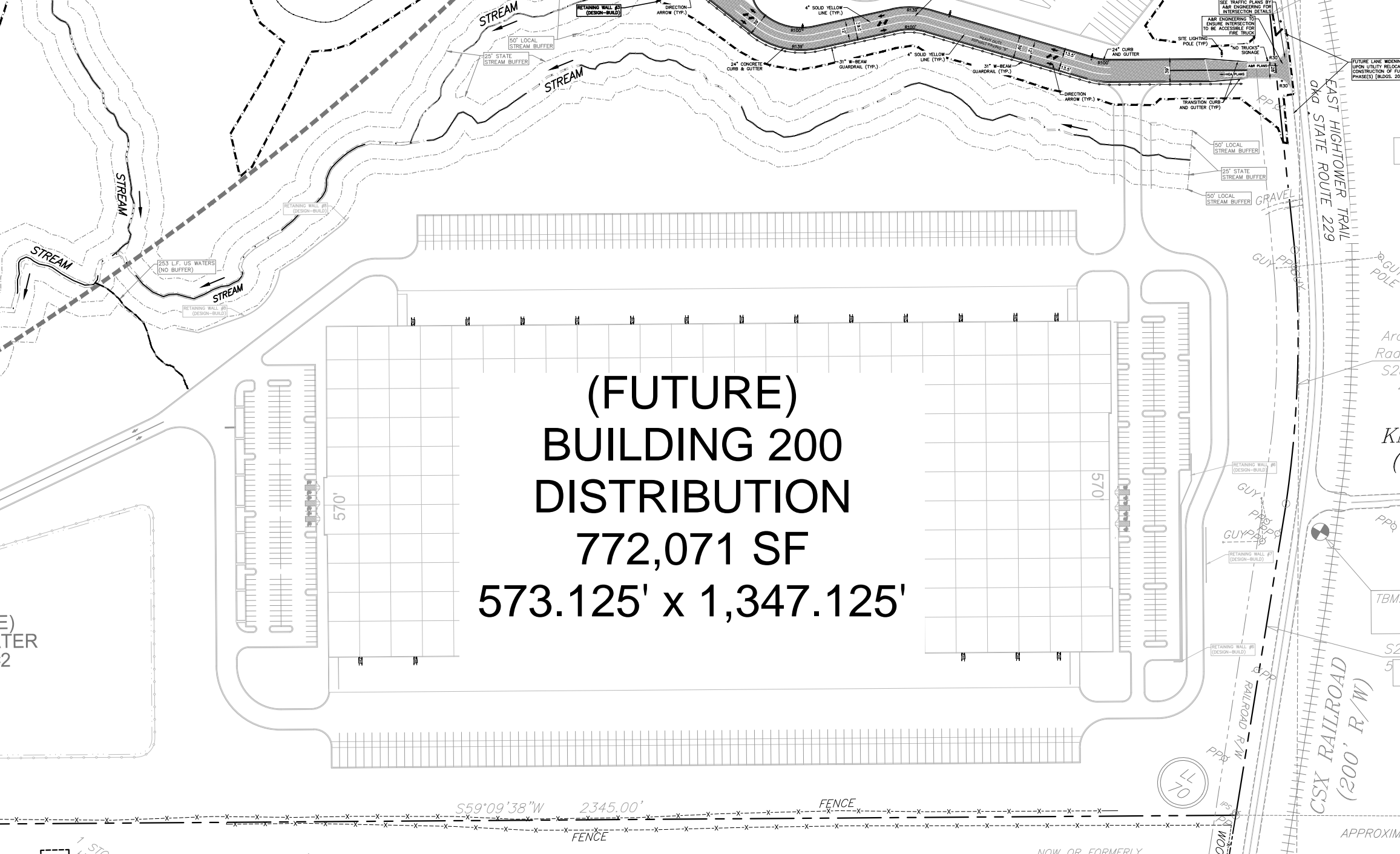
ZONING: AG

ZONING: A1
(WALTON CO.)

OFFICE = 782.00

SEE TRAFFIC PLANS BY
LAND ENGINEERING FOR
INTERSECTION DETAILS
SEE TRAFFIC PLANS BY
LAND ENGINEERING FOR
ENGINE INTERSECTION
TO BE ACCESSIBLE FOR
FIRE TRUCKS
SEE TRAFFIC PLANS BY
LAND ENGINEERING FOR
ENGINE INTERSECTION
TO BE ACCESSIBLE FOR
FIRE TRUCKS
SEE TRAFFIC PLANS BY
LAND ENGINEERING FOR
ENGINE INTERSECTION
TO BE ACCESSIBLE FOR
FIRE TRUCKS

(FUTURE)
BUILDING 200
DISTRIBUTION
772,071 SF
573.125' x 1,347.125'



S59°09'38"W 2345.00'

FENCE

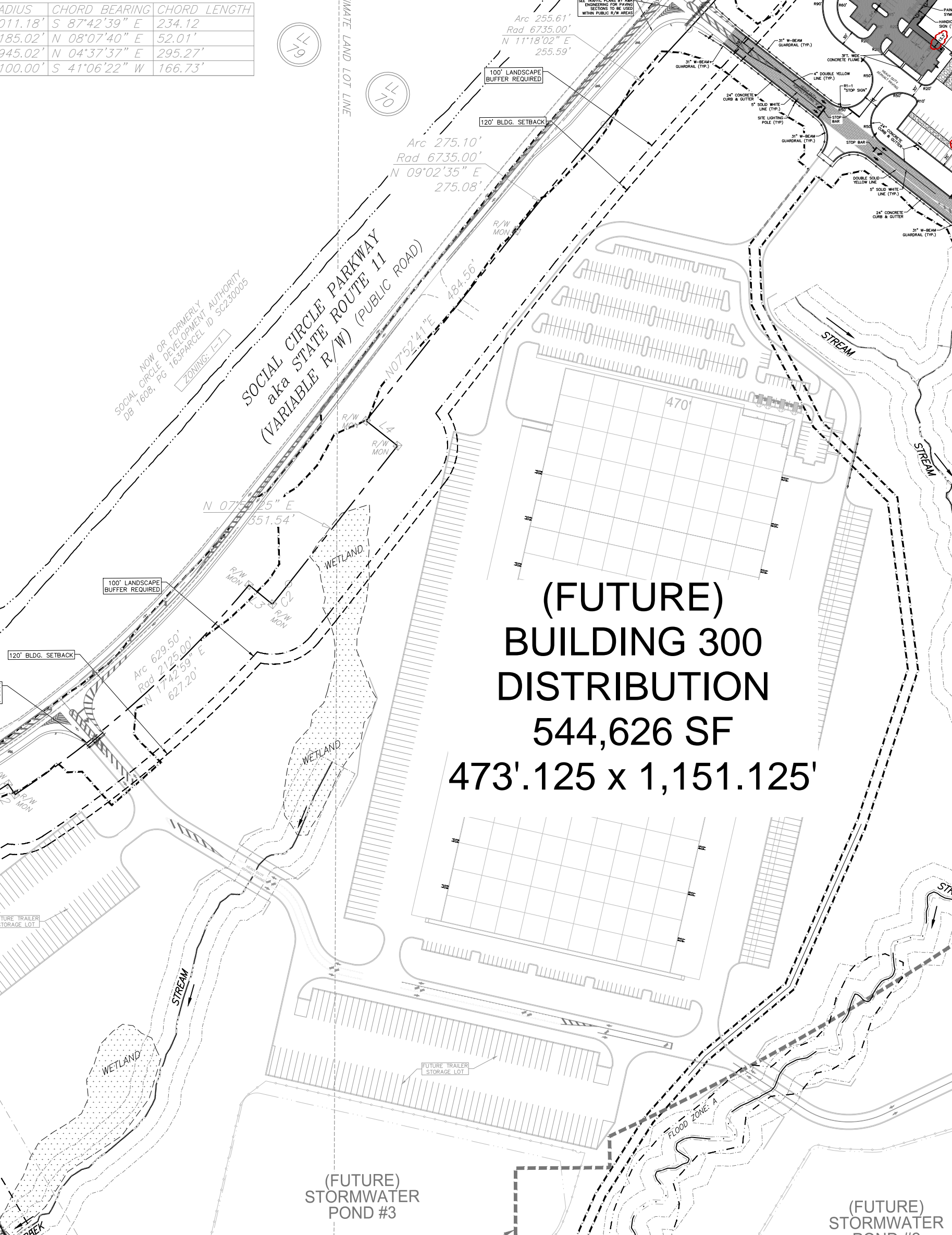
FENCE

LL
70

CSX RAILROAD
(200' R/W)

APPROXIM

RADIUS	CHORD BEARING	CHORD LENGTH
111.18'	S 87°42'39" E	234.12
185.02'	N 08°07'40" E	52.01'
945.02'	N 04°37'37" E	295.27'
100.00'	S 41°06'22" W	166.73'



**(FUTURE)
BUILDING 300
DISTRIBUTION
544,626 SF
473'.125 x 1,151.125'**

NOW OR FORMERLY AUTHORITY
SOCIAL CIRCLE DEVELOPMENT
DB 1608, PG 163/PARCEL ID SC230005
ZONING: I-1

**SOCIAL CIRCLE PARKWAY
aka STATE ROUTE 11
(VARIABLE R/W) (PUBLIC ROAD)**

**(FUTURE)
STORMWATER
POND #3**

**(FUTURE)
STORMWATER
POND #3**