

# 124,850 Square Foot INDUSTRIAL CAMPUS

- 120,300 SF Manufacturing/Distribution Building
- 18-22 ' clear height
- 4,550 SF class Office Building
- Over 5 acres of paved laydown area
- CSX Rail

185 Wire Drive:: Andrews, SC



FOR MORE INFORMATION CONTACT

**Bob Barrineau**

Senior Vice President

843.577.1157

[Robert.barrineau@cbre.com](mailto:Robert.barrineau@cbre.com)

**Brendan Redeyoff**

Associate

843.577.1167

[Brendan.redeyoff@cbre.com](mailto:Brendan.redeyoff@cbre.com)

**CBRE**



185 Wire Drive Andrews, SC

Bob Barrineau

Senior Vice President

843.577.1157

[Robert.barrineau@cbre.com](mailto:Robert.barrineau@cbre.com)

Brendan Redeyoff

Associate

843.577.1167

[Brendan.redeyoff@cbre.com](mailto:Brendan.redeyoff@cbre.com)

**Building Address:** 185 Wire Drive  
Andrews, SC

**Building Name:** Andrews Wire

**Total Size:** 124,850 Sq. Ft.  
**Office Sq Ft:** 4,550 Sq. Ft.  
**Warehouse Sq ft:** 120,300 Sq. Ft.

**Lighting:** Metal Halide and  
Sodium Vapor

**Construction:**  
Floors: 6" concrete  
Walls: Uninsulated Metal Panels  
Columns: Steel I-Beam  
Roof: Metal

**Ceiling Heights:** 18' – 22'  
**Doors:** 6 Dock Doors  
1 Drive In  
**Condition:** Average

**Year Built:** 1981 & 1992

**Land:** 89 Acres

**Possession:** Immediate

**Column Spacing:** 25' x 50' and 30' x 50'

**Bob Barrineau**

Senior Vice President

843.577.1157

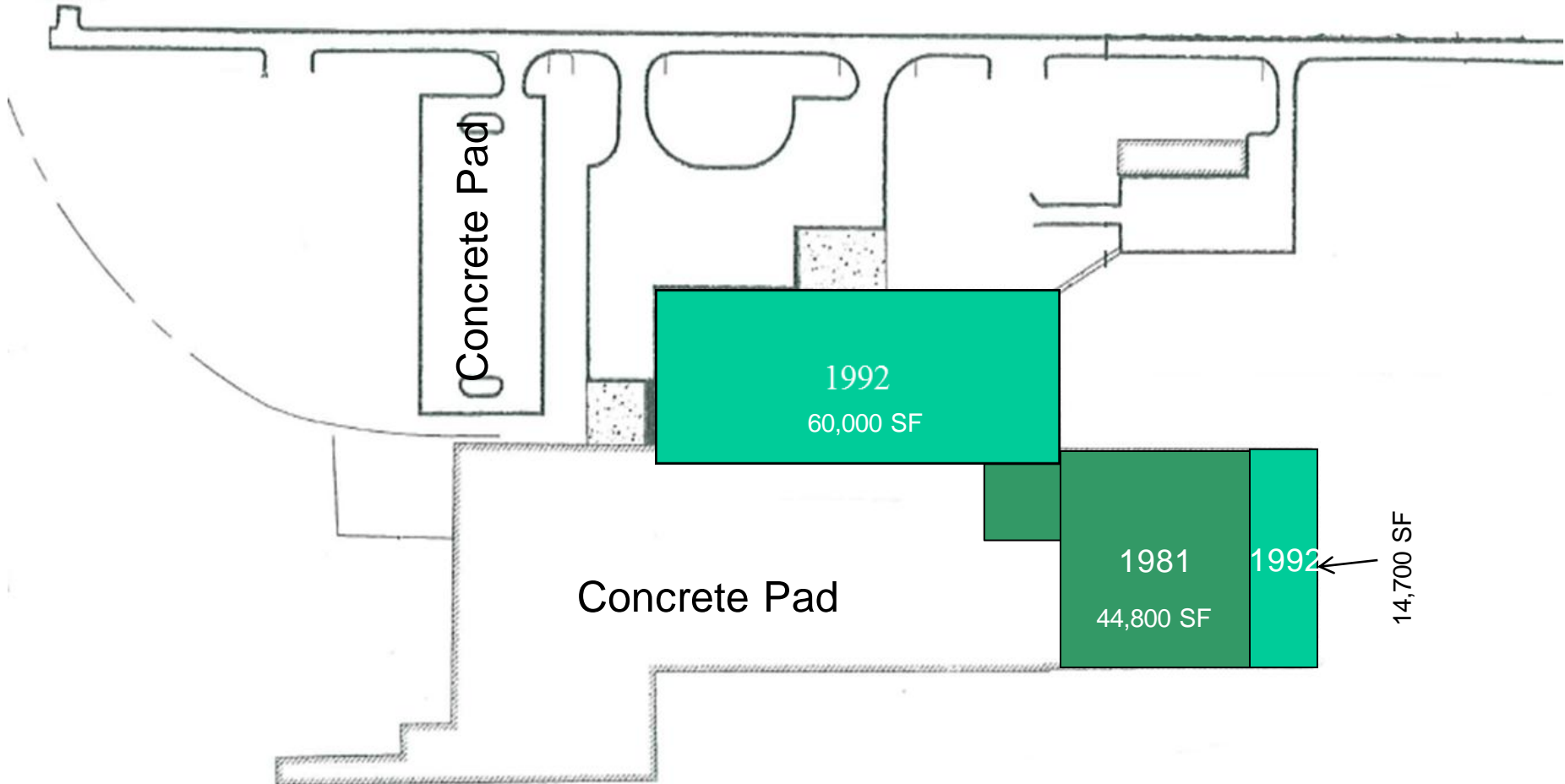
[Robert.barrineau@cbre.com](mailto:Robert.barrineau@cbre.com)

**Brendan Redeyoff**

Associate

843.577.1167

[Brendan.redeyoff@cbre.com](mailto:Brendan.redeyoff@cbre.com)



**Bob Barrineau**

Senior Vice President

843.577.1157

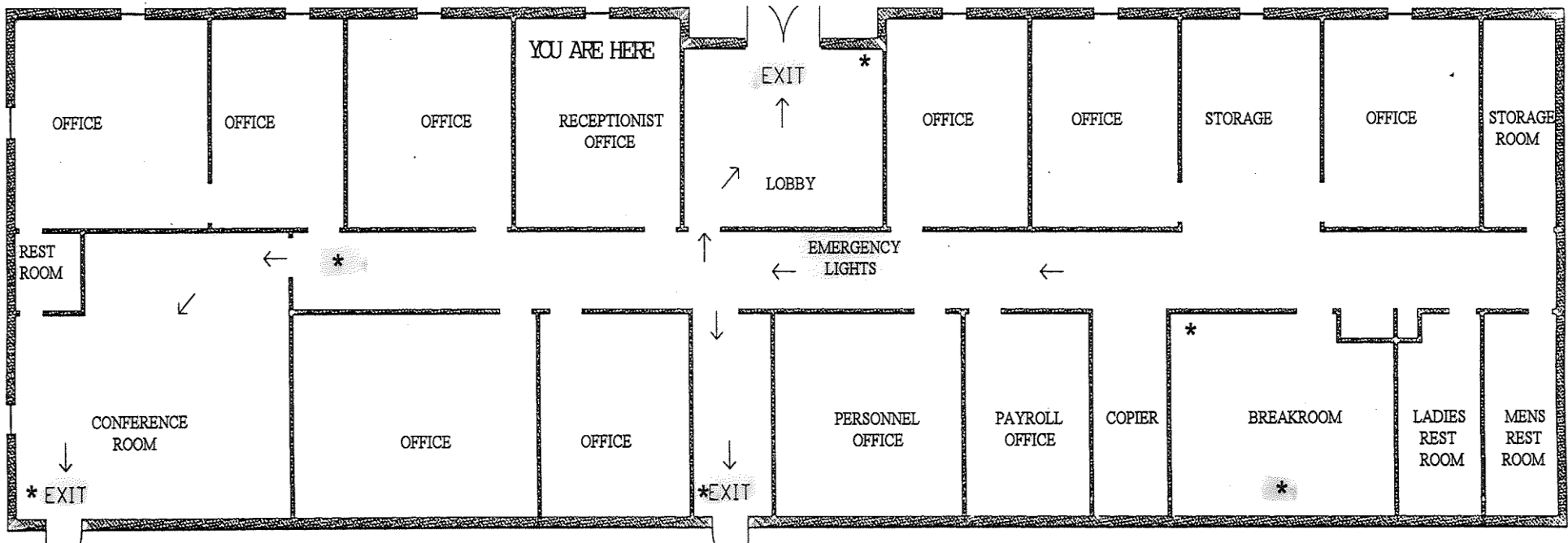
[Robert.barrineau@cbre.com](mailto:Robert.barrineau@cbre.com)

**Brendan Redeyoff**

Associate

843.577.1167

[Brendan.redeyoff@cbre.com](mailto:Brendan.redeyoff@cbre.com)



**Bob Barrineau**

Senior Vice President

843.577.1157

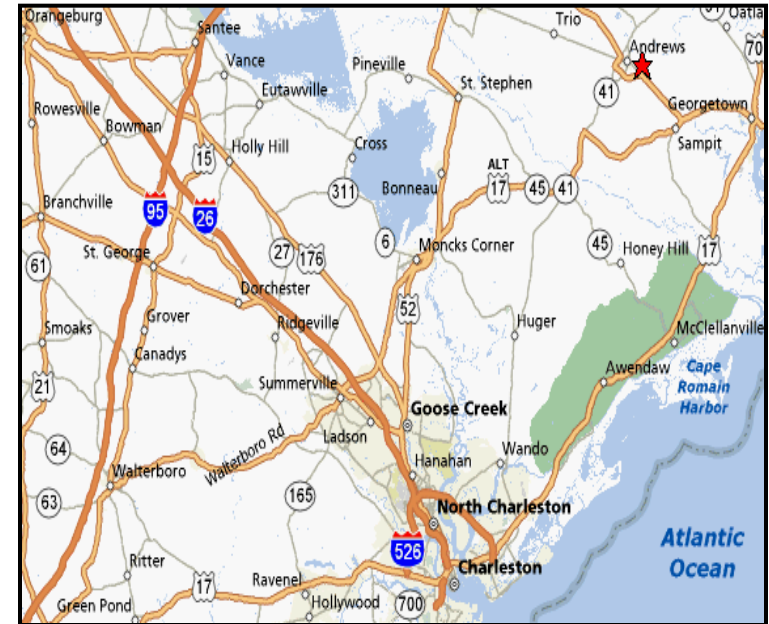
[Robert.barrineau@cbre.com](mailto:Robert.barrineau@cbre.com)

**Brendan Redeyoff**

Associate

843.577.1167

[Brendan.redeyoff@cbre.com](mailto:Brendan.redeyoff@cbre.com)



**Location:** Located adjacent to Georgetown County industrial park, just outside the town of Andrews. Great supply of skilled labor in the area. Located just off of Highway 521.