

FOR LEASE

±14,367 SF
500 PORTER WAY
PLACENTIA, CA



BUILDING HIGHLIGHTS

- + Free Standing Building
- + Total Size: ±14,367 SF
- + Parcel Size: ±0.85 Acres
- + Office Size: ±1,700 SF
- + Two (2) Dock High Doors
- + One (1) Grade Level Door
- + 18' Minimum Clear Height
- + Power: 400 Amps
- + Fully Fire Sprinklered
- + Business Park Environment
- + East Access to the 91 and 57 Freeways



CONTACT US

KEITH GREER

+1 714 371 9209
keith.greer@cbre.com
Lic. 01899022

BEN SEYBOLD

+1 714 371 9233
ben.seybold@cbre.com
Lic. 01081310

SEAN WARD

+1 714 371 9222
sean.ward@cbre.com
Lic. 01415499

KENNY PATRICIA

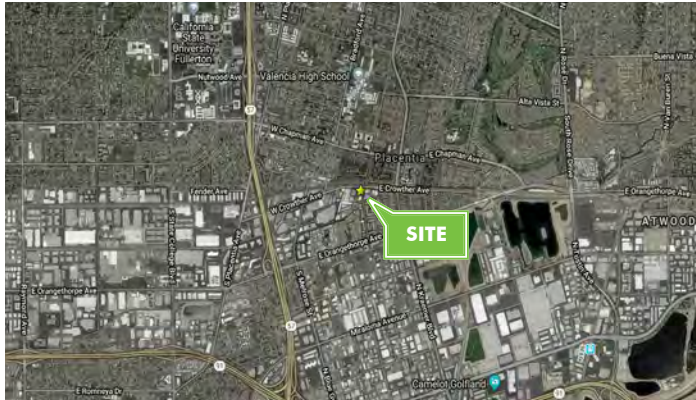
+1 714 371 9221
kenneth.patricia@cbre.com
Lic. 01999969

www.cbre.com

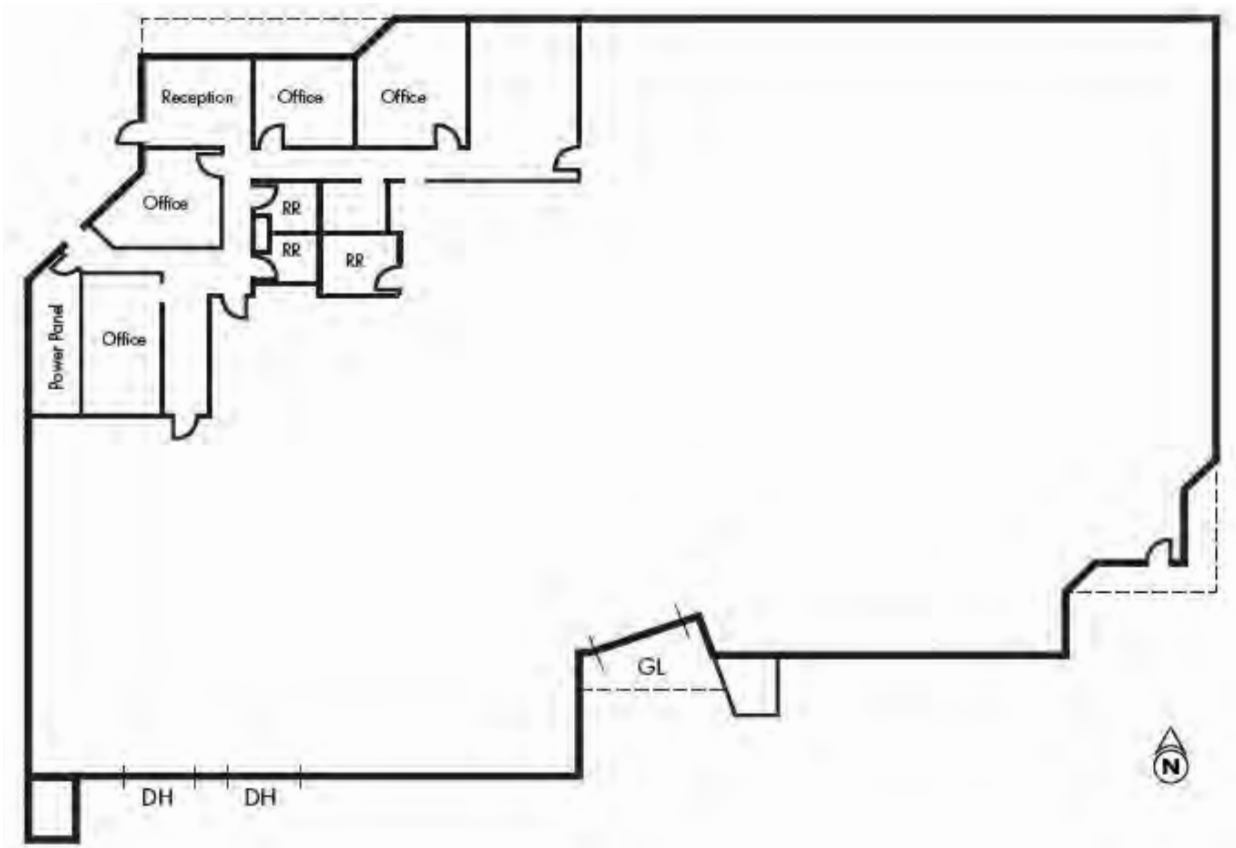
CBRE

AVAILABLE
±14,367

**500
PORTER WAY**
Placentia, CA



SITE PLAN



©2018 CBRE, Inc. This information has been obtained from sources believed reliable. We have not verified it and make no guarantee, warranty or representation about it. Any projections, opinions, assumptions or estimates used are for example only and do not represent the current or future performance of the property. You and your advisors should conduct a careful, independent investigation of the property to determine to your satisfaction the suitability of the property for your needs. CBRE and the CBRE logo are service marks of CBRE, Inc. and/or its affiliated or related companies in the United States and other countries. All other marks displayed on this document are the property of their respective owners.