

29-31 N. MAIN STREET
WATKINSVILLE, GA 30677



721 & 736 SF AVAILABLE FOR LEASE

Presented By:

Philip Ashford
706-308-7079
pashford@nicholsland.net



Nichols Land & Investment Company

2500 Daniells Bridge Rd,
Bldg. 200, Suite 1-F
Athens, GA 30606
706-353-3900

www.nicholsland.net



29-31 N. MAIN STREET, WATKINSVILLE, GA 30677



PROPERTY SUMMARY

Building Size:	7,000 SF
Available Space:	721 & 736 SF
Rental Rate:	\$18/sf/yr MG

PROPERTY OVERVIEW:

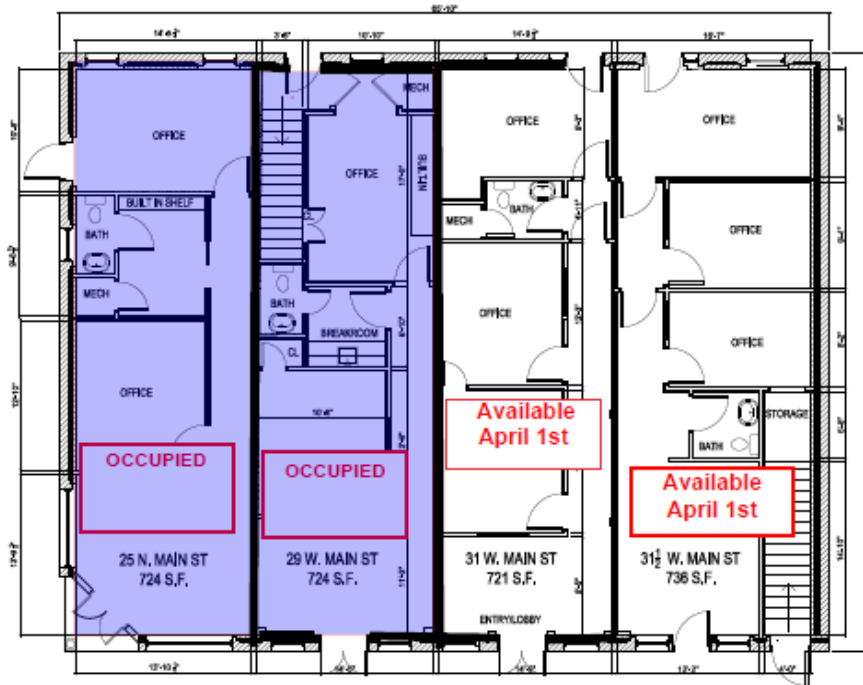
A beautiful Historic two story multi-tenant building located in the heart of Downtown Watkinsville. Two spaces on the first floor are available for lease beginning April 1st. Either suite would be a perfect space for a law firm or other professional service.

LOCATION OVERVIEW:

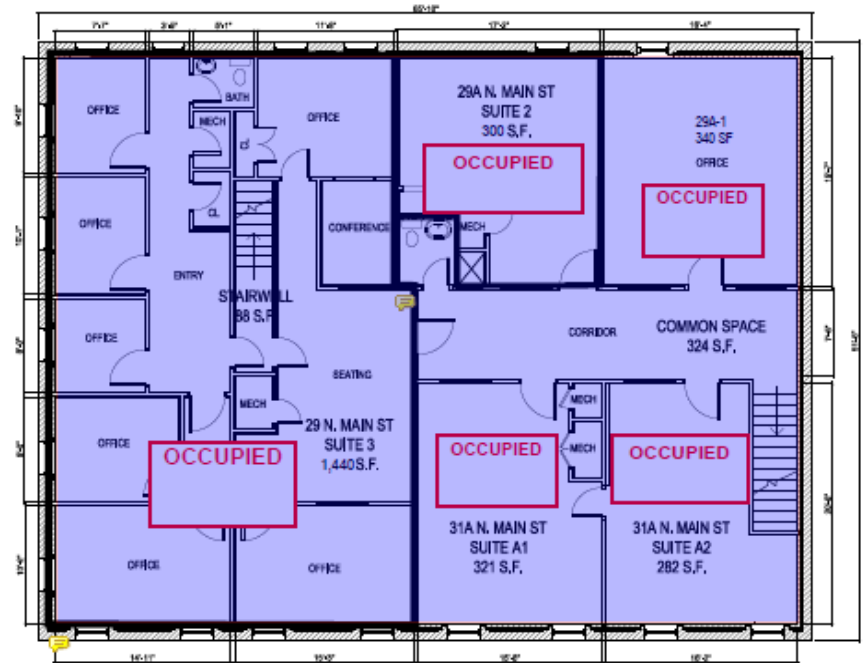
29-31 N. Main Street is located in Downtown Watkinsville next door to the Oconee County Courthouse. Close proximity to dining, banking and shopping.

Philip Ashford
706-308-7079
pashford@nicholsland.net

2500 Daniells Bridge Rd.
Bldg 200, Suite 1-F
Athens, GA 30606
www.nicholsland.net



1 FIRST FLOOR PLAN
3/16" = 1'-0"



2 SECOND FLOOR PLAN
3/16" = 1'-0"

Suite Number	Space Available	Rental Rate	Notes
31 W. Main Street	721 SF	\$1,100/month	Tenant pays utilities
31 1/2 W. Main Street	736 SF	\$1,100/month	Tenant pays utilities



29-31 N. MAIN STREET, WATKINSVILLE, GA 30677



The information contained herein is believed to be accurate & obtained from reliable sources, no warranty or representation is made. All parties should preform the necessary due diligence to confirm any statistics to their own satisfaction of investigation

Philip Ashford
706-308-7079
pashford@nicholsland.net

2500 Daniells Bridge Rd.
Bldg 200, Suite 1-F
Athens, GA 30606
www.nicholsland.net