

A new urban district for Stoke-on-Trent

Retail & leisure opportunities
at the heart of Stoke-on-Trent

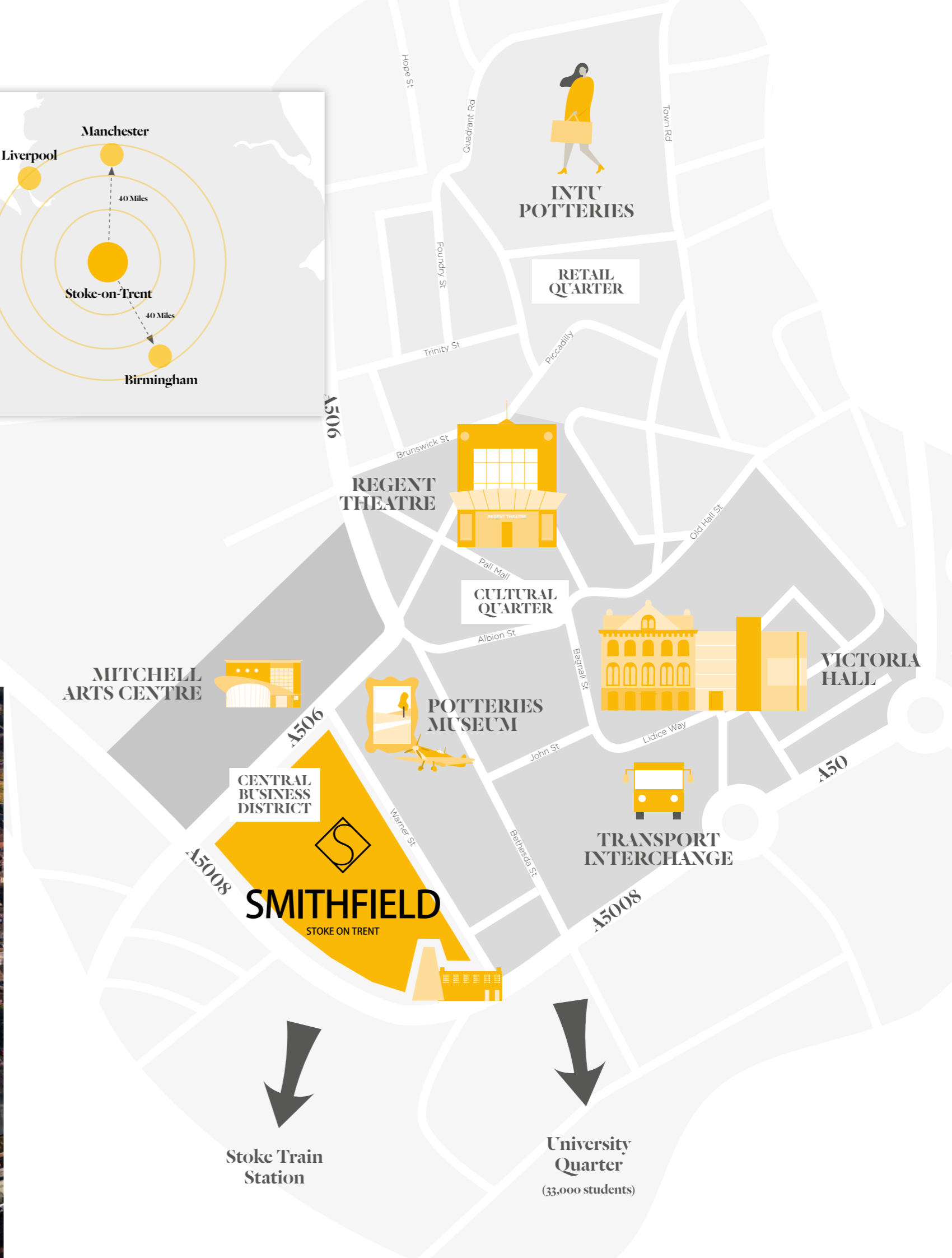


SMITHFIELD
STOKE ON TRENT



Perfectly placed

Right at the heart of the City Centre, Smithfield is building a community that is perfectly placed for future growth.





Smithfield is a new urban quarter for Stoke-on-Trent which, when completed, will comprise 1.2 million sq.ft of office, retail and hotel space.

It is currently home to over 1,700 workers with 151 apartments and a 140 bed Hilton Hotel opening in late 2019, with outline permission secured for a further 200,000 sq.ft office accommodation.

Smithfield is adjacent to the Cultural Quarter, which is home to the Potteries Museum where a new dedicated £6m Spitfire display is being created, the Regent Theatre and the Mitchell Arts Centre.

Schedule of areas

Unit	MP	Sq Ft	Availability
1	458	4,929	AVAILABLE NOW
2	355	3,821	AVAILABLE NOW
3	111	1,199	AVAILABLE NOV '19
4	637	6,854	AVAILABLE NOV '19
5	120	1,291	AVAILABLE NOV '19

Tenant Schedule

1 Smithfield



2 Smithfield



4a Smithfield





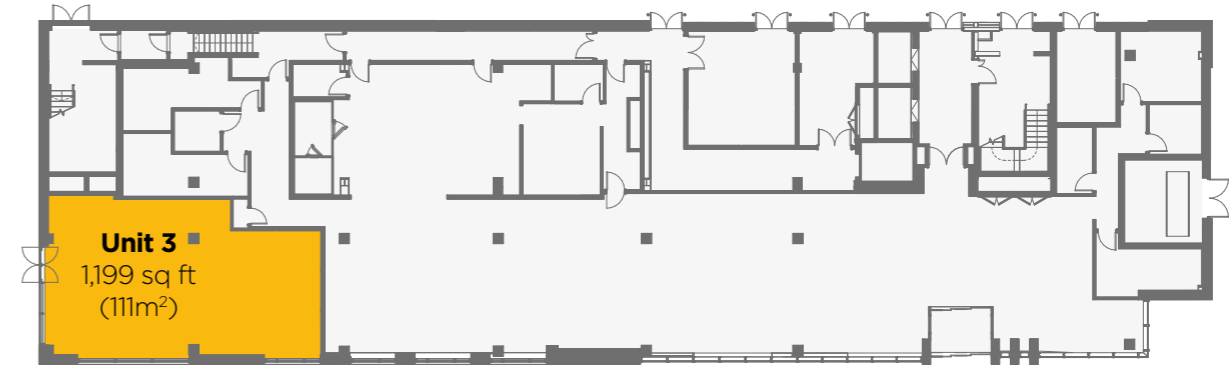
2 Smithfield

Available Now



Hilton Garden Inn

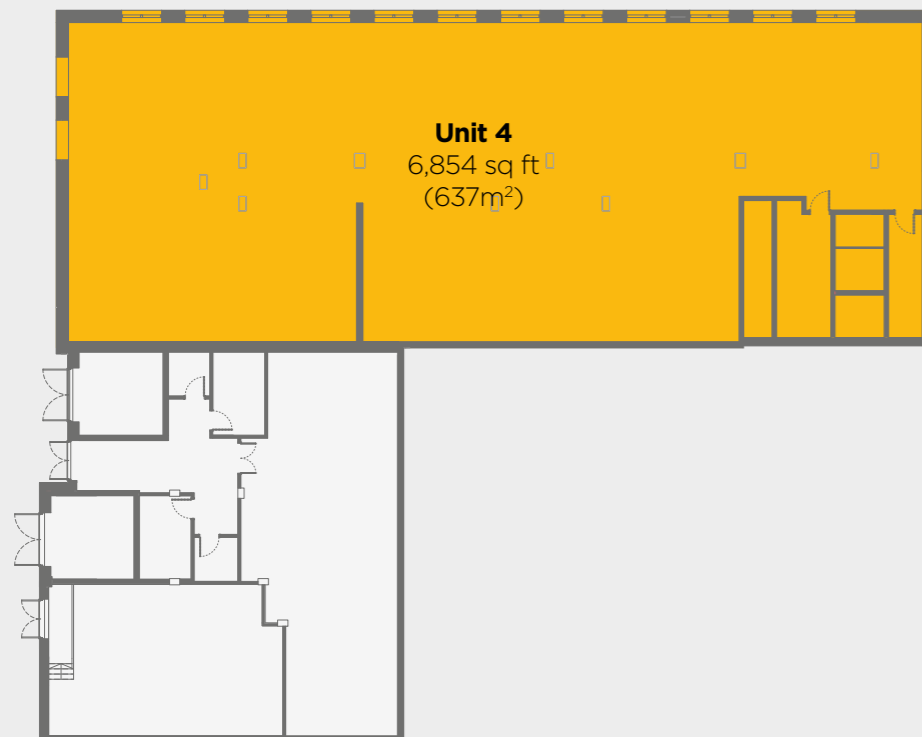
Available November 2019



Clayworks

Available November 2019

Lower Ground Floor



Ground Floor





Get in touch

- High quality, shell specification accommodation available
- Available for immediate occupation by way of a new, effectively full repairing and insuring lease for a term to be agreed
- Units are capable of subdivision
- Rent upon application
- Opportunity for outdoor seating
- Short and long term opportunities
- Pop-up/temporary opportunities

All enquiries:

WARWICK SMITHER

T: 0161 832 3375

E: WSMITHER@CHEETHAM-MORTIMER.COM

CONOR MULLOY

T: 0161 828 8794

E: CMULLOY@CHEETHAM-MORTIMER.COM

