



AVAILABLE - TO LET/FOR SALE

SPITALFIELDS OFFICES

18 CALVIN STREET, SPITALFIELDS, LONDON E1 6HF

Office

For Sale & Rent, 1,656 Sq Ft £1,150,000 For the long leasehold interest £37.50 Per Sq Ft

All enquiries to

020 7375 1801

strettons.co.uk



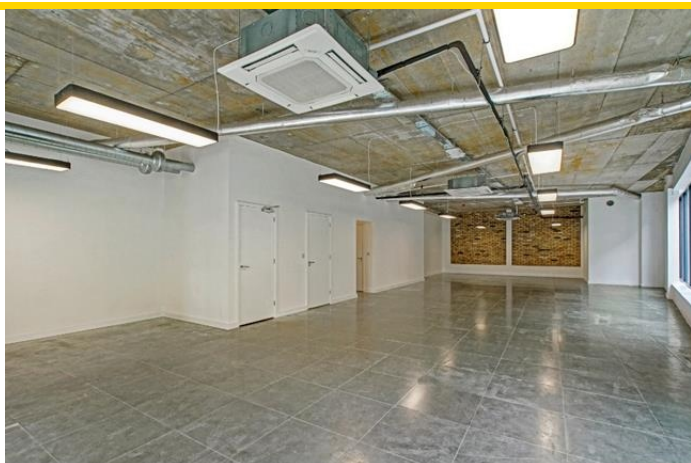
STRETTONS

EST 1931

18 CALVIN STREET, SPITALFIELDS, LONDON E1 6HF

Office

For Sale & Rent, 1,656 Sq Ft £1,150,000 For the long leasehold interest £37.50 Per Sq Ft



Spitalfields Offices

The unit is located on the ground floor of a residential development. It has recently undergone a fresh refurbishment and benefits from great natural light with full height glazing throughout. It would appeal to a multitude of occupiers from the creative, media and technology sectors.

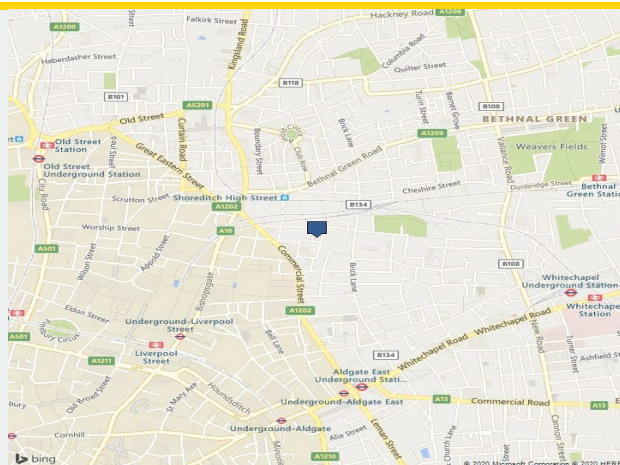
The property is located in the heart of Vibrant Spitalfields and is well served by public transport, with Liverpool Street (Central, Circle, Hammersmith & City and Metropolitan lines, Mainline services and Crossrail from 2018), Aldgate East (District and Hammersmith & City lines) and Shoreditch High Street (Overground) all within a 5 minute walk, as well as numerous bus routes serving the area.

Highlights

- Fully raised access flooring
- Generous ceiling height at ground level
- Kitchen and shower room
- Ground floor frontage
- Air conditioning
- Excellent natural light

Price	£1,150,000 For the long leasehold interest
Rent	£37.50 Per Sq Ft
Business Rates (Est)	Rates Payable 2019/20 - £7.03 per sq ft
Building type	Office
Service Charge (Est)	Budget 2019/2020 £2.00 per sq ft
EPC Rating	Band E
Lease Details	A new lease is available

Floor	Size Sq Ft	Status
Ground Floor	1,656	AVAILABLE - To Let/For Sale
Total Internal		



Contact us

Strettons

1-3 Sun Street, London, EC2A 2EP
strettons.co.uk
020 7375 1801
@strettons1931

Scott Ward-Reece

D 020 7614 0902
scott.wardreece@strettons.co.uk

Tom Schwier

D 020 7614 0906
tom.schwier@strettons.co.uk

These particulars do not constitute an offer or contract. Applicants should satisfy themselves as to the correctness of the details. Value added tax may be payable on rents, prices or