



£975 per month

Fourth Floor Penthouse, Nicholas House, EN1 3TF



About the Property

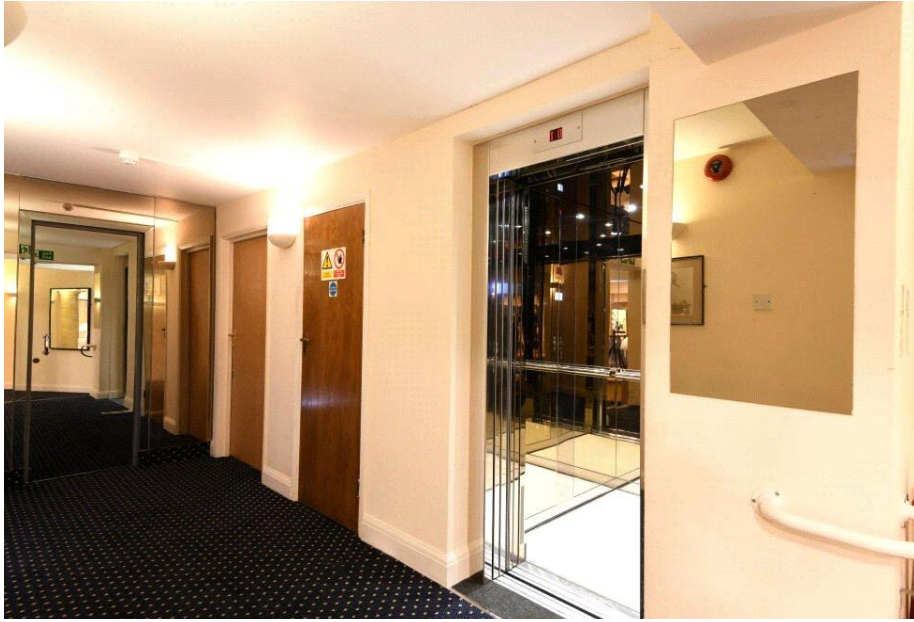
Fourth Floor Office Suite – Available for Immediate Occupation. A well-presented 390 sq ft office suite situated on the fourth floor (top floor) of this established multi-let office building in the heart of Enfield Town.

Tenure: To be advised

EPC: To be confirmed (0)

Council Tax -







Fourth Floor Penthouse, Nicholas House, EN1 3TF

£975 per month

390 sq ft Fourth Floor Office Suite – Available for Immediate Occupation

A well-presented 390 sq ft office suite situated on the fourth floor (top floor) of this established multi-let office building in the heart of Enfield Town.

The office provides bright and functional accommodation, ideal for small businesses, consultants, professional practices, and growing enterprises seeking a well-connected town centre location.

Occupiers benefit from a professional working environment with access to communal facilities and excellent transport links.

The building is located directly opposite Enfield Town Station, providing convenient access to Liverpool Street in approximately 35 minutes, while the Great Cambridge Road (A10) and Junction 25 of the M25 motorway are easily accessible. Palace Gardens Shopping Centre, cafés, restaurants, and other local amenities are all within a short walk.

Occupiers benefit from a fully staffed reception during business hours and 24/7 access to the building.

Key Features

- 390 sq ft office suite



NICHOLAS HOUSE, ENFIELD

KEY FEATURES

- - Four Storey Office Building
- - Various Offices Available
- - Open Plan Lobby
- - Reception Staff
- - WC's on Alternative Floors
- - Lift Access
- - Kitchenette
- - Private Car Parking
- - Prices From £15 Per Square Foot
- - Viewings Encouraged!

Duncan Phillips - London (DP)

1 Beauchamp Court, 10 Victors Way
EN5 5TZ

T: 01993 701 133

E: info@duncanphillips.co.uk

www.duncanphillips.co.uk

Duncan Phillips Management Limited

Registered address is: Suite 1, Elmhurst, 98-106 High Road, South Woodford E18 2QH Registered Company
number: 129421124

Disclaimer

Every attempt has been made to ensure accuracy, however these property particulars are approximate and for illustrative purposes only. They have been prepared in good faith and they are not intended to constitute part of an offer of contract. We have not carried out a structural survey and the services, appliances and specific fittings have not been tested. All photographs, measurements, floor plans and distances referred to are given as a guide only and should not be relied upon for the purchase of any fixture or fittings. Lease details, service charges and ground rent (where applicable) are given as a guide only and should be checked prior to agreeing a sale.