

ENLARGED OFFICE FLOOR PLAN
SCALE: 1/4" = 1'-0"

ENLARGED OFFICE FLOOR PLAN NOTES:
GENERAL NOTES:
1. See Building Floor Plan for dimensions, doors, glazing, and other information for this area.

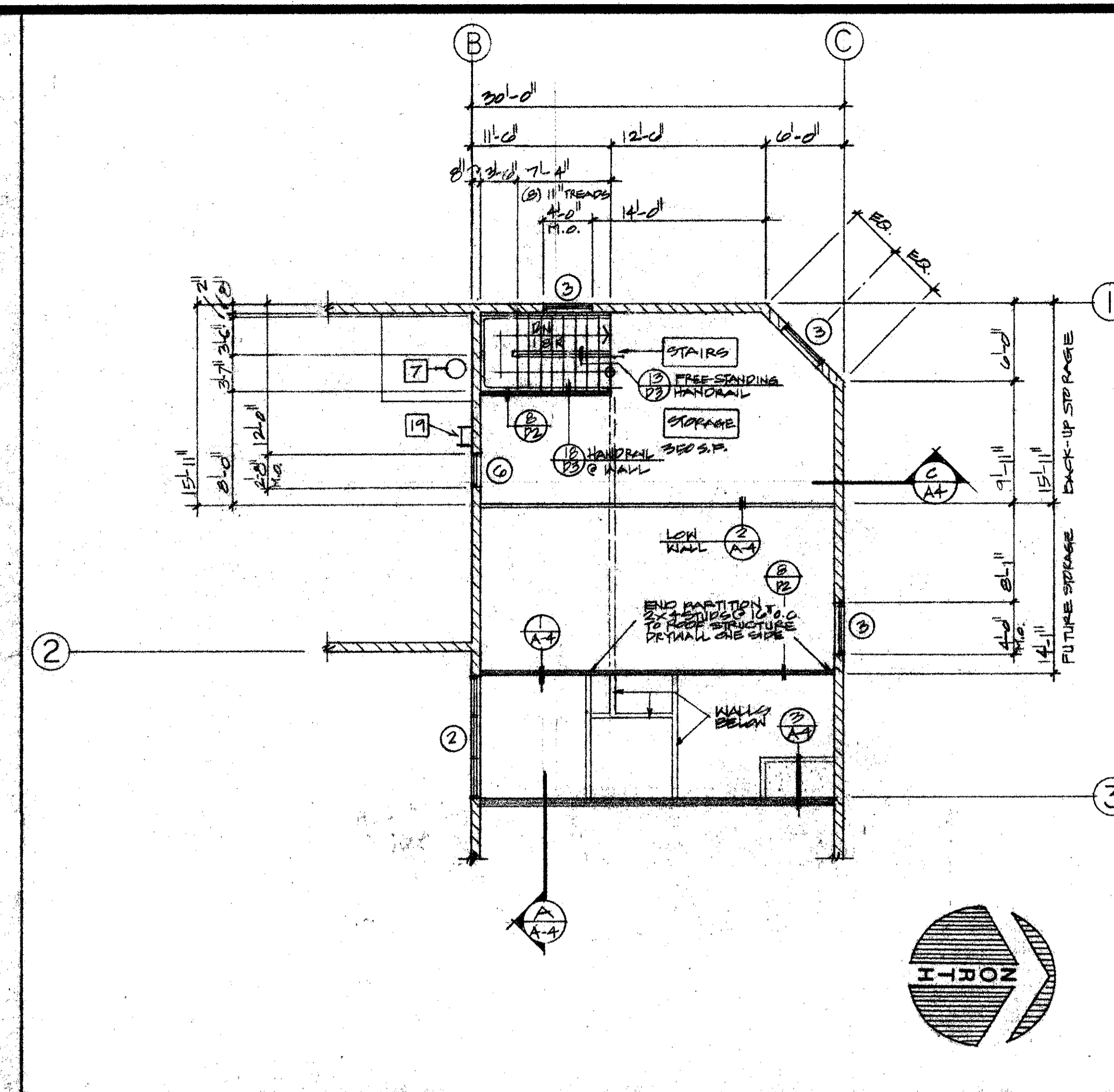
KEYED NOTES:
1. Built-in base and upper cabinet per Interior Elevations
2. Under-counter refrigerator per Interior Elevations
3. Microwave oven
4. Coffee maker
5. Bottled water dispenser
6. Fax machine
7. Copier
8. 60" x 18" w. x 72" h. storage shelving unit
9. Roof drain, overflow drain and fitting
10. 5 drawer vertical file
11. 4 drawer lateral file
12. 72" x 72" h. furniture partition (Steelcase, or eq.)
13. 75" x 72" h. furniture partition (Steelcase, or eq.)
14. 70" x 30" w. desk w/ drawer section (Steelcase, or eq.)
15. 45" x 20" w. return w/ drawer section (Steelcase, or eq.)
16. 70" x 16" d. upper cabinet (Steelcase, or eq.)
17. 60" x 21" w. desk (from reception area)
18. Unistom
19. CPU tower
20. Laserjet printer
21. Side chair
22. Coffee table
23. Desk chair
24. 24" x 18" w. rolling cart for printer
25. 72" (narrow) desk reception desk
26. 27" x 24" w. oval coffee table
27. Wing chair
28. 90" x 42" w. conference table
29. Conference chairs typ
30. 72" x 23" w. side table
31. 31" x 14" w. bookcase from David's office
32. David's side chair
33. David's desk (70" x 42" w.)
34. David's desk chair
35. David's credenza (72" x 20" w.)
36. David's shelf unit (20" x 16" w.)
37. 100A recessed electrical panel
38. Water closet
39. Lavatory
40. Grab bars: see Typical Restroom Detail for restroom accessories, etc.

NOT-IN-CONTRACT

FLOORING:
1. MARBLE TILE ENTRY:
A. Field Tile: Marghstone MB46 "Rose Aurora" 12"x12"x3/8" tiles (no grout joint, non-sanded "filler" to match tiles) by Verona Marble Company; rep. Max Morgan (714) 662-1278
B. Accent band Agglomerex C-25 "Verde Giada" 12"x12"x3/8" tiles by Verona Marble Company (Shown shaded on plan)

Note: for other flooring and finishes in Office, see Room Finish Schedule.

OFFICE FLOOR PLAN NOTES



SECOND FLOOR STORAGE PLAN
SCALE: 1/8" = 1'-0"

USE	SF	OCC.GP.	L.O.FACTOR	OCCUPANTS	EXITS
Auto Repair Bays	1004	S-3	100	19	1
Office	1172	B-2	100	12	1
Office 2nd Floor Storage	350	B-2	300	1	1
Future Diner (4000 sq ft)	1390	A-3	15	93	2

*See Additional File Storage Accessibility Note this sheet.

ADDITIONAL FILE STORAGE ACCESSIBILITY NOTE:
Per 1994 California Accessibility Manual Section 3105A(10), at least one type of storage cabinet shall be made accessible to the handicapped. There will be (6) file cabinets on the main office floor with a minimum 36" x 48" clearance for accessibility. Therefore, the back-up file storage at the upper level. Additional Storage Area does not need to be accessible.

OCCUPANT LOADS

ROOF PLAN NOTES:
GENERAL NOTES:
1. TYPICAL FLAT ROOFING: 4-ply built-up roofing per Manville Specification 40NC Class "B", with light gray cap sheet.
2. METAL CANOPY AND ROOF SCREEN PANELS:
a. Tonsen (TBC) "F-1" 24 gauge steel panels. (909) 428-1600
OR
b. ASC Pacific "Prestige 12" 24 gauge steel panels. (909) 823-0401
NOTE: #815R10 "Bright Red", #815W98 "Regal White", and #815T125 "Rawhide" are not standard colors for the Prestige 12 system.

METAL PANEL COLORS:
1. #815T119 "Weathered Copper"
2. #815T125 "Rawhide"
3. #815W98 "Regal White"
4. #815R130 "Bright Red" See Elevations and Details for color locations.

KEYED NOTES:

KEYED NOTES	DETAIL REF.
1. Masonry parapet with G.I. coping.	19/D-1
2. 2-Step metal panel canopy (flat metal panels at top).	1/D-2
3. Metal panel roof screen.	6/D-3
4. Space frame (N.I.C.) CANOPY PANELS IN GARAGE.	01T-A-2
5. Roof ladder.	2/D-1
6. Roof hatch.	27/D-1
7. Roof drain and overflow drain well assembly.	24/D-1
8. Plywood cricket.	24/D-1
9. Mechanical UNIT	22/D-1
10. Knee-brace unit	01T
11. Corner brace	01T
12. 3" fiber cant strip, u.o.c.	19/D-1
13. METAL PANEL CANOPY W/ PARAPET	2/D-3
14. METAL PANEL RETURN TO MATCH	2/D-3

ROOF PLAN NOTES

FLOOR PLAN NOTES:
GENERAL NOTES:
1. See Enlarged Office Floor Plan for additional notes for that area.

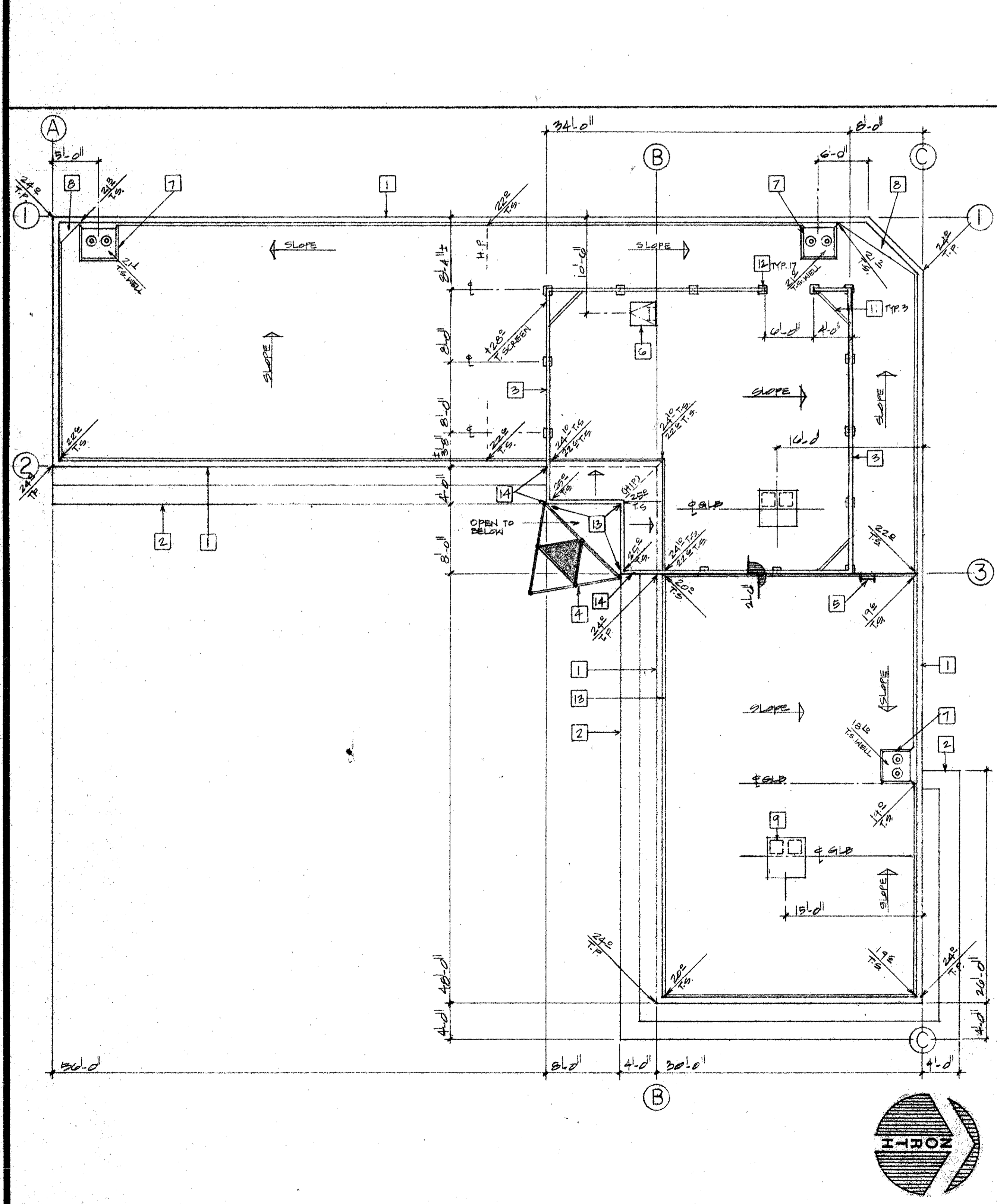
KEYED NOTES:

KEYED NOTES	DETAIL REF.
1. Handicapped flush tank water closet (1.6 gpf)	
2. Rough-in only for future water closet	
3. Wall-mounted lavatory	
4. Rough-in only in wall for future lavatory, or wet bar sink.	
5. Pony sink/hand sink with trap standard. Provide 24"x36" mirror in st. sl. frame, soap dispenser, paper towel dispenser.	01T-A-2
6. Electric drinking fountain.	11/D-3
7. 30 gallon electric water heater on platform above.	
8. In-line electric water heater.	
9. Roof drain (spill-out 1/2") and overflow drain (spill-out 1/4").	24/D-1, 4A-4
10. Air compressor (N.I.C.; power and air lines only)	
11. Floor drain / catch basin assembly connect to sand/oil interceptor.	25/D-1
12. Grease trap for future diner (750 gal capacity). (A.I.C.: PUT IN PLACE)	
13. Main electrical switchgear.	
14. House and site panel.	
15. Electrical panel: surface mounted	
16. Electrical panel: recessed	
17. 4' x 4' x 3/4" Telco backboard per GTE standard	
18. Irrigation controller.	
19. Steel roof ladder.	20/D-1
20. Pipe bollard.	10/D-3
21. Corner guard.	10/D-3
22. Structural steel column.	
23. Base and upper cabinet.	
24. Under-counter refrigerator: see Interior Elevations	
25. Copier (N.I.C.; power only)	14/D-3
26. Pony wall with cap	
27. Automatic boiler (N.I.C.; power only)	
28. Workbench (N.I.C.)	
29. Office furnishings (N.I.C.)	
30. 3-compartment sand/oil interceptor (750 gal capacity).	
31. Transformer pad.	
32. Location for gas meters.	
33. 2) public telephones.	20/D-1
34. Telephone shelf.	10/D-3
35. Shop service cabinet	
36. Map rack	
37. Second layer 5/8" drywall to ceiling this wall for sound. (FROM 51000 "HAWK")	
38. Ductile wall: below-drum-drum (N.I.C.) to roof beam. SECTION A/A	

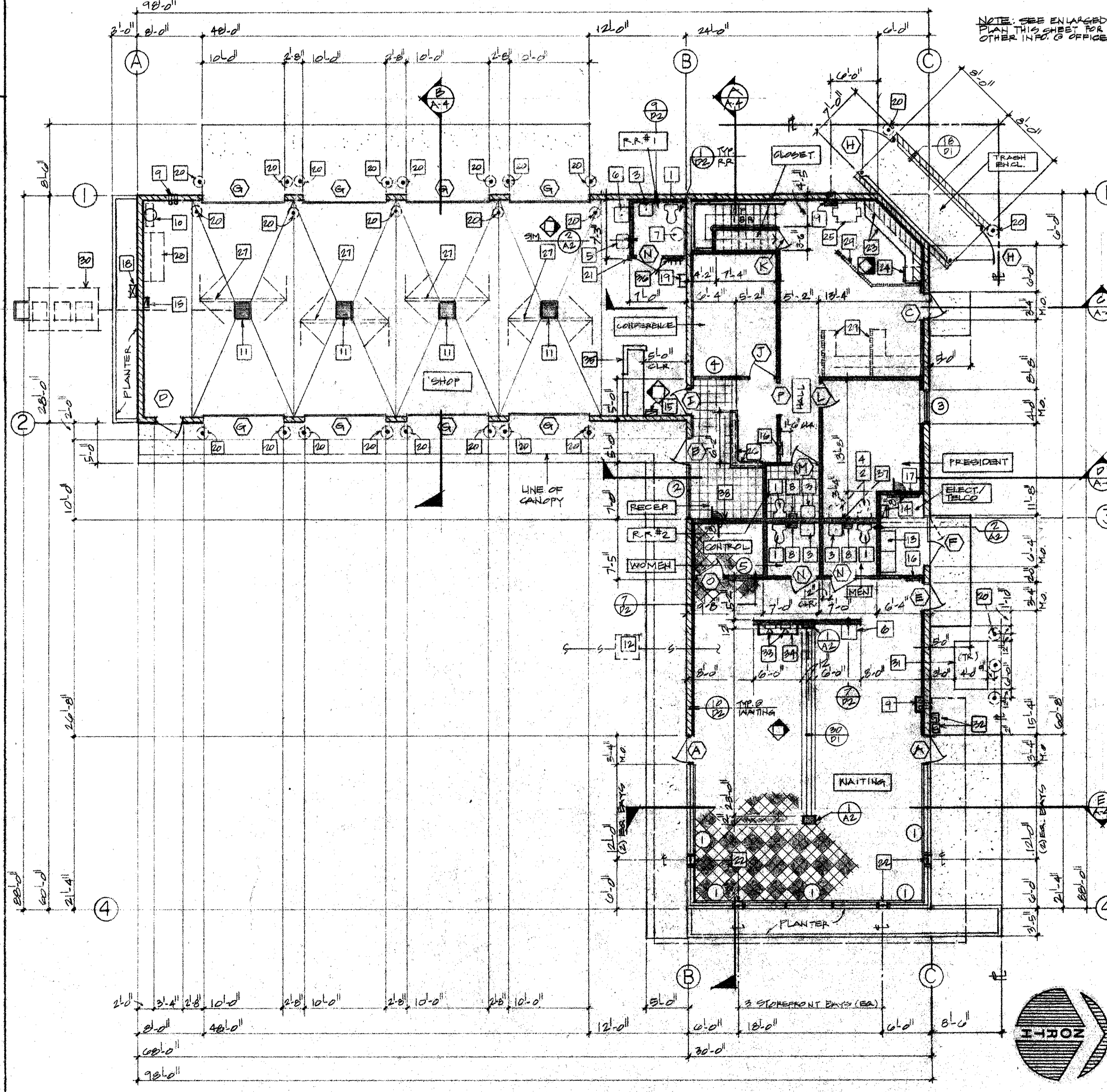
FLOOR PLAN NOTES

SECTION SHEET NO.	BUILDING SECTION
(Symbol)	SECTION SHEET NO.
(Symbol)	DETAIL REFERENCE
(Symbol)	ITEM # 1 EQUIPMENT SCHEDULE REFERENCE
(Symbol)	DOOR # A DOOR SCHEDULE REFERENCE
(Symbol)	WINDOW # 1 WINDOW SCHEDULE REFERENCE
(Symbol)	FULL HEIGHT (OR NEW) WALL, 2x4 STUDS @ 16" o.c. UNLESS NOTED OTHERWISE
(Symbol)	LOW (OR EXISTING) WALL
(Symbol)	EXISTING WALL TO BE REMOVED (OR WALL ABOVE/BELOW)
(Symbol)	INTERIOR ELEVATION REFERENCE

MISCELLANEOUS PLAN NOTES:
1. ALL DIMENSIONS ARE FROM FACE OF STUD, FACE OF MASONRY, AND CENTERLINE OF POST OR COLUMN UNLESS NOTED OTHERWISE.
2. ALL STUD WALLS ARE 2x4 STUDS @ 16" o.c., UNLESS NOTED OTHERWISE.



ROOF PLAN
SCALE: 1/8" = 1'-0"



FLOOR PLAN
SCALE: 1/8" = 1'-0"

FLOOR PLAN LEGEND

REVISIONS	BY

KALB CENTER
N.W.C. WILLOW STREET & CLARK AVENUE
LONG BEACH, CA

DAYTON ASSOCIATES ARCHITECTS
2900 SILVER LANE, NEWPORT BEACH, CA 92660 (714) 645-1717

DRAWN	CHECKED
DATE	SCALE
5/10/96	
JOB NO.	SHEET
95124	
A-1	