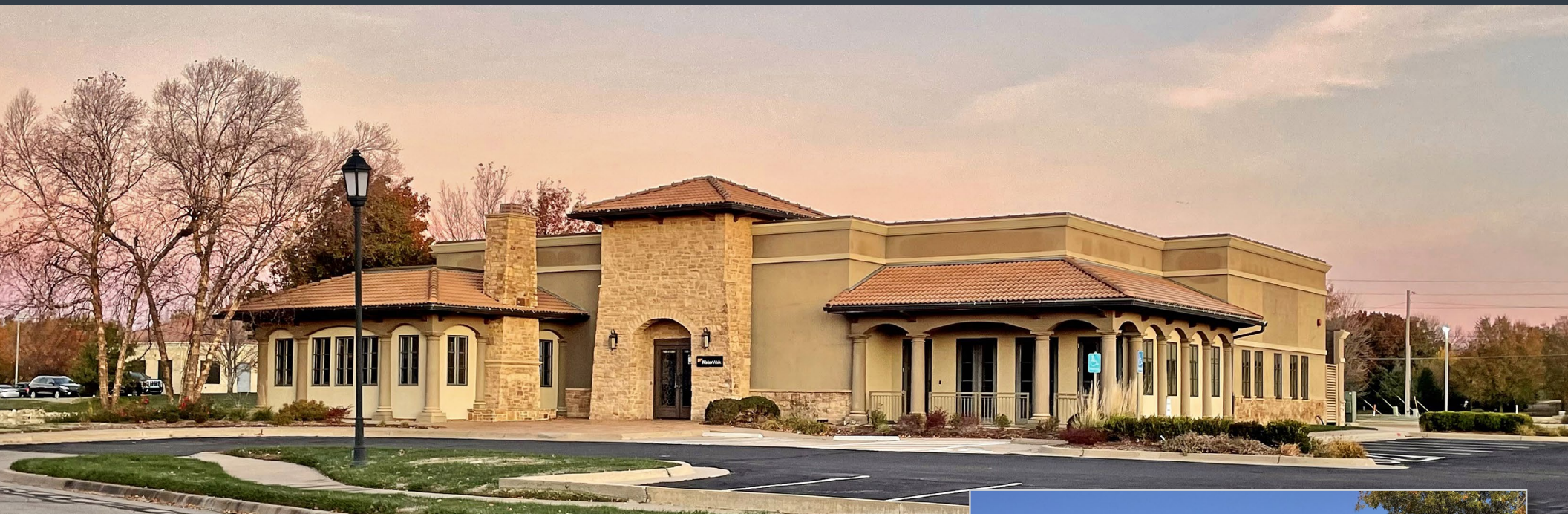


NORTHEAST OFFICE SPACE

FOR LEASE 2121 N. WEBB ROAD, WICHITA, KS 67206



LEASE RATE \$22.00/SF, NNN

AVAILABLE SPACE 6,347 SF

BUILDING SIZE 7,559 SF

SITE SIZE 60,317 SF (1.38± ACRES)

YEAR BUILT/REMODELED 2003/2017

PARKING 87 SPACES

TRAFFIC COUNTS



20,105 VPD ALONG 21ST ST. NORTH
18,344 VPD ALONG WEBB ROAD

PROPERTY HIGHLIGHTS

- Class A office space available for lease in one of the premier office parks in northeast Wichita.
- Conveniently located near the intersection of 21st and Webb Road with easy access to Hwy. K-96 and a plethora of shopping and dining options in close proximity.
- Beautiful lake views with a covered outdoor patio.
- Updated finishes throughout.
- Building signage available.



Offered exclusively by:

Christi Royse, CCIM

316-292-3919 | croyse@weigand.com

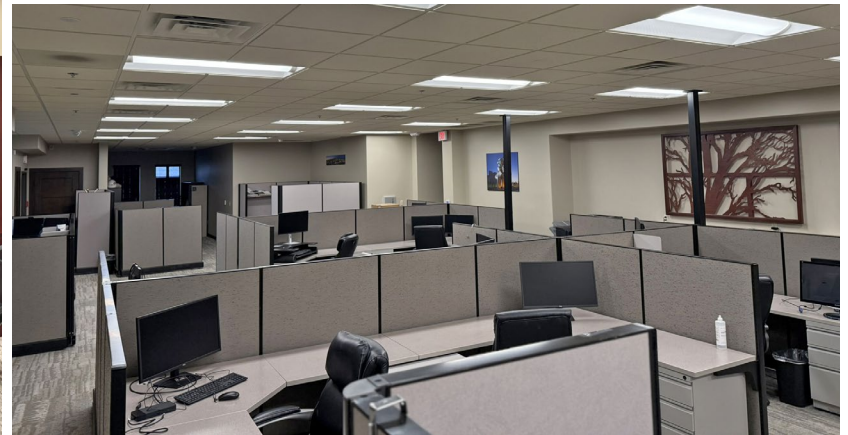
Whitney Vliet Ward

316-292-3900 | wward@weigand.com

NORTHEAST OFFICE SPACE

FOR LEASE 2121 N. WEBB ROAD, WICHITA, KS 67206

INTERIOR PHOTOS



Offered exclusively by:

Christi Royse, CCIM

316-292-3919 | croyse@weigand.com

Whitney Vliet Ward

316-292-3900 | wward@weigand.com

NORTHEAST OFFICE SPACE

FOR LEASE 2121 N. WEBB ROAD, WICHITA, KS 67206

CLOSE-UP AERIAL



Offered exclusively by:

Christi Royse, CCIM
316-292-3919 | croyse@weigand.com

Whitney Vliet Ward
316-292-3900 | wward@weigand.com

NORTHEAST OFFICE SPACE

FOR LEASE 2121 N. WEBB ROAD, WICHITA, KS 67206

AREA BUSINESSES WITHIN 1 MILE



Offered exclusively by:

Christi Royce, CCIM
316-292-3919 | croyse@weigand.com

Whitney Vliet Ward
316-292-3900 | wward@weigand.com