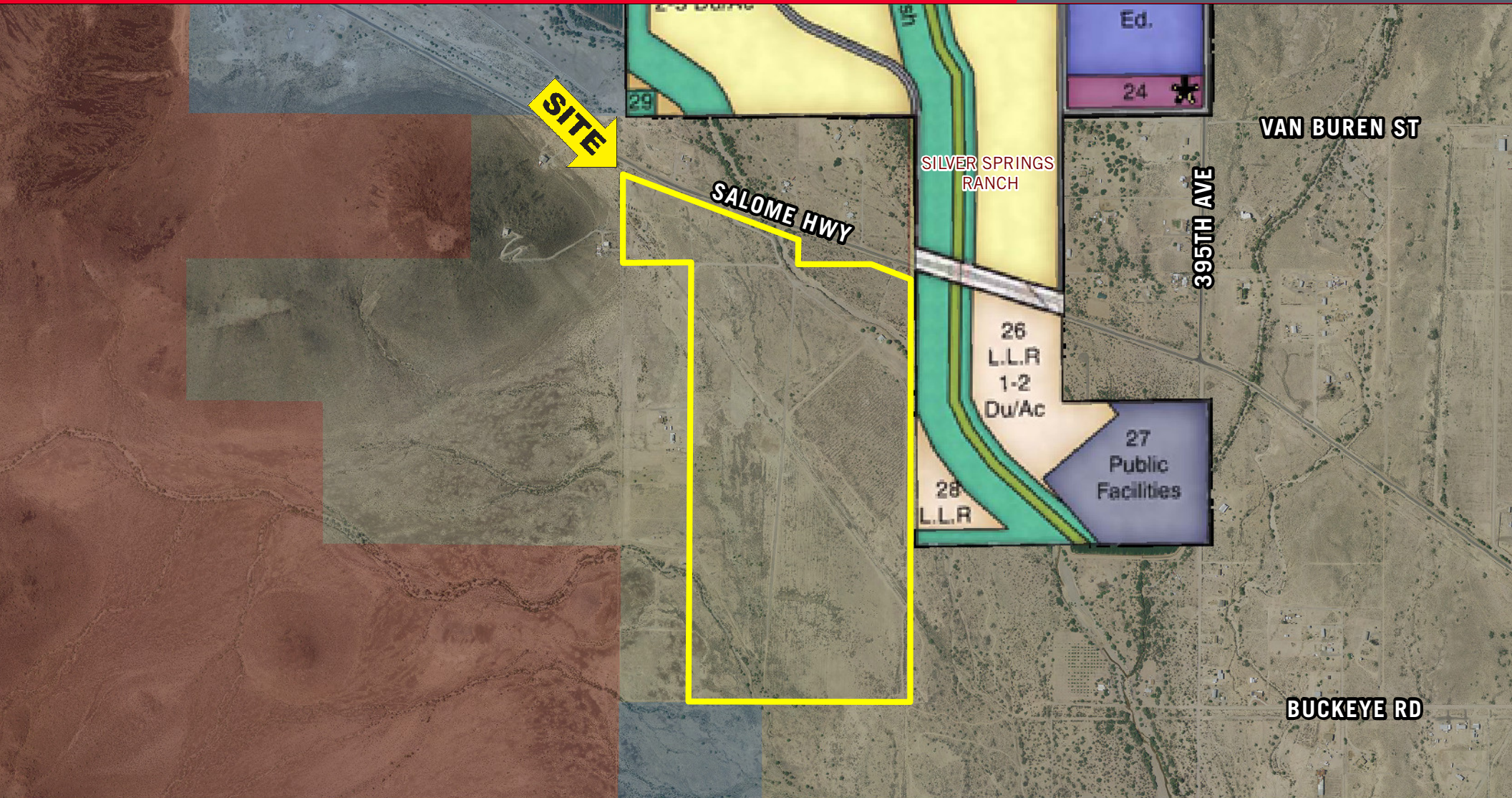


# For Sale: ±192 Acres

Salome Highway - West of 395th Avenue | Tonopah, Arizona



For more information, please contact:

**Paul Boyle**  
Executive Director  
602.224.4414  
Paul.Boyle@cushwake.com

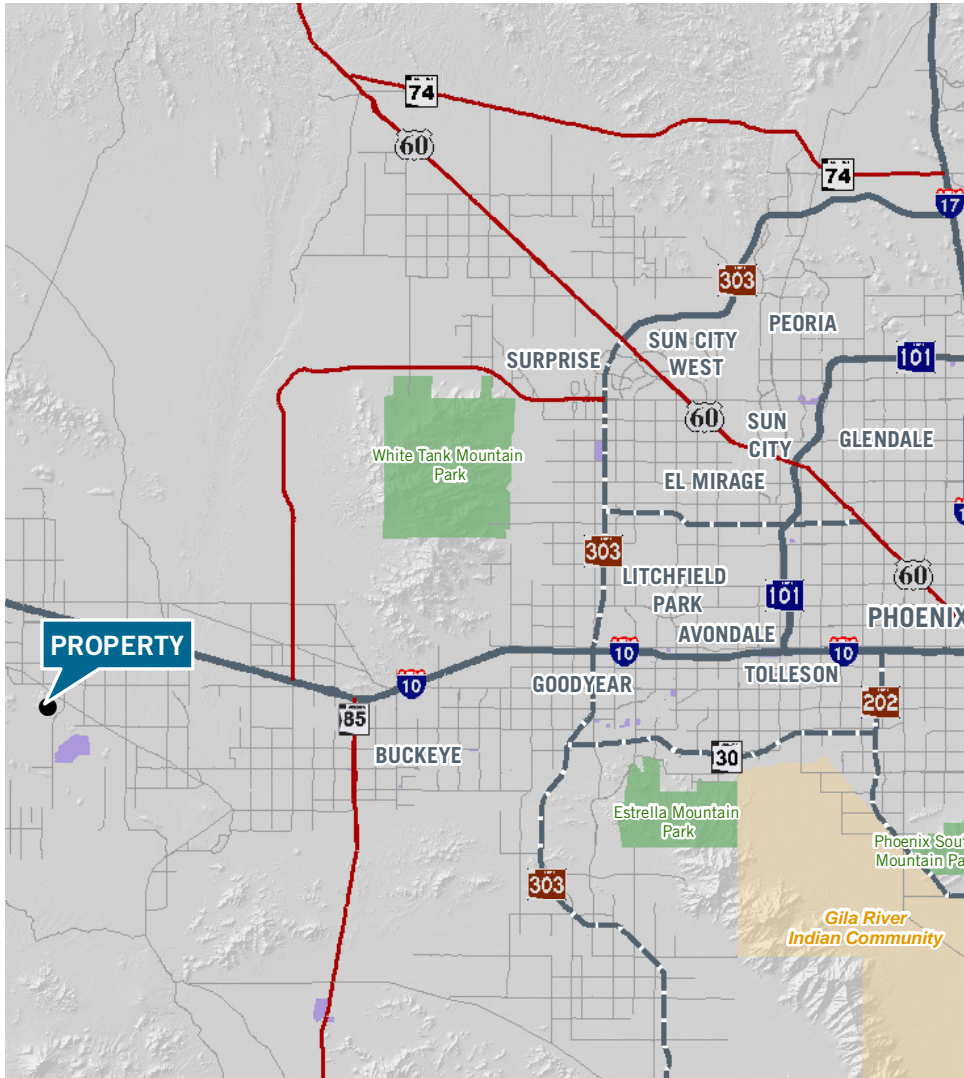
**Will French**  
Director  
602.224.4496  
Will.French@cushwake.com

**Rick Danis**  
Executive Director  
602.224.4405  
Rick.Danis@cushwake.com

2555 E. Camelback Rd, Suite 400  
Phoenix, Arizona 85016  
ph: 602.954.9000  
fx: 602.468.8588  
Cushman & Wakefield  
www.cushmanwakefield.com

# For Sale: ±192 Acres

Salome Highway - West of 395th Avenue | Tonopah, Arizona



LOCATION:	South side of Salome Highway, west of 395th Avenue Tonopah, Arizona
PARCEL #:	506-44-001C 506-44-014B 506-44-005D 506-44-014A 506-44-004Z 506-44-005B 506-44-005C
SIZE:	±192 Acres
ZONING:	RU-43, Maricopa County
UTILITIES:	Global Water is the future provider for water & sewer and APS is the future provider for power
PRICE:	\$653,000 or \$3,401/AC
OTHER INFO:	About 80 of the total 192 acres has grandfathered ground water rights

For more information, please contact:

**Paul Boyle**  
Executive Director  
602.224.4414  
Paul.Boyle@cushwake.com

**Will French**  
Director  
602.224.4496  
Will.French@cushwake.com

**Rick Danis**  
Executive Director  
602.224.4405  
Rick.Danis@cushwake.com

2555 E. Camelback Rd, Suite 400  
Phoenix, Arizona 85016  
ph: 602.954.9000  
fx: 602.468.8588

Cushman & Wakefield  
www.cushmanwakefield.com