



FOR LEASE



# VANCOUVERCENTER

## Retail Space Available for Lease

3,173 SF | Call Broker for Rate

**700 Washington Street, Suite 105, Vancouver, WA 98660**

- Located in the area commonly known as the “Superblock” site in the heart of Vancouver, Washington
- Featuring approximately 106,827 SF of Class-A office space and 30,000 SF of retail space on the ground floors with an open-air plaza and easy access to Esther Short Park
- Off-street parking is available in the three-level underground parking facility

### **WILLIAM AMORIN**

Associate Broker | Licensed in WA

**360-931-0584**

[william@capacitycommercial.com](mailto:william@capacitycommercial.com)

### **TAMARA J. FULLER, CCIM**

Senior Vice President | Licensed in WA & OR

**360-946-4832**

[tamara.fuller@capacitycommercial.com](mailto:tamara.fuller@capacitycommercial.com)

### **ERIC ANDERSON**

Senior Vice President | Licensed in WA

**360-946-4831**

[eric@capacitycommercial.com](mailto:eric@capacitycommercial.com)



PROPERTY SUMMARY



FOR LEASE

PROPERTY DETAILS

Address	700 Washington Street, Suite 105 Vancouver, WA 98660
Available Space	3,173 SF
Floor	1st
Use Type	Retail / Medical
Availability	Now
Lease Rate	\$30 psf MG + Electrical and Janitorial
Virtual Tour	<a href="#">CLICK HERE</a>

Location Features

- Located in downtown Vancouver, 700 Washington is highly visible from I-5 and has quick and easy access to I-5 & I-205
- Portland International Airport & Downtown Portland are located within 15 minutes of the property
- Easy access to the Clark County Courthouse, the offices of the City of Vancouver, area hotels, restaurants and shopping
- Public transportation is located at the Downtown Transit Center nearby

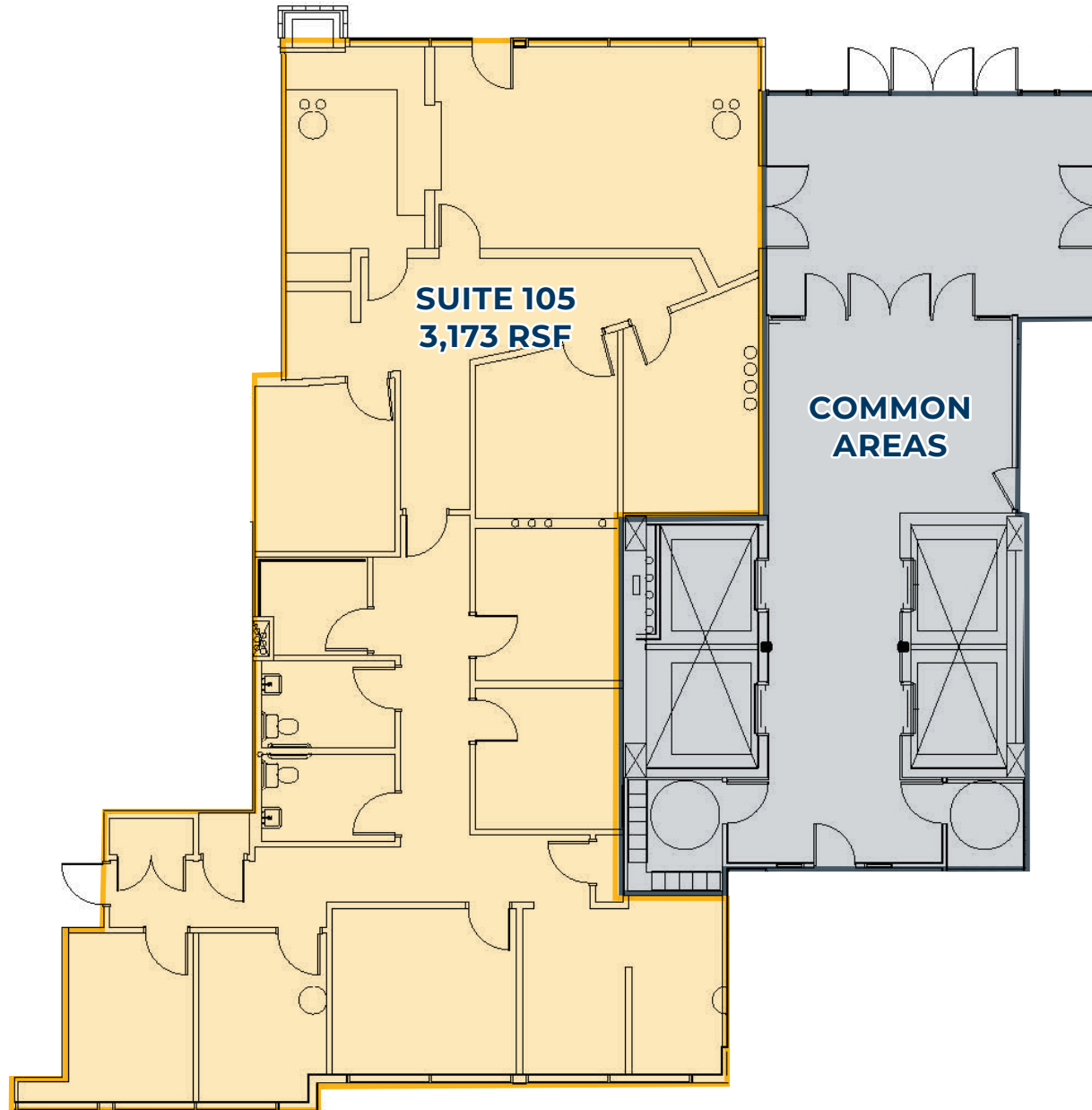
Nearby Highlights

- Brewed Cafe & Pub
- Breakside Brewery
- Compass Coffee
- Donnell's Bar
- Grays Restaurant & Bar
- Hilton
- Joe Brown's Cafe
- La Fiesta on Main
- Little Conejo
- Little Italy's Trattoria
- Mighty Bowl
- Regal City Center
- Starbucks
- Subway
- Thai Orchid
- The Smokin' Oak BBQ
- Vancouver Community Library
- Vata Salon & Spa Aveda
- Vancouver Waterfront



# FLOOR PLAN

## FLOOR PLAN





INTERIOR PHOTOS



Reception



Waiting Room



Bathroom



Hallway



Kitchenette



# AMENITIES



On-Site Gym



Lobby



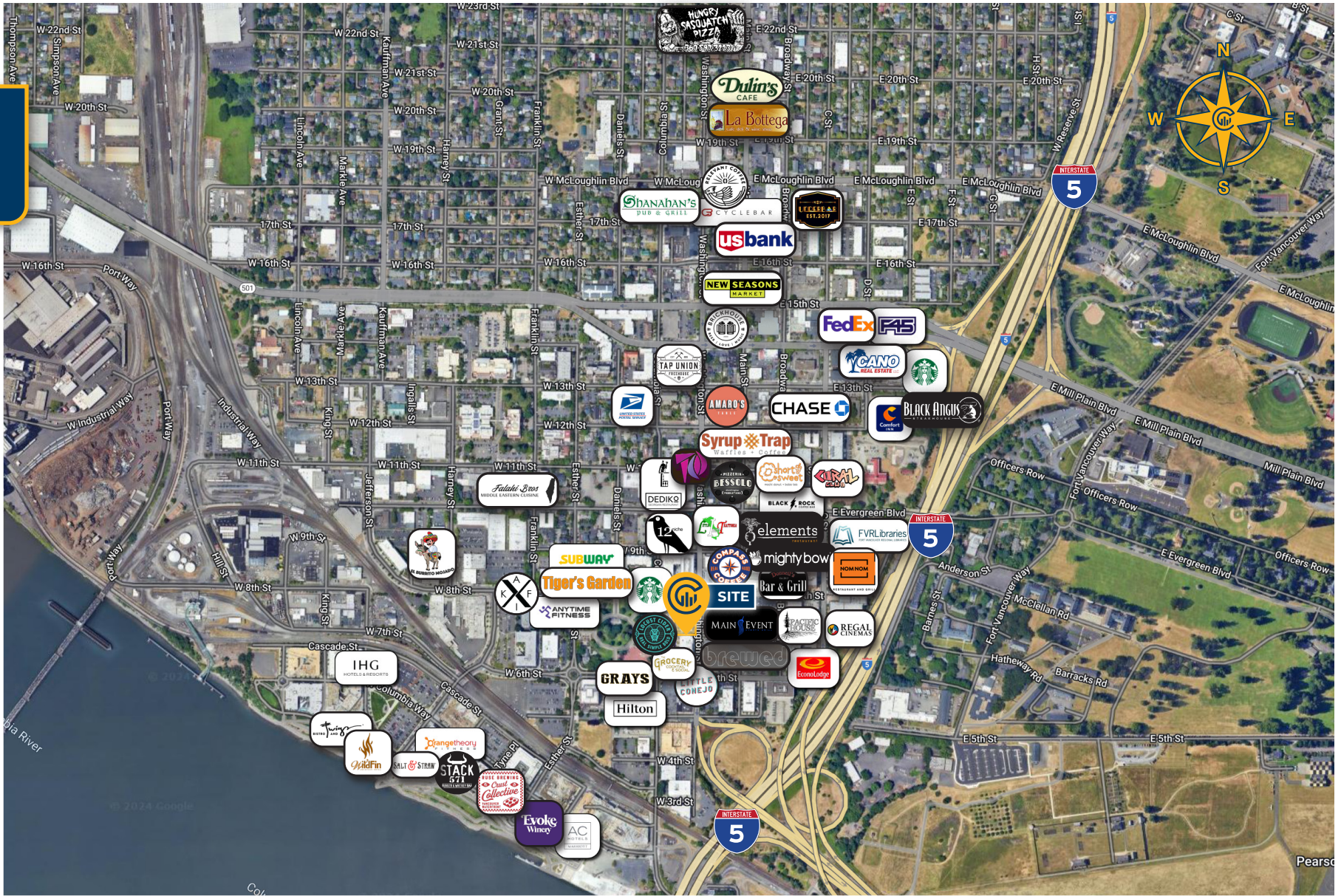
Esther Short Park



On-Site Gym



# LOCAL AERIAL MAP



\*Average Daily Traffic Volume | Traffic Counts are Provided by REGIS Online at SitesUSA.com ©2025 | Map data ©2025 Google Imagery ©2025, Airbus, CNES / Airbus, Maxar Technologies, Metro, Portland Oregon, Public Laboratory, State of Oregon, U.S. Geological Survey, USDA/FPAC/GEO

**WILLIAM AMORIN**  
Associate Broker | Licensed in WA  
**360-931-0584**  
william@capacitycommercial.com

**TAMARA J. FULLER, CCIM**  
Senior Vice President | Licensed in WA & OR  
**360-946-4832**  
tamara.fuller@capacitycommercial.com

**ERIC ANDERSON**  
Senior Vice President | Licensed in WA  
**360-946-4831**  
eric@capacitycommercial.com