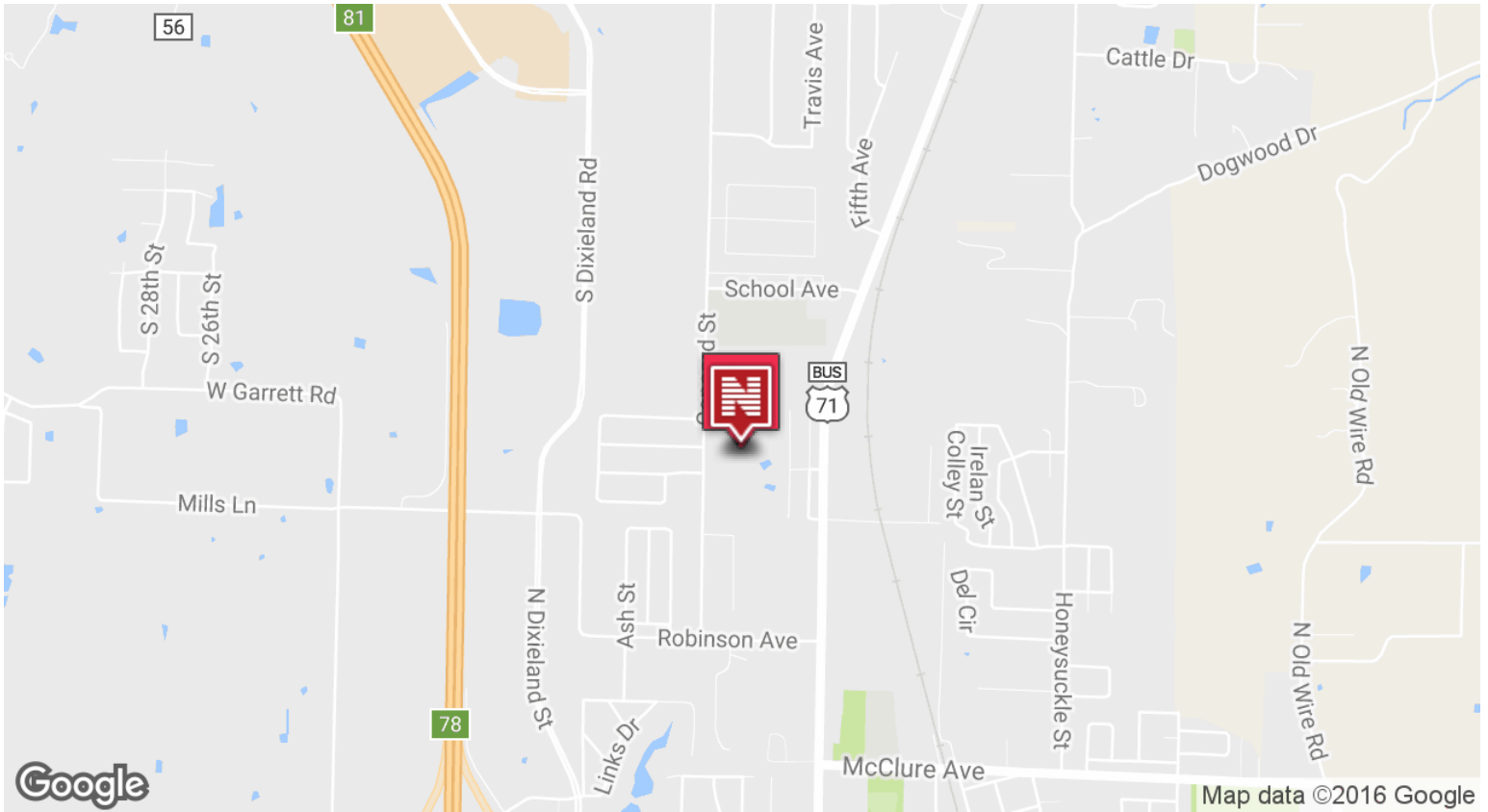




Property Snapshot

Sale Price \$756,925
Lot Size ± 23.29 ACRES

- Source Gas
- Swepeco Electric
- Lowell Water Utility
- Lowell Wastewater Utility



Details

Sale Price	\$756,925
Lot Size	± 23.29 Acres
APN #	12-00151-000
Cross Streets	Concord Street & Edgehill Avenue

Property Overview

± 23.29 acres of land on Concord in Lowell. Great site for single family residential development. Currently zoned R-A; R-D and MDR possible.

Property Highlights

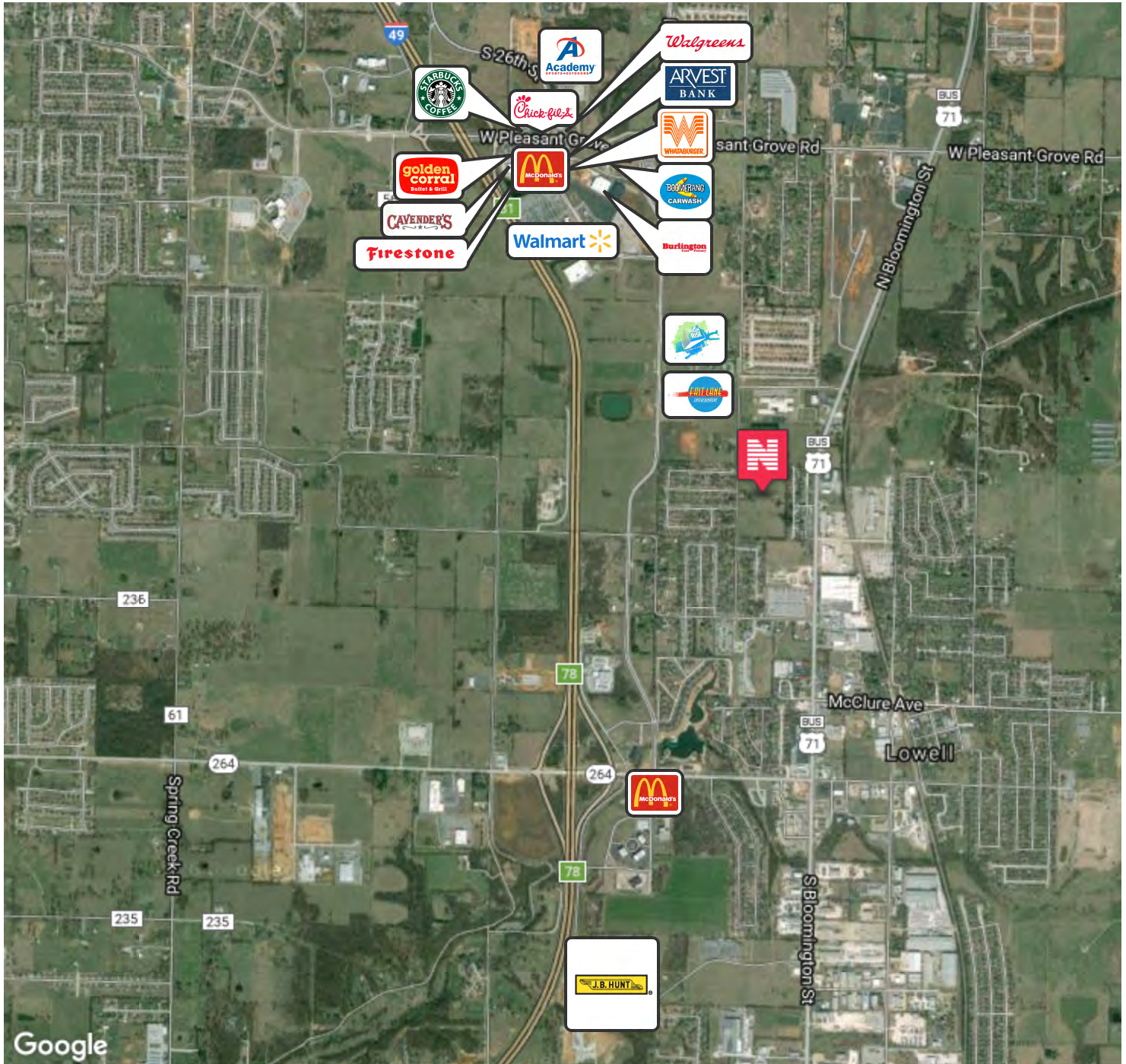
- +/- 952 SF Rental house on property
- Rogers Public School District
- Directly south of Elza R. Tucker Elementary

Paul Esterer Principal & Executive Managing Director **479.685.6612** pesterer@ngarkansas.com

Land For Sale



803 CONCORD ST., LOWELL, AR



Paul Esterer Principal & Executive Managing Director 479.685.6612 pesterer@ngarkansas.com

Newmark Grubb
Arkansas
www.ngarkansas.com

Newmark Grubb Arkansas represents the owner of the property represented herein. Although all information furnished regarding property for sale, rental, or financing is from sources deemed reliable, such information has not been verified and no express representation is made nor is any to be implied as to the accuracy thereof and it is submitted subject to errors, omissions, change of price, rental or other conditions, prior sale, lease or financing, or withdrawal without notice and to any special conditions imposed by our principal.

308 SW 24th Street, Suite 4, Bentonville, AR 72712 | Main: 479.271.6118