



5014 CLIO RD
FLINT, MI 48504

PROPERTY HIGHLIGHTS:

- Freestanding former Rite Aid
- 11,100 SF, 1.46 acres
- High exposure with unobstructed site line from all directions
- Directly across the street from Snipes, Citi Trends and many other national Tenants
- Property is in Receivership
- Hard corner of Clio Road & Pierson Road, Flint, MI
- Lease Rate - Contact Broker
- Sale Price - Contact Broker

The information provided herein along with any attachment(s) was obtained from sources believed to be reliable, however, Friedman Real Estate makes no guarantees, warranties, or representations as to the completeness or accuracy of such information and legal counsel is advised. All information provided is subject to verification and no liability for reliance on such information or errors or omissions is assumed. The presentation of this property is submitted subject to errors, omissions, change of price or conditions, prior sale or lease, or withdrawal without notice. Copyright © 2025 Friedman Real Estate. All rights reserved.

FOR MORE INFORMATION **PLEASE CONTACT:**



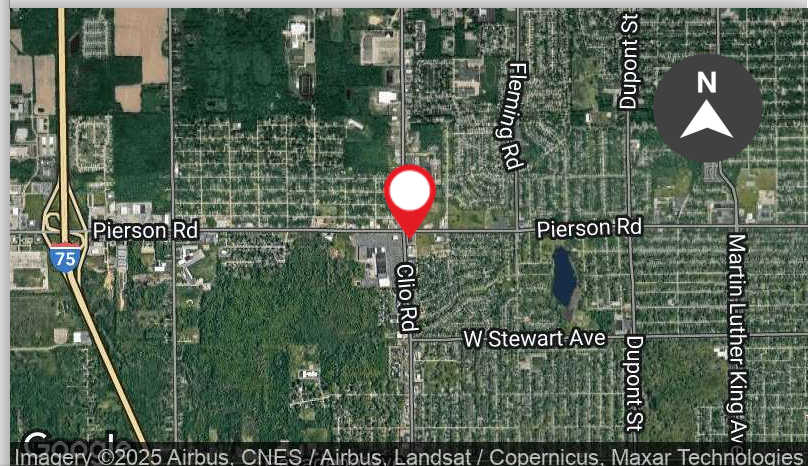
ALAN STERN
alan.stern@freg.com



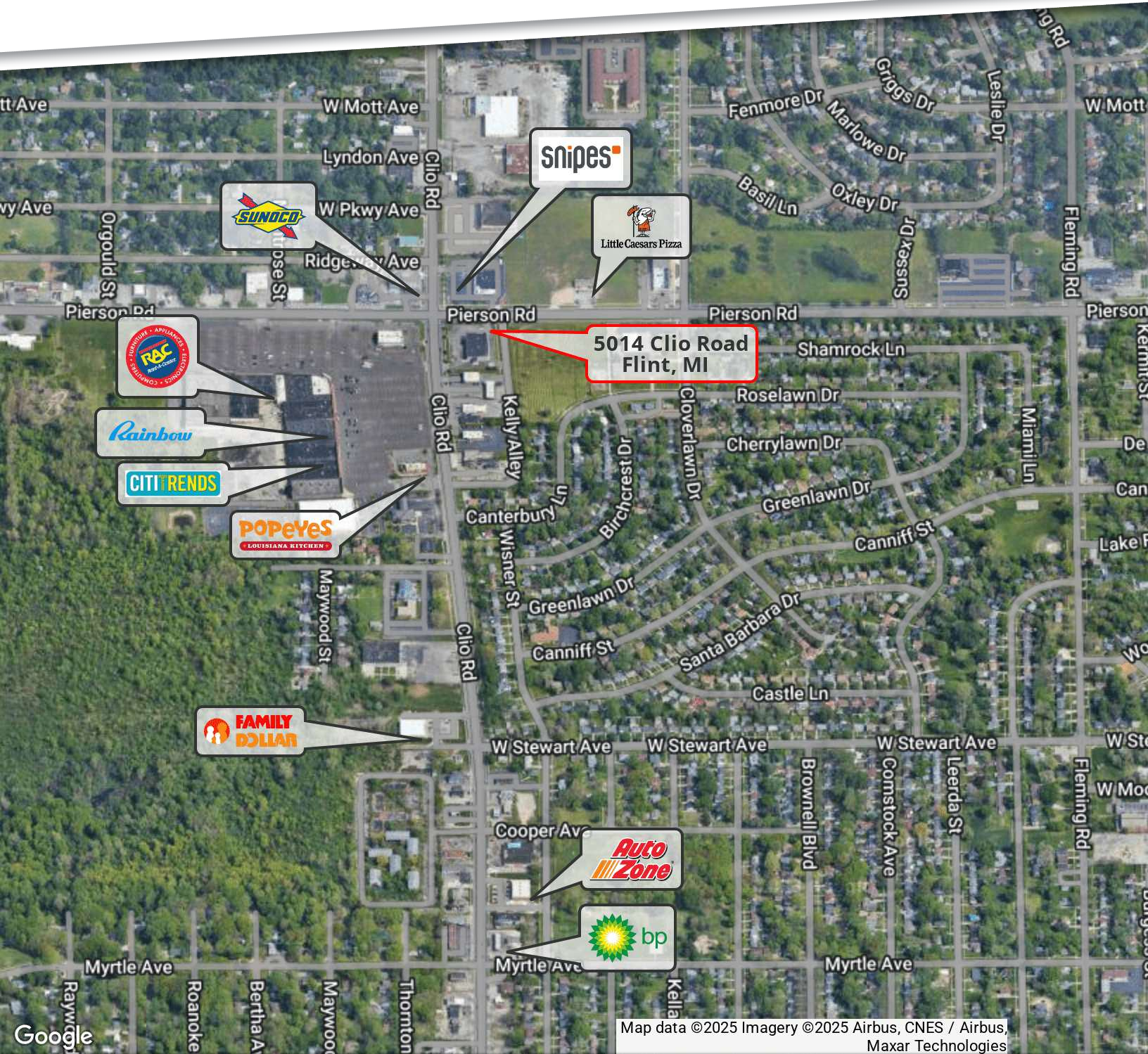
RICHARD DEPTULA
richard.deptula@freg.com

248.848.4119

eCODE 156



5014 CLIO RD RETAILER MAP



Map data ©2025 Imagery ©2025 Airbus, CNES / Airbus, Maxar Technologies

5014 CLIO RD
RETAILER MAP



**5014 Clio Road
Flint, MI**

DEMOGRAPHICS	1 MILE	3 MILES	5 MILES
Total Households	3,410	19,635	45,793
Total Population	8,310	46,865	109,634
Average HH Income	\$41,841	\$46,831	\$53,534

Map data ©2025 Imagery ©2025 Airbus, Maxar Technologies

5014 CLIO RD
PROPERTY PHOTOS

