

PRIME RETAIL SPACE AVAILABLE

for lease

MEDICAL CENTER PARKWAY / MURFREESBORO, TN



OVERVIEW

ADDRESS 2222 Medical Center Parkway
Murfreesboro, TN 37129

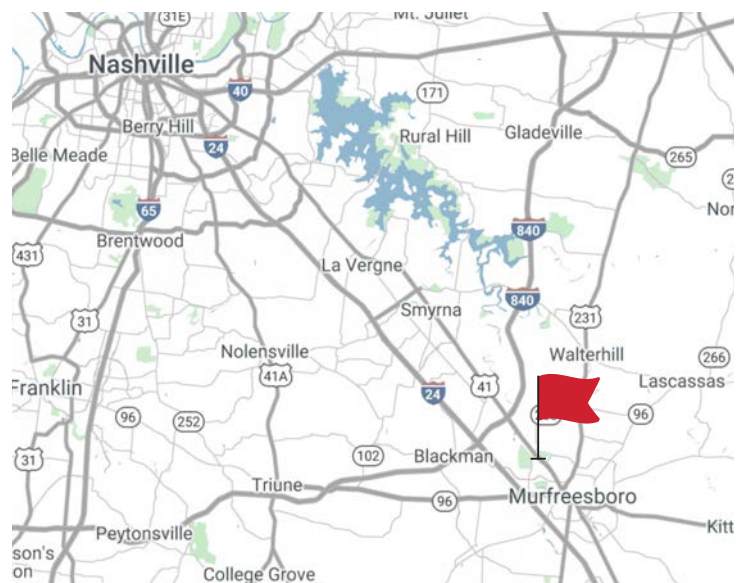
SPACE 2,422 SF - End Cap with Patio

RATE \$42 NNN

HIGHLIGHTS

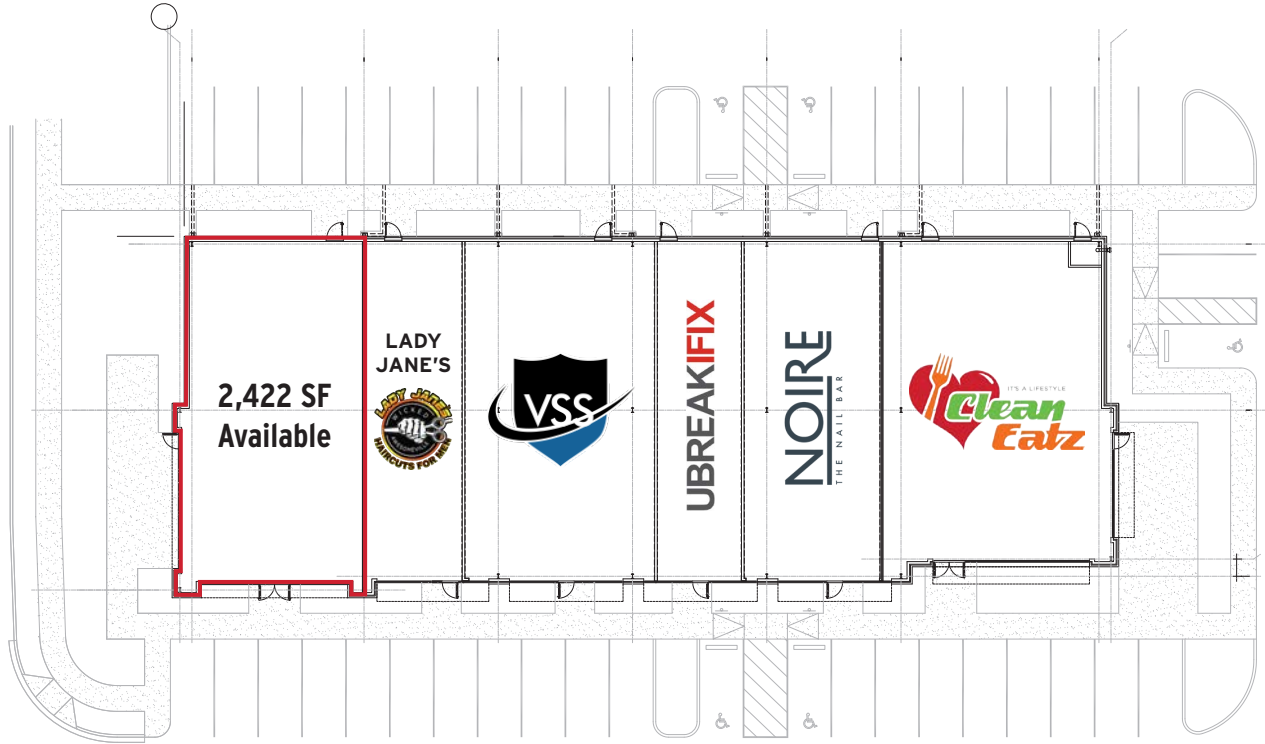
- Rare second generation restaurant space
- Located in the fastest-growing section of Medical Center Parkway with 5 hotels, multi-family, and additional retail and restaurants planned
- Tenants include: Clean Eatz, Lady Jane's Haircuts, Valley Storm Shelters, UBreakIFix, and Noire Nail Bar

LOCATION



for more information, contact

AVAILABLE SPACES



DEMOGRAPHICS

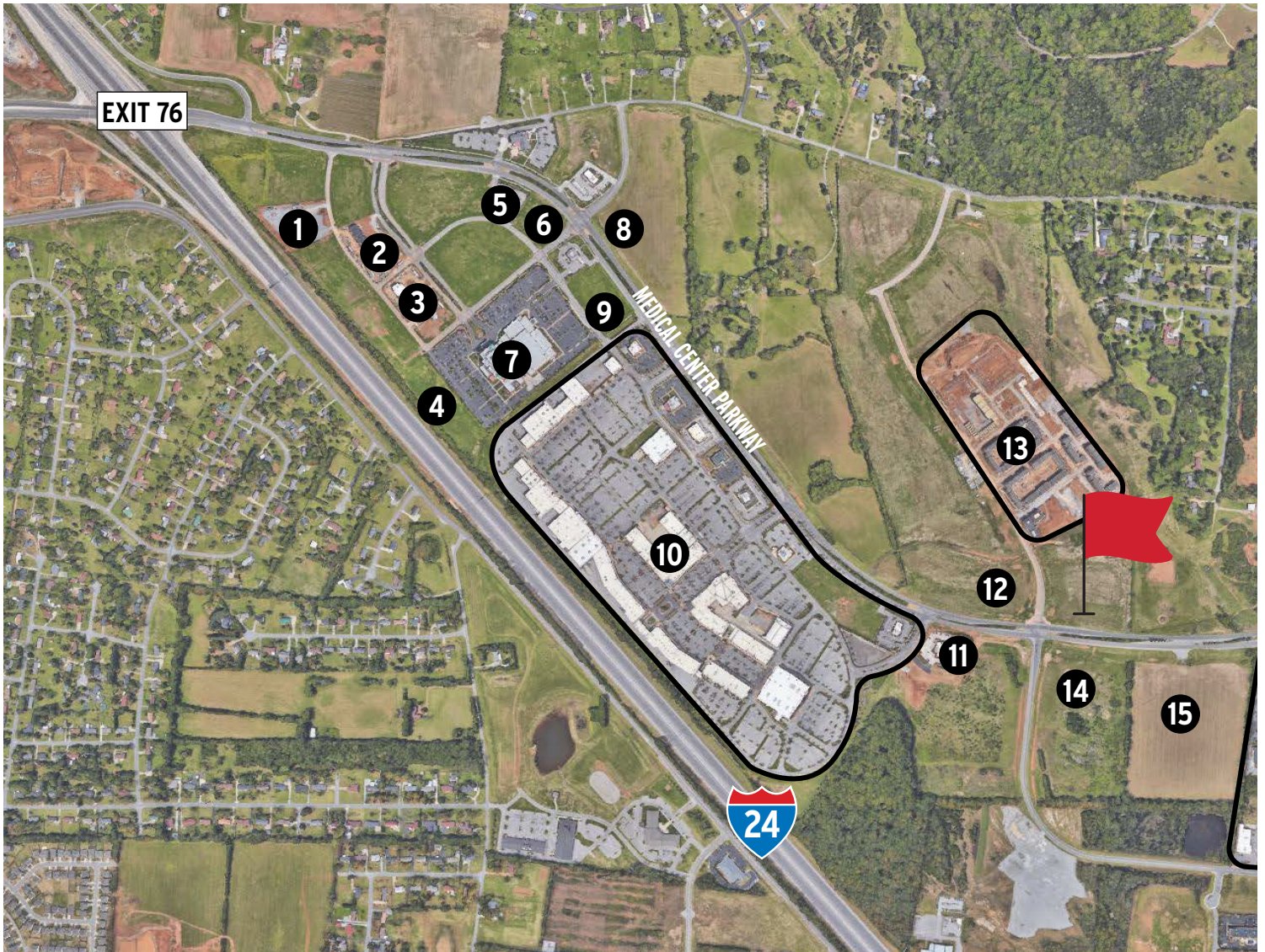
	1 Mile	3 Mile	5 Mile
Population	6,547	63,561	159,476
<i>Proj. 2028</i>	7,349	69,026	172,651
Median Age	36.3	35.5	34.2
Households	2,253	24,547	59,488
Avg. Household Income	\$72,244	\$85,596	\$86,592

AVERAGE DAILY TRAFFIC

28,116 CPD at Medical Center Parkway and Robert Rose Drive (2022)

for more information, contact

POINTS OF INTEREST



- | | | | |
|---|------------------------------------|----|--|
| 1 | HOLIDAY INN | 9 | CHICKEN SALAD CHICK |
| 2 | RESIDENCE INN | 10 | THE AVENUE: Belk, Barnes & Noble, Best Buy, Color Me Mine, Dick's Sporting Goods, Petco, Lululemon, Newk's, Starbucks, Ulta, Bar Louie, BJ's, Culver's |
| 3 | HILTON GARDEN INN | 11 | MCALISTER'S DELI |
| 4 | COURTYARD BY MARRIOTT | 12 | BLAZE PIZZA, HOTWORX, CORELIFE EATERY |
| 5 | SUBWAY | 13 | LC HENLEY STATION & THE GOAT |
| 6 | JONATHAN'S GRILL | 14 | BAD DADDY'S BURGER BAR, CYCLEBAR, SLEEP NUMBER |
| 7 | EMBASSY SUITES & CONFERENCE CENTER | 15 | KRISPY KREME, PINNACLE FINANCIAL PARTNERS, HYATT PLACE |
| 8 | MCDONALD'S | | |

for more information, contact