

FOR SALE

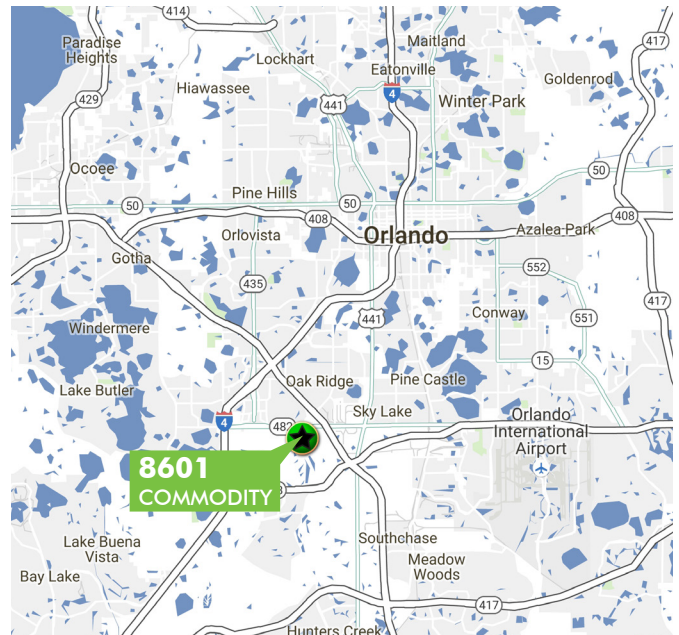
8601 COMMODITY CIRCLE

ORLANDO, FL 32819



PROPERTY FEATURES

- + Two-story, 9,957 SF office building situated on 1 acre
- + Recently constructed (2008)
- + Unique design, ample ceiling heights and upgraded finishes throughout
- + Located across from Southpark, near numerous amenities
- + Parking 4.0/1,000 RSF (40 spaces)
- + Ideal for creative, design, technology or financial services users



www.cbre.com/orlando

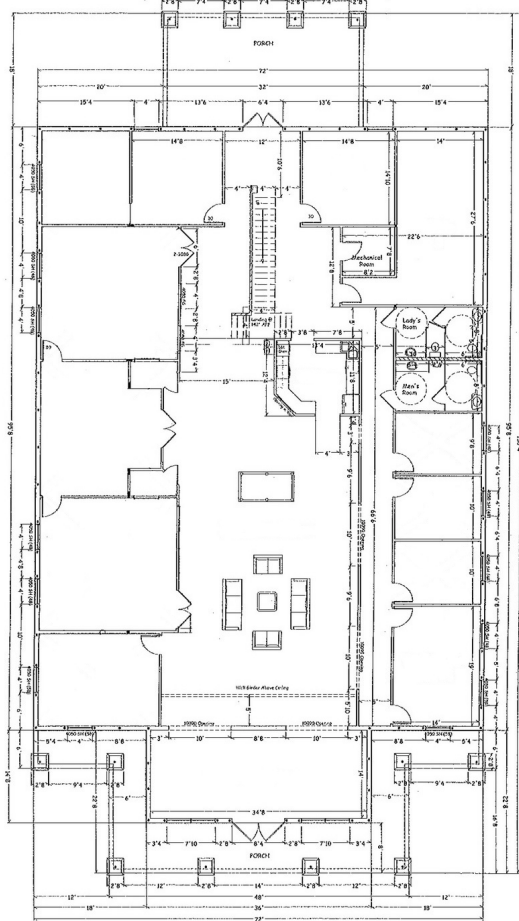
CBRE

FOR SALE OFFICE BUILDING

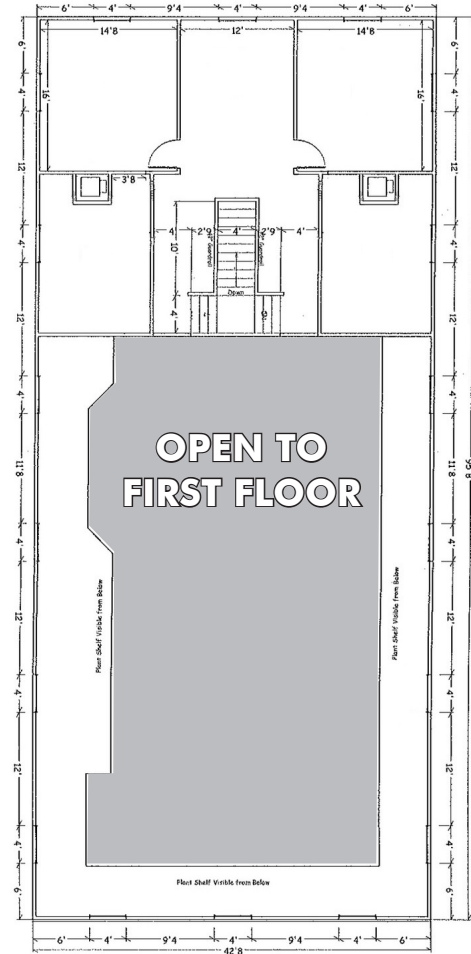
8601
COMMODITY CIRCLE
Orlando, FL 32819



FIRST FLOOR

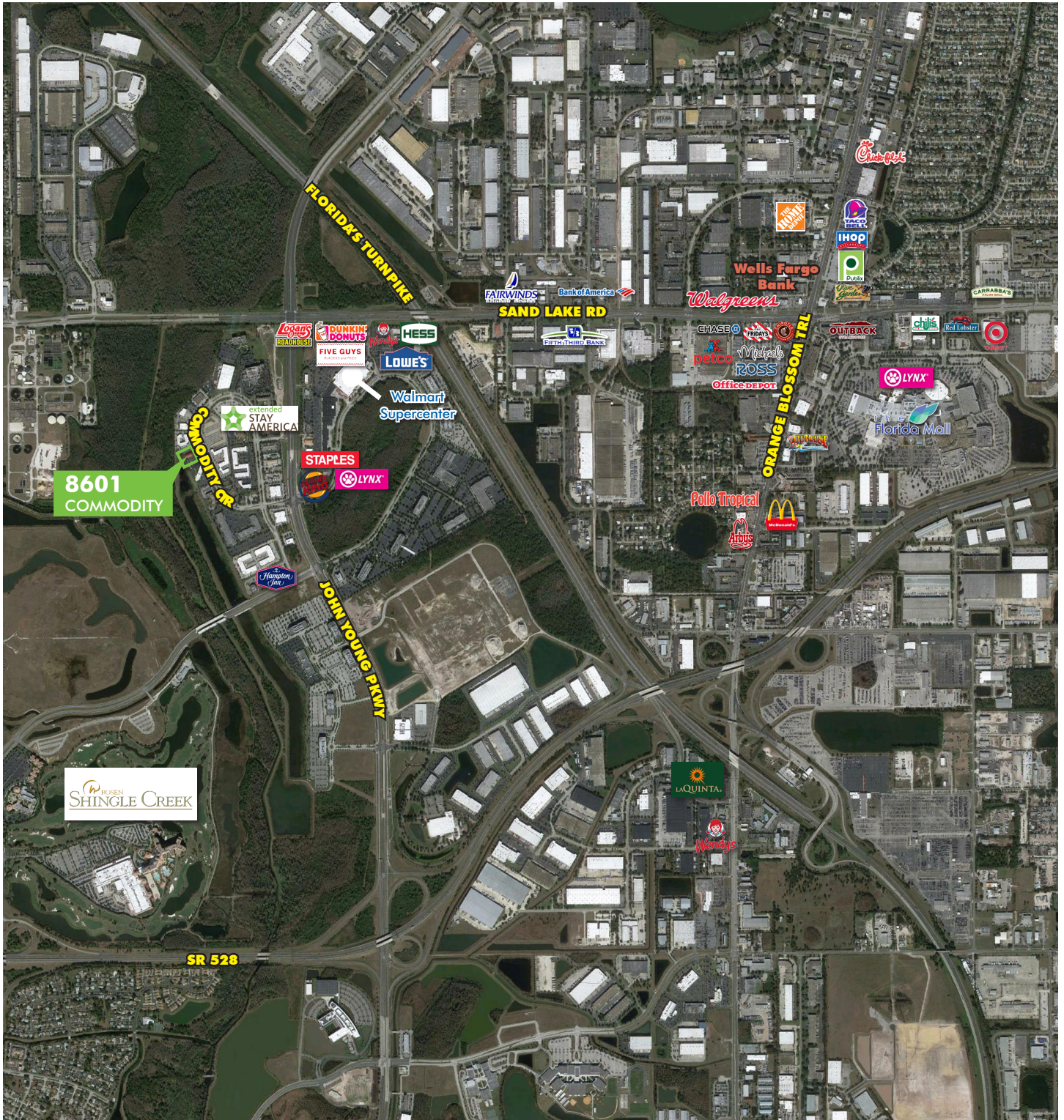


SECOND FLOOR



FOR SALE OFFICE BUILDING

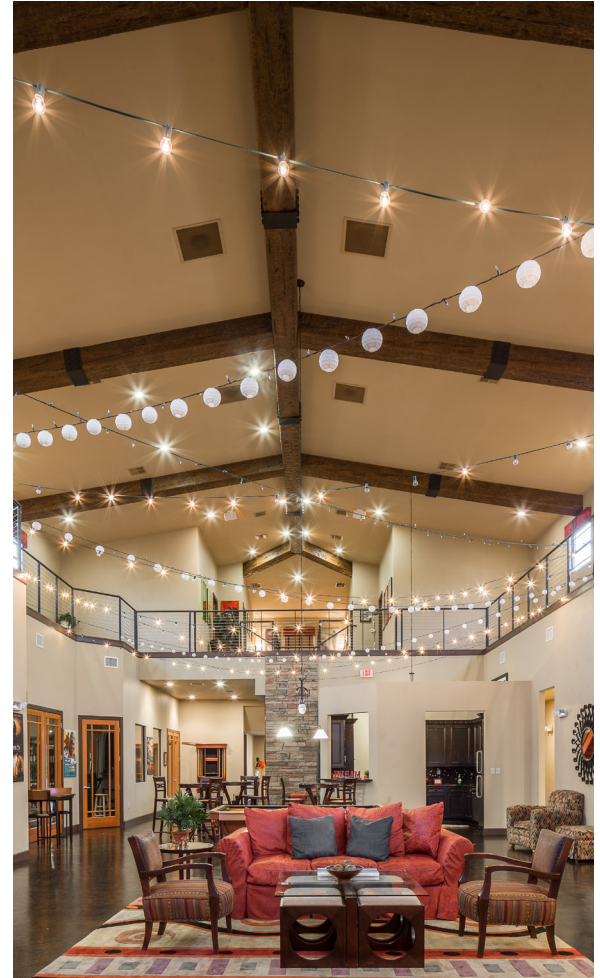
8601
COMMODITY CIRCLE
Orlando, FL 32819



FOR SALE OFFICE BUILDING

8601
COMMODITY CIRCLE
Orlando, FL 32819

2016 ESTIMATED DEMOGRAPHICS	1 MILE	3 MILES	5 MILES
POPULATION:	480	48,480	190,275
HOUSEHOLDS:	149	17,091	69,364
AVERAGE HOUSEHOLD INCOME:	\$47,528	\$50,158	\$63,123
MEDIAN HOUSEHOLD INCOME:	\$38,973	\$38,016	\$42,894
BUSINESSES:	382	5,529	11,421
EMPLOYEES:	8,130	97,730	181,048



CONTACT US

MICAH STRADER

First Vice President
+1 407 404 5021
micah.strader@cbre.com

TOM RICH

Associate
+1 407 404 5028
tom.rich@cbre.com

CBRE, Inc. | Licensed Real Estate Broker
200 S. Orange Avenue, Suite 2100 | Orlando, FL 32801

© 2017 CBRE, Inc. All rights reserved. This information has been obtained from sources believed reliable, but has not been verified for accuracy or completeness. Any projections, opinions, or estimates are subject to uncertainty. The information may not represent the current or future performance of the property. You and your advisors should conduct a careful, independent investigation of the property and verify all information. **Any reliance on this information is solely at your own risk.** CBRE and the CBRE logo are service marks of CBRE, Inc. and/or its affiliated or related companies in the United States and other countries. All other marks displayed on this document are the property of their respective owners. Photos herein are the property of their respective owners and use of these images without the express written consent of the owner is prohibited.

www.cbre.com/orlando

CBRE