



MASON'S EDGE MANASSAS, VIRGINIA WRIGHT REALTY
ROBERT KEARNEY, ARCHITECT ACKERMAN DESIGN STUDIO

Information contained above is deemed but not guaranteed to be accurate. Lease rates, sale price and availability is subject to change without notice. 2/5/2009

Address: Mason's Edge
8819 Wellington Road
Manassas, Virginia

Directions: I-66 to RT 234 South (Bypass). Left on Wellington Road. At intersection of Wellington Station Road for George Mason University.

Total Area: **8 acres of land**

Utilities: All utilities available, including four fiber sources on site. Redundant Electrical.

FAR: .5

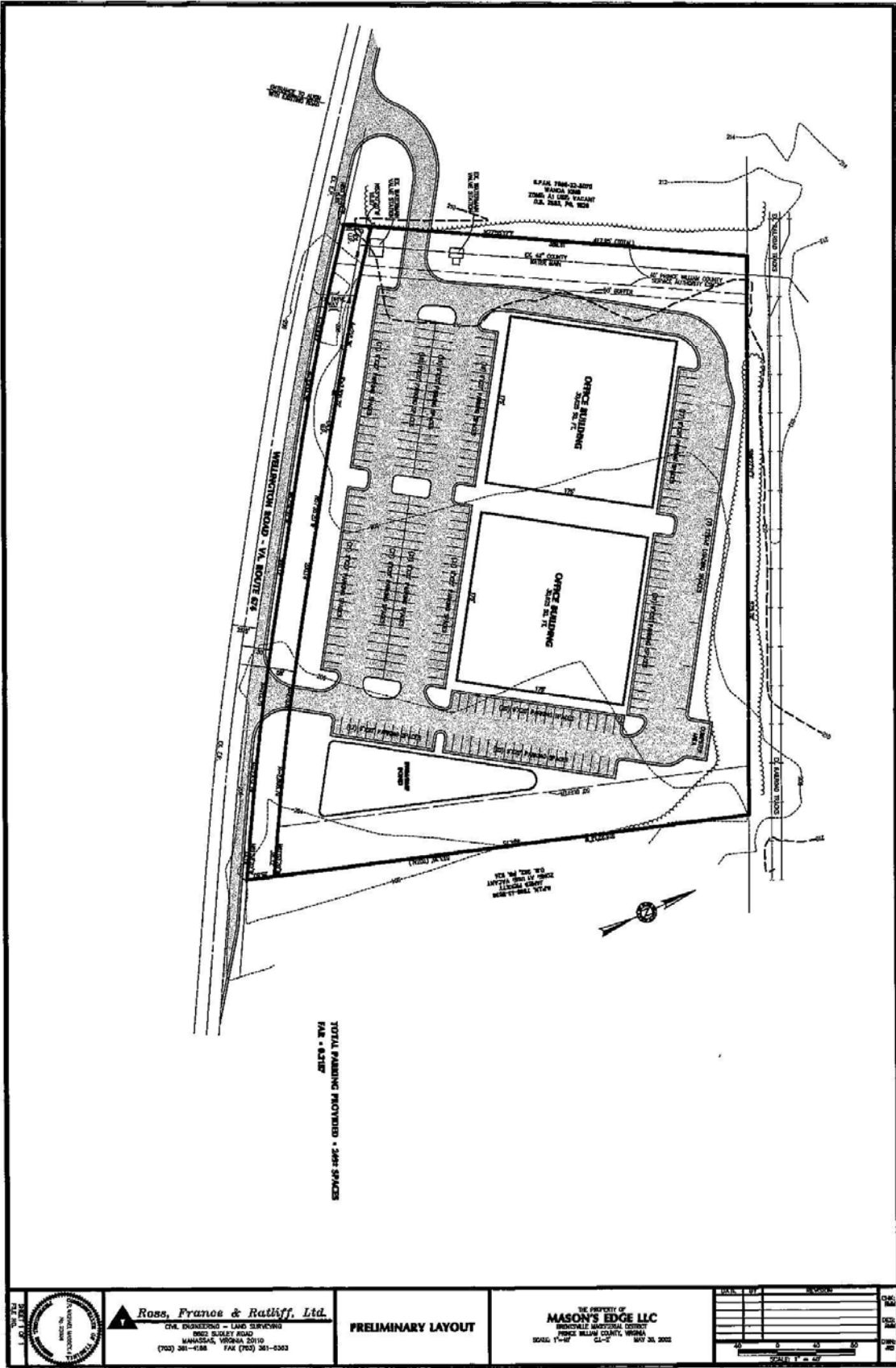
Price: \$5.00 per square foot (\$1,742,400)

Zoning: 6 Acres M-2: Light Industrial, 2 Acres: A-1 Agricultural

Comments: **Site Plan Complete.**
Potential Data Center Site

Sales Agent: Edward B. Wright, III
Wright Realty, Inc. (703) 368-8136
www.wright-realty.com

Disclosure: Agent/Owner



Information contained above is deemed but not guaranteed to be accurate. Lease rates, sale price and availability is subject to change without notice. 2/5/2009