

Lexington Park Professional Office Center

Adjacent to HCA Lake Monroe Hospital

1000 Lexington Green
Sanford, FL 32771

1 Pad Site for Build-to-Suit Lease



Property Information

Pad #12 - 800 Lexington Green Parcel

Key Features

- + Build Ready for freestanding building | Permit Ready
- + Zoned GC-2 (Office or Medical)
- + Pad for Building Size is **3,000 SF** | Divisible
- + Parking: 5 per 1,000 SF
- + Grey Shell Delivery scheduled in Dec. 2025
- + **Lease Rate \$25 NNN** | Term and TI Allowance are Negotiable.

Leased

Pad #13 - 1000 Lexington Green Parcel

Key Features

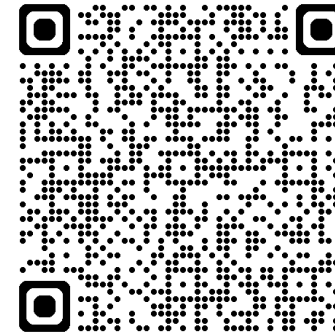
- + Build Ready for freestanding building | Permit Ready
- + Zoned GC-2 (Office or Medical)
- + Pad for Building Size is **3,600 SF** | Divisible
- + Parking: 5 per 1,000 SF
- + Grey Shell Delivery scheduled in Dec. 2025
- + **Lease Rate \$25 NNN** | Term and TI Allowance are Negotiable.



Build to Lease



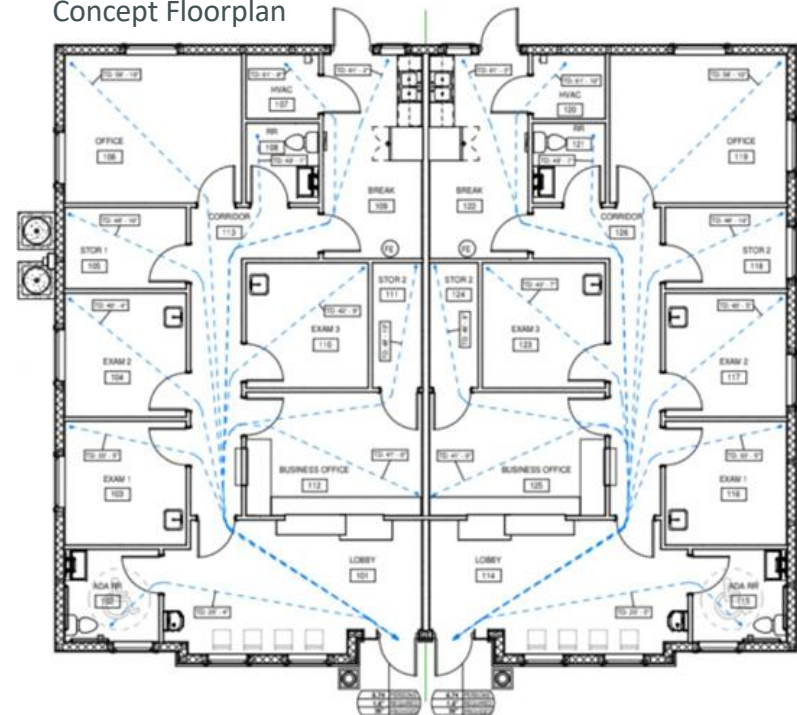
Ariel View



Contact:

Jacob Stephens
Commercial Services
Florida Foundation Realty, LLC
239 784 7116 | jake@ffrealty.net

Concept Floorplan



This information has been obtained from sources believed reliable but has not been verified for accuracy or completeness. Florida Foundation Realty, LLC makes no guarantee, representation or warranty and accepts no responsibility or liability as to the accuracy, completeness, or reliability of the information contained herein. You should conduct a careful, independent investigation of the property and verify all information. Any reliance on this information is solely at your own risk. All other marks displayed on this document are the property of their respective owners, and the use of such marks does not imply any affiliation. Photos herein are the property of their respective owners.