

Fremont Village Square

3601 Fremont Avenue N, Seattle, WA

1,850 RSF to 3,220 RSF Furnished
Move-In Ready Office Suite



Fremont Village Square

3601 Fremont Avenue N, Seattle, WA 98103

- Located in the heart of Fremont, “Center of the Universe,” on a prominent corner two blocks north of Fremont Bridge
- Mixed use office and retail building
- Available on-site covered parking stalls
- Easy access to Hwy 99 and downtown Seattle
- Central location to Seattle’s major employers

For more information, contact:

Wyk Parker

+1 206 332 1484 • wparker@nai-psp.com

Janet Backus

+1 206 332 1495 • jbackus@nai-psp.com



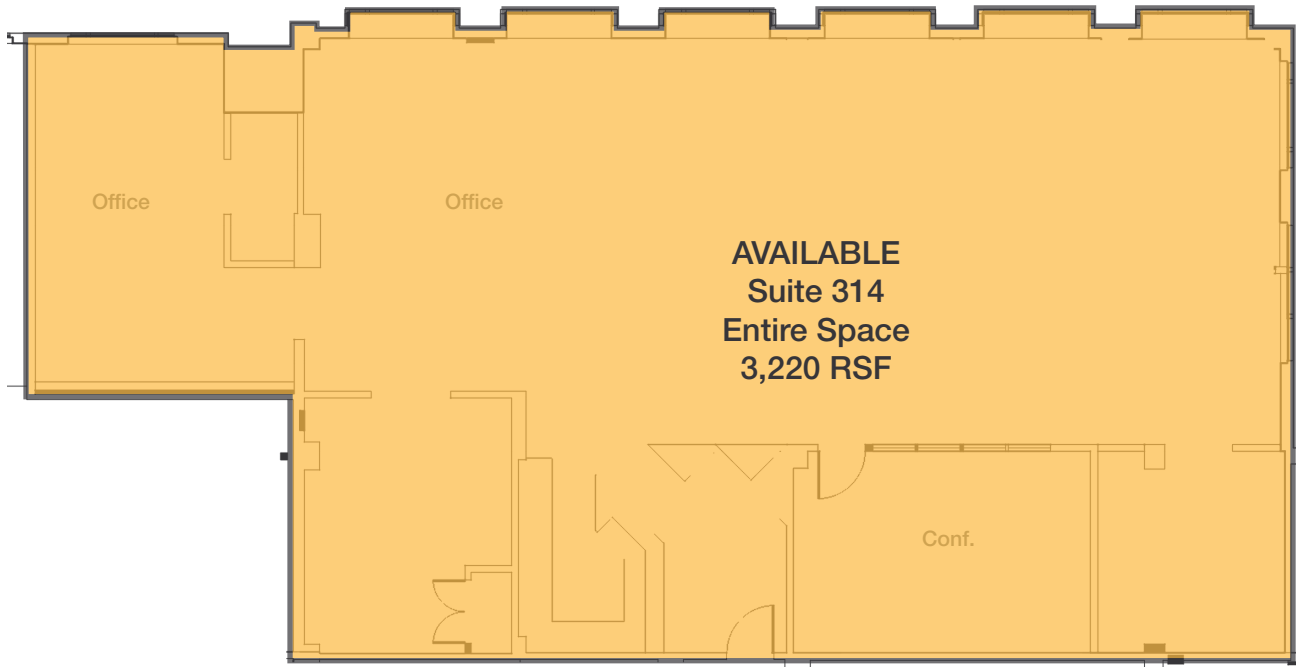
1700 Seventh Avenue Suite 2050
Seattle, Washington 98101
+1 206 332 1466
nai-psp.com

Fremont Village Square

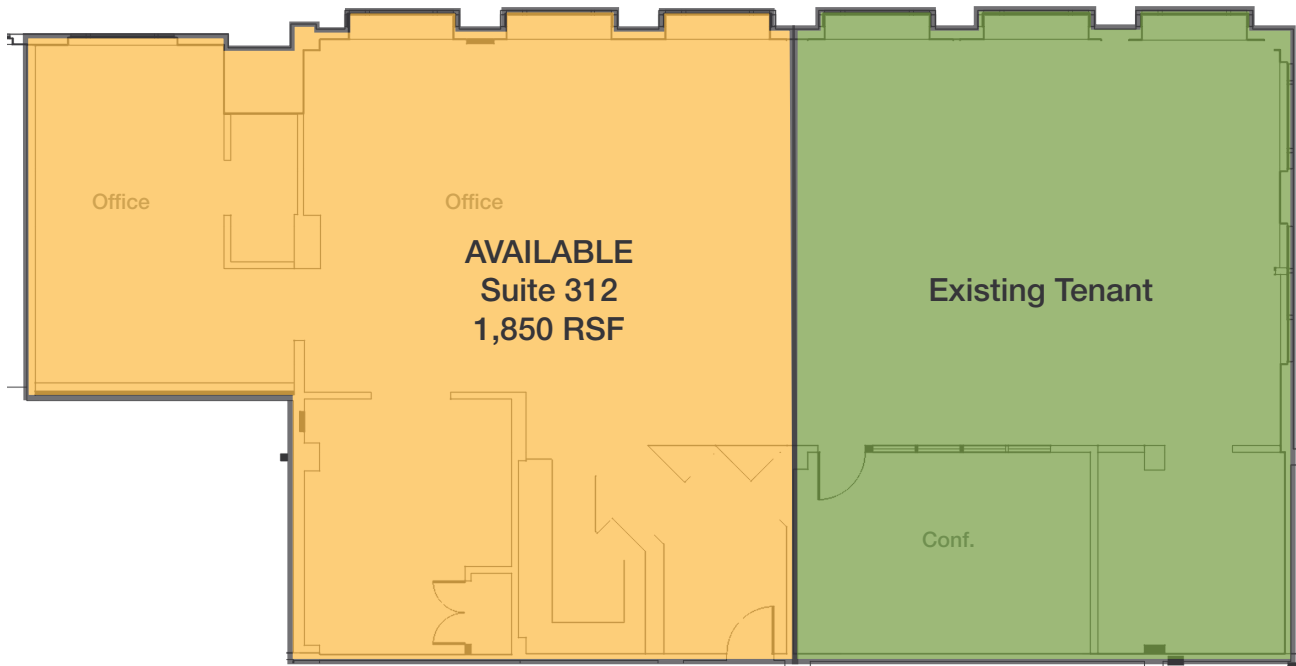
3601 Fremont Avenue N, Seattle, WA

Office Space Options

Suite 314



Suite 312 - demised from Suite 314



Fremont Village Square

3601 Fremont Avenue N, Seattle, WA

Photos



1700 Seventh Avenue Suite 2050
Seattle, Washington 98101
+1 206 332 1466
nai-psp.com

THE INFORMATION CONTAINED HEREIN HAS BEEN GIVEN TO US BY THE OWNER OF THE PROPERTY OR OTHER SOURCES WE DEEM RELIABLE, WE HAVE NO REASON TO DOUBT ITS ACCURACY, BUT WE DO NOT GUARANTEE IT. ALL INFORMATION SHOULD BE VERIFIED PRIOR TO PURCHASE OR LEASE. FLYERS\SEATTLE\FREMONT VILLAGE SQUARE

Fremont Village Square

3601 Fremont Avenue N, Seattle, WA

Lake Union and Fremont



1700 Seventh Avenue Suite 2050
Seattle, Washington 98101
+1 206 332 1466

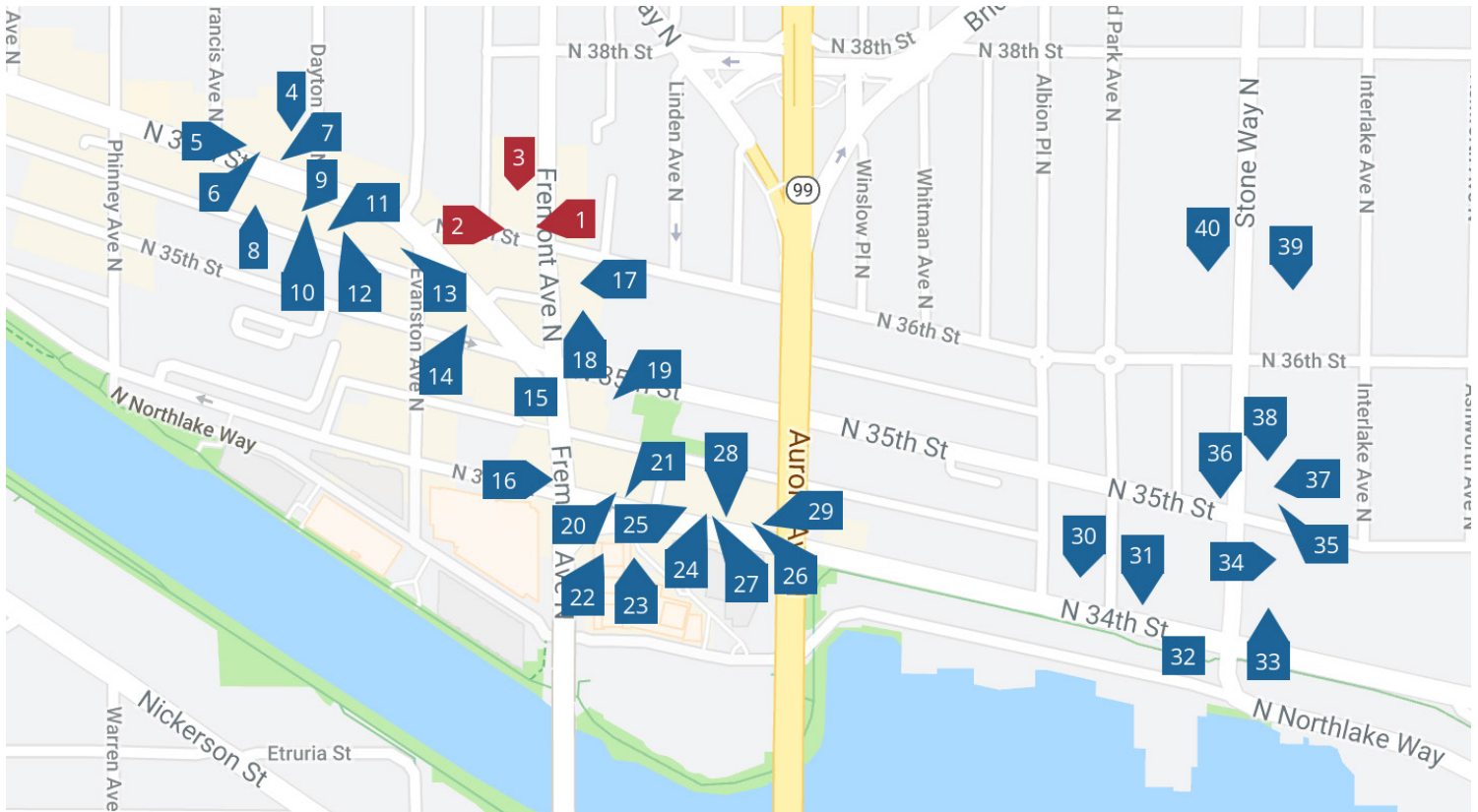
nai-psp.com

THE INFORMATION CONTAINED HEREIN HAS BEEN GIVEN TO US BY THE OWNER OF THE PROPERTY OR OTHER SOURCES WE DEEM RELIABLE, WE HAVE NO REASON TO DOUBT ITS ACCURACY, BUT WE DO NOT GUARANTEE IT. ALL INFORMATION SHOULD BE VERIFIED PRIOR TO PURCHASE OR LEASE. FLYERS\SEATTLE\FREMONT VILLAGE SQUARE

Fremont Village Square

3601 Fremont Avenue N, Seattle, WA

Fremont Restaurants



Fremont Village Square

- 1. Shawn O'Donnell's Pub
- 2. 19 Gold
- 3. Galaxy Rune

Fremont Village Square

- 4. The BackDoor
- 5. Caffe Ladro
- 6. Ballroom
- 7. Norm's Eatery & Ale House
- 8. Fremont Coffee Company
- 9. Kwanjai Thai Cuisine
- 10. Qazi's Indian Curry House
- 11. Nuna Ramen
- 12. Bar House

13. Red Star Taco Bar

14. Triangle Spirits

15. Jai Thai

16. Starbucks

17. Chiso Sushi & Izakaya

18. Flying Apron

19. Agrodolce

20. Eve Fremont

21. Schilling Cider House

22. Yellow Dot Cafe

23. Blue Moon Burgers

24. Verve Bowls

25. The Masonry Fremont

26. Cafe Turko

27. Just Poke

28. Evergreens Salad

29. Milstead & Co.

30. Fremont Brewing Company

31. Fremont Dock Sports Bar & Grill

32. Solsticio

33. MiiR Flagship

34. Thackeray Cafe & Bar

35. The Whale Wins

36. Pacific Inn Pub

37. Joule

38. Stone Way Cafe

39. RoRo BBQ

40. Manolin



1700 Seventh Avenue Suite 2050
Seattle, Washington 98101
+1 206 332 1466

nai-psp.com

Fremont Village Square

3601 Fremont Avenue N, Seattle, WA

Top Employers



1700 Seventh Avenue Suite 2050
Seattle, Washington 98101
+1 206 332 1466
nai-psp.com

THE INFORMATION CONTAINED HEREIN HAS BEEN GIVEN TO US BY THE OWNER OF THE PROPERTY OR OTHER SOURCES WE DEEM RELIABLE, WE HAVE NO REASON TO DOUBT ITS ACCURACY, BUT WE DO NOT GUARANTEE IT. ALL INFORMATION SHOULD BE VERIFIED PRIOR TO PURCHASE OR LEASE. FLYERS\SEATTLE\FREMONT VILLAGE SQUARE

Fremont Village Square

3601 Fremont Avenue N, Seattle, WA

Nearby Parks



1700 Seventh Avenue Suite 2050
Seattle, Washington 98101
+1 206 332 1466
nai-psp.com

THE INFORMATION CONTAINED HEREIN HAS BEEN GIVEN TO US BY THE OWNER OF THE PROPERTY OR OTHER SOURCES WE DEEM RELIABLE, WE HAVE NO REASON TO DOUBT ITS ACCURACY, BUT WE DO NOT GUARANTEE IT. ALL INFORMATION SHOULD BE VERIFIED PRIOR TO PURCHASE OR LEASE. FLYERS\SEATTLE\FREMONT VILLAGE SQUARE

Fremont Village Square

3601 Fremont Avenue N, Seattle, WA

Demographics



Radius	1 Mile	3 Mile	5 Mile
Population			
2024 Projection	39,726	346,263	548,925
2019 Estimate	36,847	318,435	507,578
2010 Census	30,876	248,207	414,052
Growth 2019 - 2024	7.81%	8.74%	8.15%
Growth 2010 - 2019	19.34%	28.29%	22.59%
Households			
2024 Projection	18,187	172,709	264,284
2019 Estimate	17,020	159,132	244,779
2010 Census	15,232	126,868	203,239
Growth 2019 - 2024	6.86%	8.53%	7.97%
Growth 2010 - 2019	11.74%	25.43%	20.44%
Owner Occupied	7,147 41.99%	56,743 35.66%	97,552 39.85%
Renter Occupied	9,873 58.01%	102,389 64.34%	147,227 60.15%



1700 Seventh Avenue Suite 2050
 Seattle, Washington 98101
 +1 206 332 1466
nai-psp.com