

8000-8018 SHELDON CENTER RD.

UNIT #8014

CANTON, MICHIGAN

RETAIL FOR LEASE

2,300 Square Feet Available



**SIGNATURE ASSOCIATES**  
KNOW SIGNATURE | KNOW RESULTS

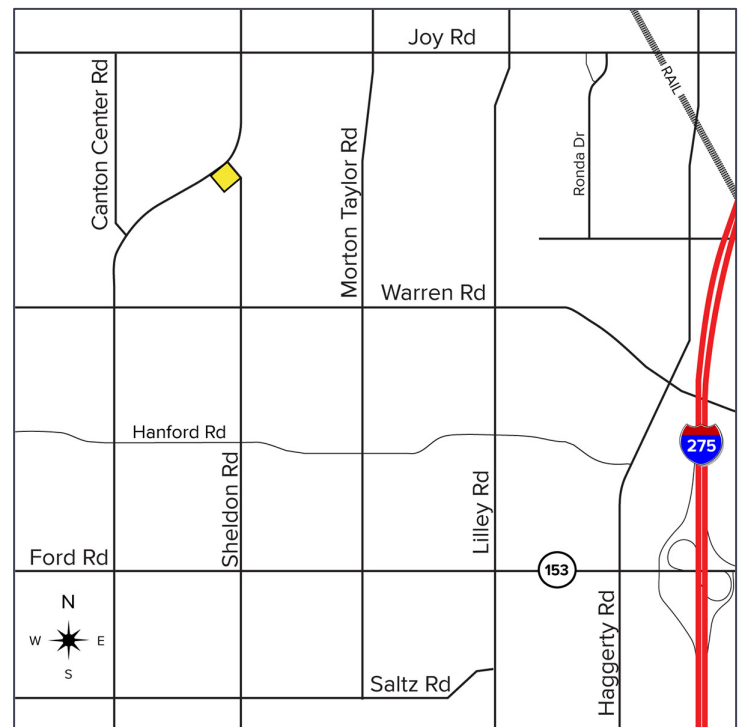
**SHELDON CENTER**



## PROPERTY FEATURES

- 2,300 square feet available
- Zoned C-1
- 15' ceiling height
- Building signage available
- 95 parking spaces
- Lease Rate: \$12.00-\$16.00/sq. ft. NNN

**Comments:** Opportunity to locate in Canton, Michigan. A very desirable area with many national retailers, solid higher-end demographics, and features IKEA.



For more information, please contact:

**JUSTIN GAFFREY**

(248) 799 3143

[jgaffrey@signatureassociates.com](mailto:jgaffrey@signatureassociates.com)

**SIGNATURE ASSOCIATES**

One Towne Square, Suite 1200

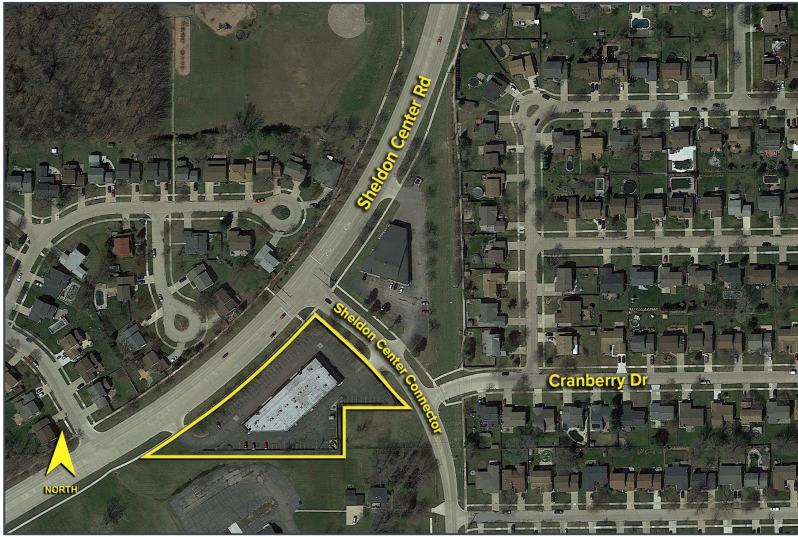
Southfield, MI 48076

[www.signatureassociates.com](http://www.signatureassociates.com)

# 8000-8018 Sheldon Center Rd. – Canton, Michigan

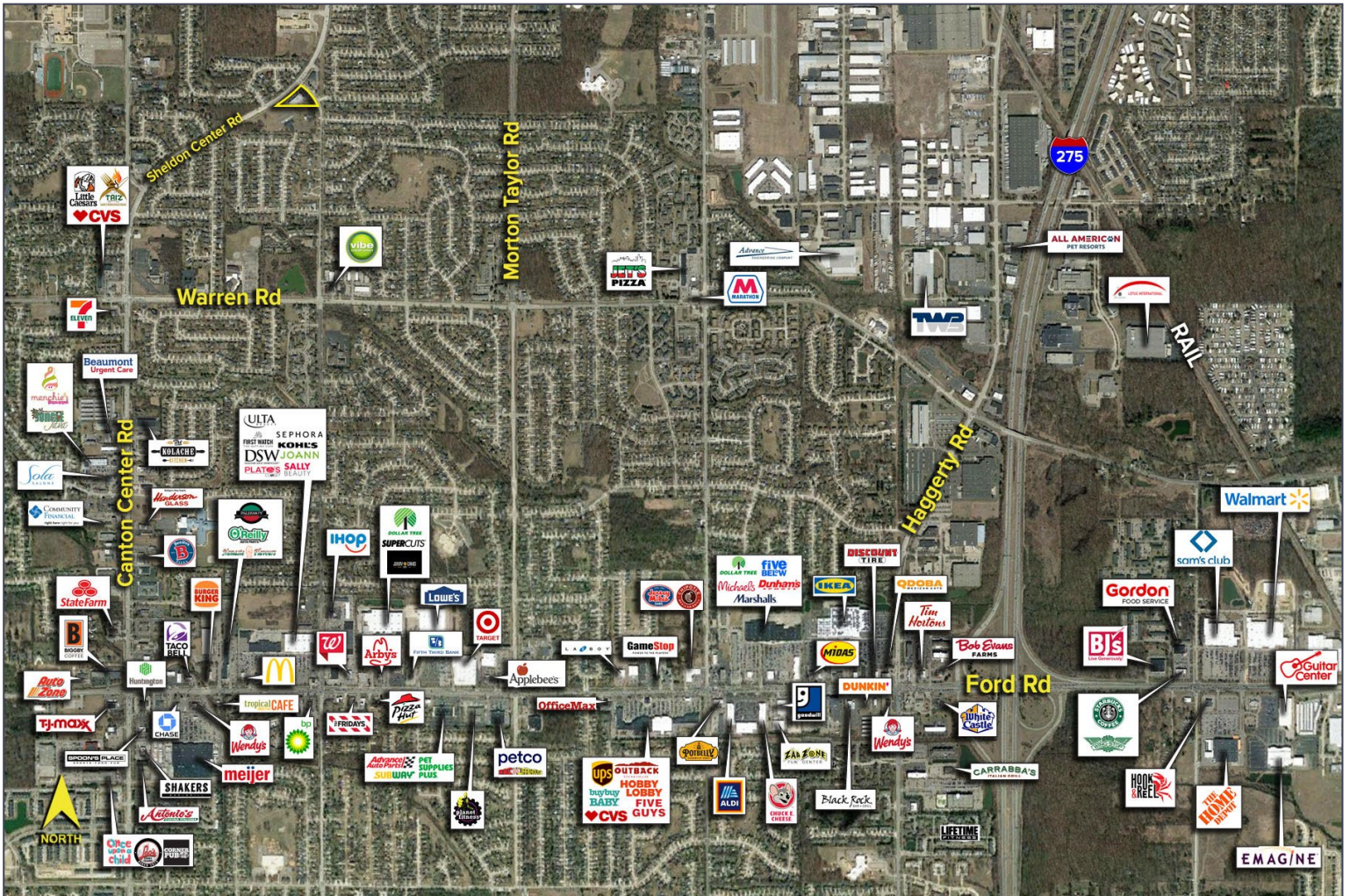
## Retail For Lease

2,300  
Square Feet  
AVAILABLE



DEMOGRAPHICS		
	POPULATION	MED. HH INCOME
1 MILE	13,556	\$93,672
3 MILE	84,485	\$94,570
5 MILE	191,238	\$93,195

TRAFFIC COUNTS (TWO-WAY)	
12,290	Sheldon Center Rd. S. of Sheldon Rd.
9,793	Sheldon Center Rd. N. of Sheldon Rd.
689	Sheldon Rd. S. of Sheldon Center Rd.



For more information, please contact:  
**JUSTIN GAFFREY**  
 (248) 799 3143  
 jgaffrey@signatureassociates.com

**SIGNATURE ASSOCIATES**  
 One Towne Square, Suite 1200  
 Southfield, MI 48076  
 www.signatureassociates.com