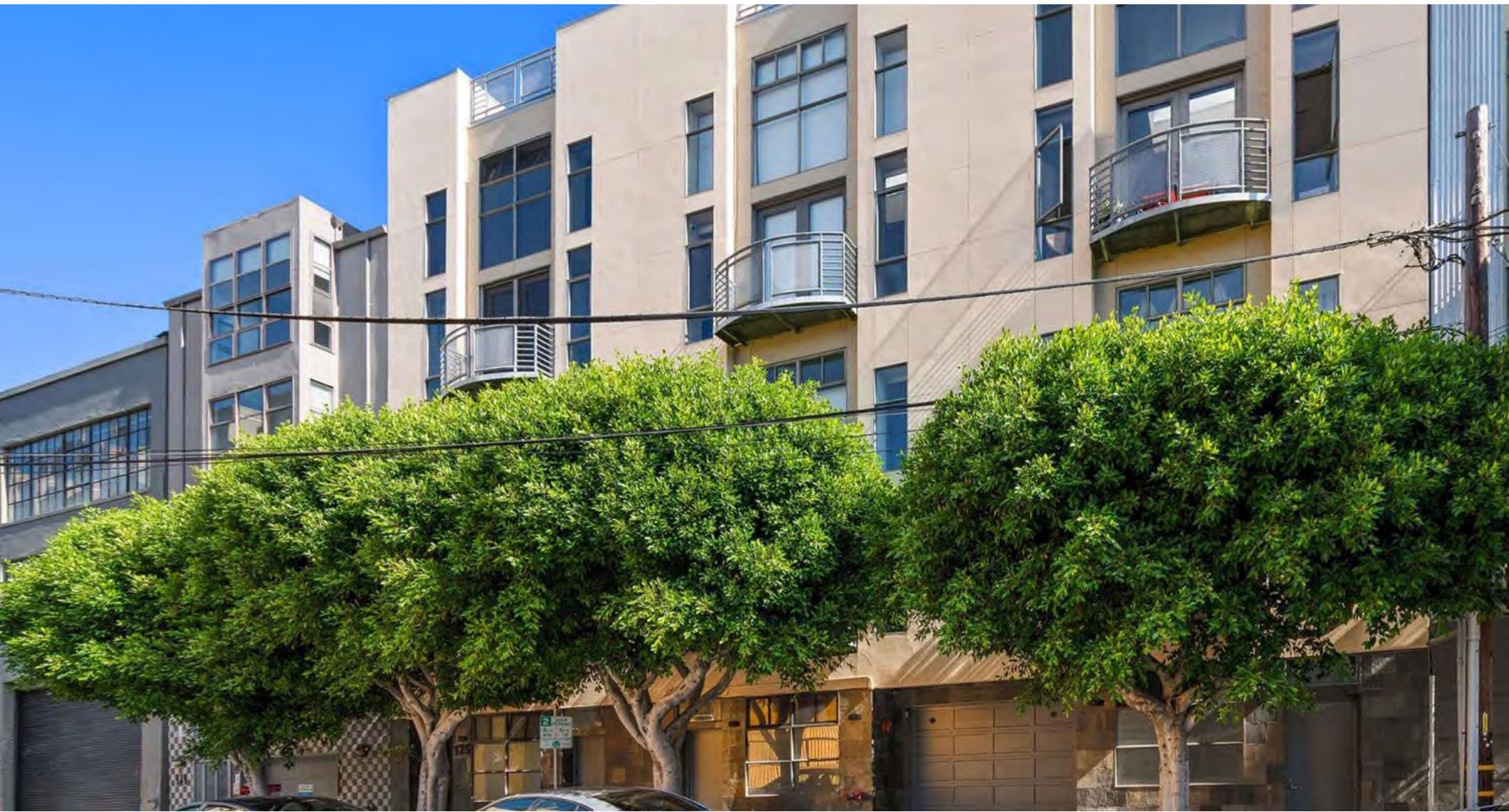




For Lease // 125 Gilbert Street, San Francisco, CA
RENOVATED COMMERCIAL LOFT



ZACH HAUPERT zhaupert@tcpre.com
D 415.539.1121 | C 415.812.1219

MICHAEL SANBERG msanberg@tcpre.com
D 415.539.1103 | C 415.697.6088

TREVOR GUDIM trevor@tcpre.com
D 415.539.1122 | C 858.922.2632

125 GILBERT STREET

PROPERTY SUMMARY

ADDRESS

125 Gilbert Street, San Francisco, CA 94103

AVAILABLE SPACE

+/- 1,448 Square Feet

RENTAL RATE

\$4,500 / Month, Industrial Gross

AVAILABLE

Immediately

BUILDING ATTRIBUTES

- + Recently Renovated Commercial Loft in the Heart of SOMA
- + Two (2) Meeting Rooms
- + Three (3) Restrooms, Two (2) Showers
- + Private Sidewalk Access
- + One (1) Parking Spot Available
- + Shared Roof Deck
- + Brand New Appliances and Fixtures



125 GILBERT STREET

LOCATION OVERVIEW

Desirable South of Market location, walkable to nearby amenities and to surrounding neighborhoods.



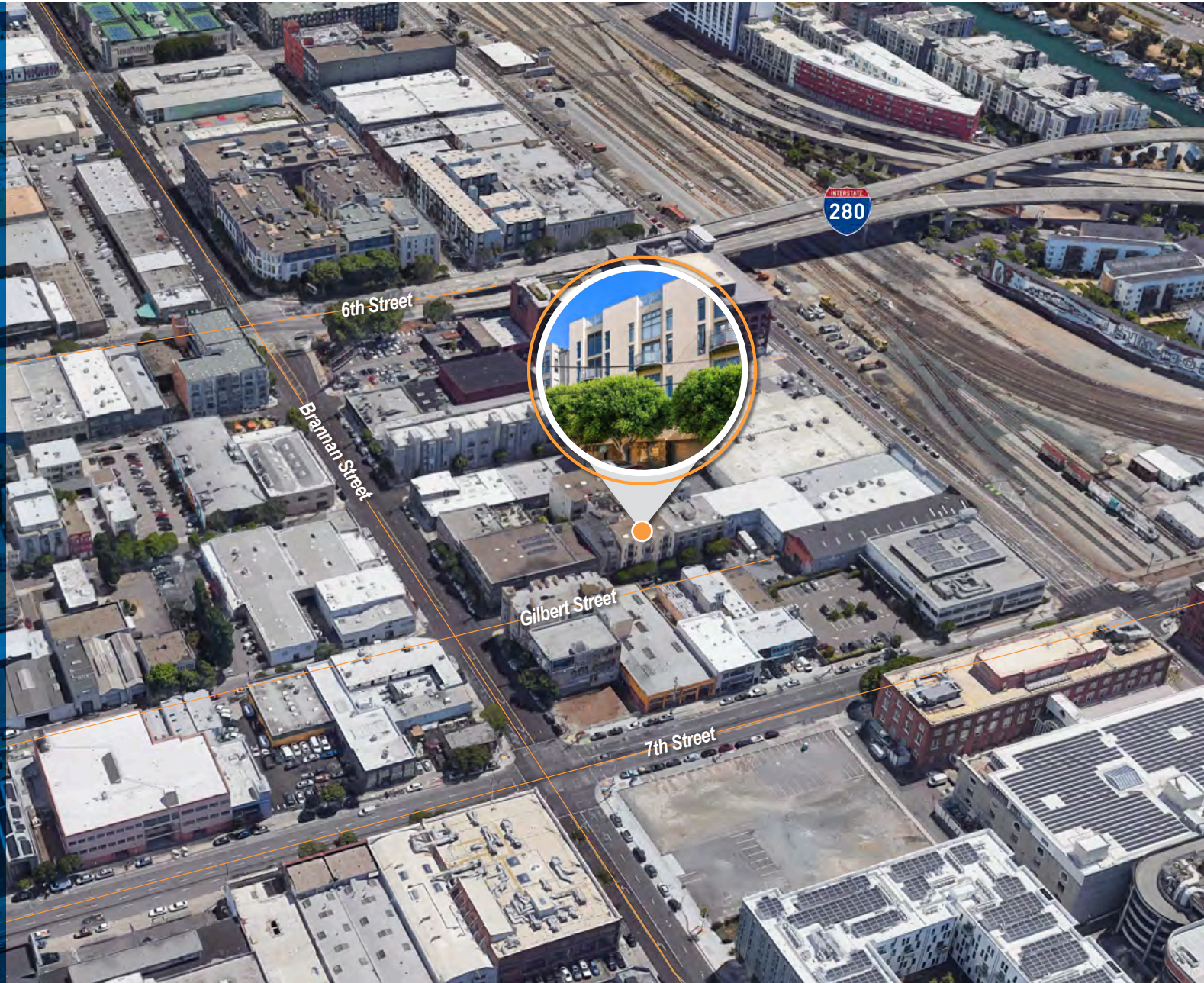
08 MIN to Design District
14 MIN to 4th St CalTrain
18 MIN to Civic Center Bart



07 MIN to Mission District
09 MIN to Union Square
12 MIN to Financial District



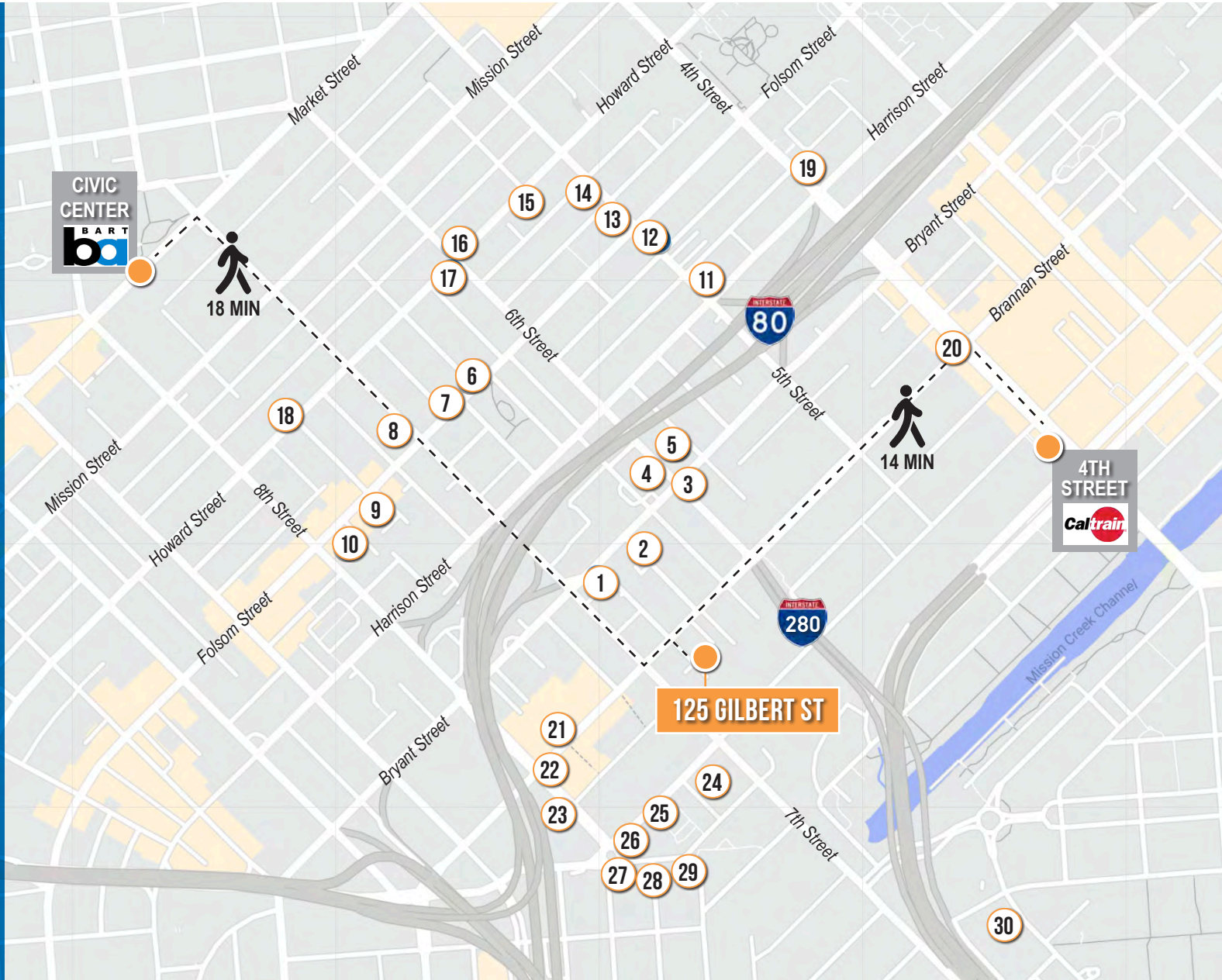
02 MIN to 280 On-Ramp
05 MIN to 80 On-Ramp



125 GILBERT STREET

NEARBY AMENITIES

- 1.....Caffe Roma Coffee Co.
- 2..... Golden Burma Restaurant
- 3..... Turtle Tower
- 4..... Japanese House
- 5..... Frijtz
- 6..... Deli Board
- 7..... Extreme Pizza
- 8..... Sightglass Coffee
- 9..... Iza Ramen SOMA
- 10..... SF Pole and Dance
- 11..... All Star Donuts
- 12..... Mathilde French Bistro
- 13..... Vitality Bowls
- 14..... Contraband Coffee
- 15..... Tin
- 16..... Subway
- 17..... Bini's Kitchen
- 18..... Cellarmaker Brewing Co.
- 19..... Whole Foods Market
- 20..... Marlowe
- 21..... Bellota
- 22..... Peet's Coffee
- 23..... Hardwood Bar & Smokery
- 24..... Equator Coffee
- 25..... Omakase
- 26..... Starbucks
- 27..... The Grove - Design District
- 28..... Niku Steakhouse
- 29..... Dumpling Time
- 30..... UCSF Mission Bay Hospitals



125 GILBERT STREET



MARLOWE SF



CONTRABAND CAFE



SIGHTGLASS COFFEE



CELLARMAKER BREWING CO.



CHANTAL GUILLON PATISSERIE

125 GILBERT
STREET



TCP
TOUCHSTONE
COMMERCIAL PARTNERS

Corp. Lic. 01112906
www.tcp.com

ZACH HAUPERT

D 415.539.1121 C 415.812.1219
zhaupert@tcp.com DRE # 01822907

MICHAEL SANBERG

D 415.539.1103 C 415.697.6088
msanberg@tcp.com DRE # 01930041

TREVOR GUDIM

D 415.539.1122 C 858.922.2632
trevor@tcp.com DRE # 01979980

The information presented has been secured from sources we believe to be reliable but we make no representations or warranties, expressed or implied, as to the accuracy of the information. Lessee must verify the information and bears all risk for any inaccuracies.