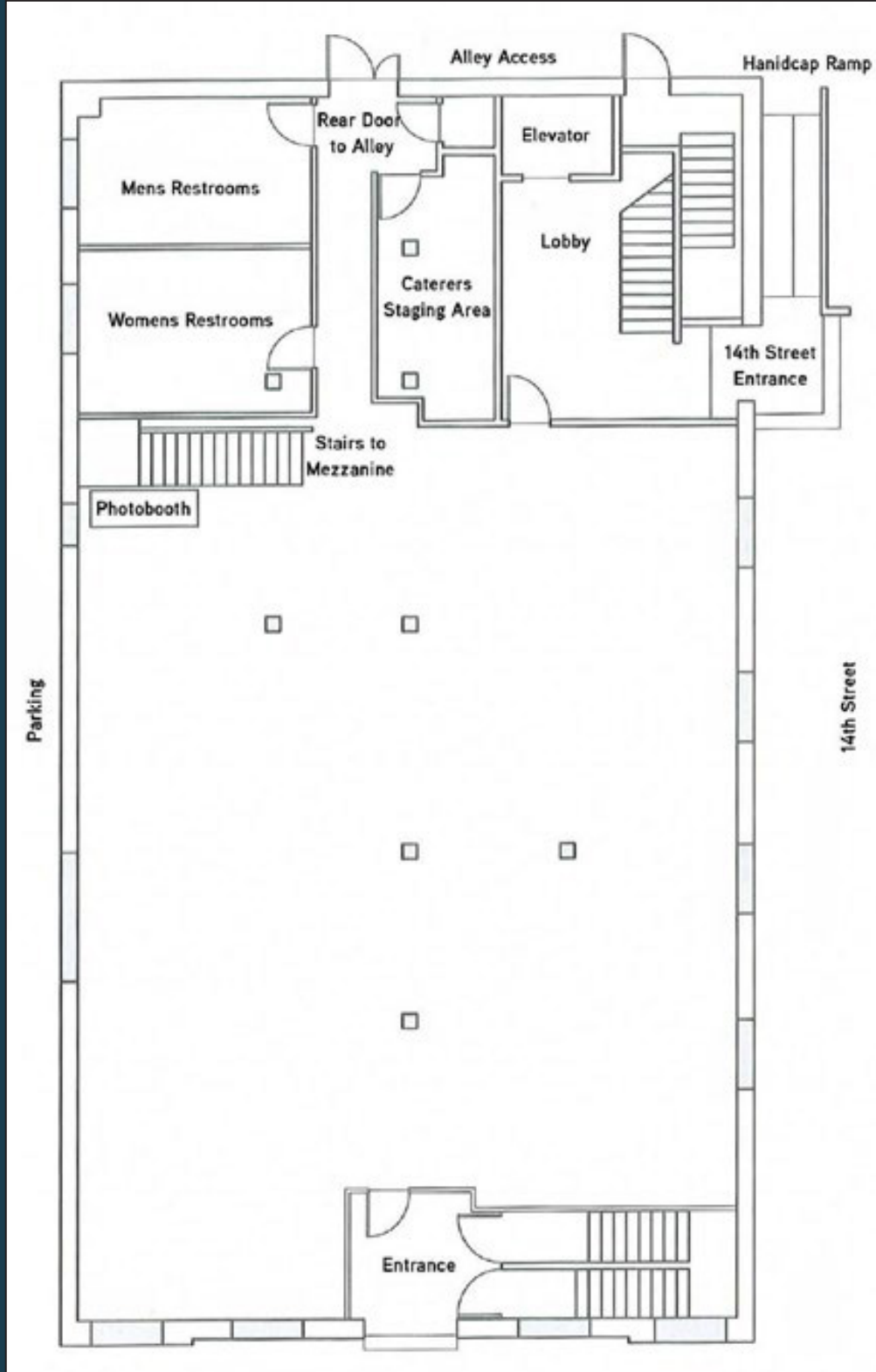


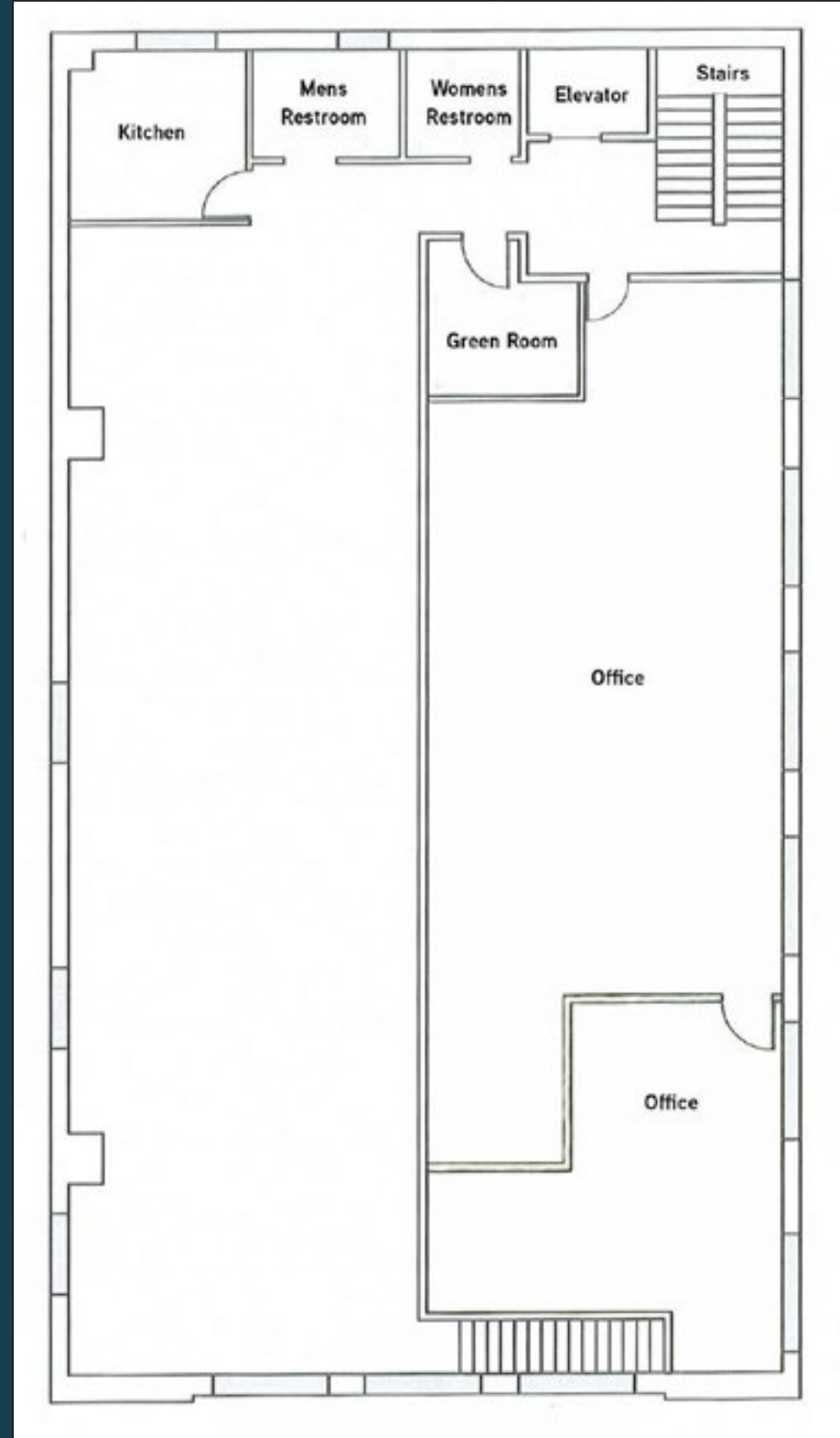
HISTORIC DOWNTOWN RETAIL/OFFICE - 2,250 - 11,683 SF

1402 W. Grove Street, Boise, Idaho 83702

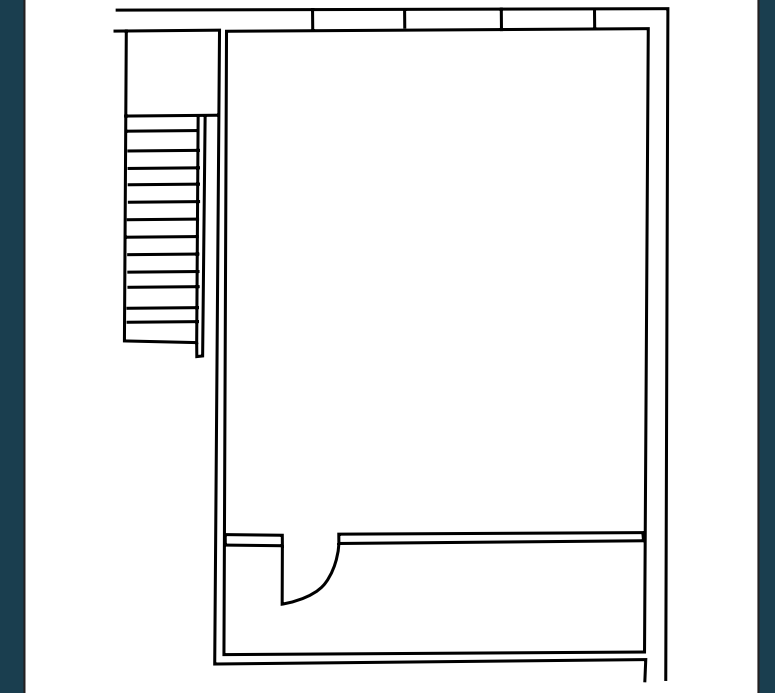
FIRST FLOOR - 4,500 SF



SECOND FLOOR - 2,250-4,500 SF



MEZZANINE - STORAGE



CONFIGURATION

SECOND FLOOR

MEZZANINE

FIRST FLOOR

