



## EXCEPTIONAL RETAIL/OFFICE OPPORTUNITY | FOR LEASE

1403 Dunn Ave  
Jacksonville, FL 32218

JACK SLADICK  
D - 904.302.6944  
C - 239.248.1652  
jack@cantrellmorgan.com

KAYLA DEGUZMAN  
D - 904.302.6930  
M - 904.208.1168  
kayla@cantrellmorgan.com



# PROPERTY OVERVIEW

Located on the bustling Dunn Avenue corridor and just 1 mile from I-95, this prime shopping center offers unbeatable visibility and easy access for local and regional traffic. The property features ample parking, a resurfaced lot, and tall signage that ensures your business stands out.

Recent upgrades include a **modernized façade** and a **brand-new pylon sign**, giving the center a fresh, updated look. Surrounded by a mix of **national and regional tenants**, this location provides the perfect environment for retail, office, or service-based businesses seeking a high-traffic, high-exposure destination. Don't miss the opportunity to position your business in this vibrant, well-established center!

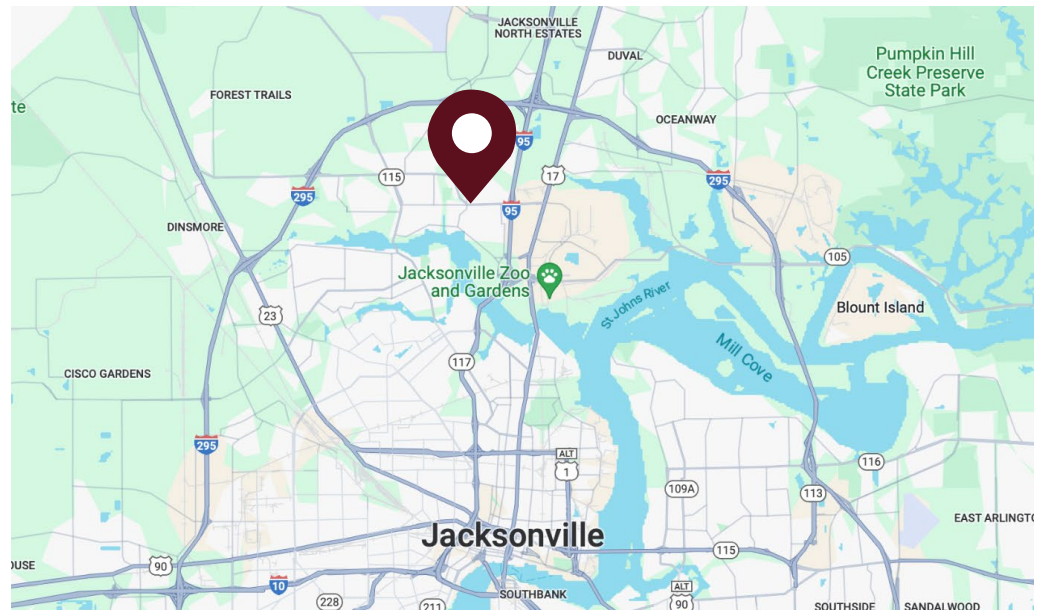


## LEASING SUMMARY

Address:	1403 Dunn Ave, Jacksonville, FL 32218
Zoning:	CCG-1
Parking:	245 Surface Spaces
Pylon Signage:	Yes
Frontage:	Dunn Ave 539'
Year built:	1988
Property Type:	Neighborhood Center

## LEASE DETAILS

Suite	Size	Lease Price
Unit 4-5	2,400 SF	Call for pricing + \$6.56/SF NNN
Unit 12-13	1,200-2,400 SF	Call for pricing + \$6.56/SF NNN
Unit 15	1,200 SF	Call for pricing + \$6.56/SF NNN
Unit 21-24	5,720 SF	Call for pricing + \$6.56/SF NNN



1403 Dunn Ave | Jacksonville, FL 32218

**JACK SLADICK**  
D - 904.302.6944  
C - 239.248.1652  
jack@cantrellmorgan.com

**KAYLA DEGUZMAN**  
D - 904.302.6930  
M - 904.208.1168  
kayla@cantrellmorgan.com



# THE SHOPPING PLACE



1403 Dunn Ave | Jacksonville, FL 32218

**JACK SLADICK**  
D - 904.302.6944  
C - 239.248.1652  
jack@cantrellmorgan.com

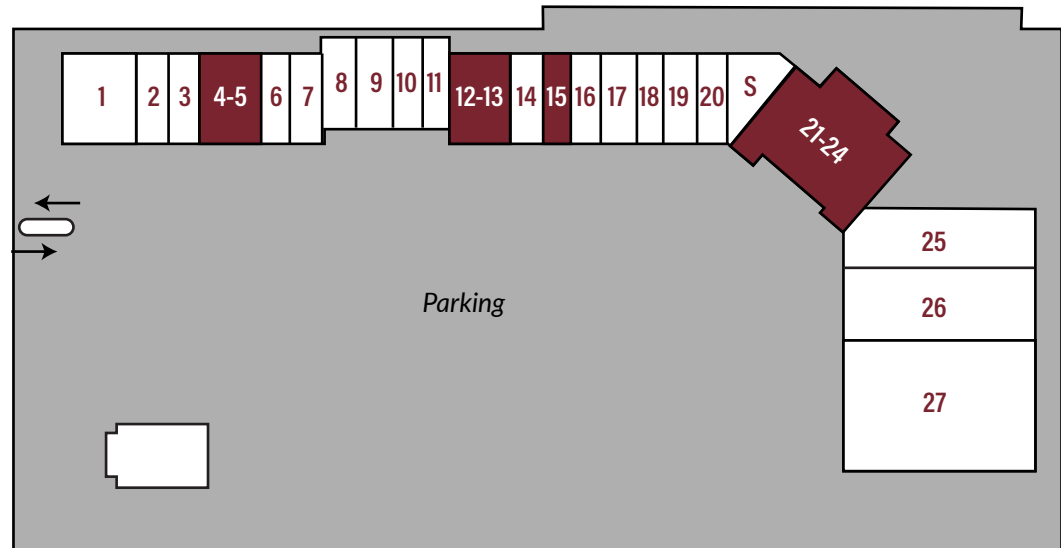
**KAYLA DEGUZMAN**  
D - 904.302.6930  
M - 904.208.1168  
kayla@cantrellmorgan.com



# SITE PLAN



Unit	SF	Tenant
1	3,000	Amscot
2	1,200	Ajak, Inc. (VIP II Barber Shop)
3	1,200	Duval Smoke and Vape, Inc.
<b>4-5</b>	<b>2,400</b>	<b>AVAILABLE</b>
6	2,400	Jax Laundry King Dunn Ave, Inc.
8	1,200	10000 Cellphones (Budax Wireless)
9	1,200	Health Plan
10	2,400	Great Expressions Dental
<b>12-13</b>	<b>2,400</b>	<b>AVAILABLE</b>
14	1,200	Bob & Sons Jewelry
<b>15</b>	<b>1,200</b>	<b>AVAILABLE</b>
16	1,200	Sight & Style
17	1,200	Naija Hair Braiding, LLC
18-20	3,600	Premier Event Center
<b>21-24</b>	<b>5,720</b>	<b>AVAILABLE</b>
26A	6,613	Beauty Exchange
26B	3,500	Doc Tony
27	10,000	Value Pawn & Jewelry



1403 Dunn Ave | Jacksonville, FL 32218

**JACK SLADICK**  
 D - 904.302.6944  
 C - 239.248.1652  
 jack@cantrellmorgan.com

**KAYLA DEGUZMAN**  
 D - 904.302.6930  
 M - 904.208.1168  
 kayla@cantrellmorgan.com



## UNIT 4-5 | INTERIOR PHOTOS



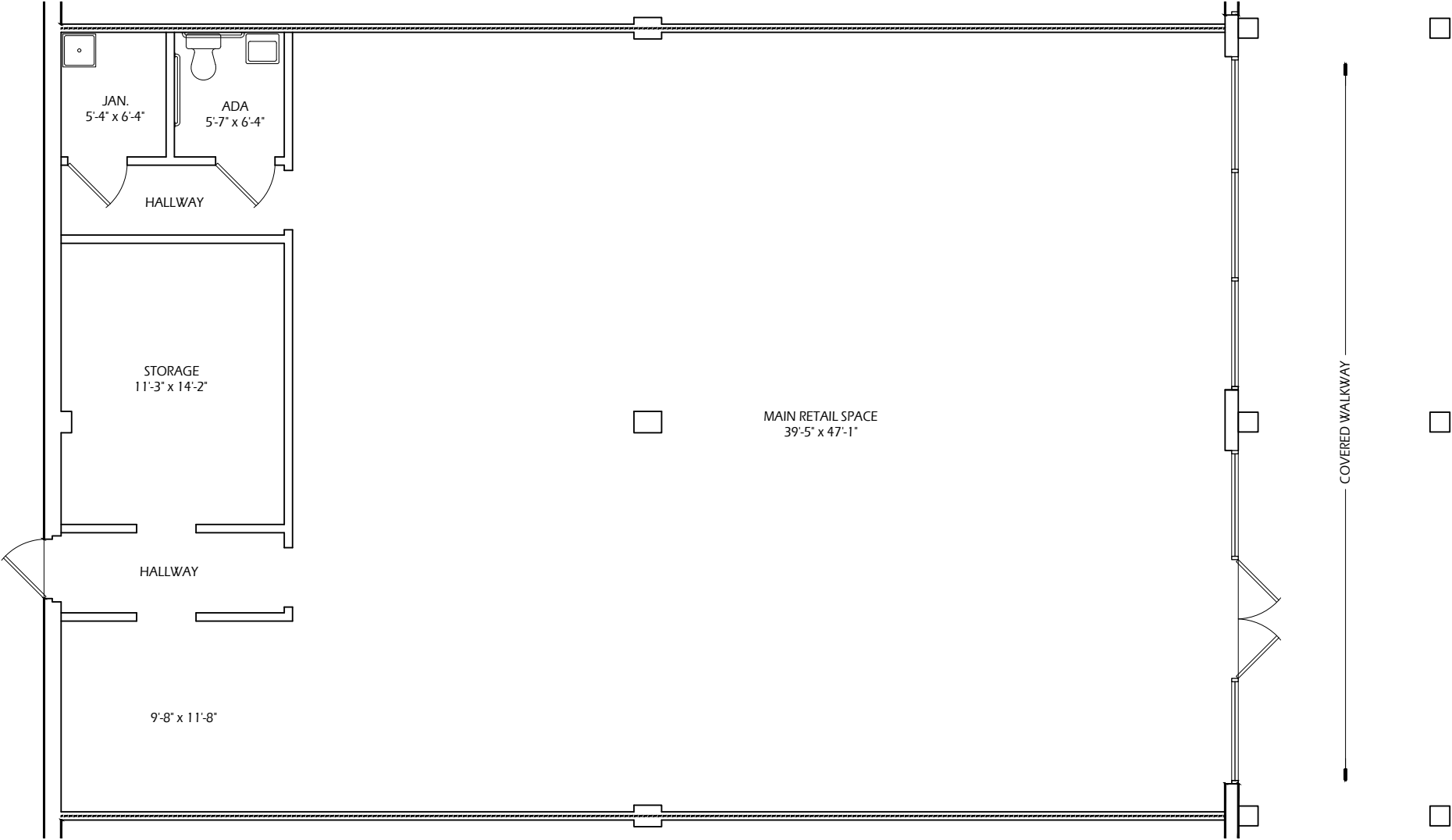
1403 Dunn Ave | Jacksonville, FL 32218

**JACK SLADICK**  
D - 904.302.6944  
C - 239.248.1652  
[jack@cantrellmorgan.com](mailto:jack@cantrellmorgan.com)

**KAYLA DEGUZMAN**  
D - 904.302.6930  
M - 904.208.1168  
[kayla@cantrellmorgan.com](mailto:kayla@cantrellmorgan.com)



# UNIT 4-5 | FLOOR PLAN



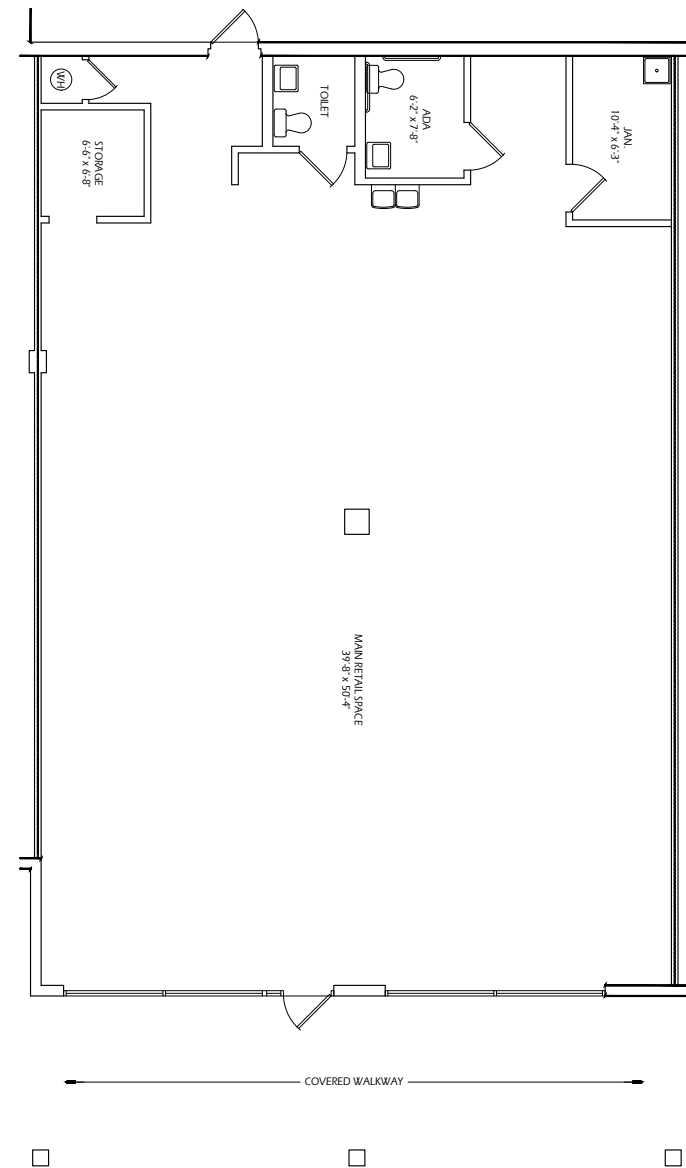
1403 Dunn Ave | Jacksonville, FL 32218

**JACK SLADICK**  
D - 904.302.6944  
C - 239.248.1652  
jack@cantrellmorgan.com

**KAYLA DEGUZMAN**  
D - 904.302.6930  
M - 904.208.1168  
kayla@cantrellmorgan.com



# UNIT 12-13 | INTERIOR PHOTO & FLOOR PLAN



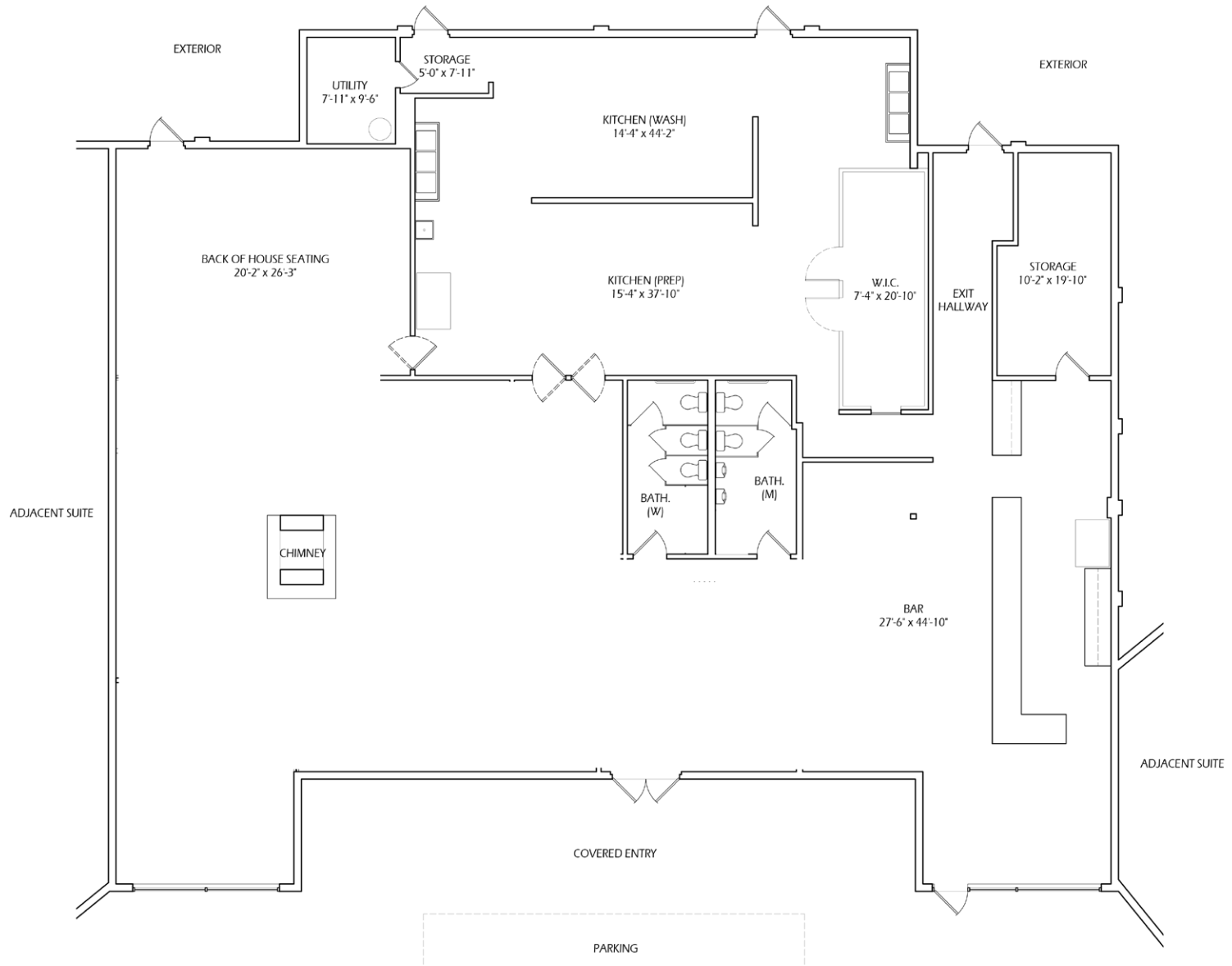
1403 Dunn Ave | Jacksonville, FL 32218

**JACK SLADICK**  
D - 904.302.6944  
C - 239.248.1652  
jack@cantrellmorgan.com

**KAYLA DEGUZMAN**  
D - 904.302.6930  
M - 904.208.1168  
kayla@cantrellmorgan.com



# UNIT 21-24 | FLOOR PLAN



1403 Dunn Ave | Jacksonville, FL 32218

**JACK SLADICK**  
D - 904.302.6944  
C - 239.248.1652  
jack@cantrellmorgan.com

**KAYLA DEGUZMAN**  
D - 904.302.6930  
M - 904.208.1168  
kayla@cantrellmorgan.com



# SURROUNDING AREA



1403 Dunn Ave | Jacksonville, FL 32218

**JACK SLADICK**  
 D - 904.302.6944  
 C - 239.248.1652  
 jack@cantrellmorgan.com

**KAYLA DEGUZMAN**  
 D - 904.302.6930  
 M - 904.208.1168  
 kayla@cantrellmorgan.com

