

For Lease

30,800 SF
Warehouse Space Available



1020 Raco Court Lawrenceville, Georgia 30046



BUILDING HIGHLIGHTS

- 30,800 SF Total Building (Subdividable)
- BTS Office
- 24' Clear Height
- 11 Dock Highs
- 2 Oversized Drive-Ins
- ESFR Sprinklered
- 17 Parking Spaces (Additional Available)
- Two 1,000 Amp Service, 3-Phase Power
- 140' Building Depth
- 50' x 44' Column Spacing
- 120' Deep Truck Court

LOCATION HIGHLIGHTS

- Prime location in the I-85 / Northeast Submarket offering convenient access to entire Metro region
- Easy ingress / egress to Hwy. 316, I-985 and I-85

Nathan Anderson

404 812 4020
nanderson@naibg.com

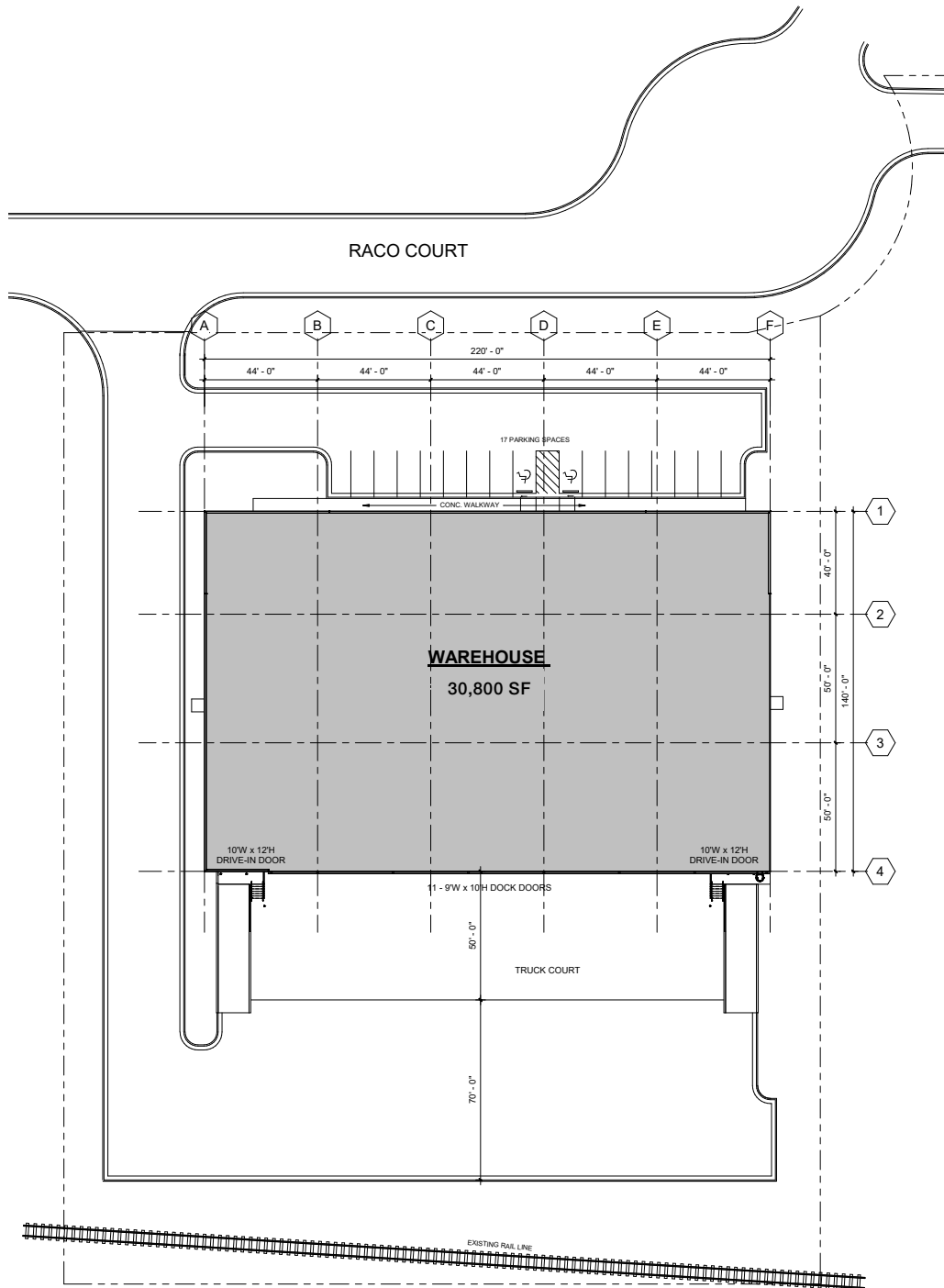
Walker Adams

404 812 4066
wadams@naibg.com

Information is deemed from reliable sources. No warranty is made as to its accuracy.

naibg.com

1020 RACO CT
Site Plan



Nathan Anderson

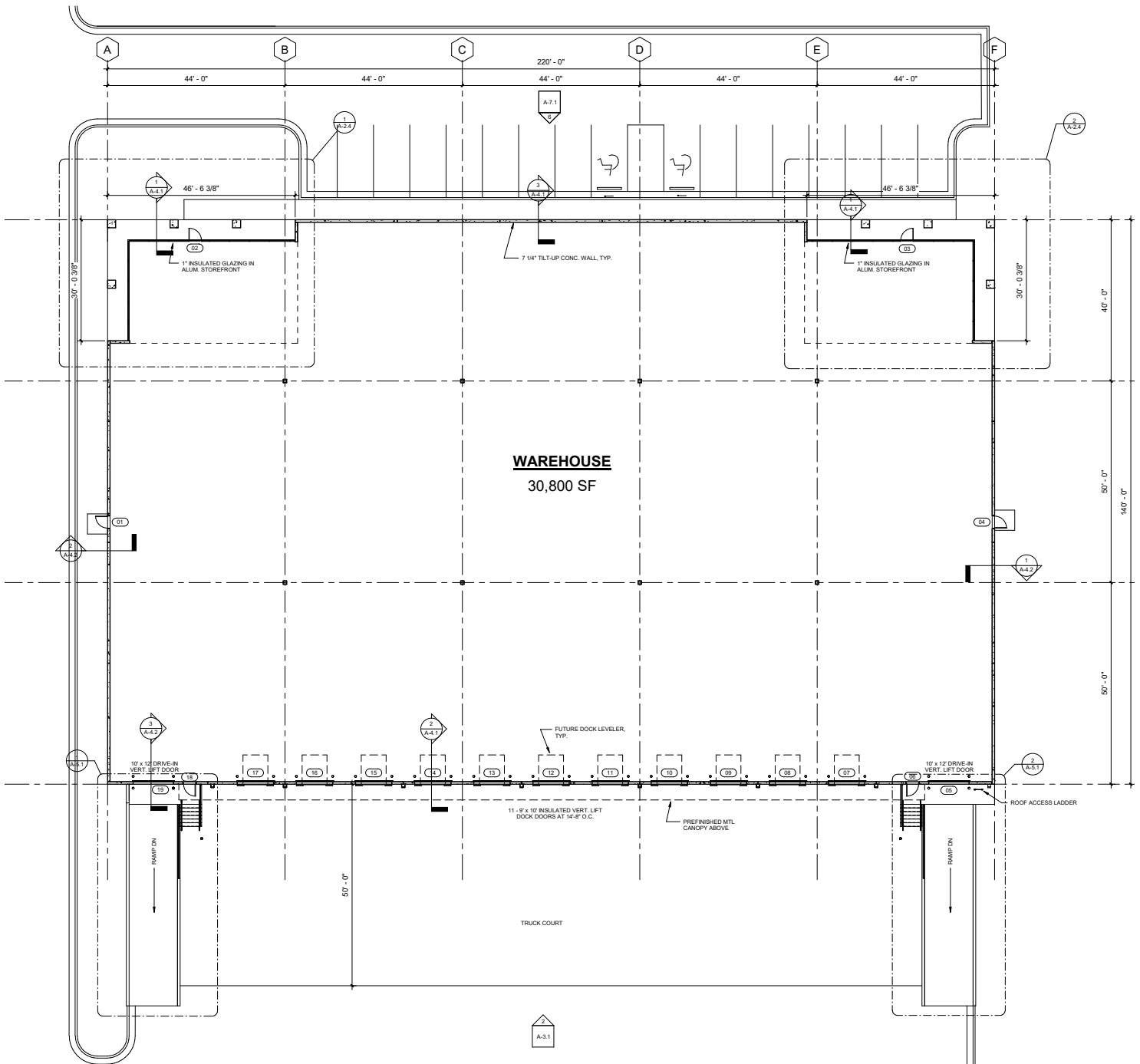
404 812 4020
nanderson@naibg.com

Walker Adams

404 812 4066
wadams@naibg.com

Information is deemed from reliable sources. No warranty is made as to its accuracy.

1020 RACO CT
Site Plan

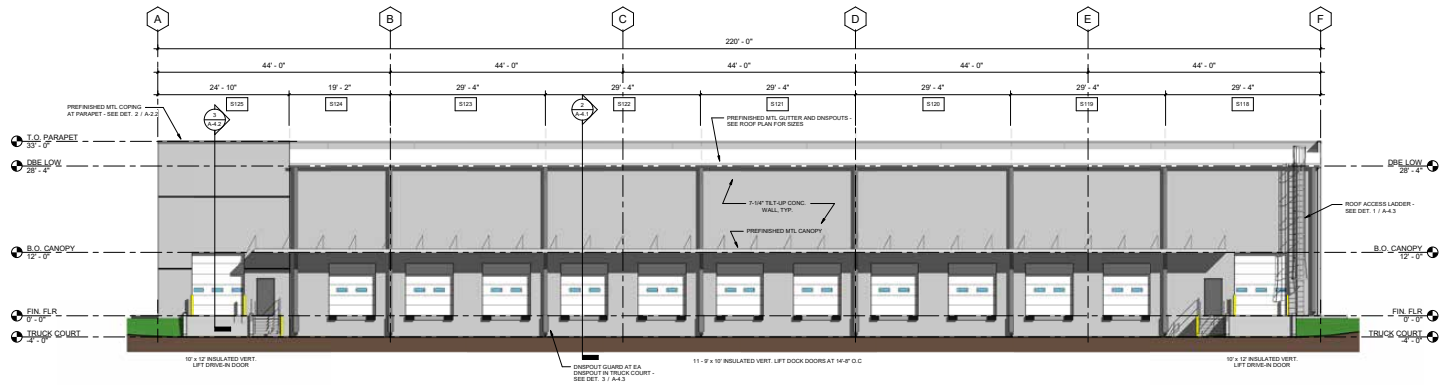


Nathan Anderson
404 812 4020
nanderson@naibg.com

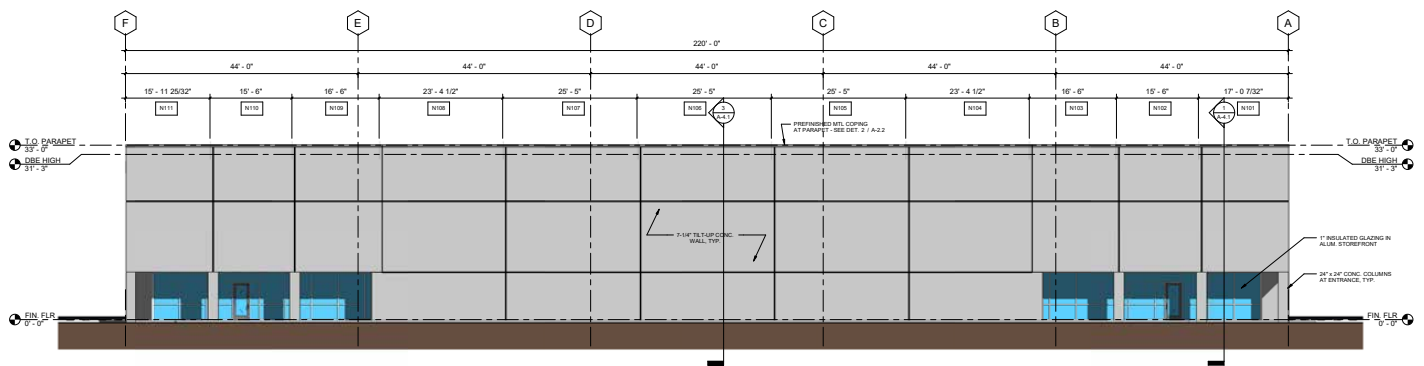
Walker Adams
404 812 4066
wadams@naibg.com

Information is deemed from reliable sources. No warranty is made as to its accuracy.

1020 RACO CT Elevations



2 SOUTH BUILDING ELEVATION
1/8" = 1'-0"



1 NORTH BUILDING ELEVATION
1/8" = 1'-0"

Nathan Anderson
404 812 4020
nanderson@naibg.com

Walker Adams
404 812 4066
wadams@naibg.com

Information is deemed from reliable sources. No warranty is made as to its accuracy.