

GROUND LEASE

99 North Main Street • Angels Camp, CA



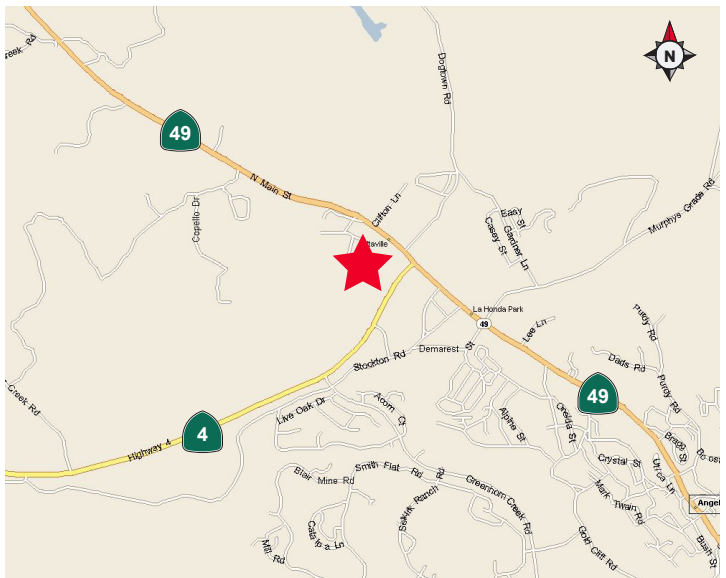
Property Profile

Location: 99 North Main Street
(SWQ Highway 49 & Highway 4)
Angels Camp

Spaces Available: ±.49 Acres (21,344 SF)

Zoned: SC Suburban Commercial
(Very broad list of uses)

APN: 058-013-012



Property Highlights

- Ideally located to serve the needs to local residents and thousands of tourists
- Located on Highway 4 which is the primary road leading to the Bear Valley Ski Resort

For more information, contact:

James A. Teare, CRX
Senior Director
+1 916 329 1548
James.Teare@cushwake.com
LIC #01111851

Blair J. Wheatley
Director
+1 916 329 1547
Blair.Wheatley@cushwake.com
LIC #01499974

400 Capitol Mall, Suite 1800
Sacramento, CA 95814

T: +1 916 288 4800
F: +1 916 446 0024

cushmanwakefield.com

GROUND LEASE

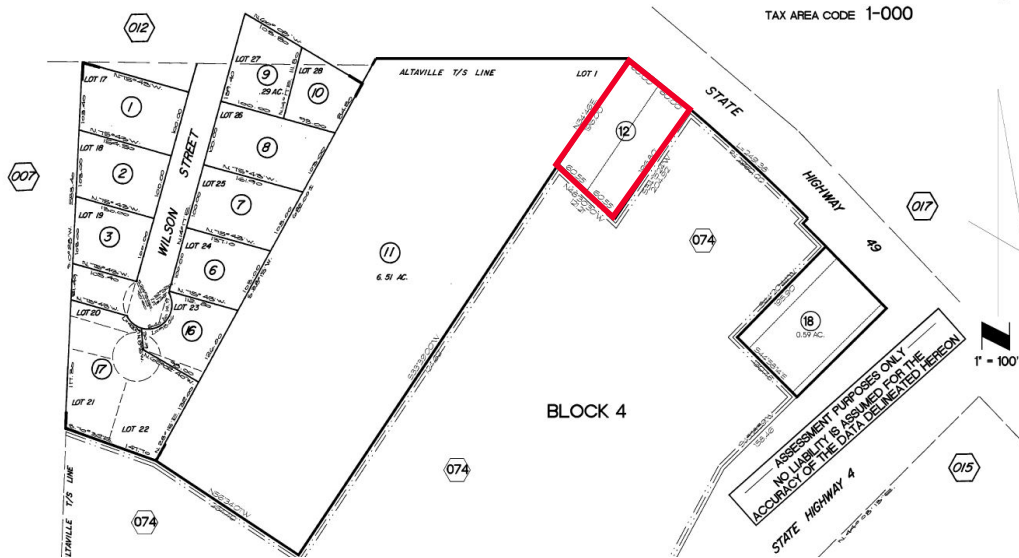
99 North Main Street • Angels Camp, CA



Aerial Map



ALTAVILLE TOWNSITE BLK 4 FOR LOTS 1,2,3



For more information, contact:

James A. Teare, CRX
Senior Director
+1 916 329 1548
James.Teare@cushwake.com
LIC #01111851

Blair J. Wheatley
Director
+1 916 329 1547
Blair.Wheatley@cushwake.com
LIC #01499974

400 Capitol Mall, Suite 1800
Sacramento, CA 95814

T: +1 916 288 4800
F: +1 916 446 0024

cushmanwakefield.com